

Torre en Conill, Betera

REF. VV2212050



House for sale with Terrace in Torre en Conill (Betera)

Features

- ✓ Views
- ✓ Heating
- ✓ Boxroom
- ✓ AACC
- ✓ Terrace
- ✓ Backyard
- ✓ Pool
- ✓ Gym
- ✓ Security
- ✓ Has parking

Price

4,100,000 €

Surface

775 m²

Plot surface

2,493 m²

Bedrooms

5

Bathrooms

7



775 sqm house with Terrace and views in Torre en Conill, Betera.

The property has 5 bedrooms, 7 bathrooms, swimming pool, fireplace, gymnasium, 4 parking spaces, air conditioning, fitted wardrobes, laundry room, balcony, garden, heating and storage room.

Contact us,
we will be happy to assist you,
to offer you more details and information.

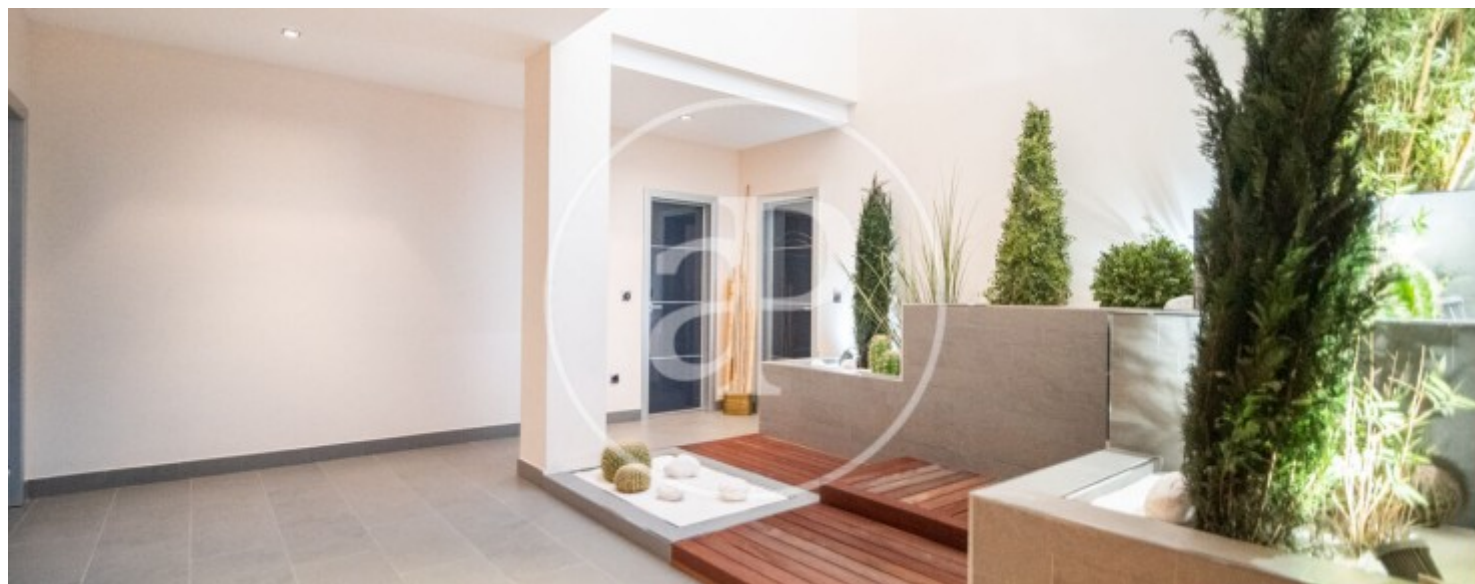
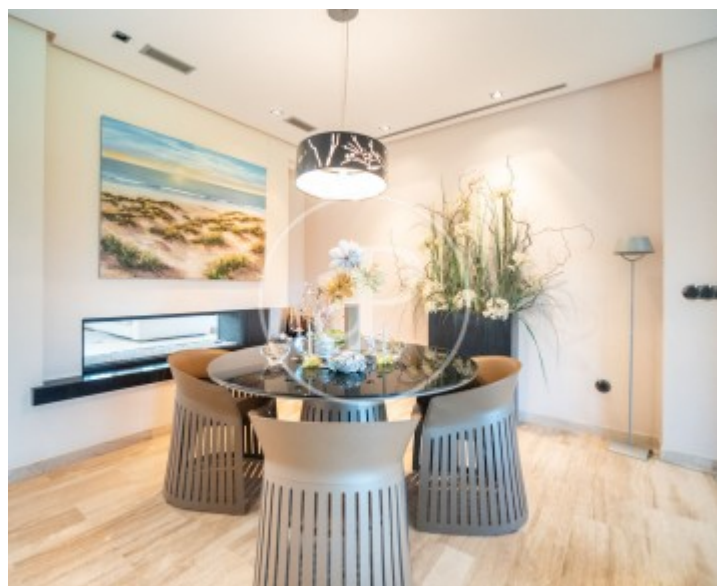
Torre en Conill, Betera

REF. VV2212050



Torre en Conill, Betera

REF. VV2212050



Torre en Conill, Betera

REF. VV2212050





APROPERTIES
REAL ESTATE

Calle Mossen Femades 3, bajo dcha. Ed. Lauria
46002 Valencia
T. 96 128 59 65
www.aproperties.es

Torre en Conill, Betera

REF. VV2212050



The information about any property is not binding to any offer or contract. Any verbal or written declaration made by aProperties with regards to the value or condition of the property should not be considered accurate or factual. The pictures make reference to some parts of the property at the times that they were taken. The areas, dimensions and distances that are given are approximate and should be checked by the client. The images are computer generated and are just an approximate indication of the real appearance of the property; these may change at any time. The information with regards to the property may also change at any time.



For **more information** or
to make an appointment

apropertiesvalencia@aproperties.es
Tel: 96 128 59 65
www.aproperties.es