

(Xirivella)

Ref: ONV2301005



New building (work) for sale with Terrace in Xirivella

new building (work) with Terrace in Xirivella., parking space, air conditioning, fitted wardrobes, garden and storage room.

Xirivella

Surface
228 m² - 269 m²

Units
8

Completion
Q2 2025

- ✓ Boxroom
- ✓ AACC
- ✓ Terrace
- ✓ Backyard
- ✓ Has parking

Price from 294,000 €



(Xirivella)

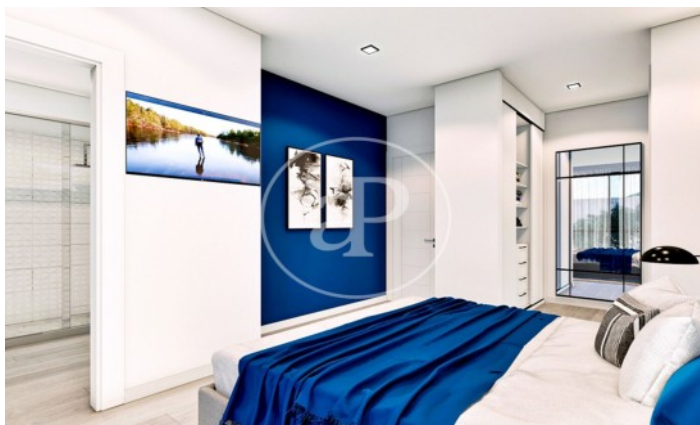
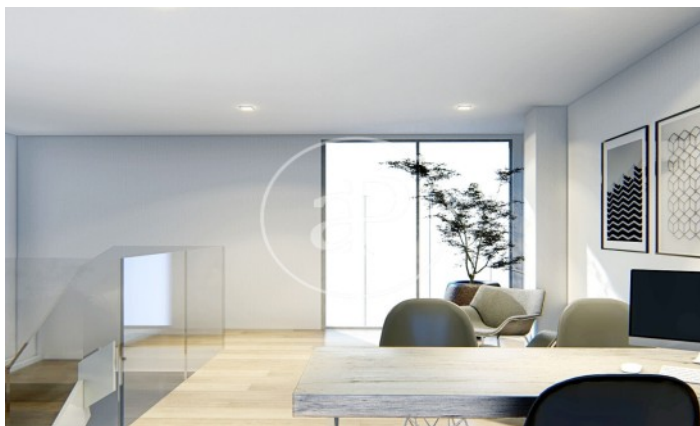
Ref: ONV2301005

Units in this development

Type	Unit	Surface	Terrace	Bedrooms	Bathrooms	Price	State
House	Bajo 1	268 m ²	39 m ²	3	3	€ 361,000	Available
House	Bajo 2	266 m ²	39 m ²	3	3	€ 328,000	Available
House	Bajo 4	269 m ²	39 m ²	3	3	€ 331,000	Available
House	Bajo 5	267 m ²	39 m ²	3	3	€ 352,000	Available
House	Bajo 6	228 m ²	29 m ²	3	3	€ 294,000	Available
House	Bajo 7	228 m ²	29 m ²	3	3	€ 294,000	Available

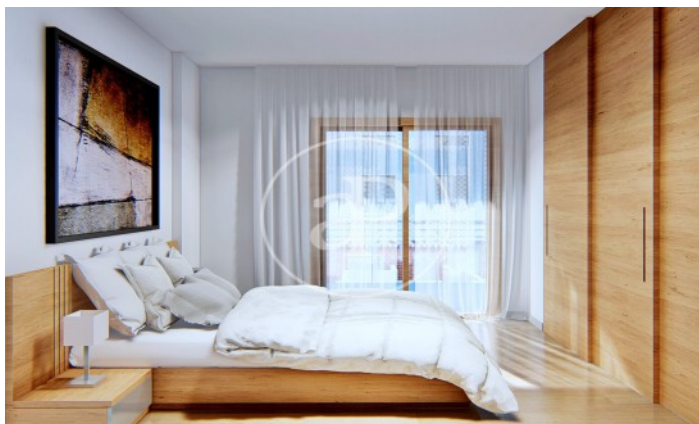
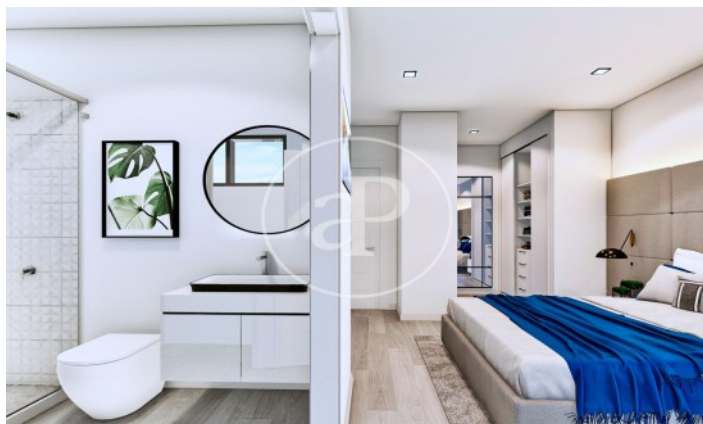
(Xirivella)

Ref: ONV2301005



(Xirivella)

Ref: ONV2301005



The information about any property is not binding to any offer or contract. Any verbal or written declaration made by aProperties with regards to the value or condition of the property should not be considered accurate or factual. The pictures make reference to some parts of the property at the times that they were taken. The areas, dimensions and distances that are given are approximate and should be checked by the client. The images are computer generated and are just an approximate indication of the real appearance of the property; these may change at any time. The information with regards to the property may also change at any time.

Contact us today for more information or to arrange a viewing

Tel: 96 128 59 65

apropertiesvalencia@aproperties.es

<https://www.aproperties.es>