

Xilxes

REF. AV2402120



Flat for sale in Xilxes

Features

Surface

152 m²

Bedrooms

3

Bathrooms

2

- ✓ Views
- ✓ Boxroom
- ✓ Has parking
- ✓ Furnished
- ✓ Terrace

Price

900 €



aProperties presents this charming duplex apartment in Chilches, Castellón, located on the first floor of a two-storey building, offering a unique living experience with a Mediterranean touch.

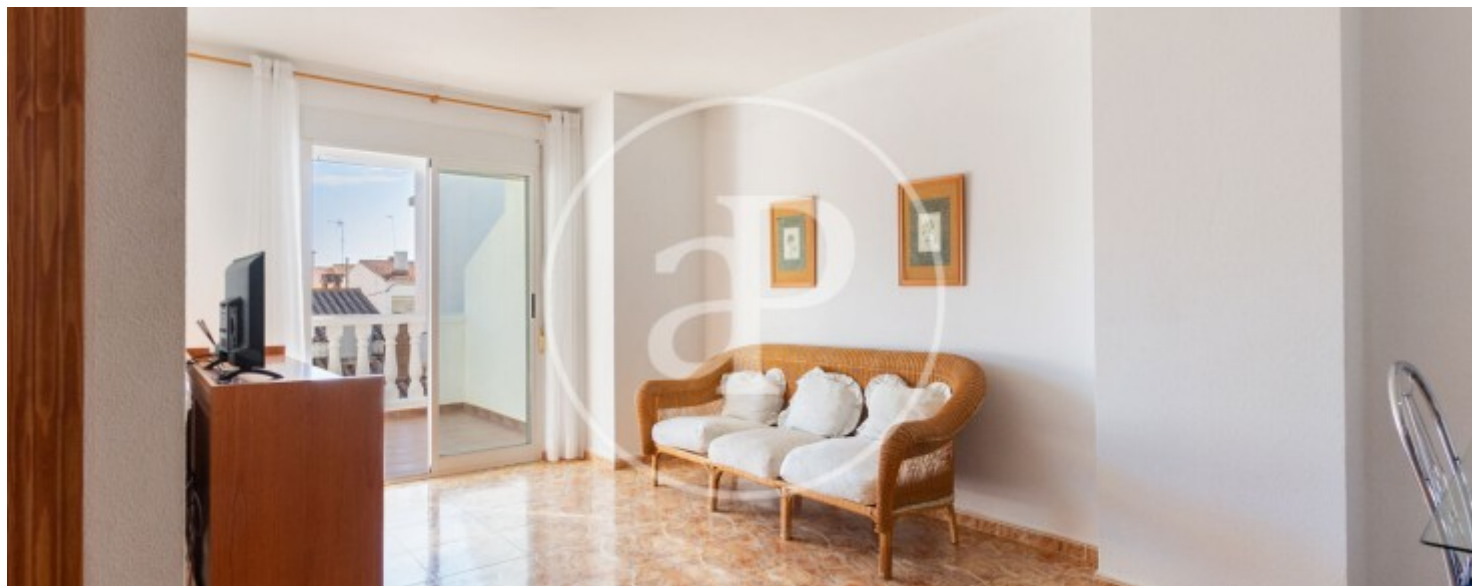
With an east facing orientation, it offers the opportunity to wake up every morning with sunlight illuminating the space and sea views. The main floor consists of a spacious and functional kitchen, very bright. The living-dining room with natural light leads to a large terrace ideal for relaxing and enjoying with the family and with east orientation and sea views, it has a complete bathroom with shower. The first floor has three double bedrooms, all with fitted

wardrobes offering generous storage space, full bathroom with bathtub, a private interior terrace, brightness is a prominent feature throughout the duplex, creating a warm and welcoming atmosphere. The property also includes a large garage space and a storage room, which is very convenient for additional storage. Chilches, with its train station, supermarkets, health centres and sports facilities, offers an excellent quality of life. The nearby beach, with its generous expanse, adds a special touch to the location, making this home an unbeatable choice for those looking for the perfect...

Contact us,
we will be happy to assist you,
to offer you more details and information.

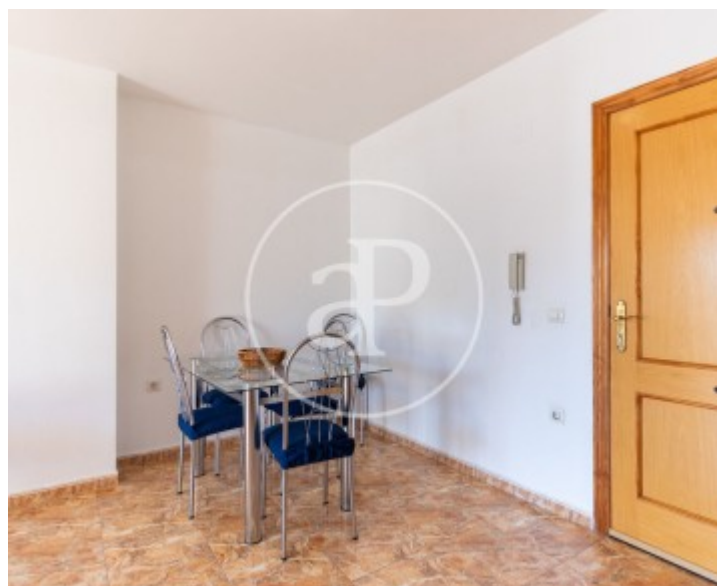
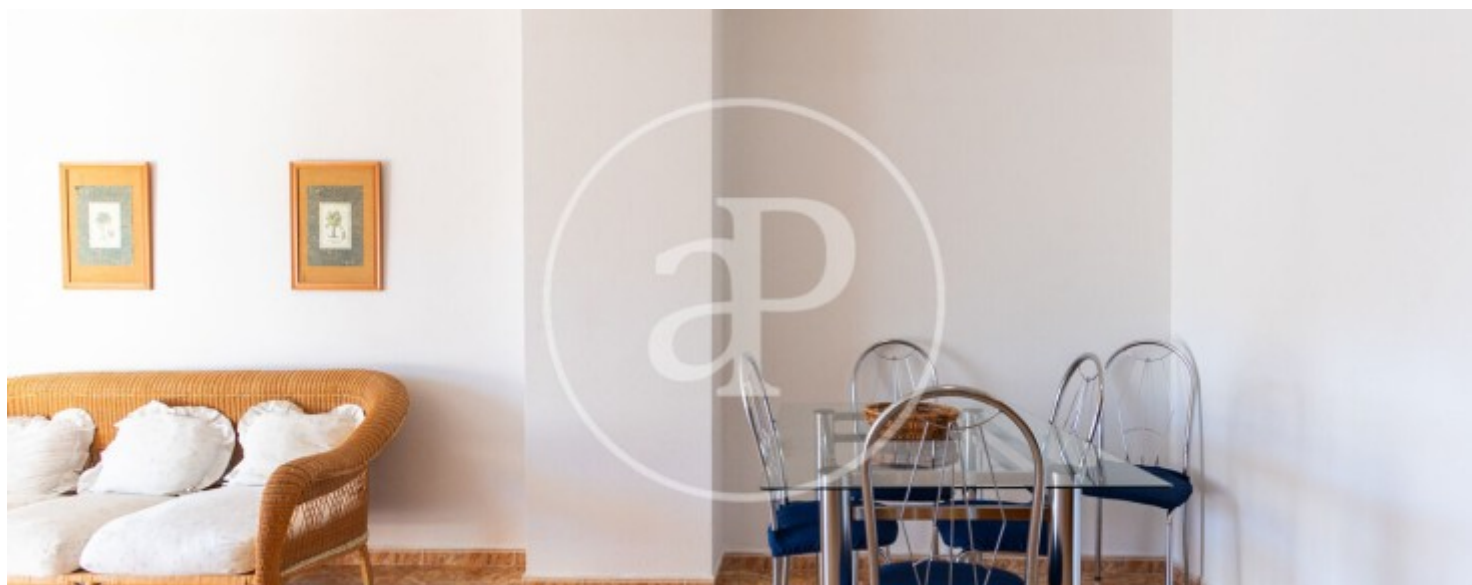
Xilxes

REF. AV2402120



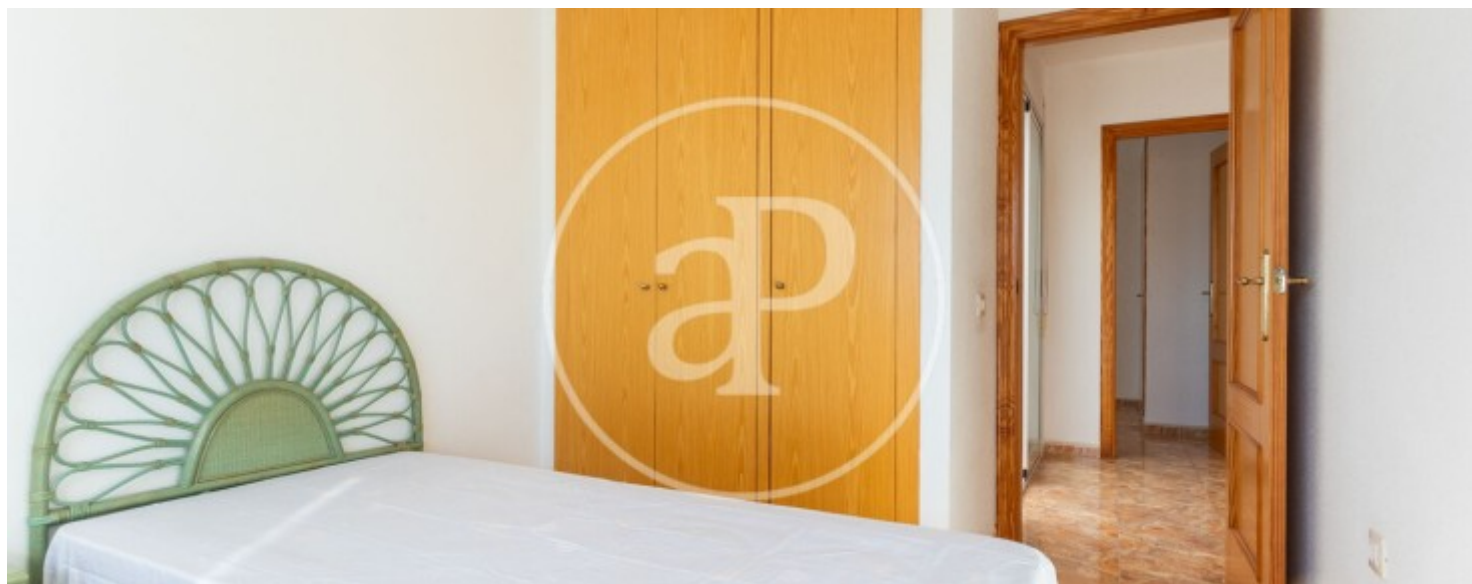
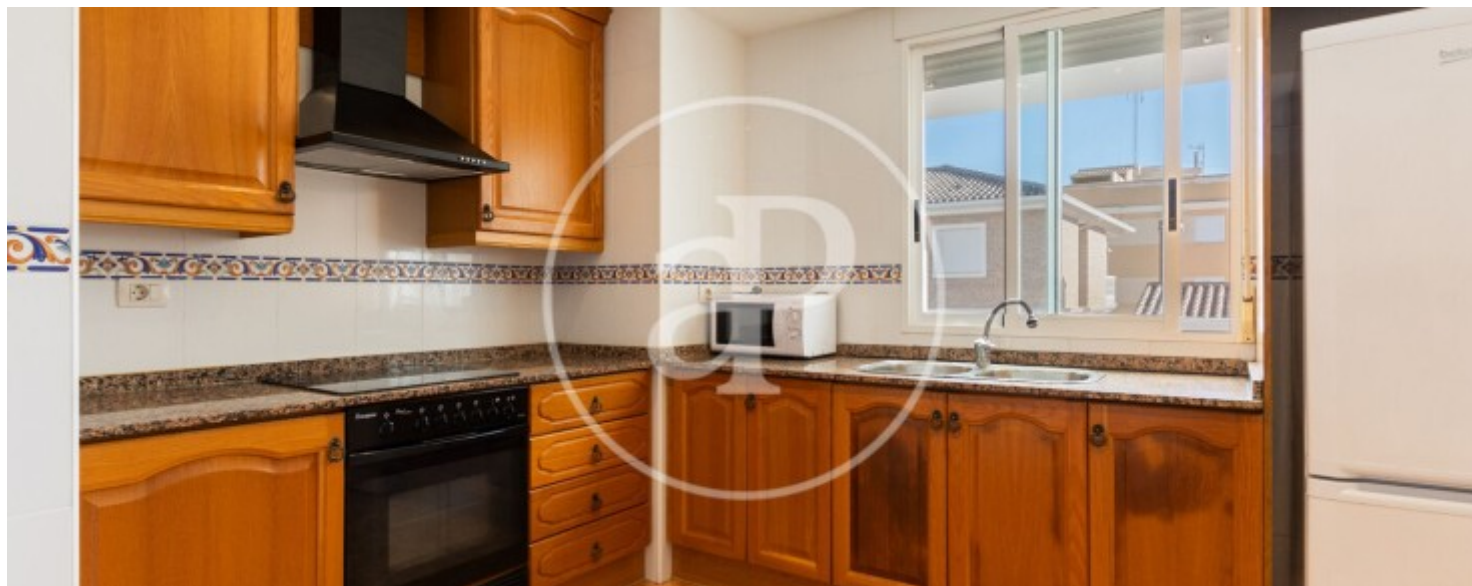
Xilxes

REF. AV2402120



Xilxes

REF. AV2402120





APROPERTIES
REAL ESTATE

Calle Mossen Femades 3, bajo dcha. Ed. Lauria
46002 Valencia
T. 96 128 59 65
www.aproperties.es

Xilxes

REF. AV2402120



The information about any property is not binding to any offer or contract. Any verbal or written declaration made by aProperties with regards to the value or condition of the property should not be considered accurate or factual. The pictures make reference to some parts of the property at the times that they were taken. The areas, dimensions and distances that are given are approximate and should be checked by the client. The images are computer generated and are just an approximate indication of the real appearance of the property; these may change at any time. The information with regards to the property may also change at any time.



For **more information** or
to make an appointment

apropertiesvalencia@aproperties.es
Tel: 96 128 59 65
www.aproperties.es