

Ruzafa, Valencia

REF. AV2203079



Penthouse with terrace for rent in Ruzafa (Valencia)

Features

- ✓ Heating
- ✓ Furnished
- ✓ AACC
- ✓ Terrace
- ✓ Lift

Price

1,450 €

Surface

85 m²

Bedrooms

2

Bathrooms

2



Only for lovers of good taste, we present this unique design penthouse, in the heart of Ruzafa.

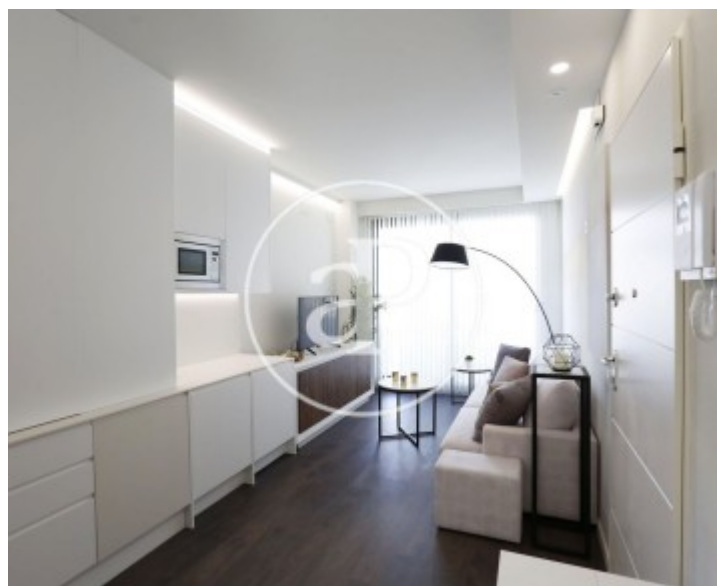
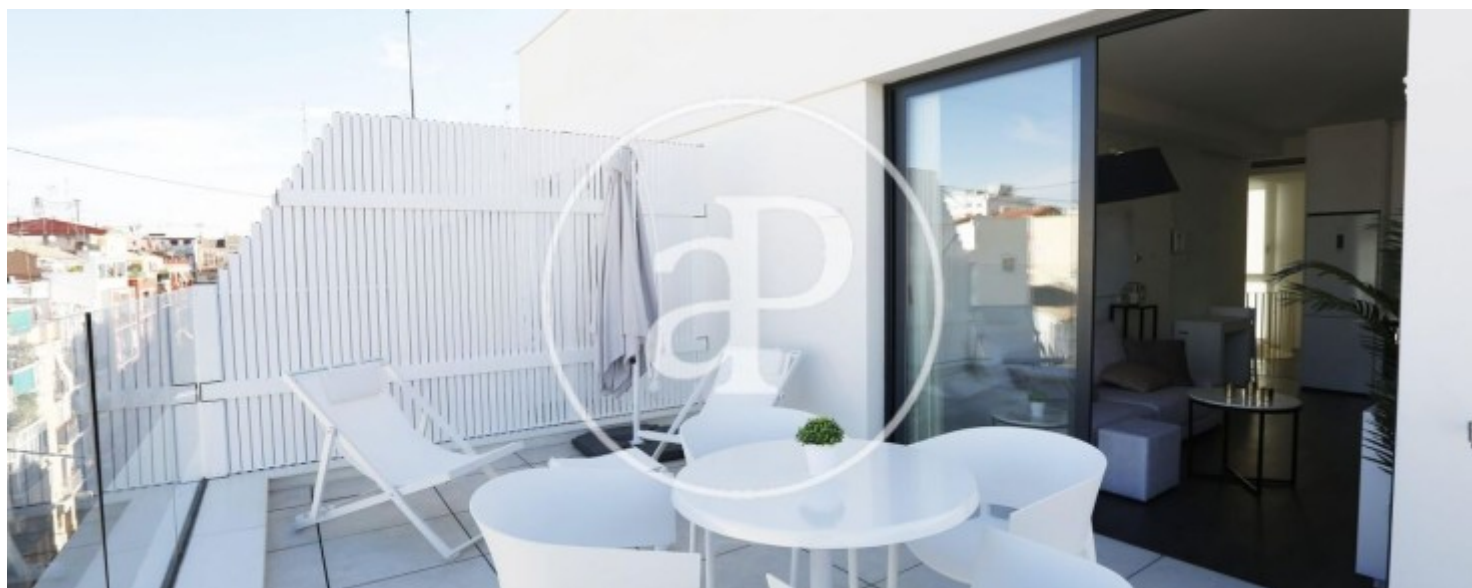
Located in one of the neighborhoods in greatest demand to live or vacation in Valencia, is this elegant and bright duplex penthouse with modern decoration and great qualities, with a total of 85 m². The property has 2 bedrooms and 2 full bathrooms, one room with a double bed of 1.50 and an en-suite bathroom and the second room with two beds of 90. Its kitchen has all the equipment and is integrated into its comfortable and bright dining room, which has access to its large terrace of 15 m². The house also has unique details such as: High-speed Fiber Optic Internet,

centralized hot and cold air conditioning through ducts in all rooms, modern ceilings with integrated Led lights, parquet flooring as well as all the basic equipment to enter to live immediately. Lastly, the common areas of the estate complement your stay with: Common terrace-solarium, Rooftop chill out with outdoor furniture and from where you can enjoy charming views of the city, storage room for your bicycle, bicycle rental and laundry room washing and drying. The location is ideal because it is located a few minutes walk from the NORTE train station, XÀTIVA and COLÓN metro...

Contact us,
we will be happy to assist you,
to offer you more details and information.

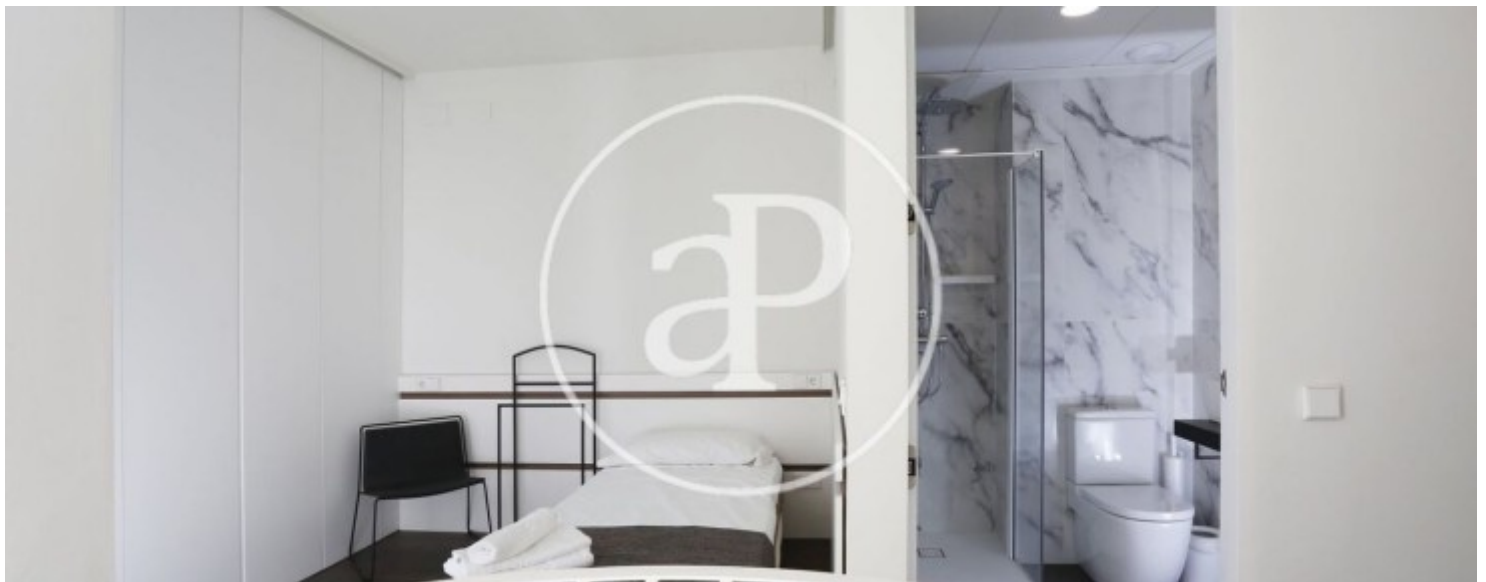
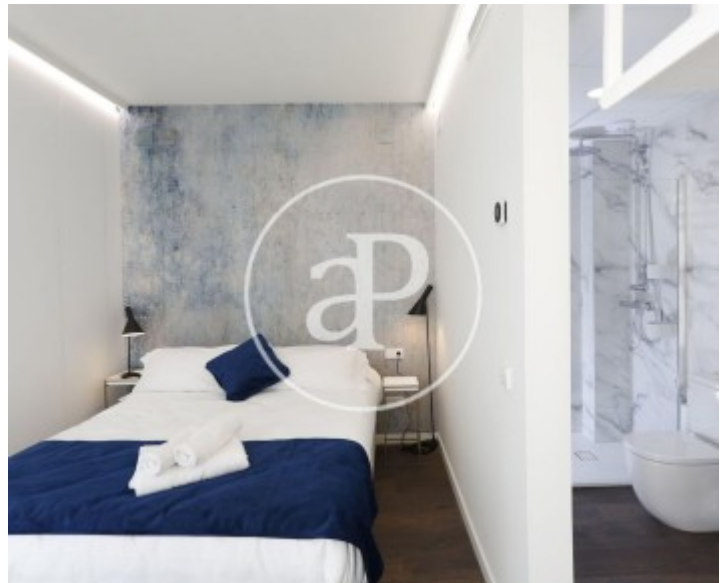
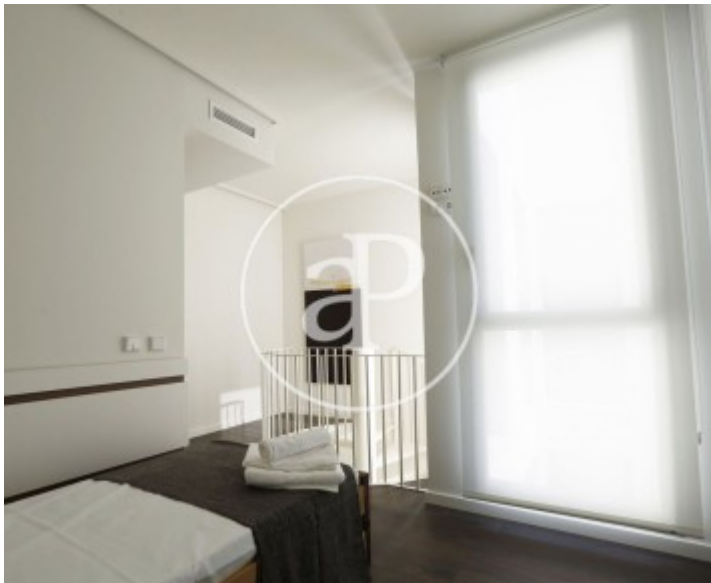
Ruzafa, Valencia

REF. AV2203079



Ruzafa, Valencia

REF. AV2203079



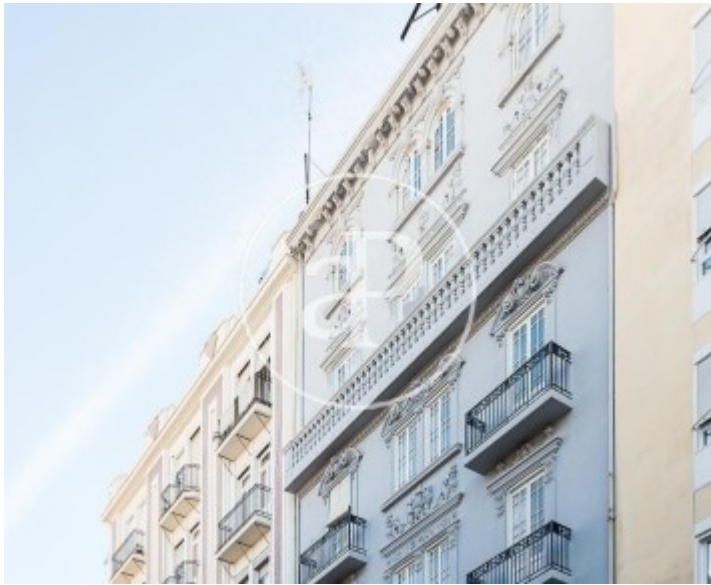
Ruzafa, Valencia

REF. AV2203079



Ruzafa, Valencia

REF. AV2203079



The information about any property is not binding to any offer or contract. Any verbal or written declaration made by aProperties with regards to the value or condition of the property should not be considered accurate or factual. The pictures make reference to some parts of the property at the times that they were taken. The areas, dimensions and distances that are given are approximate and should be checked by the client. The images are computer generated and are just an approximate indication of the real appearance of the property; these may change at any time. The information with regards to the property may also change at any time.



For **more information** or
to make an appointment

apropertiesvalencia@aproperties.es
Tel: 96 128 59 65
www.aproperties.es