



Ruzafa, Valencia

REF. AV2505012

Exclusive house with large terrace and garage space, in Ruzafa

Features

- ✓ Heating
- ✓ Terrace
- ✓ Has parking
- ✓ AACC
- ✓ Lift

Price

1,600 €

Surface

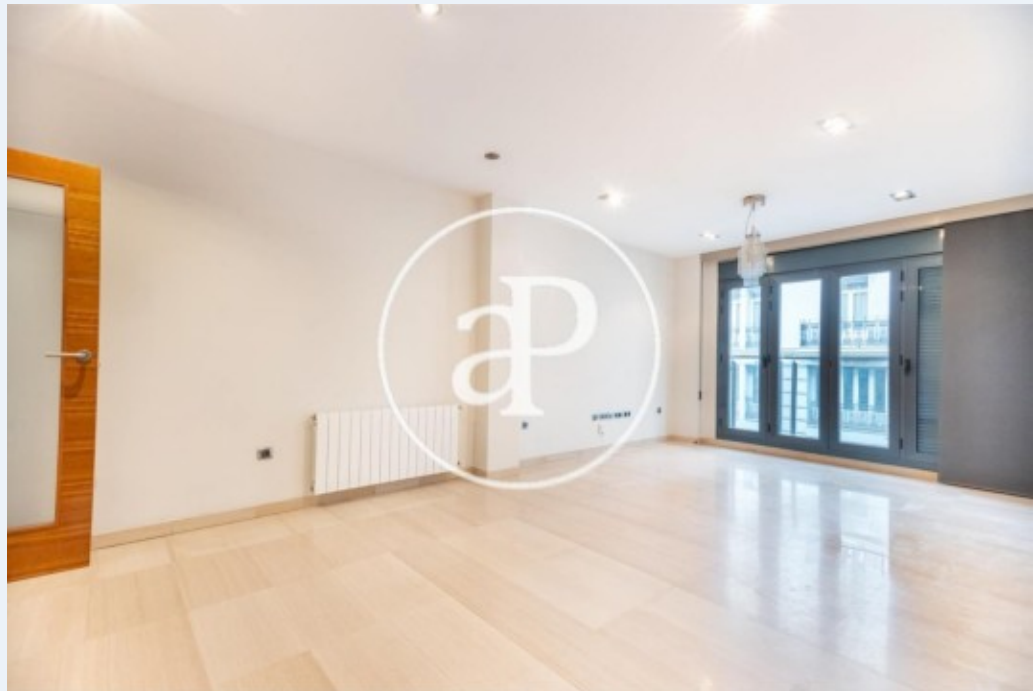
94 m²

Bedrooms

3

Bathrooms

2



This charming house has a useful area of 111m2 and a total of three bedrooms with fitted wardrobes and two bathrooms.

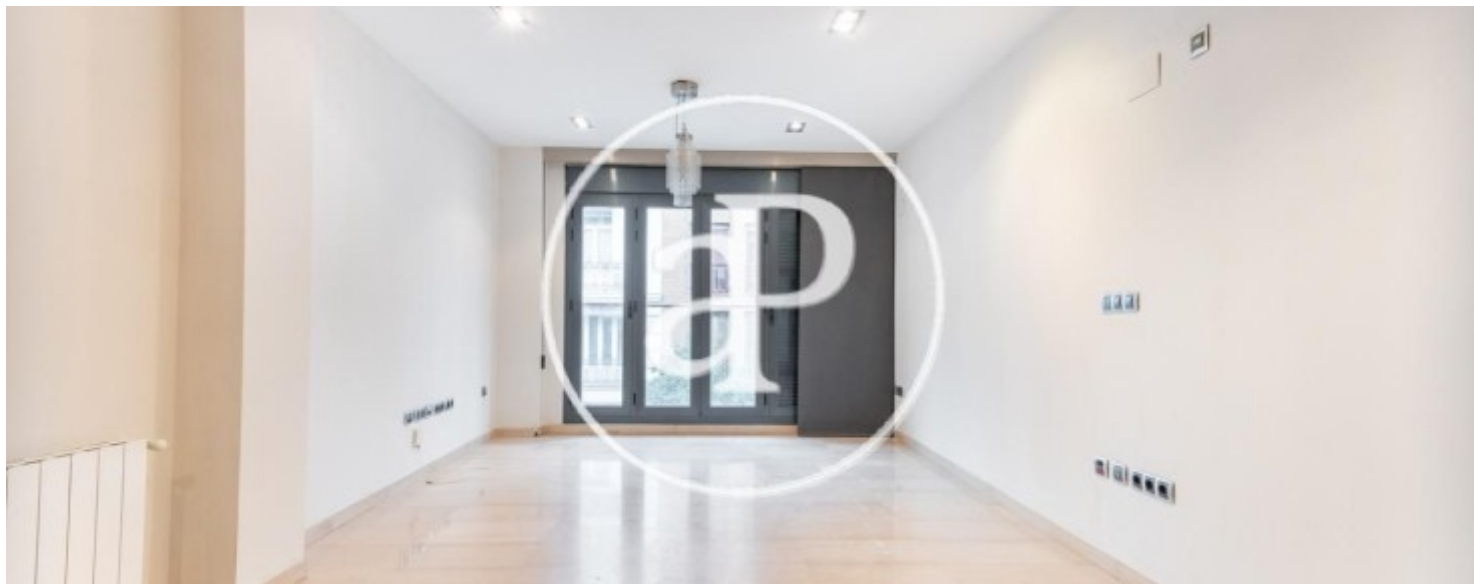
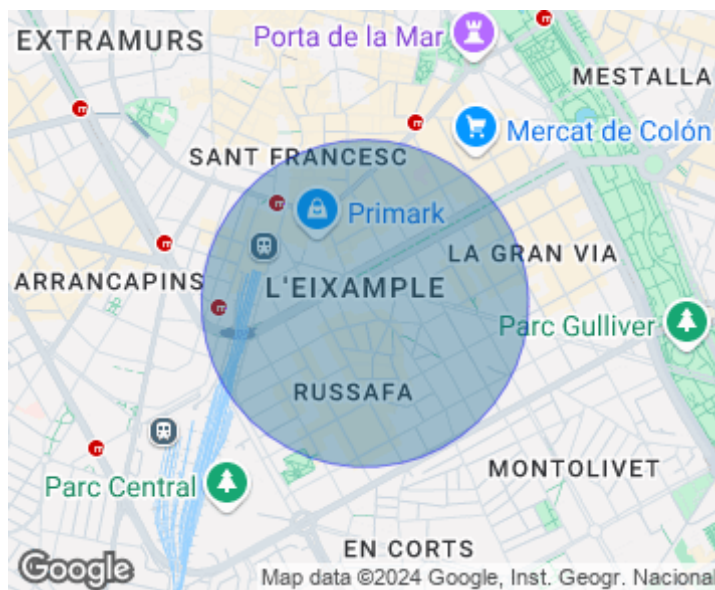
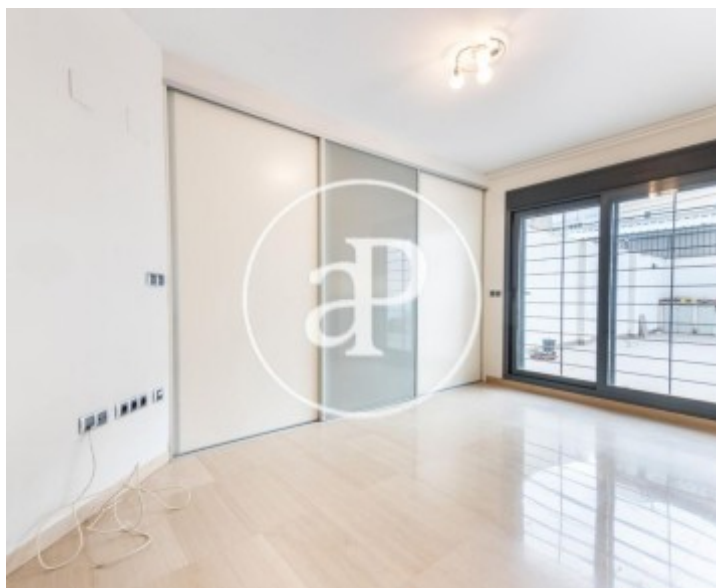
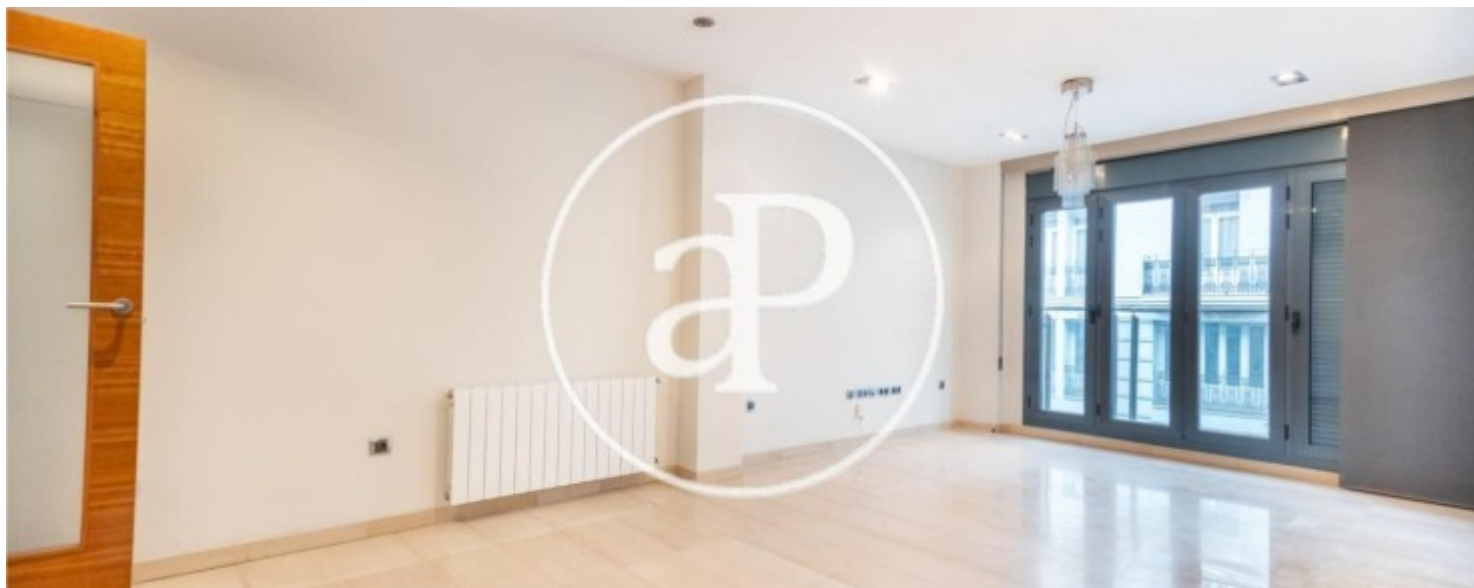
It also has a comfortable and functional independent and equipped kitchen. Its large living room and its very large terrace are the impact areas of this house. The whole property is decorated with exquisite details that in combination with its wide range, will make you enjoy pleasant moments with your family or friends, or just relax after a long day of work. The house has floor and marble bathroom, whirlpool, wooden doors and double glazed windows and is rented WITHOUT FURNITURE. With an excellent and unique location, it is located in the fashionable

Valencian district, Ruzafa. Emerging and full of activity but at the same time familiar and very calm. Only 5 minutes from the Town Hall, the Plaza de Toros and the emblematic Colón street and very well connected with EMT bus stops, close to schools, supermarkets and pharmacies. Community and IBI expenses are included. 2 months of demonstrable bonds and solvences are required. Let yourself be conquered by this exclusive floor. Contact us, we will be happy to assist you!

Contact us,
we will be happy to assist you,
to offer you more details and information.

Ruzafa, Valencia

REF. AV2505012



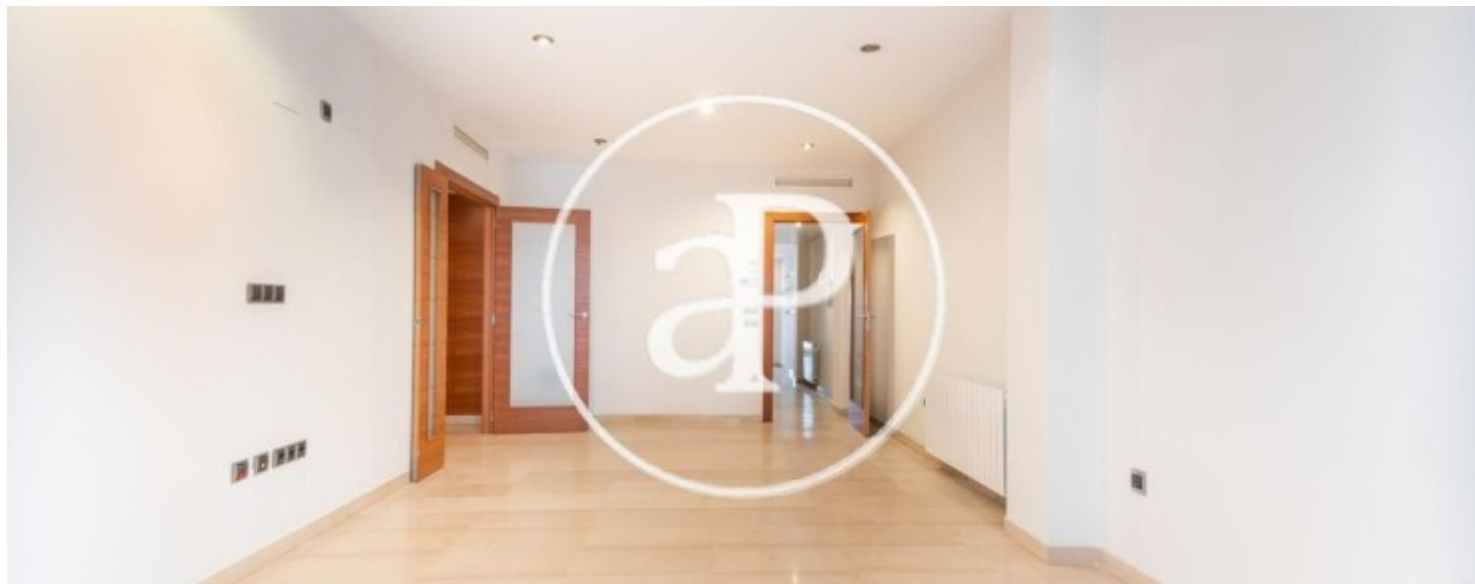
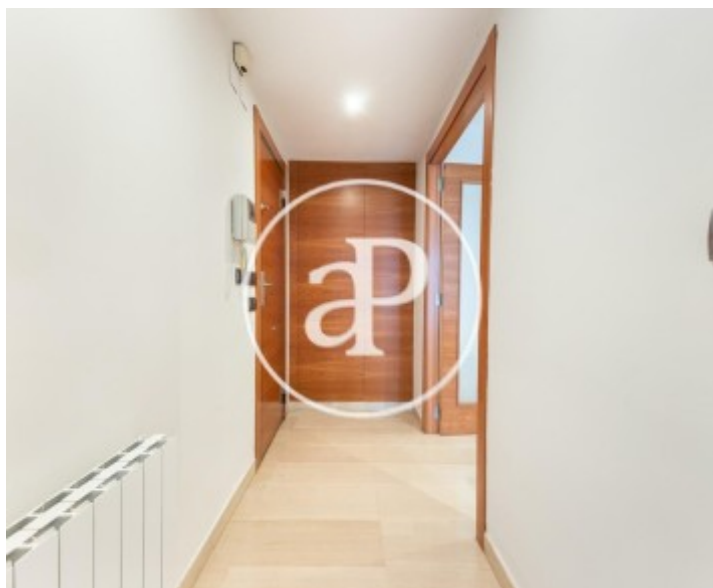
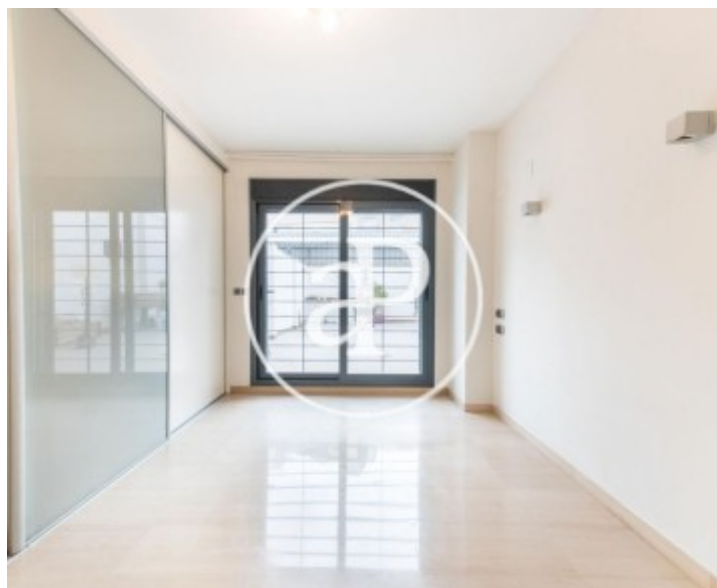
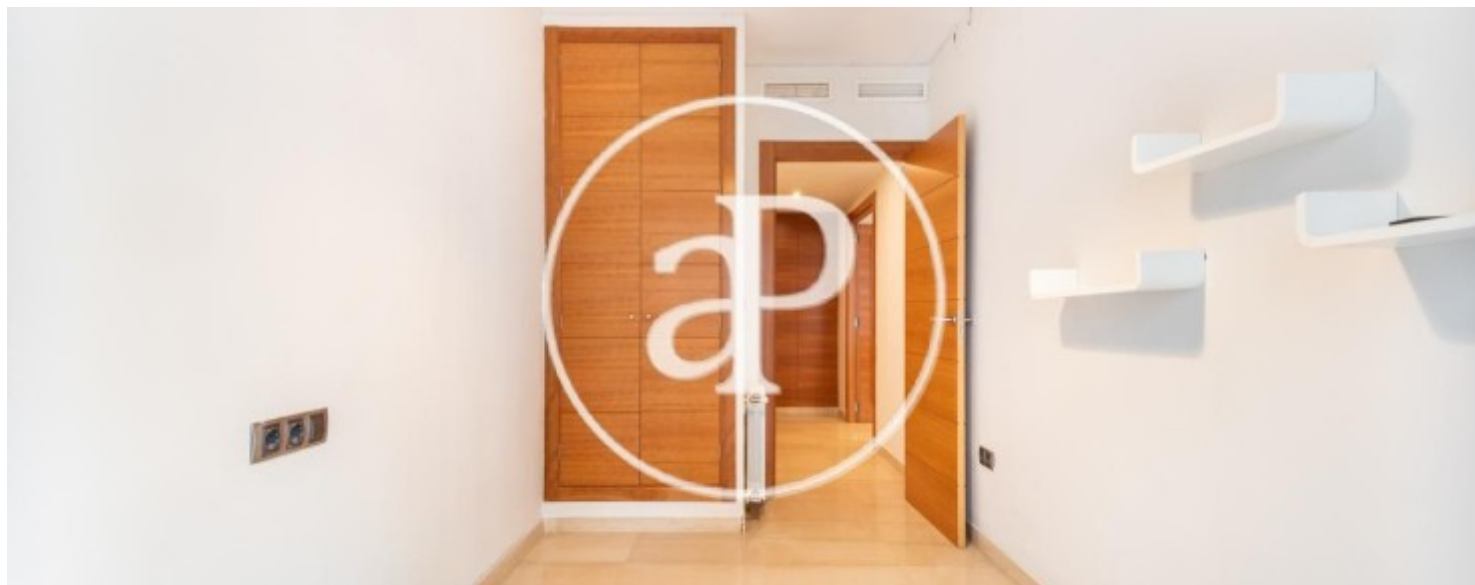
Ruzafa, Valencia

REF. AV2505012



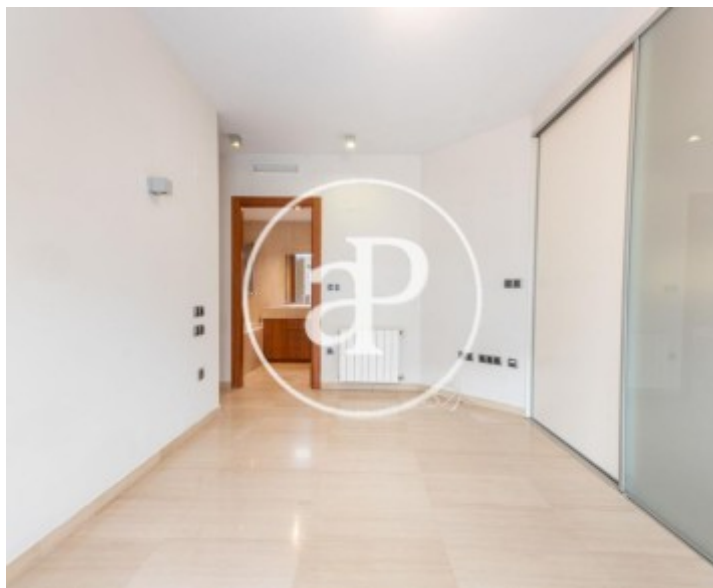
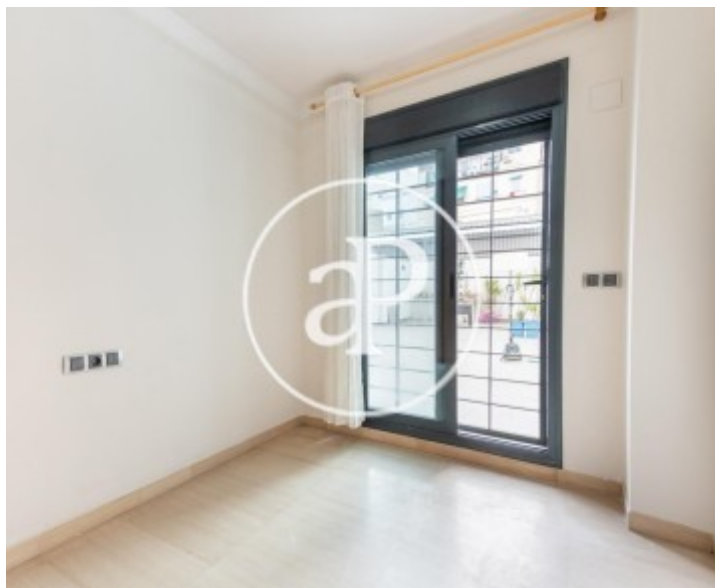
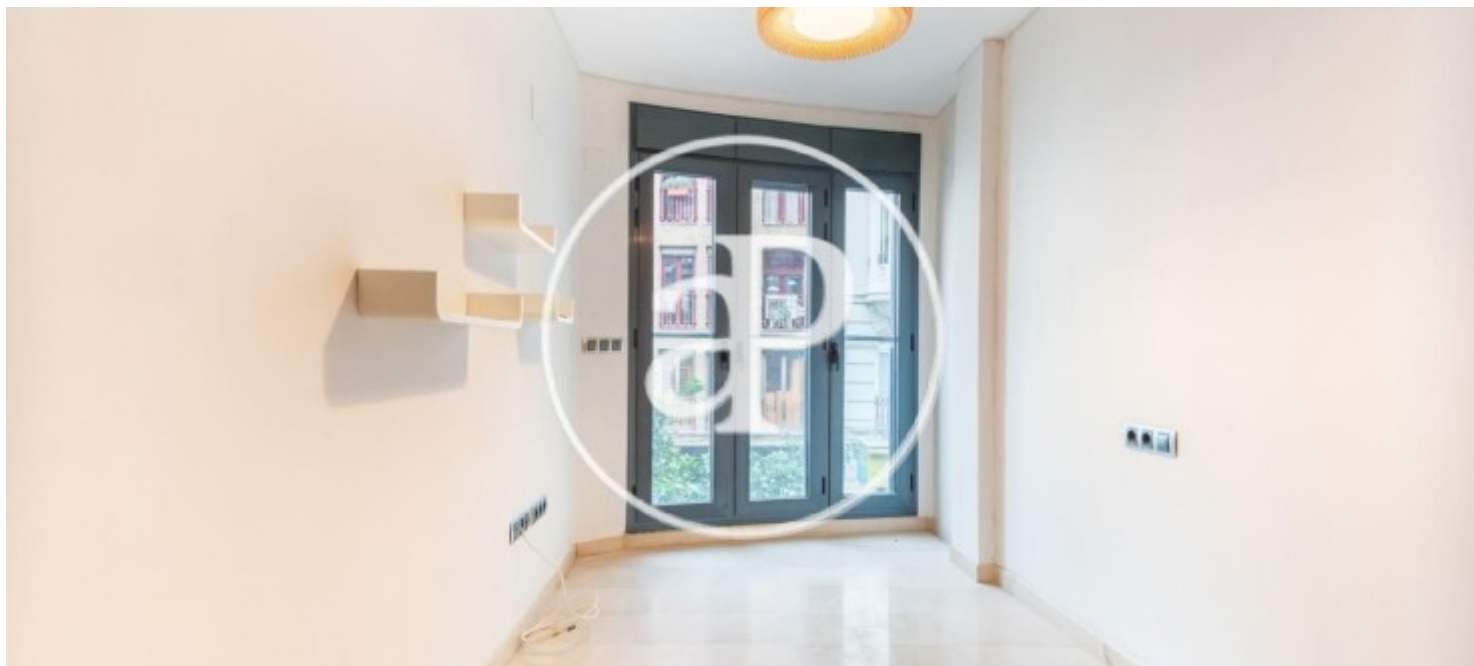
Ruzafa, Valencia

REF. AV2505012



Ruzafa, Valencia

REF. AV2505012



The information about any property is not binding to any offer or contract. Any verbal or written declaration made by aProperties with regards to the value or condition of the property should not be considered accurate or factual. The pictures make reference to some parts of the property at the times that they were taken. The areas, dimensions and distances that are given are approximate and should be checked by the client. The images are computer generated and are just an approximate indication of the real appearance of the property; these may change at any time. The information with regards to the property may also change at any time.

For **more information** or
to make an appointment

apropertiesvalencia@aproperties.es
Tel: 96 128 59 65
www.aproperties.es