

Ruzafa, Valencia

REF. AV2511053

Penthouse for rent with Terrace in Ruzafa (Valencia)

Features

- ✓ Views
- ✓ Heating
- ✓ Furnished
- ✓ AACC
- ✓ Terrace
- ✓ Lift
- ✓ Has parking

Surface

152 m²

Bedrooms

3

Bathrooms

2

Price

2,800 €



aProperties Real Estate is pleased to present this spectacular duplex penthouse, located in one of Valencia's most sought-after and vibrant areas: El Ensanche, right in the heart of Ruzafa.

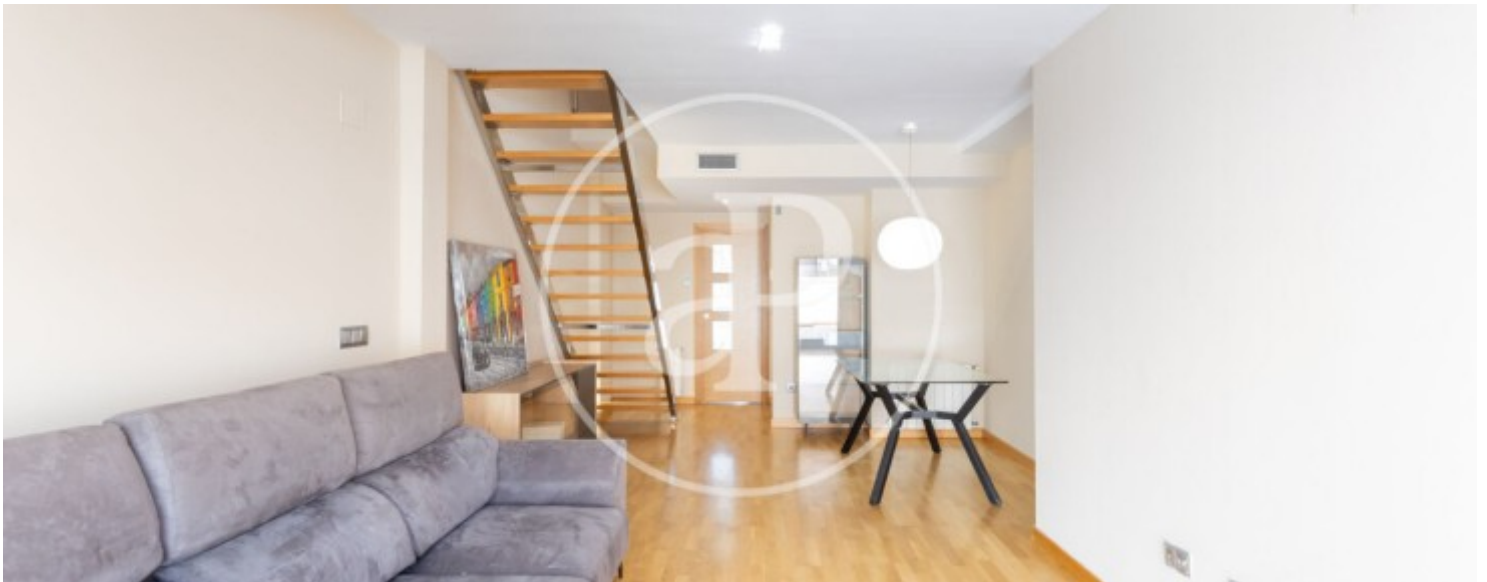
This is an exclusive residence that combines space, brightness, comfort, and an unbeatable location, ideal both for families looking for their forever home and for those who wish to enjoy the cosmopolitan lifestyle that defines this emblematic neighborhood. With a surface area of 152 m² (according to the land registry), this property offers a well-planned and functional layout designed to make the most of every square meter. On the main floor, there is a spacious and

bright living-dining room with direct access to a magnificent terrace—the perfect place to enjoy gatherings with friends, family meals outdoors, or simply relax under the Mediterranean sun. The terrace, equipped with a motorized awning, becomes the ideal spot to enjoy long summer afternoons. This floor also features a fully equipped independent kitchen with access to a practical balcony, as well as a bedroom with fitted wardrobes and a full bathroom. On the upper floor, the property offers two additional comfortable bedrooms, both with fitted wardrobes, a second full bathroom, and a...

Contact us,
we will be happy to assist you,
to offer you more details and information.

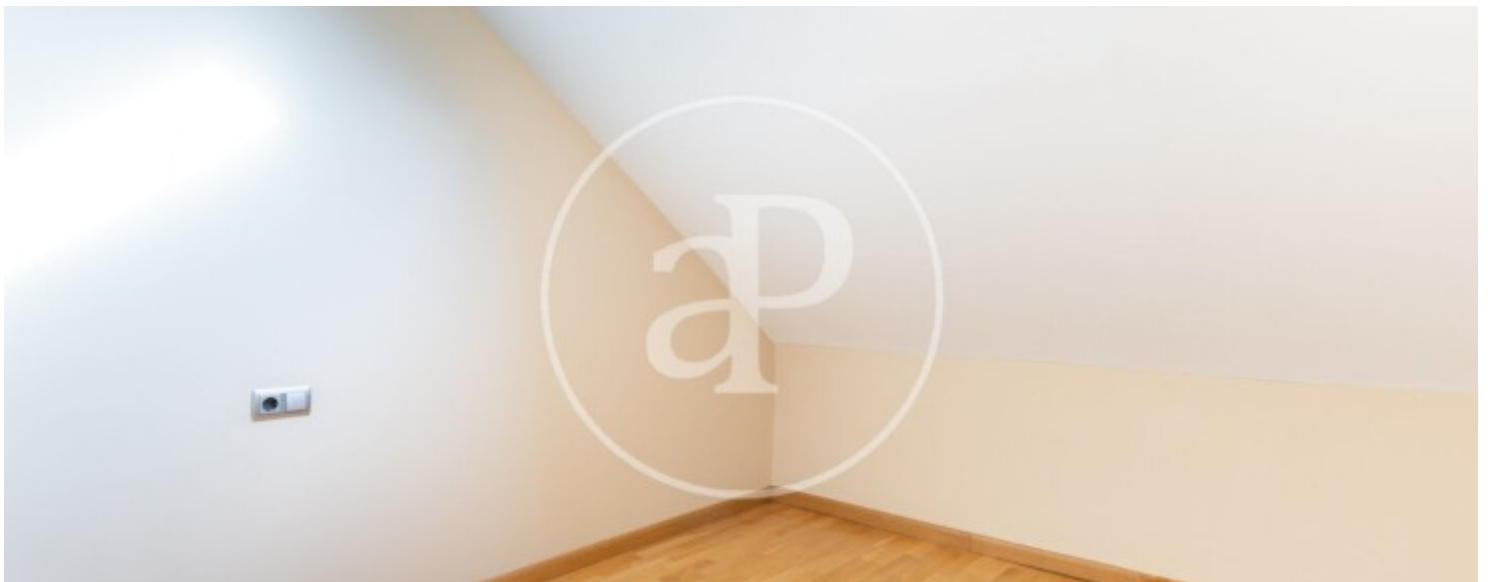
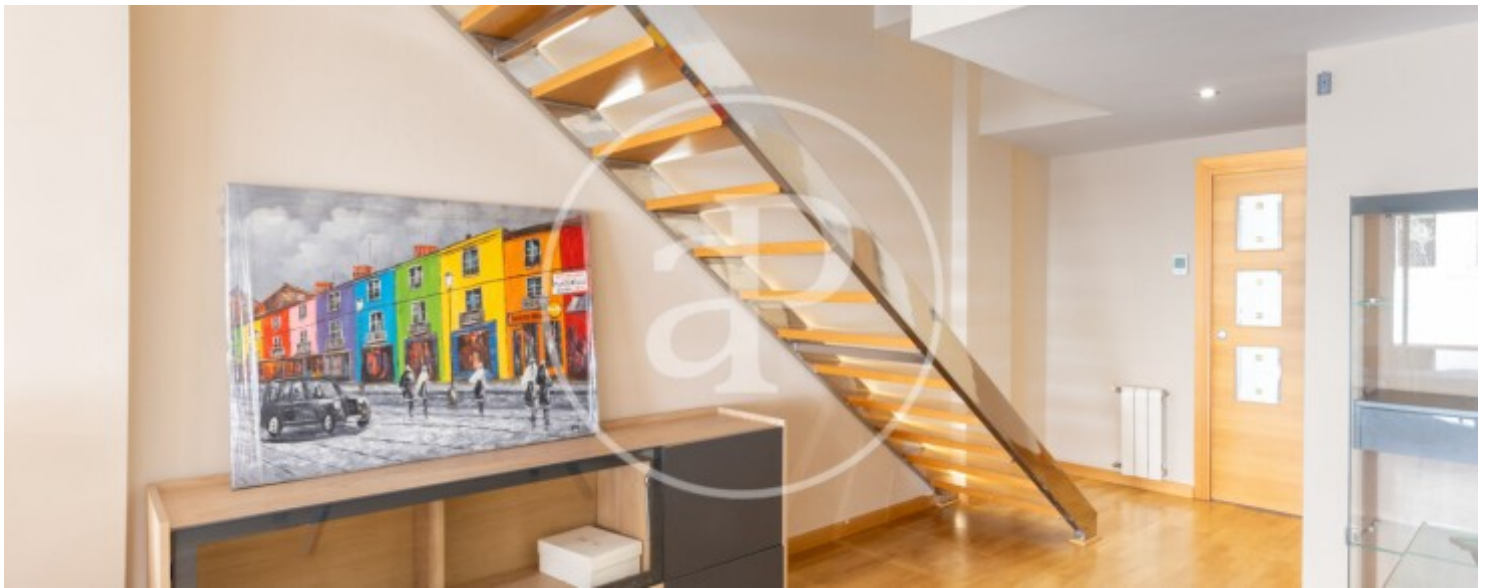
Ruzafa, Valencia

REF. AV2511053



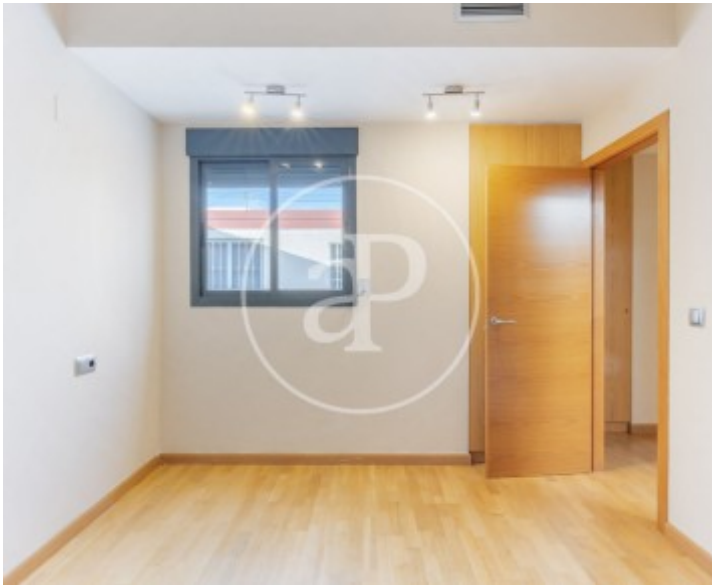
Ruzafa, Valencia

REF. AV2511053



Ruzafa, Valencia

REF. AV2511053



Ruzafa, Valencia

REF. AV2511053



The information about any property is not binding to any offer or contract. Any verbal or written declaration made by aProperties with regards to the value or condition of the property should not be considered accurate or factual. The pictures make reference to some parts of the property at the times that they were taken. The areas, dimensions and distances that are given are approximate and should be checked by the client. The images are computer generated and are just an approximate indication of the real appearance of the property; these may change at any time. The information with regards to the property may also change at any time.

For **more information** or
to make an appointment

apropertiesvalencia@aproperties.es
Tel: 96 128 59 65
www.aproperties.es