

Pla del remei, Valencia

REF. AV2003018



## Two bedroom apartment in Pla del Remei de València

### Features

Surface

**100 m<sup>2</sup>**

Bedrooms

**2**

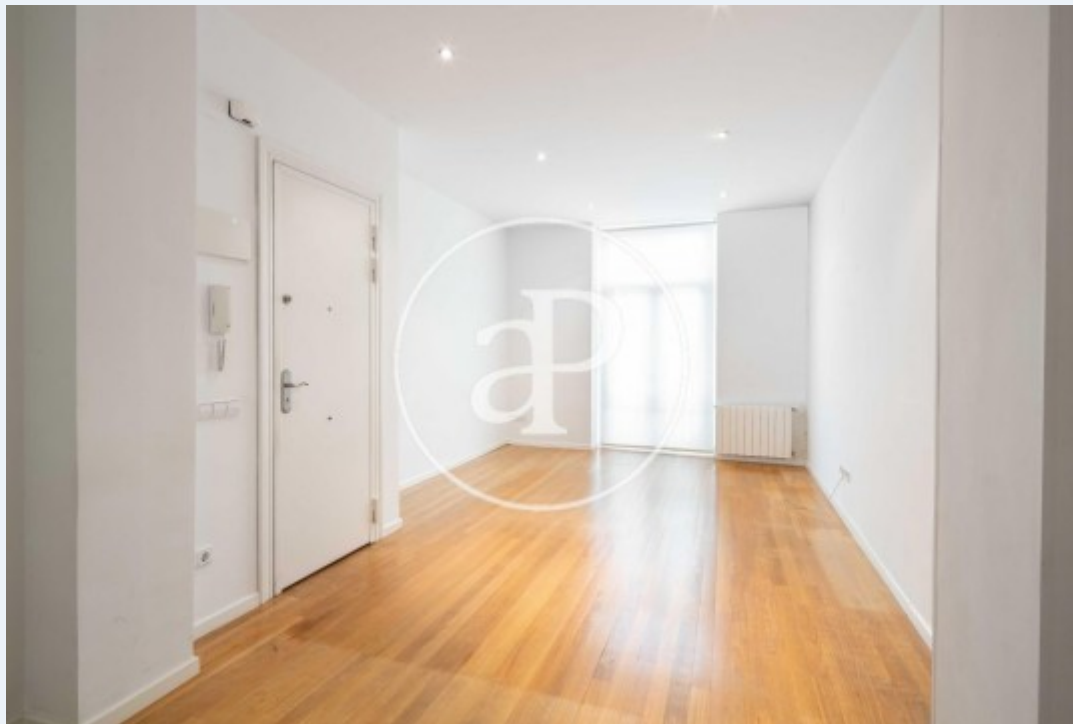
Bathrooms

**2**

✓ Heating ✓ Lift

Price

**1,200 €**



**In the exclusive area of Pla del Remei and in one of its main roads, we find this splendid house with two bedrooms and two bathrooms.**

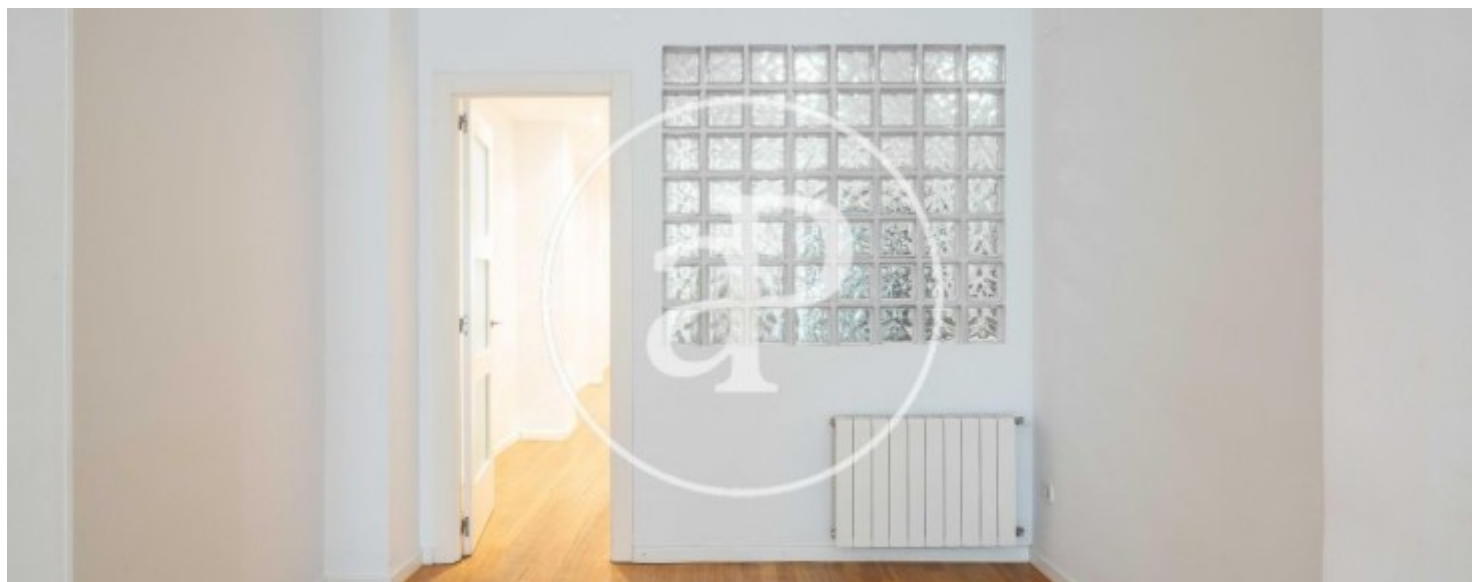
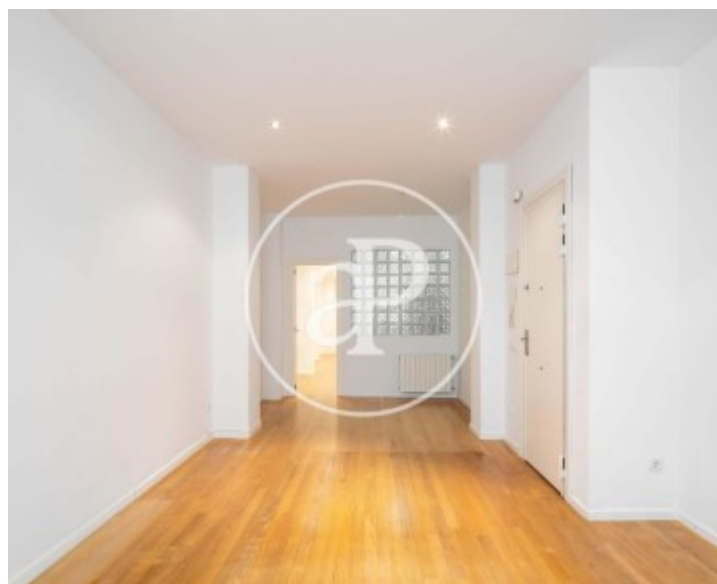
The house we offer has a logical distribution to be comfortably inhabited, with separation of the night and day areas. The property is unfurnished but with its kitchen equipped with appliances of first brands and practically new. We highlight from this floor its luminosity granted by its large windows, which we perceive how much we cross the entrance threshold. As for comfort, the house is parquet based on all its surfaces, with the exception of wet areas. It has built-in wardrobes in hall and rooms as well as natural gas heating. The

property is located in an elegant street in the center of Valencia, has all the services around it: Schools, supermarkets, small shops in the neighborhood and the necessary communications to travel anywhere in Valencia: Metro, buses of different lines, etc. . Its location in the center of the City, configures it as a comfortable and lively, spacious and only three minutes from the Town Hall Square. If you want to know this beautiful home, contact us.

**Contact us,**  
we will be happy to assist you,  
to offer you more details and information.

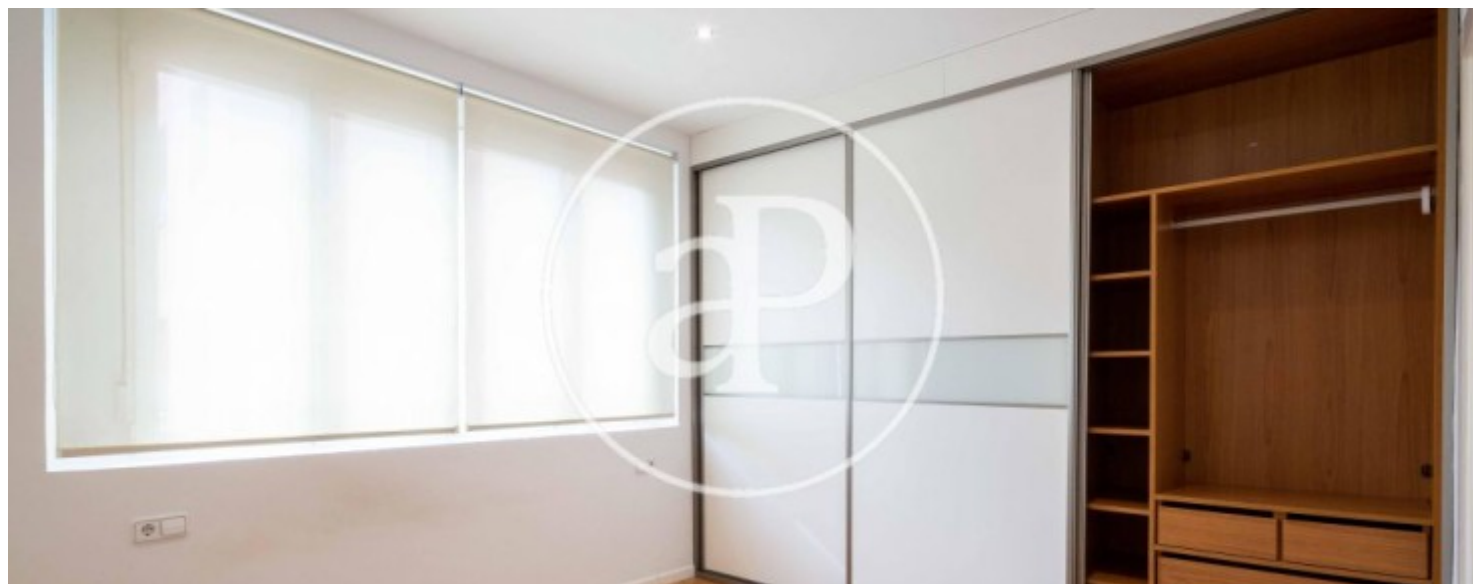
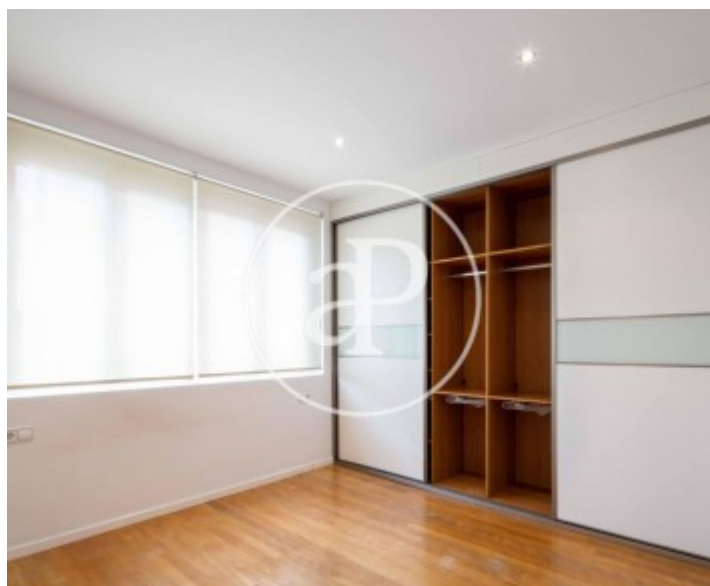
Pla del remei, Valencia

REF. AV2003018



Pla del remei, Valencia

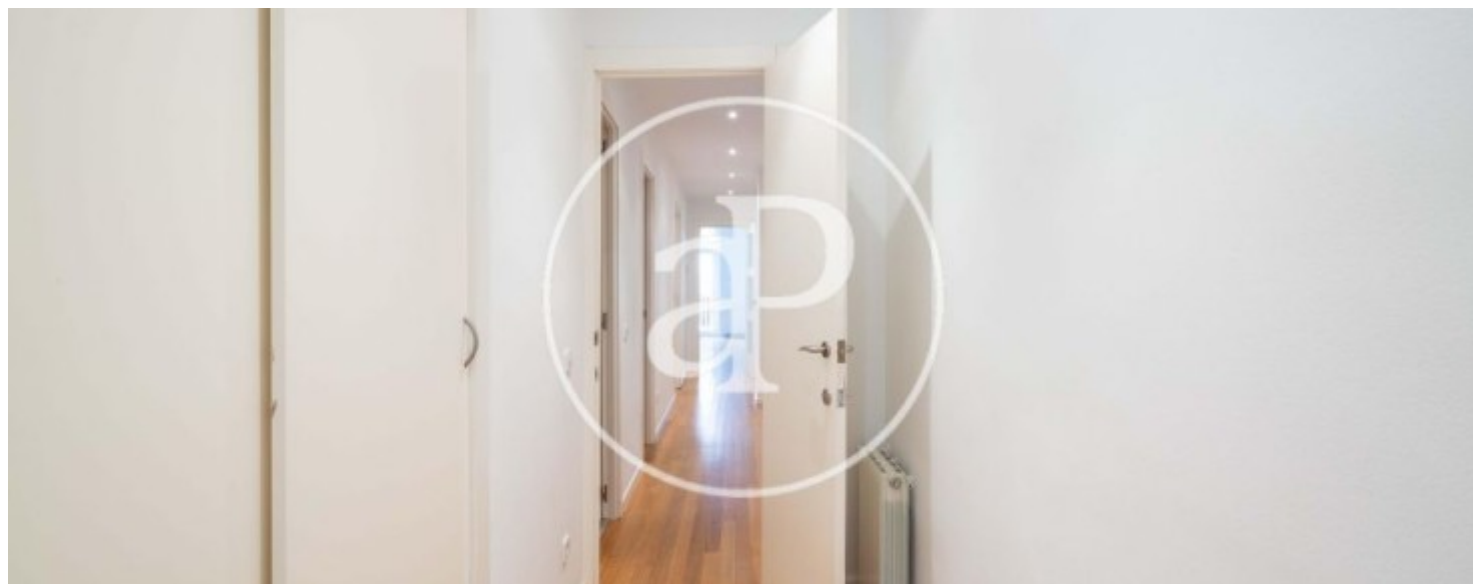
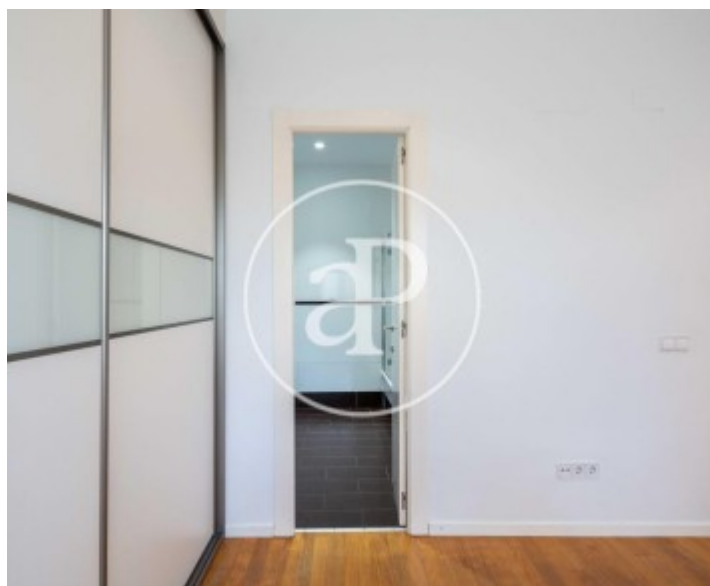
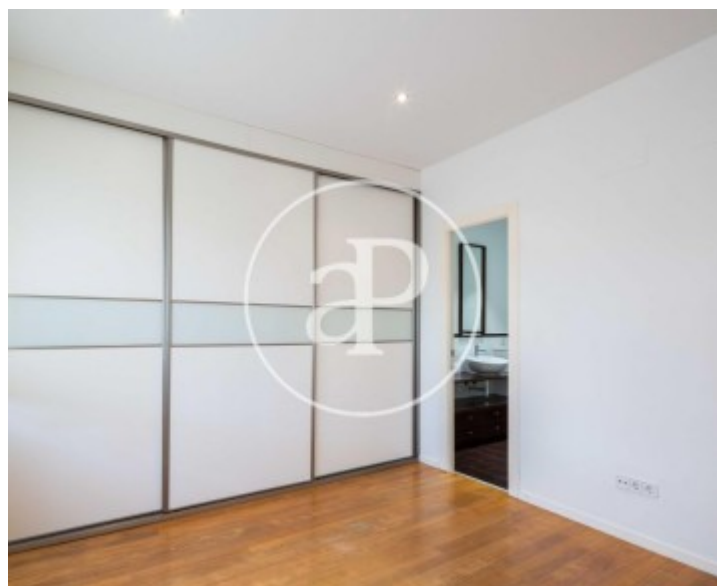
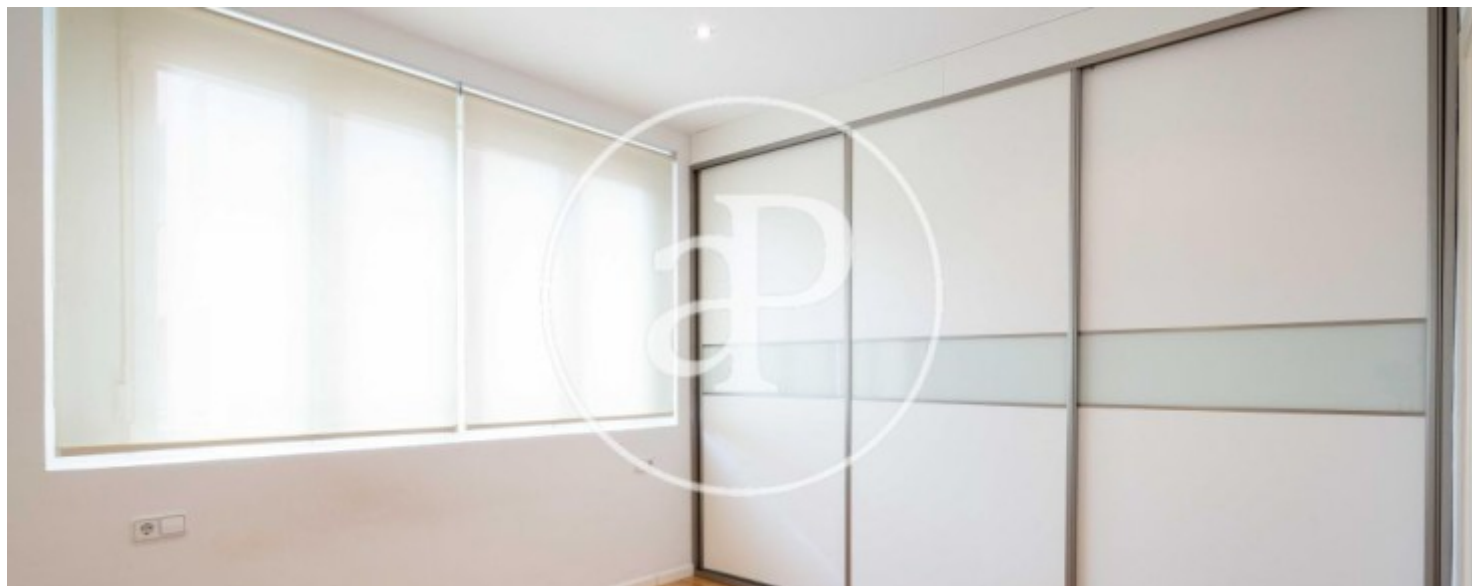
REF. AV2003018





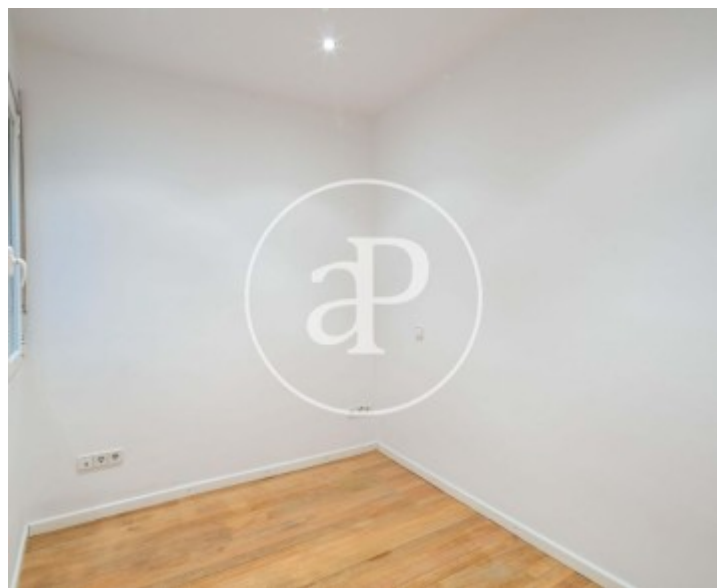
Pla del remei, Valencia

REF. AV2003018



Pla del remei, Valencia

REF. AV2003018



The information about any property is not binding to any offer or contract. Any verbal or written declaration made by aProperties with regards to the value or condition of the property should not be considered accurate or factual. The pictures make reference to some parts of the property at the times that they were taken. The areas, dimensions and distances that are given are approximate and should be checked by the client. The images are computer generated and are just an approximate indication of the real appearance of the property; these may change at any time. The information with regards to the property may also change at any time.



For **more information** or  
to make an appointment

[apropertiesvalencia@aproperties.es](mailto:apropertiesvalencia@aproperties.es)  
Tel: 96 128 59 65  
[www.aproperties.es](http://www.aproperties.es)