

Pla del remei, Valencia

REF. VV2601013

# Flat for sale in Pla del remei (Valencia)

## Features

- ✓ Views
- ✓ Heating
- ✓ Lift
- ✓ Concierge
- ✓ Has parking

Surface  
**290 m<sup>2</sup>**

Bedrooms  
**5**

Bathrooms  
**3**

Price  
**1,350,000 €**



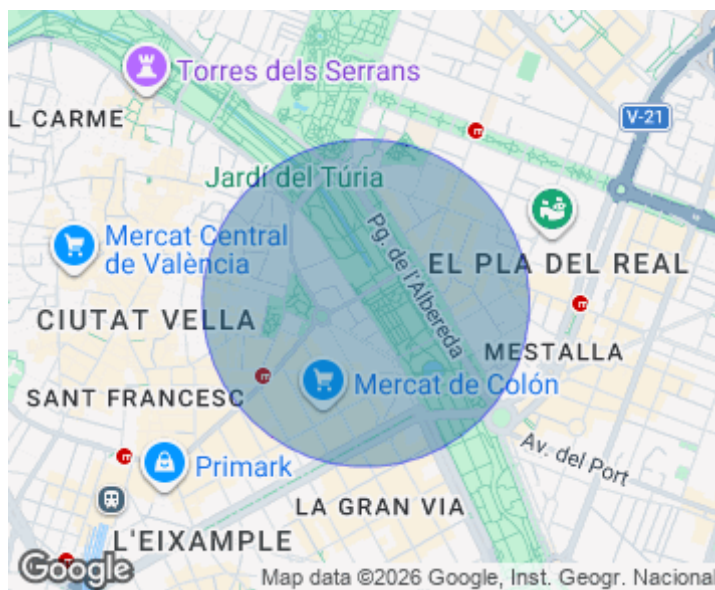
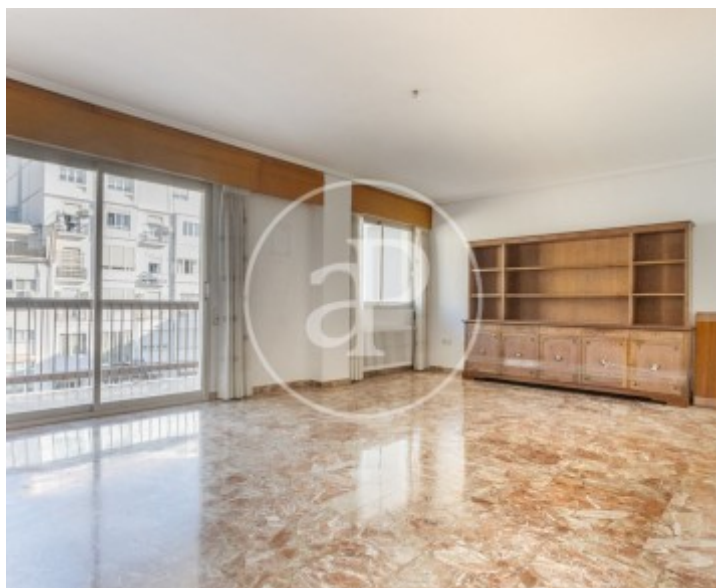
Exclusive residence in Pla del Remei, offering 290 sqm, located in one of Valencia's most sought-after areas, on Sorní Street, next to the Turia River Gardens and just steps from the iconic Colón Market. The property stands out for its spaciousness and excellent layout. It features a large, bright living room, a dining room with balcony, and a generously sized kitchen with a service room. The sleeping area comprises four bedrooms and three full bathrooms, one of them en suite in the master bedroom. The apartment is in original condition, presenting a unique opportunity to design and carry out a dream renovation, fully tailored to personal tastes and needs, in a privileged setting. Located in the heart of Pla del Remei, one of the city's most elegant and desirable

neighborhoods, with all services, shops, and public transport within walking distance. The price includes two parking spaces, an exceptional added value in this prime location. Do not miss this unique opportunity. Contact us for further information and to arrange a viewing.

**Contact us,**  
we will be happy to assist you,  
to offer you more details and information.

Pla del remei, Valencia

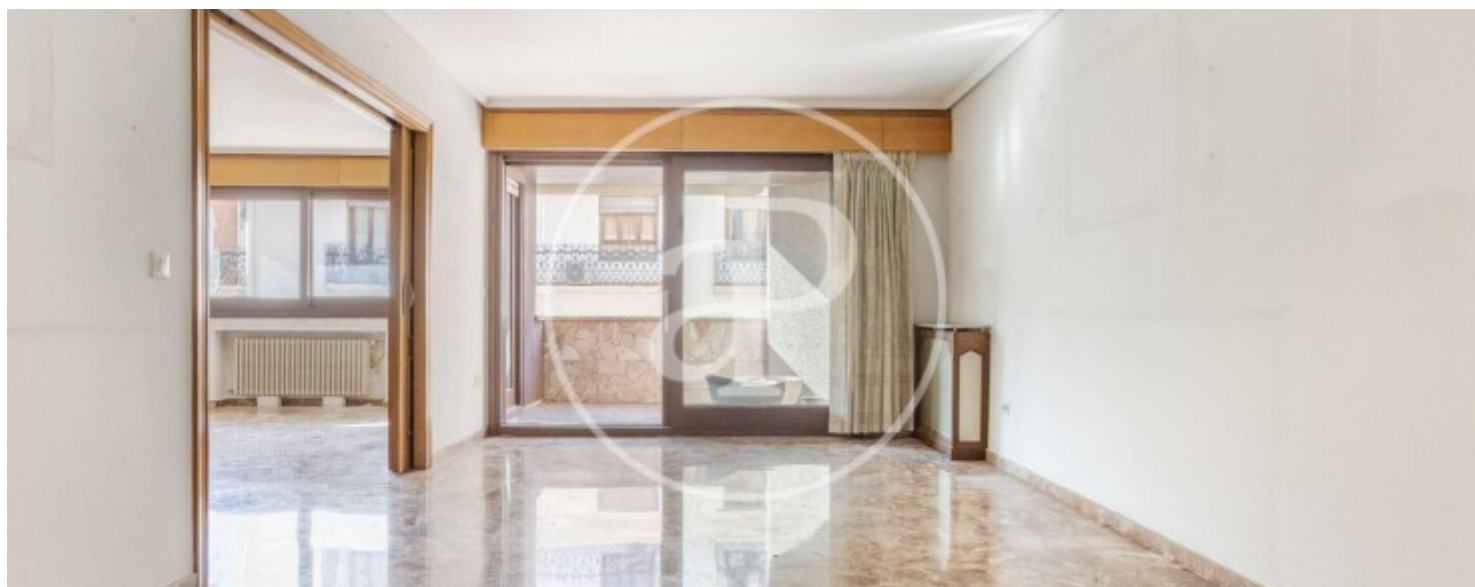
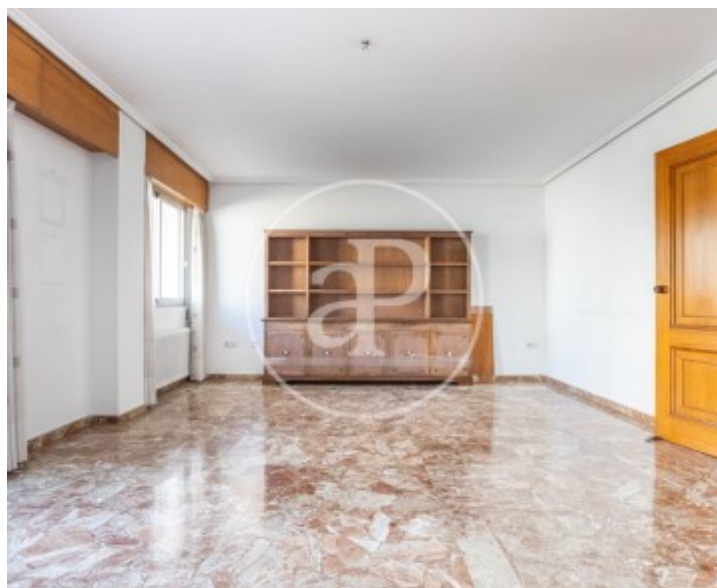
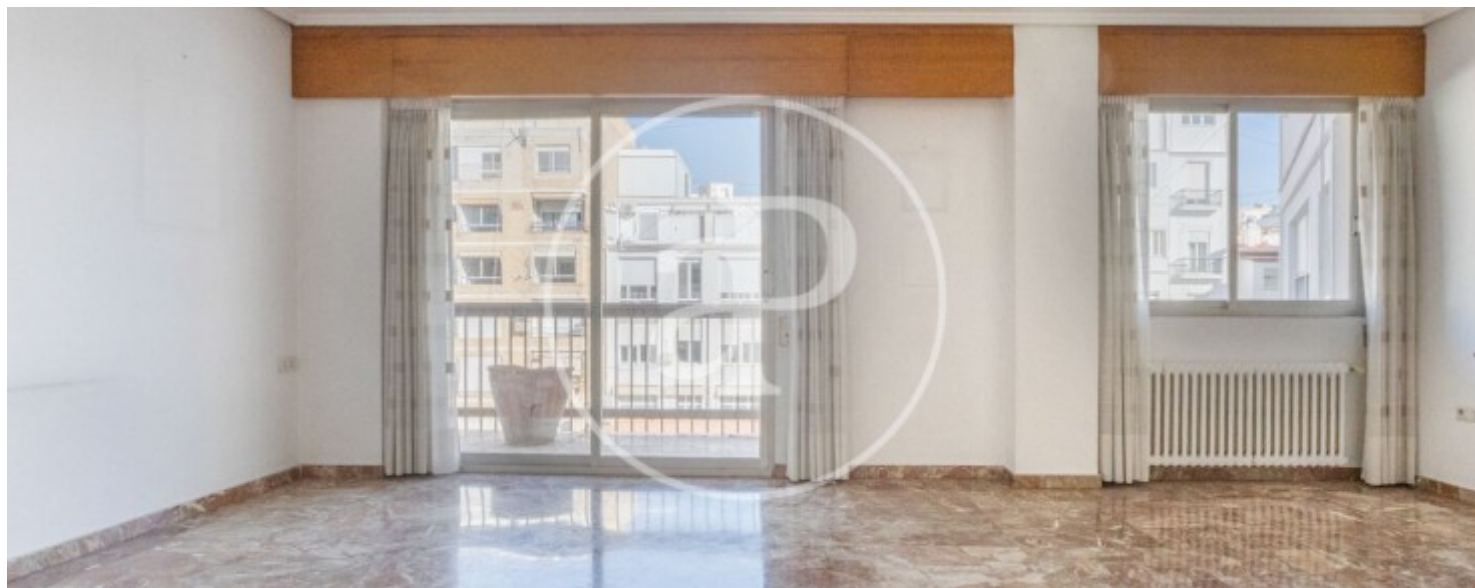
REF. VV2601013





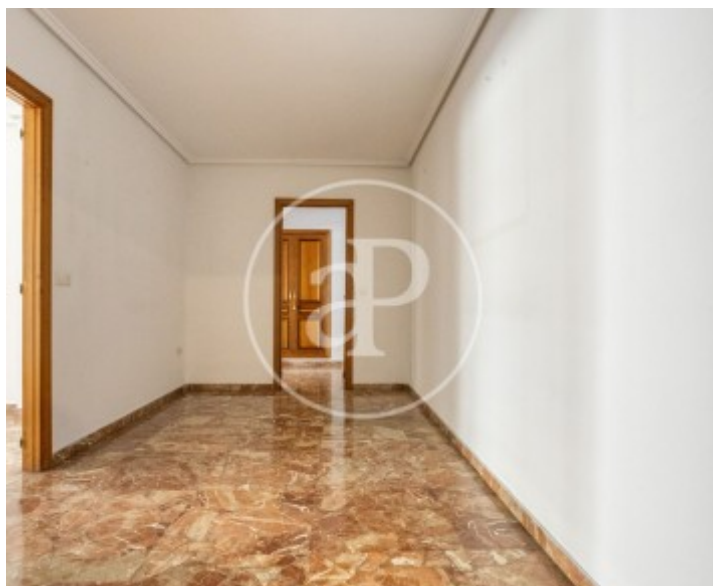
Pla del remei, Valencia

REF. VV2601013



Pla del remei, Valencia

REF. VV2601013





Pla del remei, Valencia

REF. VV2601013



The information about any property is not binding to any offer or contract. Any verbal or written declaration made by aProperties with regards to the value or condition of the property should not be considered accurate or factual. The pictures make reference to some parts of the property at the times that they were taken. The areas, dimensions and distances that are given are approximate and should be checked by the client. The images are computer generated and are just an approximate indication of the real appearance of the property; these may change at any time. The information with regards to the property may also change at any time.

For **more information** or  
to make an appointment

[apropertiesvalencia@aproperties.es](mailto:apropertiesvalencia@aproperties.es)  
Tel: 96 128 59 65  
[www.aproperties.es](http://www.aproperties.es)