



Pla del remei, Valencia

REF. VV2511049

Flat for sale with Terrace in Pla del remei (Valencia)

Features

- ✓ Heating
- ✓ AACC
- ✓ Terrace
- ✓ Lift

Surface

231 m²

Bedrooms

4

Bathrooms

2

Price

1,480,000 €



Aproperties presents this exclusive property located in the heart of Pla del Remei and just a few metres from Colón Street.

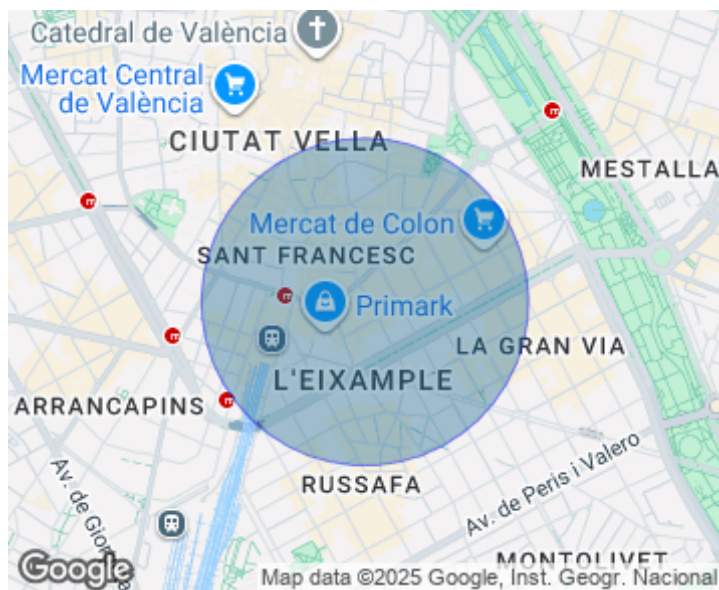
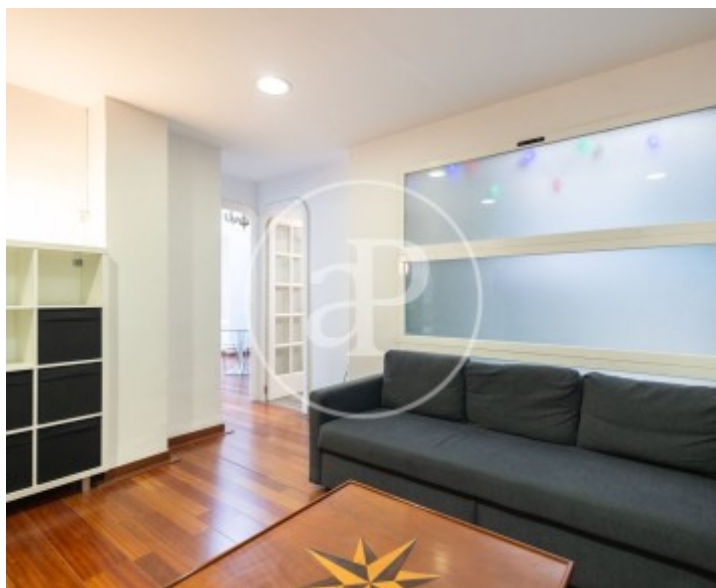
It is situated on the second floor, offering 245 m² of built area and a spacious terrace of nearly 70 m². Currently, the property is divided into three independent apartments intended for short-term rentals. The first apartment features two bedrooms, a living-dining room with direct access to the terrace, an open-plan kitchen, and a bathroom. The terrace enjoys excellent natural light and generous dimensions, ideal for hosting a barbecue, dining area, bar, and laundry space. The other two apartments each offer one bedroom, a

living-dining room with an integrated kitchen, and a bathroom. This unique property represents a great opportunity both for investors seeking a high-yield asset in the city centre and for those looking for a spacious, central residence with great potential and a terrace to redesign and renovate to their liking. Located in the heart of Pla del Remei, one of the city's most exclusive neighbourhoods, this apartment offers an unbeatable quality of life. The area is surrounded by all essential services, such as supermarkets, high-end shops, gourmet restaurants and cafés, all just...

Contact us,
we will be happy to assist you,
to offer you more details and information.

Pla del remei, Valencia

REF. VV2511049



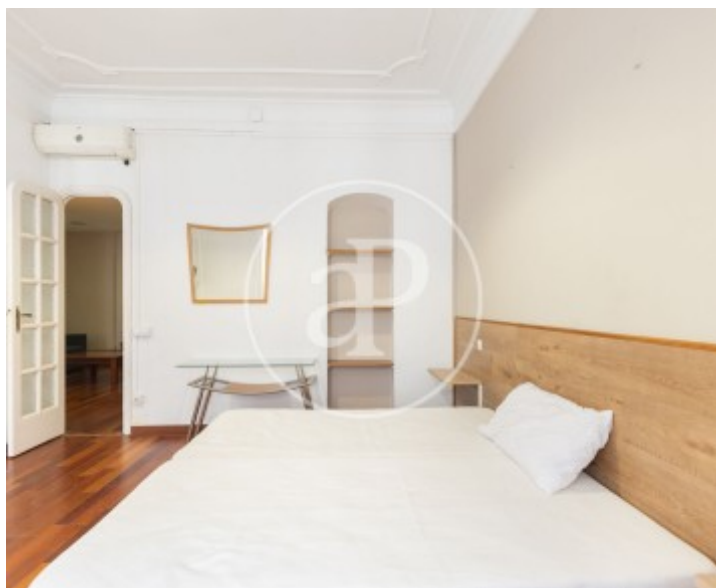
Pla del remei, Valencia

REF. VV2511049



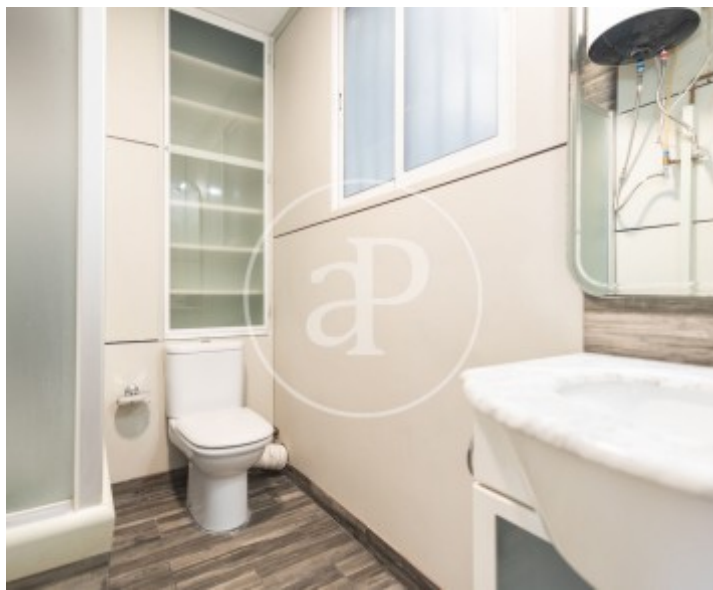
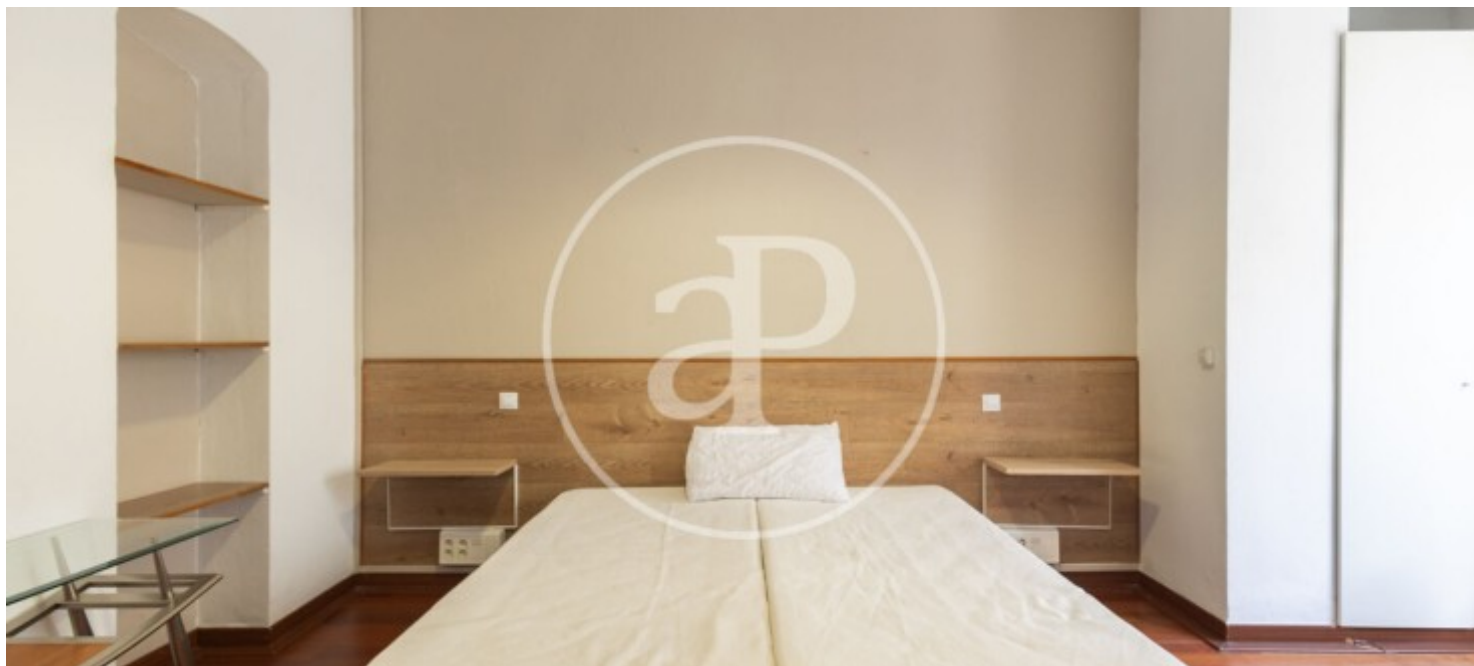
Pla del remei, Valencia

REF. VV2511049



Pla del remei, Valencia

REF. VV2511049



The information about any property is not binding to any offer or contract. Any verbal or written declaration made by aProperties with regards to the value or condition of the property should not be considered accurate or factual. The pictures make reference to some parts of the property at the times that they were taken. The areas, dimensions and distances that are given are approximate and should be checked by the client. The images are computer generated and are just an approximate indication of the real appearance of the property; these may change at any time. The information with regards to the property may also change at any time.

For **more information** or
to make an appointment

apropertiesvalencia@aproperties.es
Tel: 96 128 59 65
www.aproperties.es