



(Patraix)

Ref: ONV2601001



## *New building (work) for sale with Terrace in Patraix (Valencia)*

Verdana Building is born from the landscape that surrounds it: a park located just a few meters away, visible from the building's windows. However, the essence of Verdana is not only defined by its surroundings, but also by the qualities that shape this project. The orientation of the homes allows natural light to flood every corner, combined with a functional and well-balanced layout. Each residence in Verdana Building has been designed to feel like a haven of light, clarity, and harmony. The brightness that embraces the building, together with views of the surrounding green areas, creates a perfect balance between well-being and quality of life. Sustainability is a core principle of the project: the building holds an A energy efficiency rating and has been constructed using sustainable, environmentally respectful materials. Here, sustainability is not an option, but an essential part of every space and every detail. This philosophy is also reflected in the façade, designed in green tones that connect directly with the natural surroundings and enhance the sense of comfort and quality of life. On the rooftop, the style rises even further: an exclusive space with [...]

Valencia / Patraix

Unit 1 1

Completion Q1 2028

### **FEATURES**

Surface 69 m<sup>2</sup> / 4 m<sup>2</sup> terrace

2 Rooms

2 Toilets

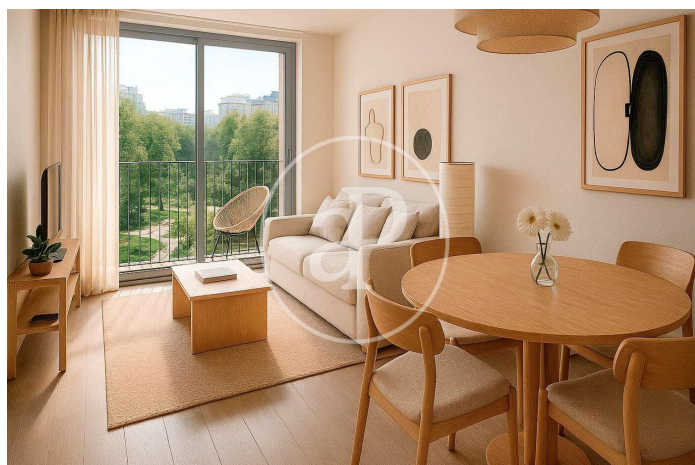
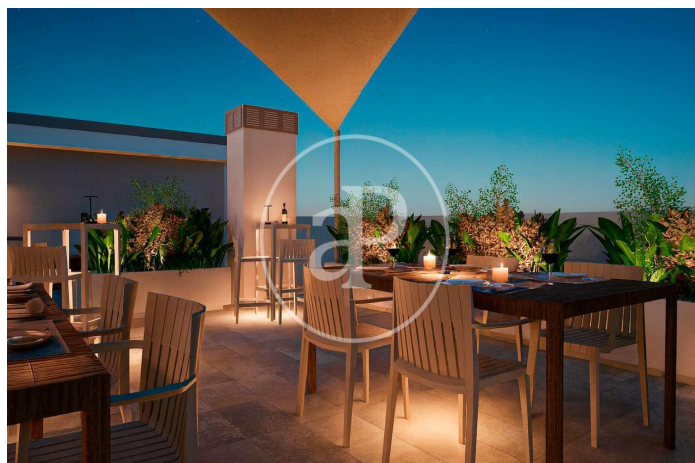
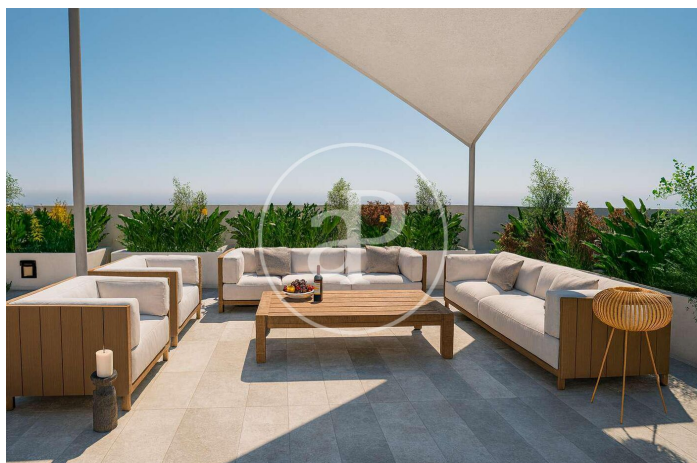
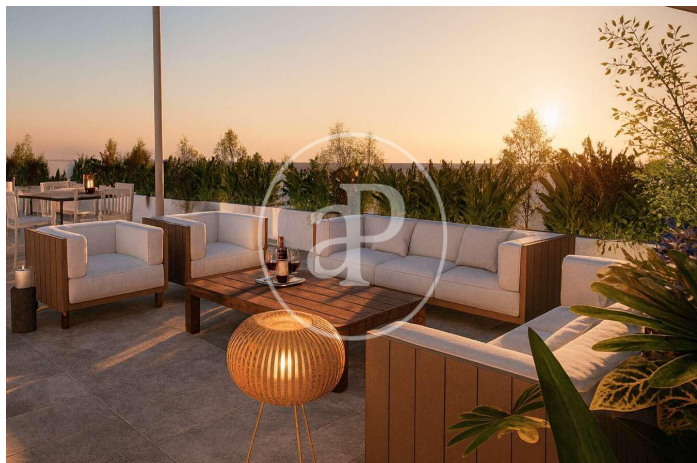
- ✓ Views
- ✓ Heating
- ✓ AACC
- ✓ Terrace
- ✓ Backyard
- ✓ Lift

Price 297,000 €



(Patraix)

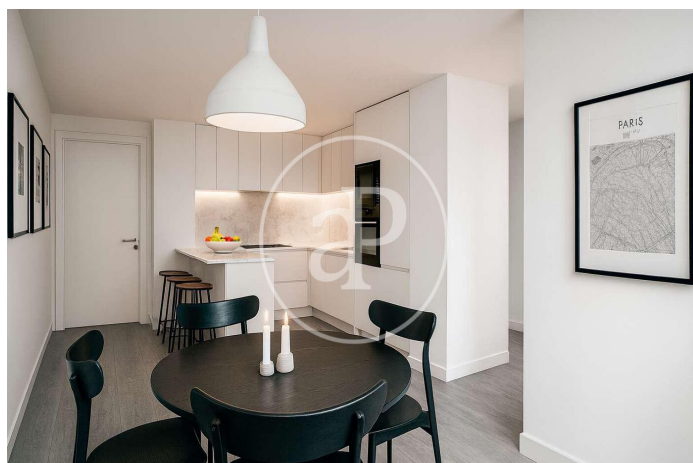
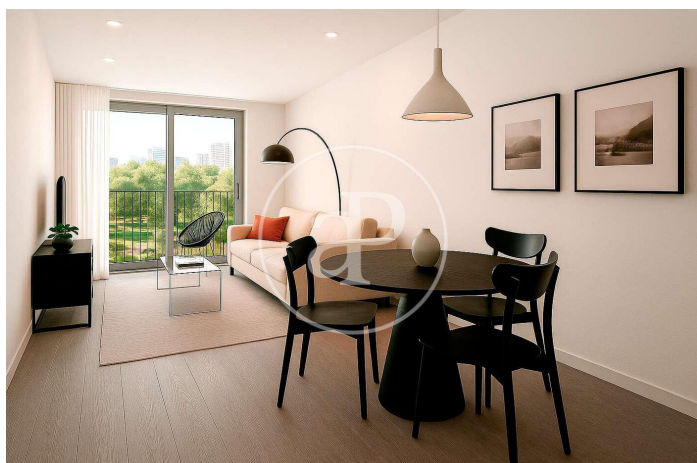
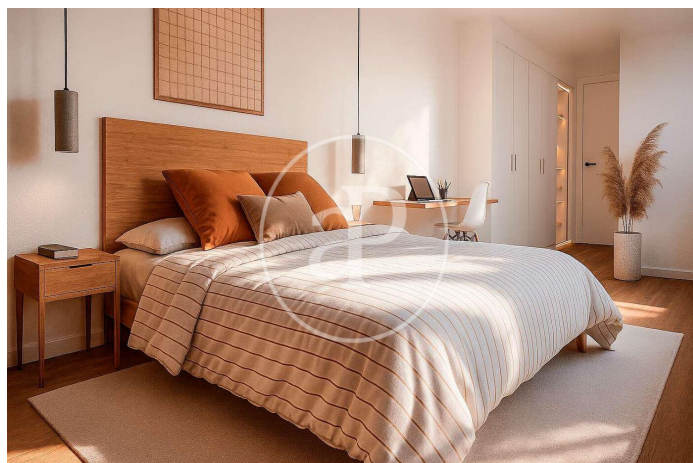
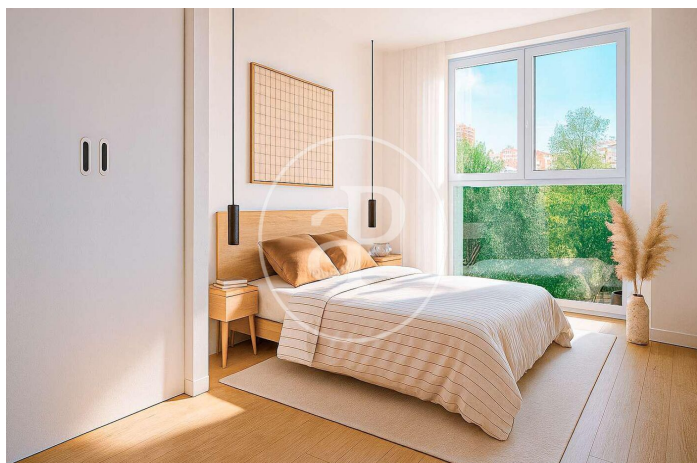
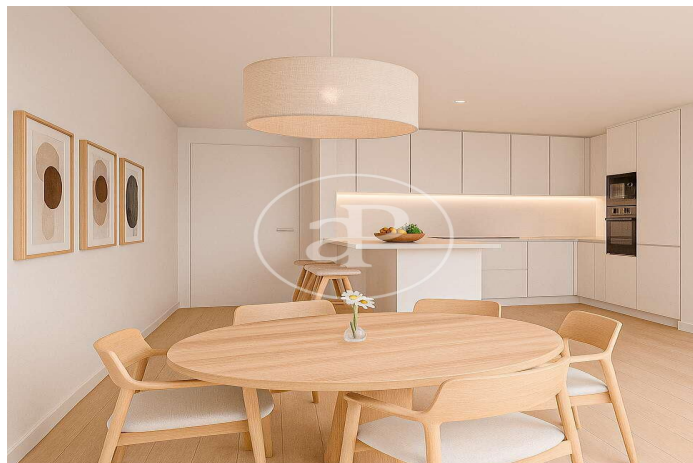
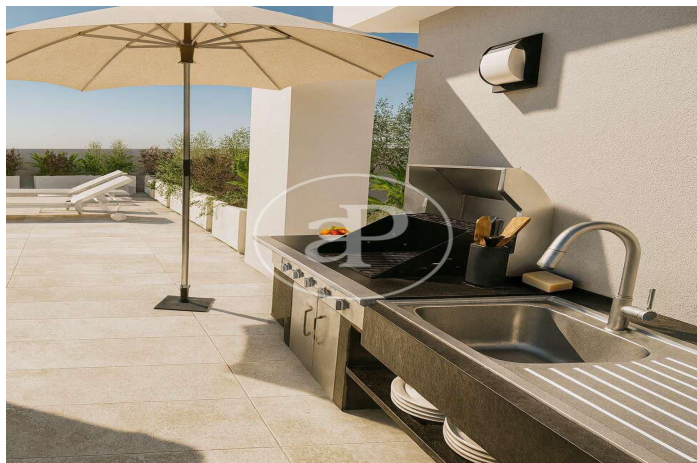
Ref: ONV2601001





(Patraix)

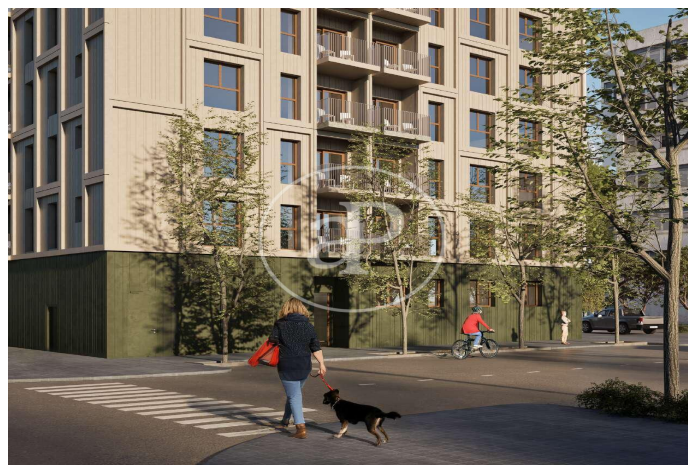
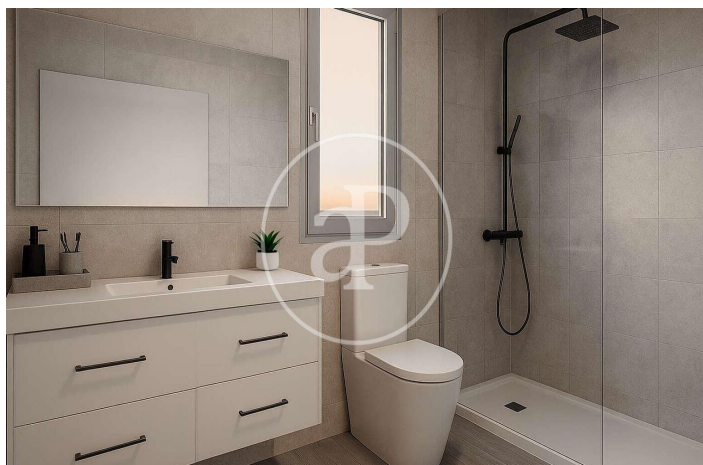
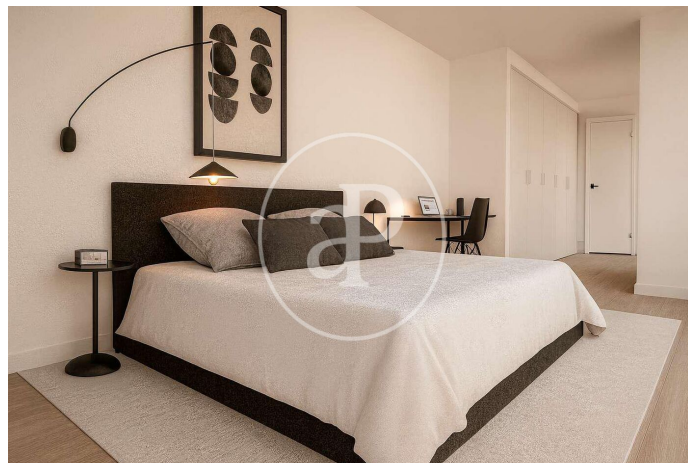
Ref: ONV2601001





(Patraix)

Ref: ONV2601001



C/ MÚSICO GOMIS



C/ MÚSICO GOMIS

The information about any property is not binding to any offer or contract. Any verbal or written declaration made by aProperties with regards to the value or condition of the property should not be considered accurate or factual. The pictures make reference to some parts of the property at the times that they were taken. The areas, dimensions and distances that are given are approximate and should be checked by the client. The images are computer generated and are just an approximate indication of the real appearance of the property; these may change at any time. The information with regards to the property may also change at any time.

Contact us today for more information or to arrange a viewing

Tel: 96 128 59 65 [apropertiesvalencia@aproperties.es](mailto:apropertiesvalencia@aproperties.es) <https://www.aproperties.es>