



Nou Moles - L'Olivereta, Valencia

REF. VV2509055

Flat for sale in Nou Moles - L'Olivereta (Valencia)

Features

Surface

145 m²

Bedrooms

3

Bathrooms

3

✓ Lift

Price

450,000 €



aProperties is pleased to present for sale a unique property with high investment potential, located in one of Valencia's most strategic areas.

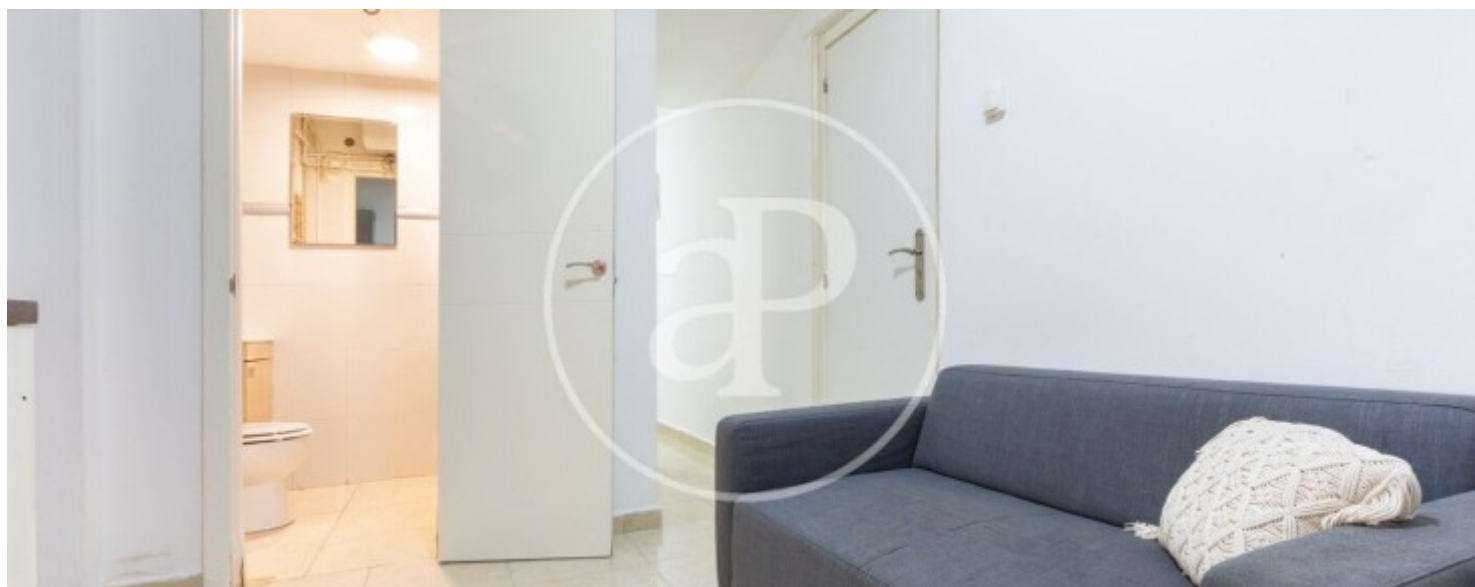
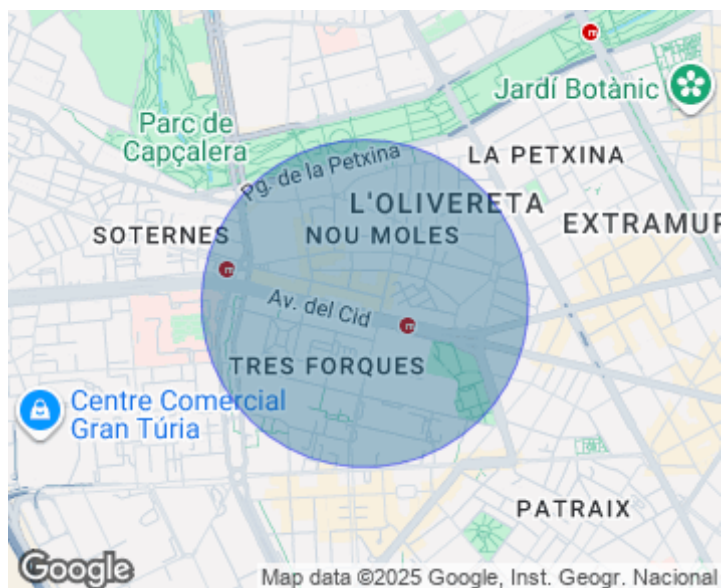
Currently divided into three fully independent suites, each with its own equipped kitchen and private bathroom, this property is an exceptional opportunity for both investors seeking guaranteed profitability and buyers looking for a versatile home adaptable to different needs and lifestyles. The property is located on Avenida del Cid, one of the city's main thoroughfares, offering direct access to Valencia's city centre and the main entry and exit routes. The area boasts excellent public transport

connections, with bus stops and a metro station just a few minutes' walk away. In the immediate surroundings, you will find universities, cultural venues, shopping areas, and all the daily services you may need. The historic centre and Valencia's main tourist attractions are just minutes away, making the location appealing for both residents and visitors. The property also offers quick access to major hospitals and healthcare centres, as well as a wide range of educational institutions, including schools and high schools. There is a great variety of supermarkets, restaurants, and shops...

Contact us,
we will be happy to assist you,
to offer you more details and information.

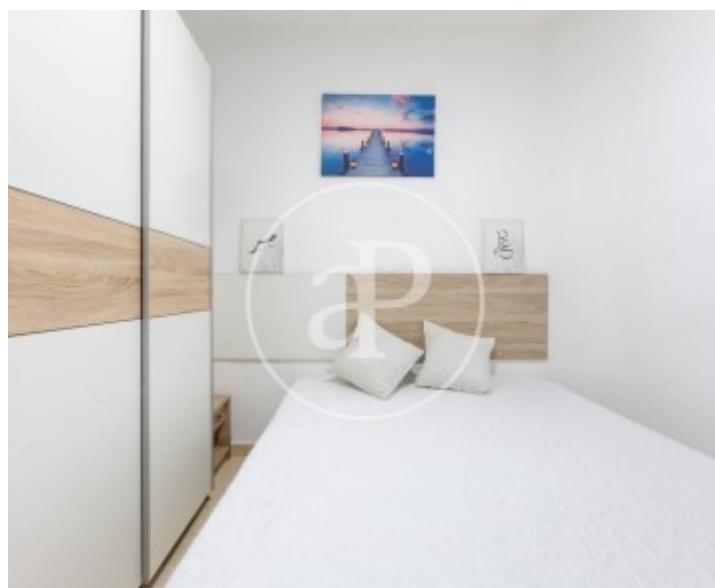
Nou Moles - L'Olivereta, Valencia

REF. VV2509055



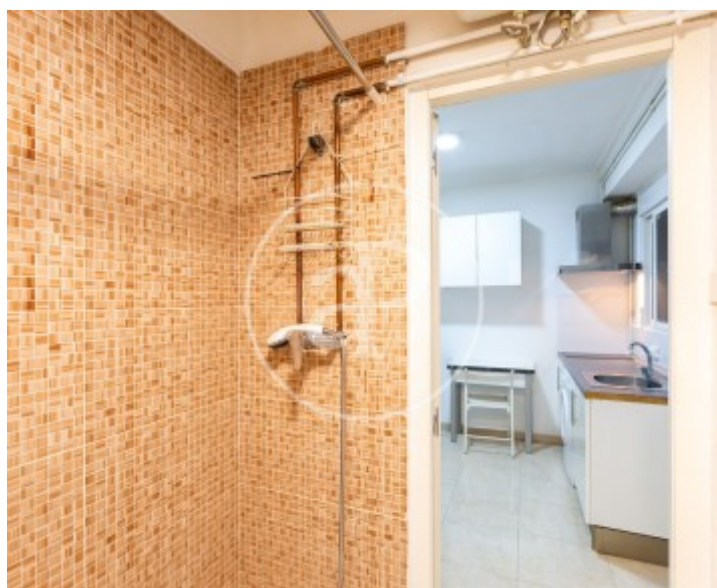
Nou Moles - L'Olivereta, Valencia

REF. VV2509055



Nou Moles - L'Olivereta, Valencia

REF. VV2509055



Nou Moles - L'Olivereta, Valencia

REF. VV2509055



The information about any property is not binding to any offer or contract. Any verbal or written declaration made by aProperties with regards to the value or condition of the property should not be considered accurate or factual. The pictures make reference to some parts of the property at the times that they were taken. The areas, dimensions and distances that are given are approximate and should be checked by the client. The images are computer generated and are just an approximate indication of the real appearance of the property; these may change at any time. The information with regards to the property may also change at any time.

For **more information** or
to make an appointment

apropertiesvalencia@aproperties.es
Tel: 96 128 59 65
www.aproperties.es