



Morvedre, Valencia

REF. AV2511049

House for rent with Terrace in Patraix (Valencia)

Features

- ✓ Heating
- ✓ AACC
- ✓ Furnished

Price
3,900 €

Surface
208 m²

Bedrooms
5

Bathrooms
2



aProperties presents this bright and welcoming home full of character, completely refurbished with top-quality materials and distributed over two floors.

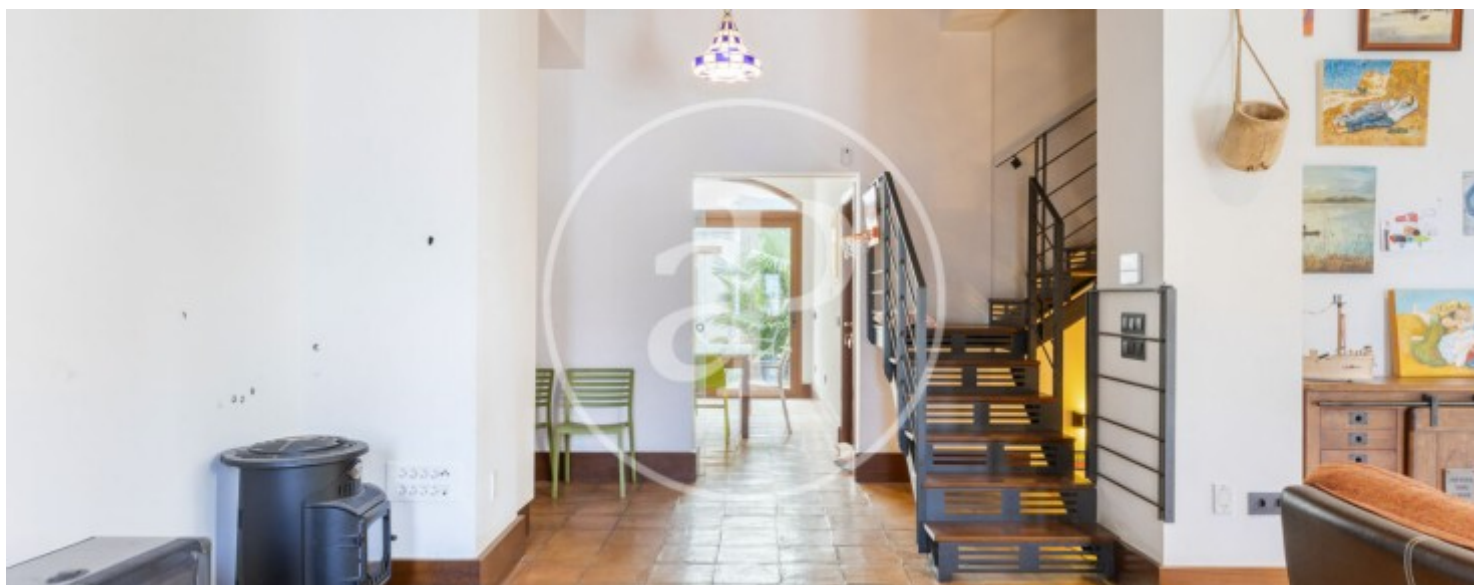
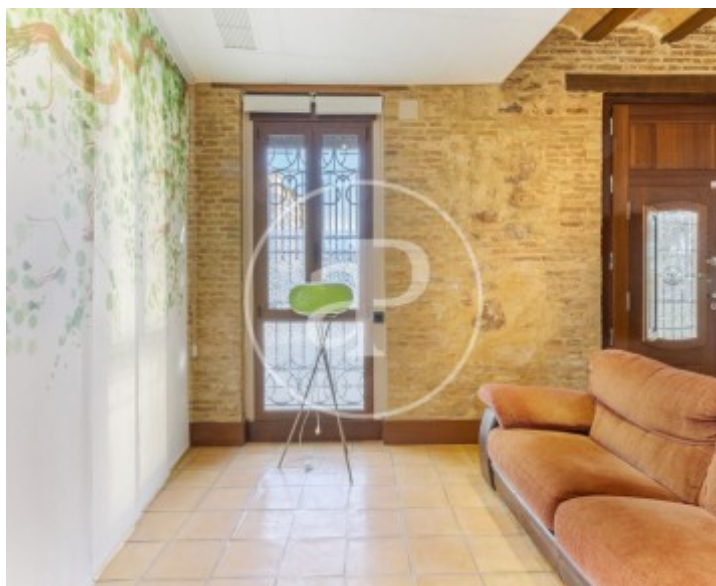
On the ground floor, you'll find a spacious living room with carefully selected décor, a fully equipped kitchen, a bedroom, and a full bathroom with a shower. Upstairs, the sleeping area offers four bedrooms and a second full bathroom, equipped with both a bathtub and a shower for greater comfort. The property stands out for its high ceilings, stone walls with unique overhead lighting, and abundant natural brightness. It also features ducted air conditioning throughout the house, ensuring comfort all

year round. As an additional space, it includes a charming 25 m² patio or interior garden — perfect for relaxing or enjoying outdoor meals right in the heart of the city. It is rented fully furnished and ready to move into, with a modern and functional décor that enhances the unique character of the home. Located in a quiet and well-connected area, next to Pont de Fusta station and just a few minutes from Valencia's city centre, it perfectly combines comfort, style, and a privileged location.

Contact us,
we will be happy to assist you,
to offer you more details and information.

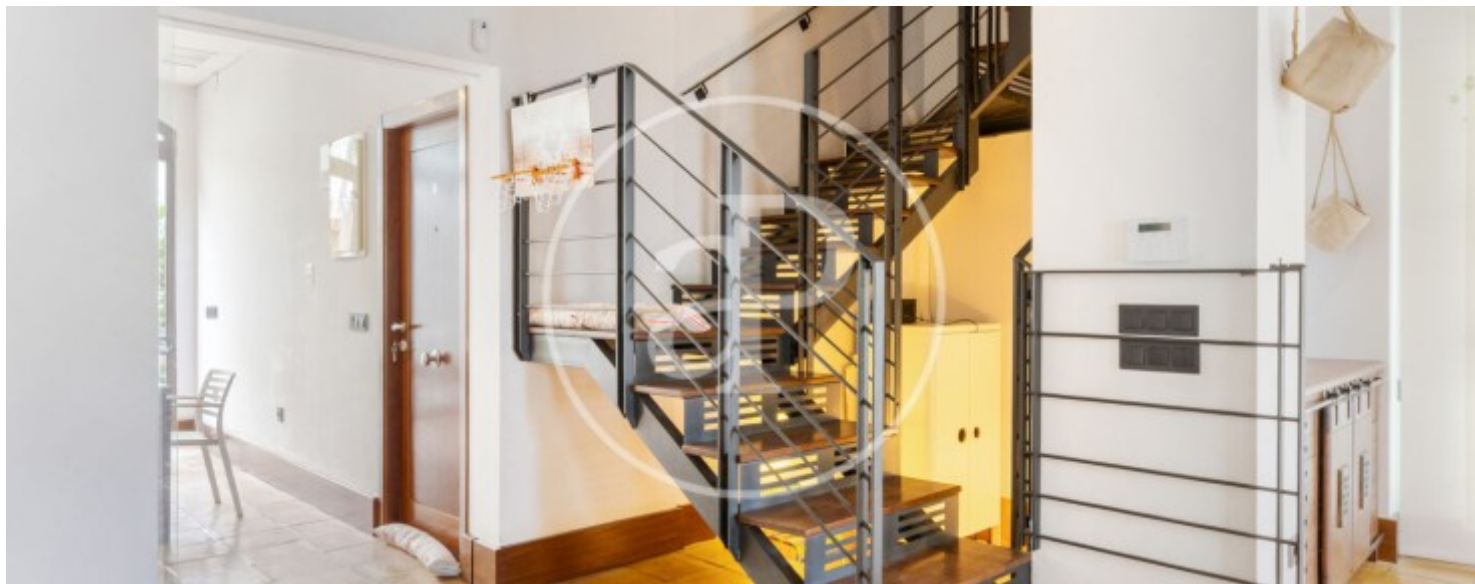
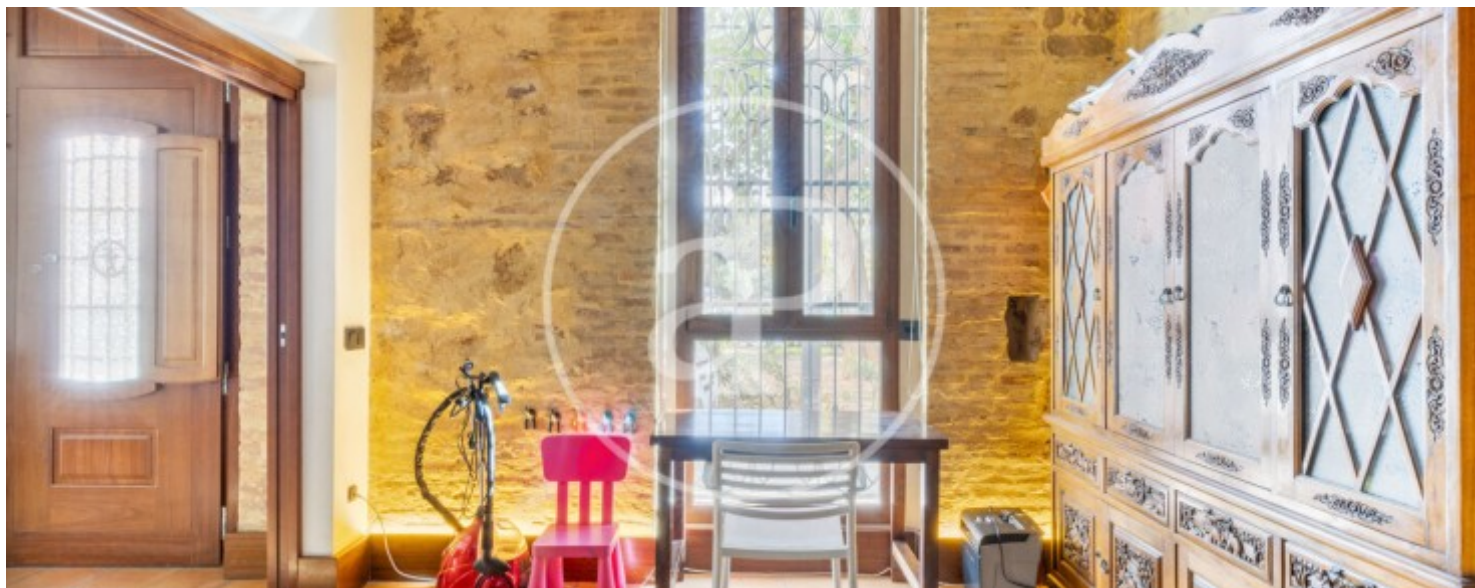
Morvedre, Valencia

REF. AV2511049



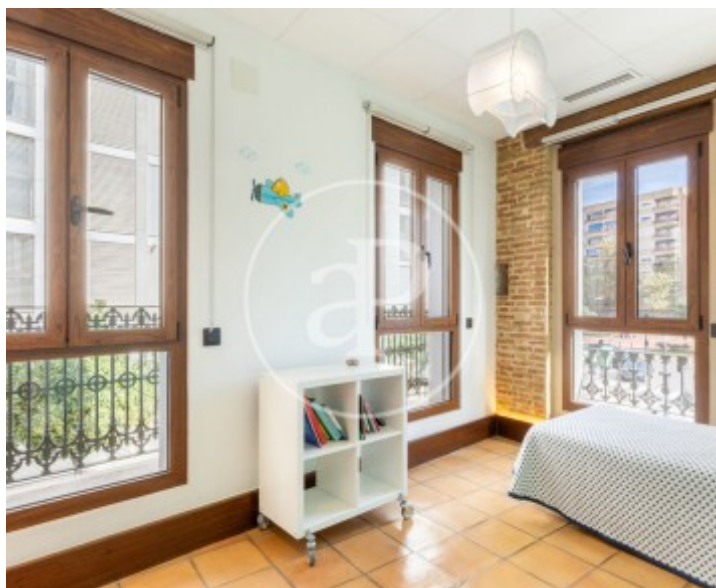
Morvedre, Valencia

REF. AV2511049



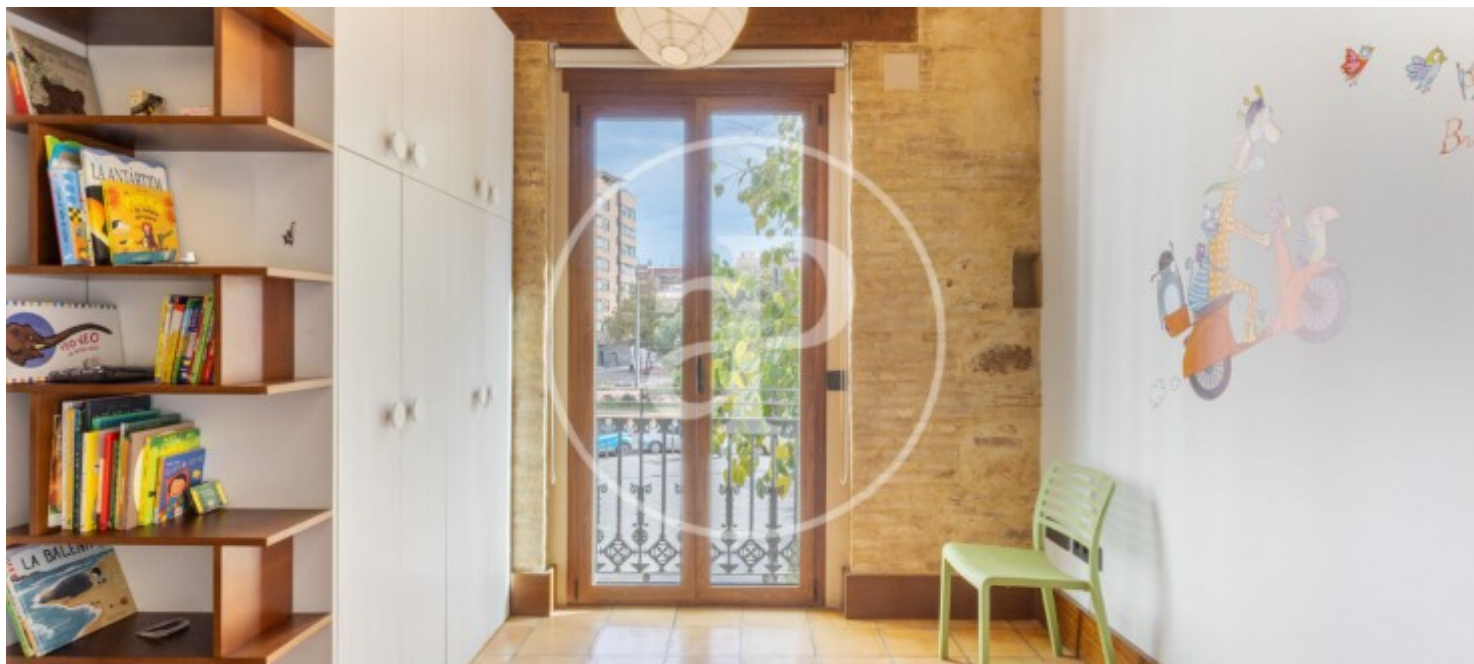
Morvedre, Valencia

REF. AV2511049



Morvedre, Valencia

REF. AV2511049



The information about any property is not binding to any offer or contract. Any verbal or written declaration made by aProperties with regards to the value or condition of the property should not be considered accurate or factual. The pictures make reference to some parts of the property at the times that they were taken. The areas, dimensions and distances that are given are approximate and should be checked by the client. The images are computer generated and are just an approximate indication of the real appearance of the property; these may change at any time. The information with regards to the property may also change at any time.

For **more information** or
to make an appointment

apropertiesvalencia@aproperties.es
Tel: 96 128 59 65
www.aproperties.es