



Morvedre, Valencia

REF. VV2602025

# Flat for sale with views in Morvedre (Valencia)

## Features

- ✓ Views
- ✓ AACC
- ✓ Has parking
- ✓ Heating
- ✓ Lift

Price

**360,000 €**

Surface

**123 m<sup>2</sup>**

Bedrooms

**2**

Bathrooms

**2**



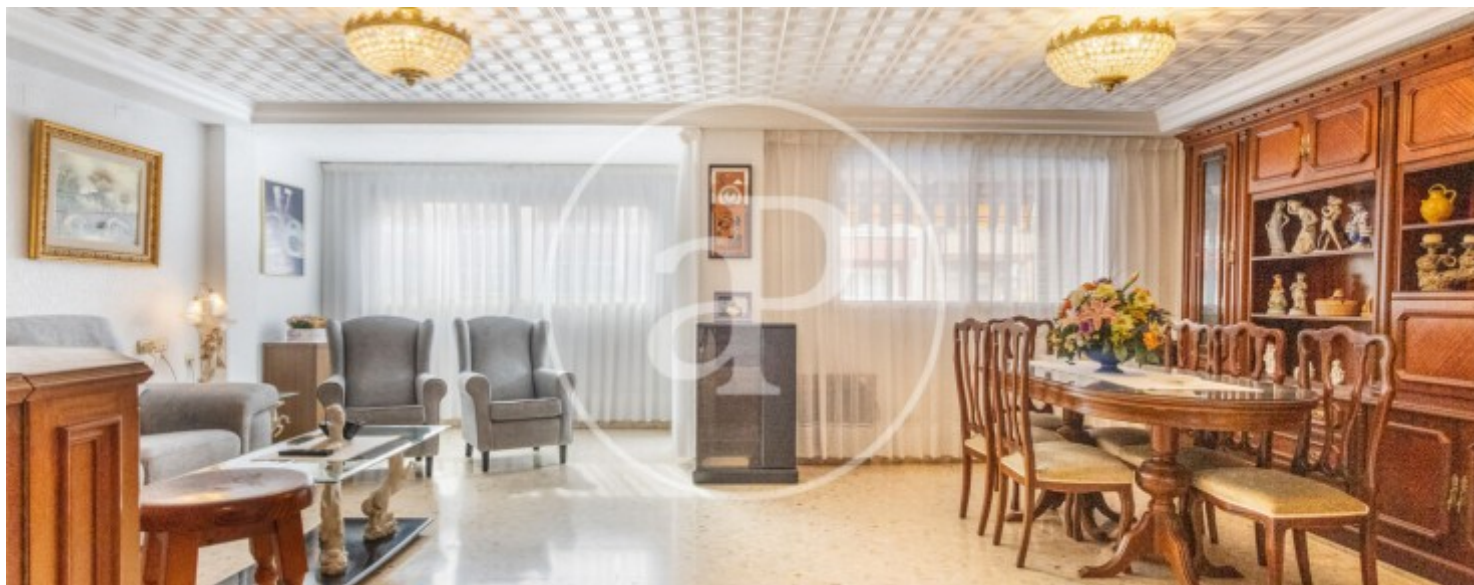
Ideal home for a couple, with or without children, located in the emblematic Zaidía neighborhood, a well-established and highly sought-after area known for its family-friendly atmosphere and excellent connections to the rest of the city. The property features a spacious and bright living-dining room with access to a terrace offering pleasant views, perfect for enjoying outdoor moments. The fully equipped kitchen provides a functional and comfortable space for everyday living. It currently has two bedrooms and one bathroom, although the property originally had three bedrooms and two bathrooms, offering interesting redistribution possibilities according to the buyer's needs. It stands out for its excellent natural light, as well as its comfort and security features, including a reinforced

front door and hot/cold air conditioning throughout the property. The property also includes a parking space, an added value that provides comfort and practicality in this location. A well-balanced, functional home with great potential, ideal for those seeking quality of life in one of the city's most characterful neighborhoods.

**Contact us,**  
we will be happy to assist you,  
to offer you more details and information.

Morvedre, Valencia

REF. VV2602025





Morvedre, Valencia

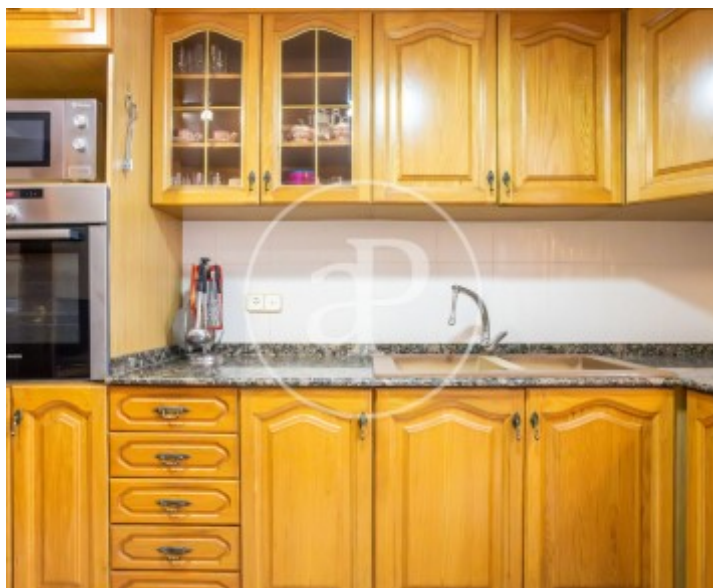
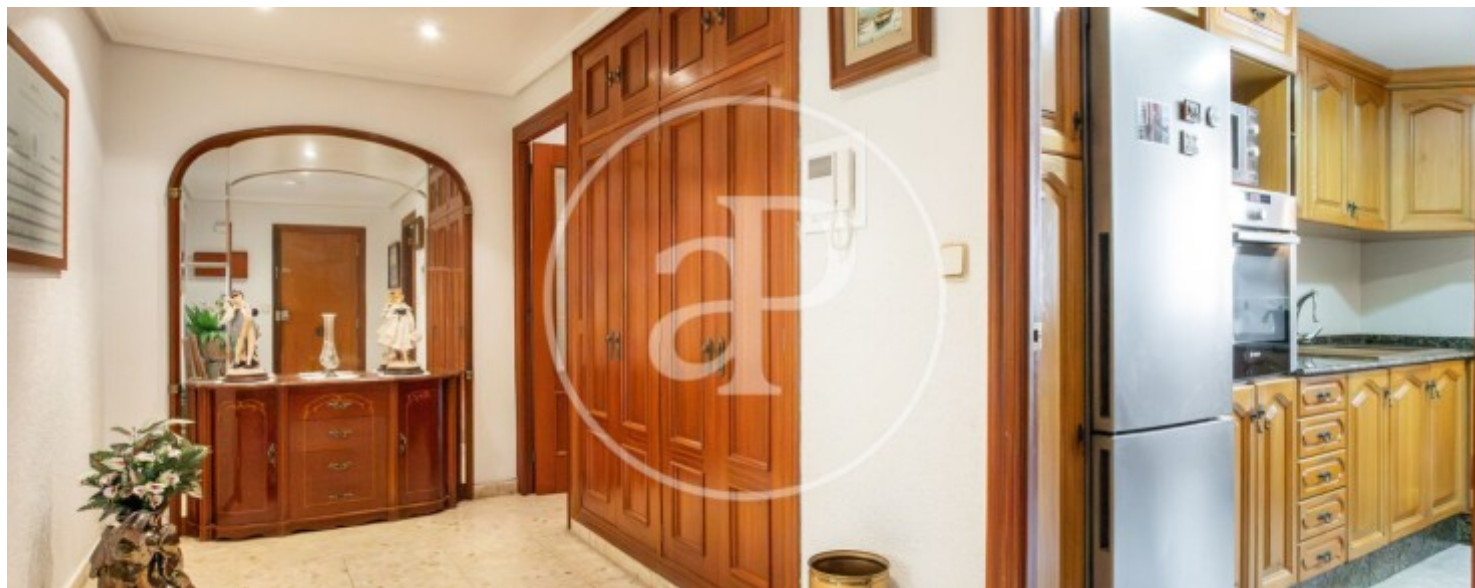
REF. VV2602025





Morvedre, Valencia

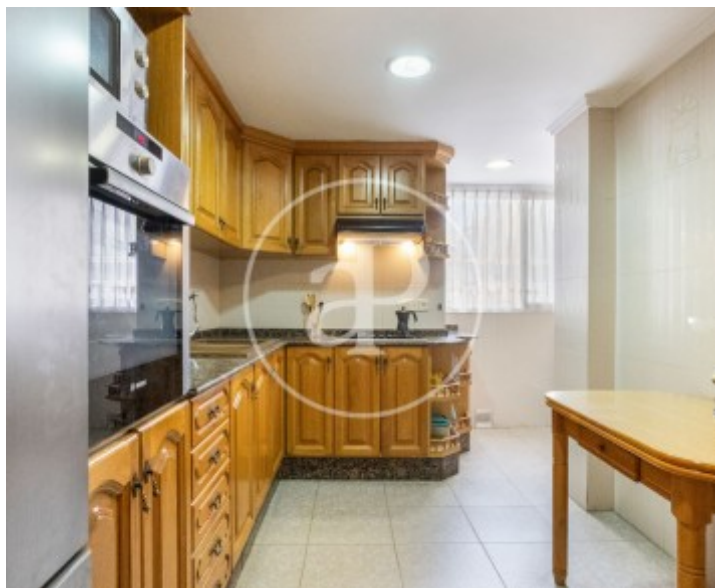
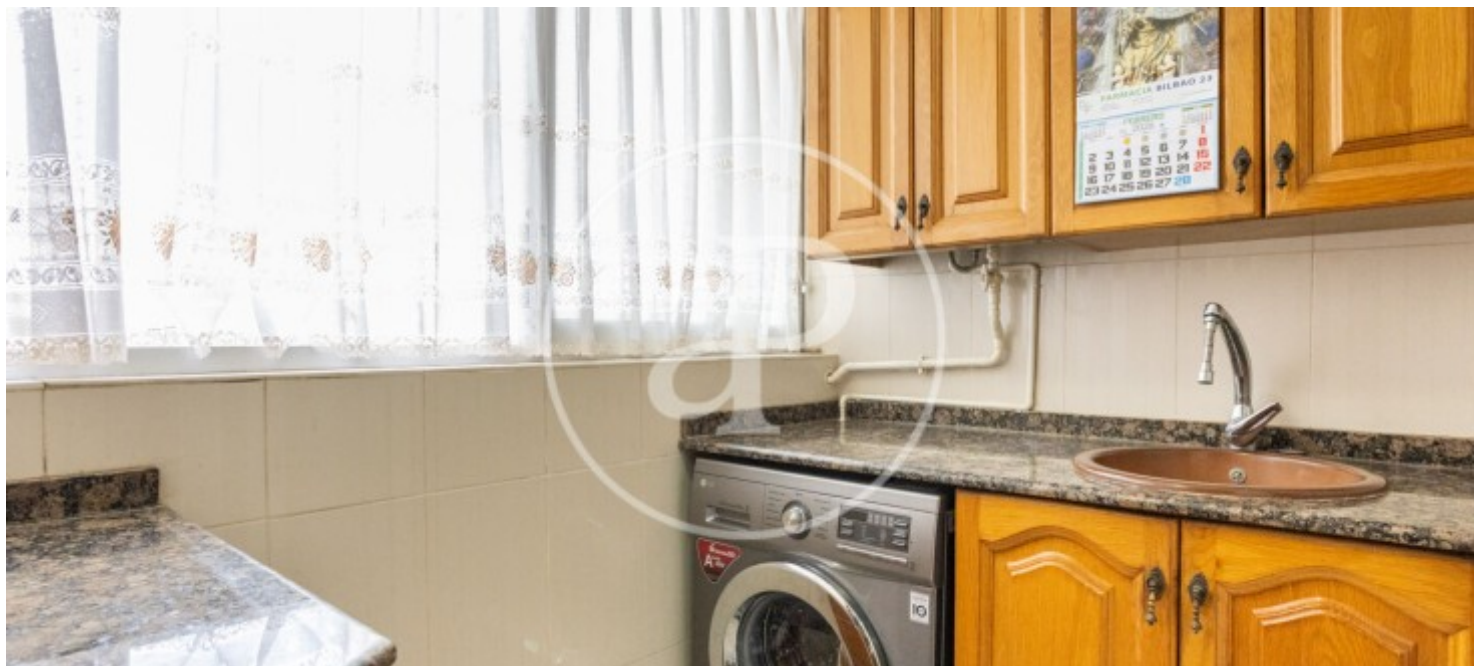
REF. VV2602025





Morvedre, Valencia

REF. VV2602025



The information about any property is not binding to any offer or contract. Any verbal or written declaration made by aProperties with regards to the value or condition of the property should not be considered accurate or factual. The pictures make reference to some parts of the property at the times that they were taken. The areas, dimensions and distances that are given are approximate and should be checked by the client. The images are computer generated and are just an approximate indication of the real appearance of the property; these may change at any time. The information with regards to the property may also change at any time.

For **more information** or  
to make an appointment

[apropertiesvalencia@aproperties.es](mailto:apropertiesvalencia@aproperties.es)  
Tel: 96 128 59 65  
[www.aproperties.es](http://www.aproperties.es)