



Mestalla, Valencia

REF. AV1907010

# Spectacular penthouse in the Alameda with luxury qualities and great views.

## Features

- ✓ Views
- ✓ AACC
- ✓ Lift
- ✓ Furnished
- ✓ Terrace
- ✓ Concierge

Price

**1,400 €**

Surface

**175 m<sup>2</sup>**

Bedrooms

**4**

Bathrooms

**2**



**In the area of the Alameda, and one of the most important and demanded roads in Valencia, we find this spectacular penthouse with four bedrooms and two bathrooms.**

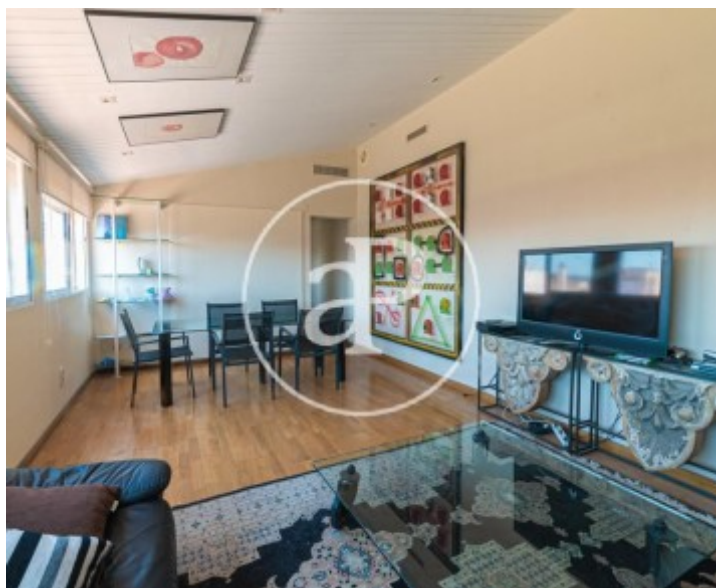
We highlight the qualities of this property, which are evident as soon as we cross the threshold of the door: the natural parquet flooring, the interior carpentry lacquered in white, as well as the coatings of its bathrooms and its large kitchen. As for comfort, it is reinforced by its air conditioning ducts throughout the house, as well as the wardrobes in rooms and corridors. Being a penthouse, we can not forget its large terrace that can be considered the dominant space of this magnificent home. Located

in a fully consolidated neighborhood, it has services of all types: schools, shops, public transport, and without forgetting its proximity to Jardines de Viveros, Monforte and Jardín del Turia. If you want to visit this penthouse, do not hesitate to contact us.

**Contact us,**  
we will be happy to assist you,  
to offer you more details and information.

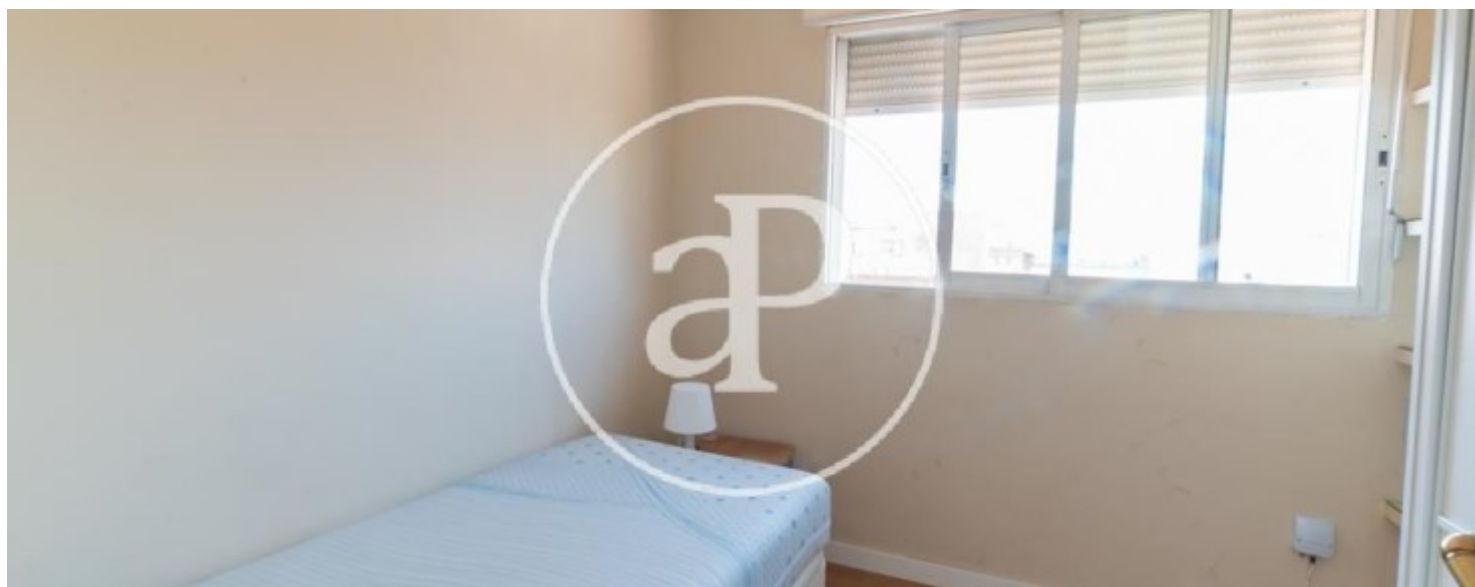
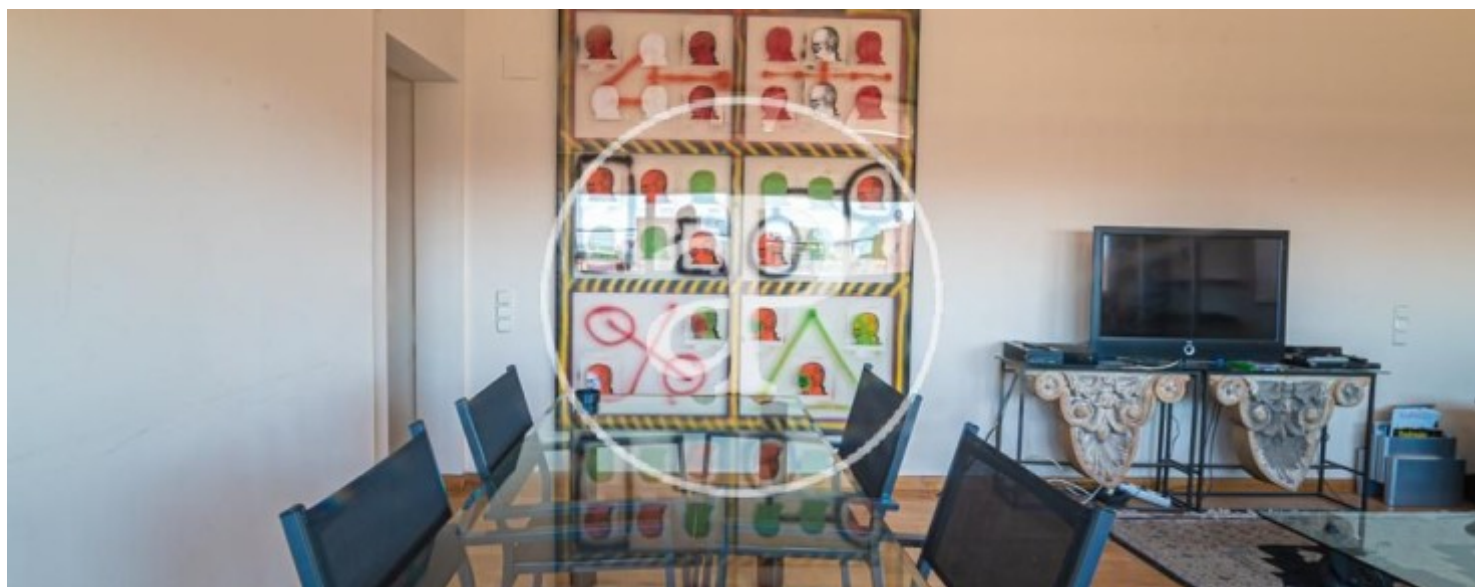
Mestalla, Valencia

REF. AV1907010



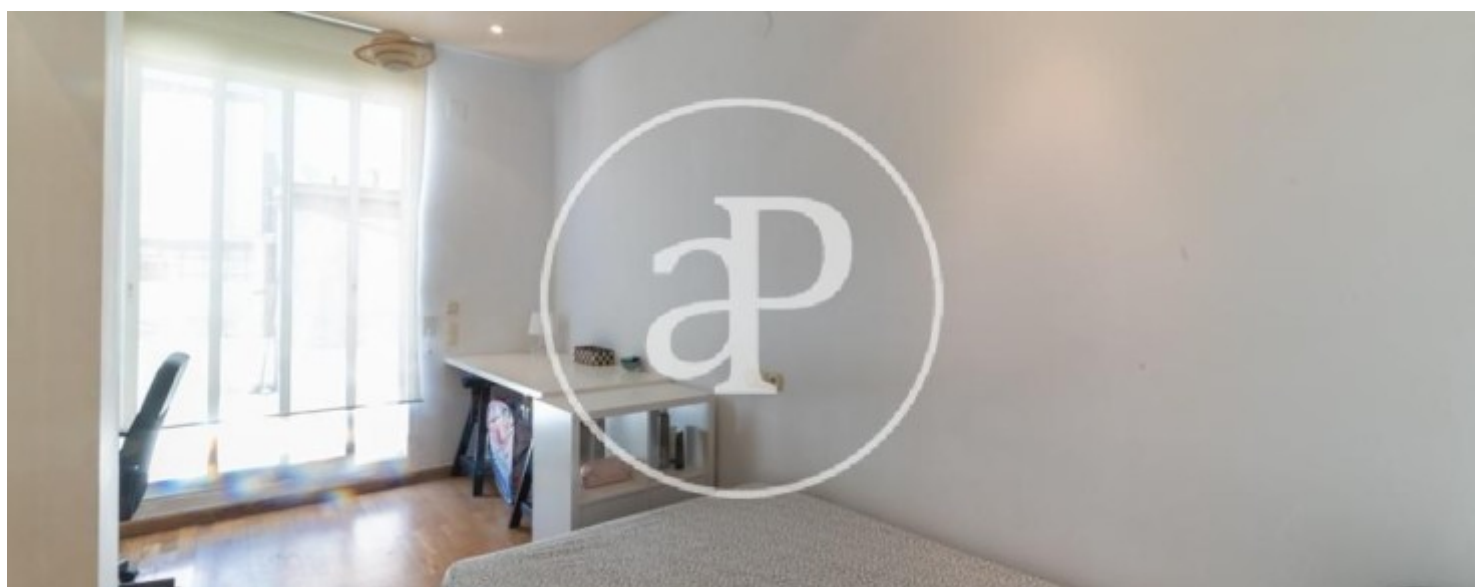
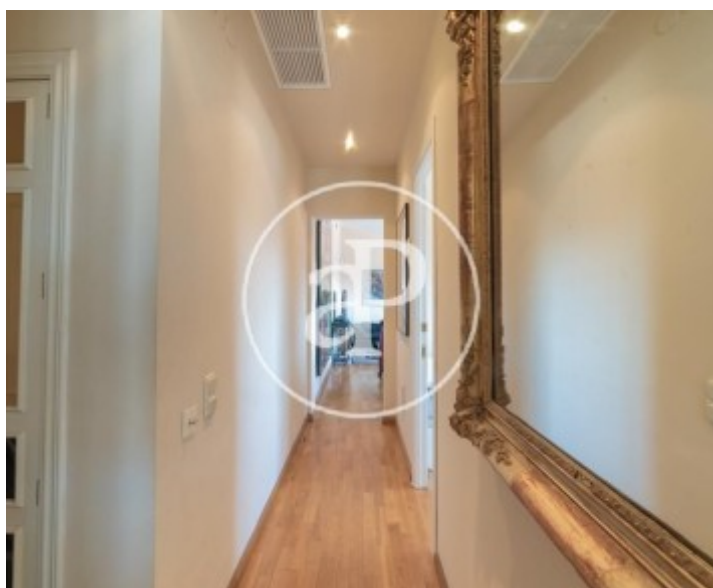
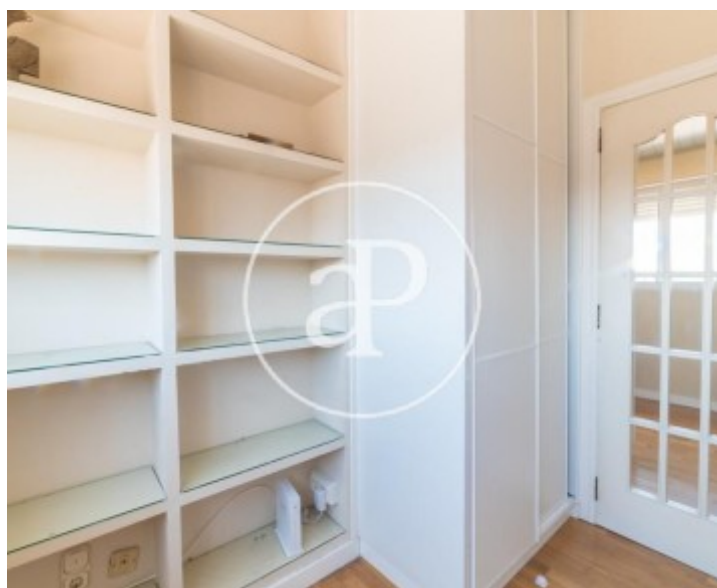
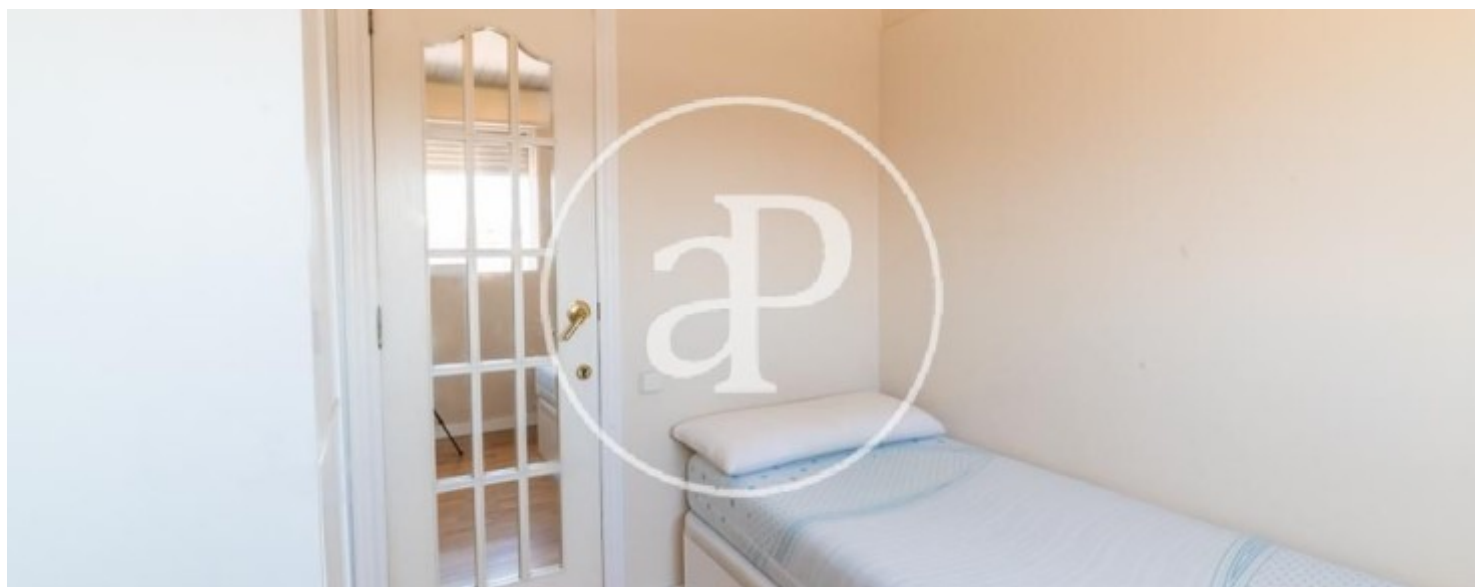
Mestalla, Valencia

REF. AV1907010



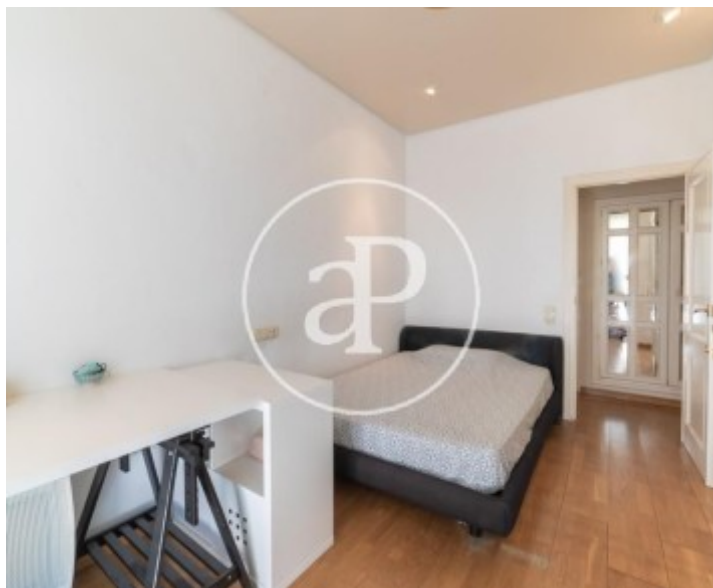
Mestalla, Valencia

REF. AV1907010



Mestalla, Valencia

REF. AV1907010



The information about any property is not binding to any offer or contract. Any verbal or written declaration made by aProperties with regards to the value or condition of the property should not be considered accurate or factual. The pictures make reference to some parts of the property at the times that they were taken. The areas, dimensions and distances that are given are approximate and should be checked by the client. The images are computer generated and are just an approximate indication of the real appearance of the property; these may change at any time. The information with regards to the property may also change at any time.

For **more information** or  
to make an appointment

[apropertiesvalencia@aproperties.es](mailto:apropertiesvalencia@aproperties.es)  
Tel: 96 128 59 65  
[www.aproperties.es](http://www.aproperties.es)