

Mestalla, Valencia

REF. VV2604027

Flat for sale with Terrace in Mestalla (Valencia)

Features

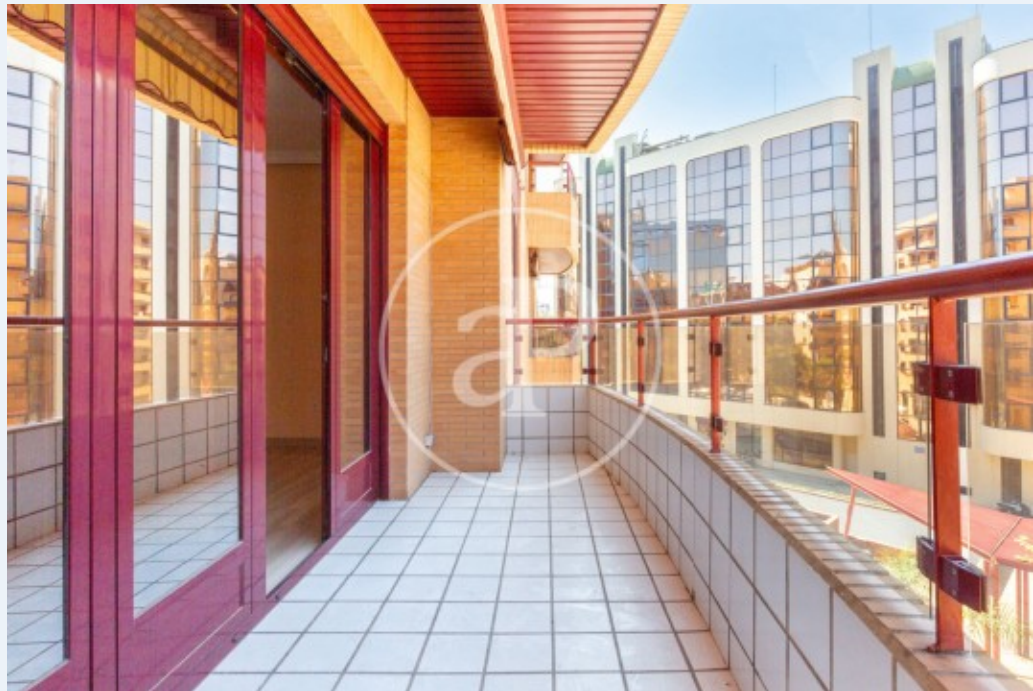
- ✓ Heating
- ✓ Terrace
- ✓ Has parking
- ✓ AACC
- ✓ Lift

Price
850,000 €

Surface
174 m²

Bedrooms
4

Bathrooms
2



aProperties presents this fully exterior property, located next to the Palau de la Música in Valencia, on Paseo de la Alameda.

Upon entering the property, we find a spacious entrance hall with a coat closet and a second closet for meters and household equipment. The property has 174 sqm (built area) and features four bedrooms, one of them en suite, designed as a private and comfortable space. The remaining bedrooms offer great versatility and can be used as additional bedrooms, an office, or a guest area. There is also a second bathroom with a bathtub serving the rest of the rooms, a separate kitchen with dining area and an exterior utility gallery, and a

bright living-dining room of approximately 35 sqm with access to a terrace of about 7 sqm, with space for outdoor furniture. This property boasts high-quality finishes, including aluminum windows with double glazing (Climalit type), walnut interior carpentry, well-maintained marble-style ceramic flooring, ducted hot/cold air conditioning, natural gas radiators, a motorized blind in the living room, security door, video intercom, and TV connections in all rooms. The price includes a spacious parking space located on the first basement level. An ideal home for those seeking to live in a quiet...

Contact us,
we will be happy to assist you,
to offer you more details and information.

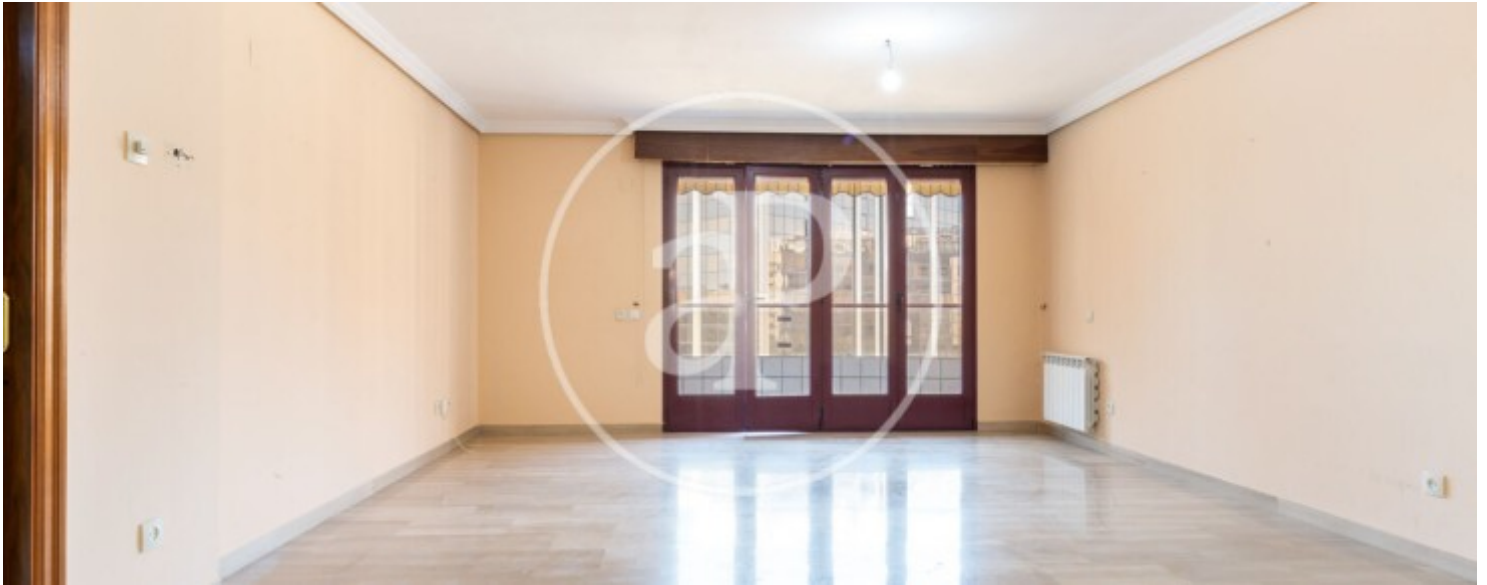
Mestalla, Valencia

REF. VV2604027



Mestalla, Valencia

REF. VV2604027



Mestalla, Valencia

REF. VV2604027



Mestalla, Valencia

REF. VV2604027



The information about any property is not binding to any offer or contract. Any verbal or written declaration made by aProperties with regards to the value or condition of the property should not be considered accurate or factual. The pictures make reference to some parts of the property at the times that they were taken. The areas, dimensions and distances that are given are approximate and should be checked by the client. The images are computer generated and are just an approximate indication of the real appearance of the property; these may change at any time. The information with regards to the property may also change at any time.

For **more information** or
to make an appointment

apropertiesvalencia@aproperties.es
Tel: 96 128 59 65
www.aproperties.es