



La Xerea, Valencia

REF. AV2511058

2 bedroom apartment near the Plaza del Patriarca

Features

Surface

70 m²

Bedrooms

2

Bathroom

1

✓ Furnished

✓ AACC

Price

1,400 €



Cozy 2 bedroom apartment fully furnished, to move into in September.

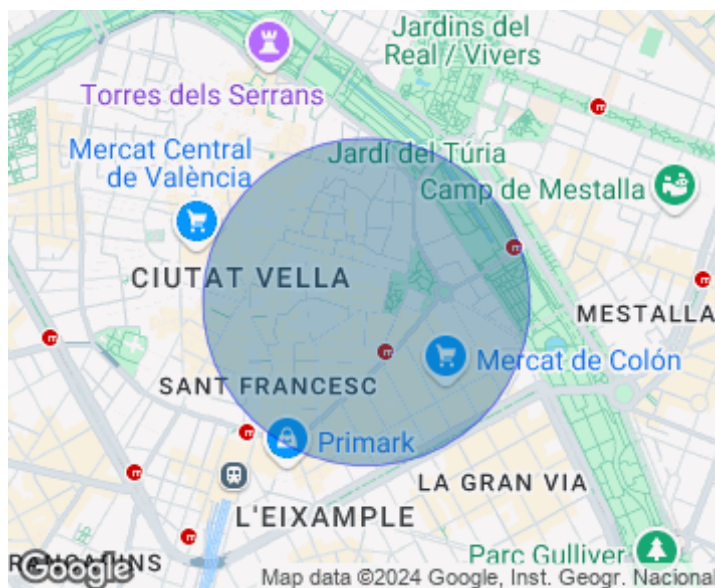
Located in one of the most sought after places to live in Valencia is this original and bright 70 m2 apartment. The property has 2 bedrooms and a bathroom, a fully equipped integrated kitchen and a spacious living room with access to a comfortable balcony. Its environments in total combination and very bright, will make you enjoy every day with your family or friends. The house is located on a second exterior floor without an elevator, and has its parquet floor and double glazed windows that perfectly isolate from the outside temperature and noise. This practical property is ideal for its location

because it is located a few minutes walk from the NORTE train station, XÀTIVA and COLÓN metro stations, EMT bus stops, schools, supermarkets and pharmacies and the new and fabulous Park Central. In addition, very close to the Ruzafa Market, one of the most traditional markets in València and a short walk from the city center. In the area you can find theaters, restaurants and art galleries. Call and request more information. 2 Months Deposit are required by the owner. Community fees and IBI are included. Contact us, we will be happy to assist you.

Contact us,
we will be happy to assist you,
to offer you more details and information.

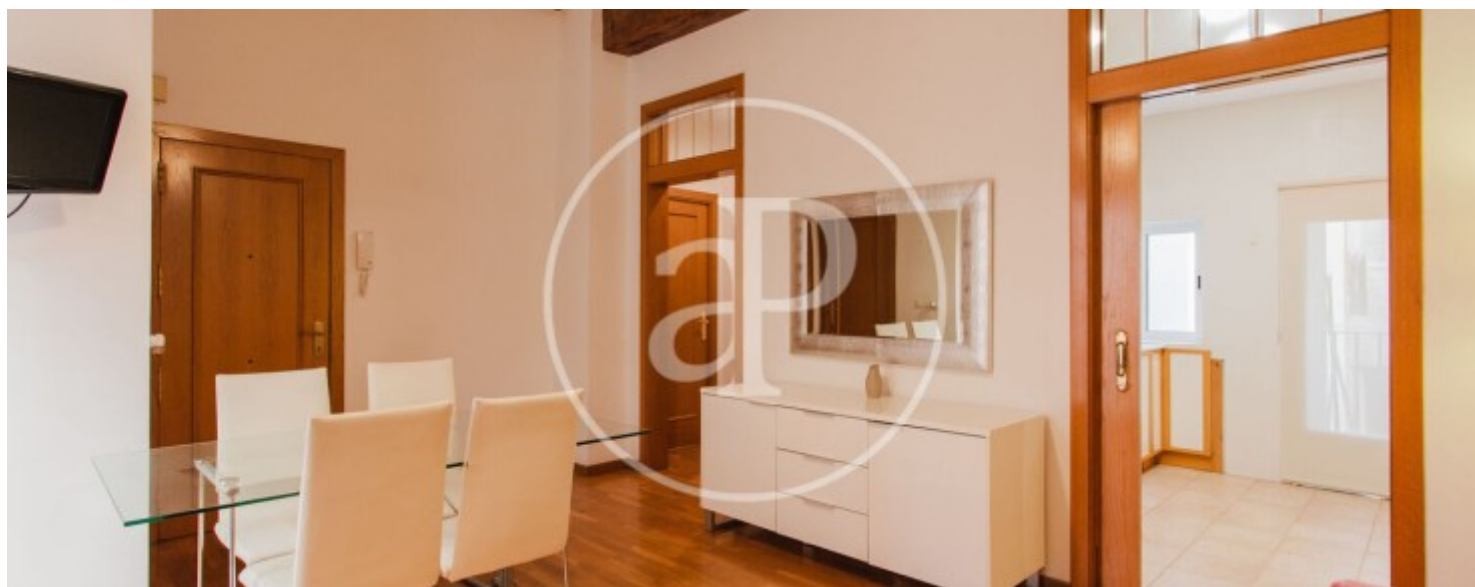
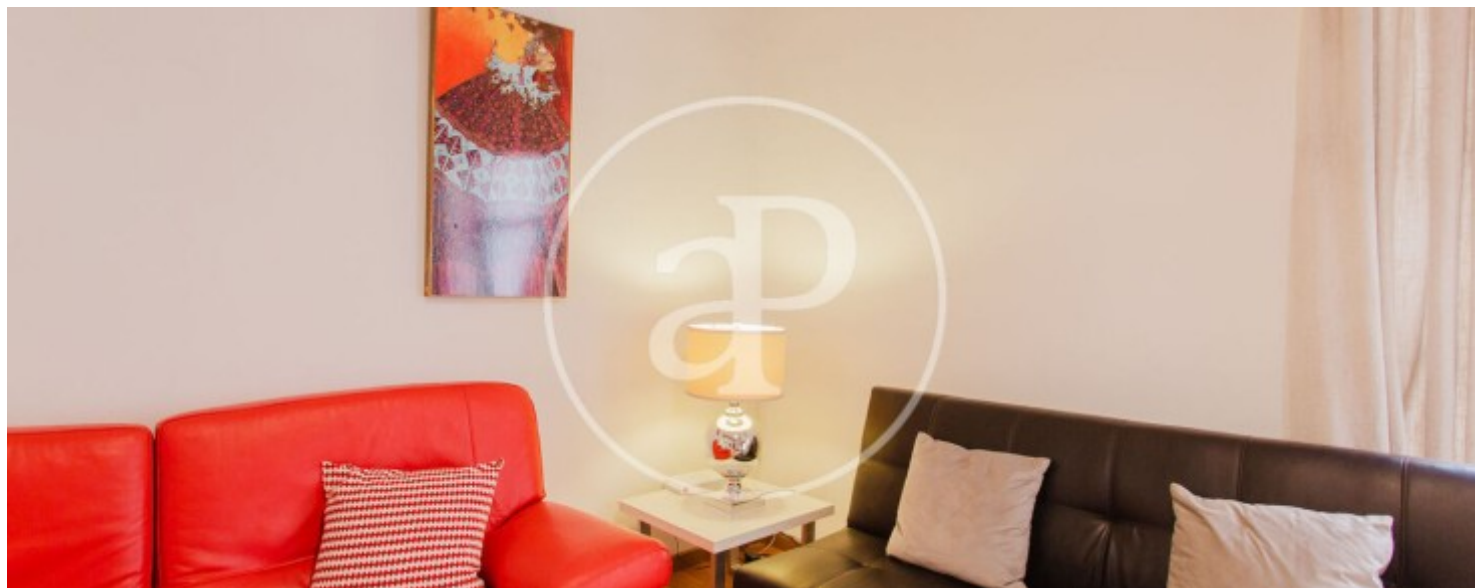
La Xerea, Valencia

REF. AV2511058



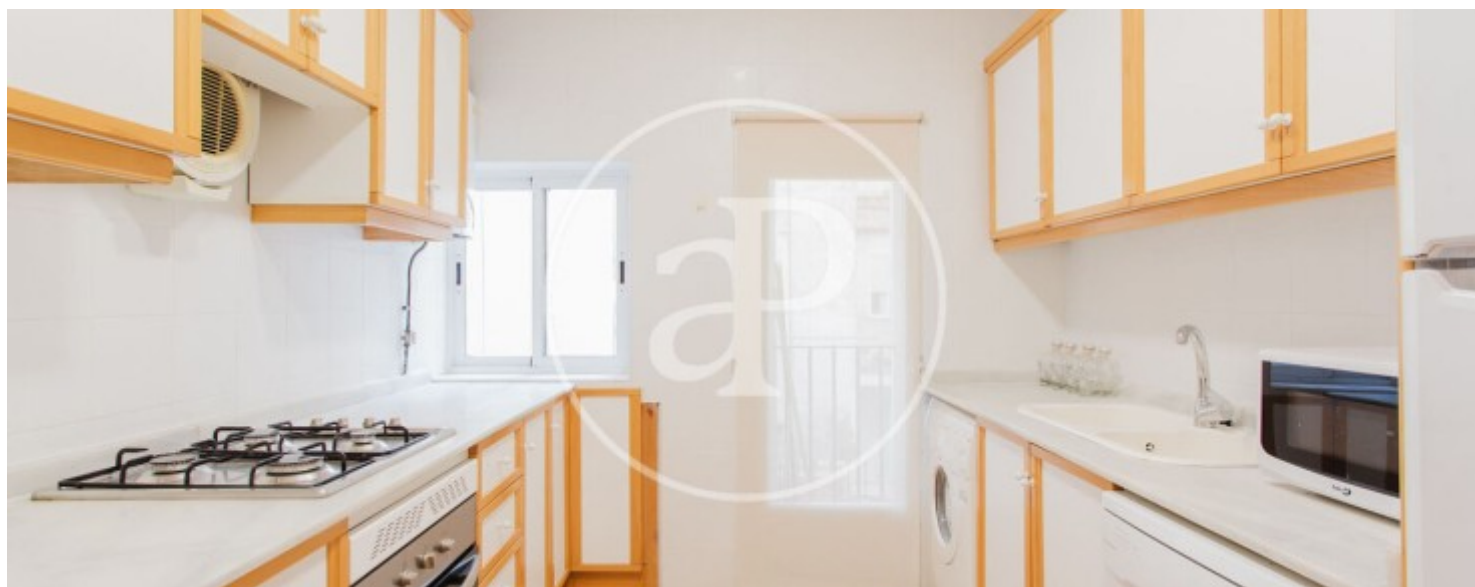
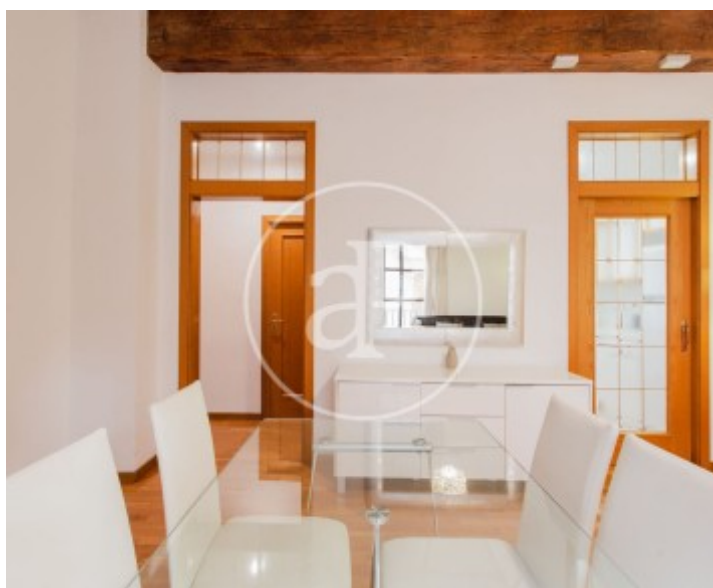
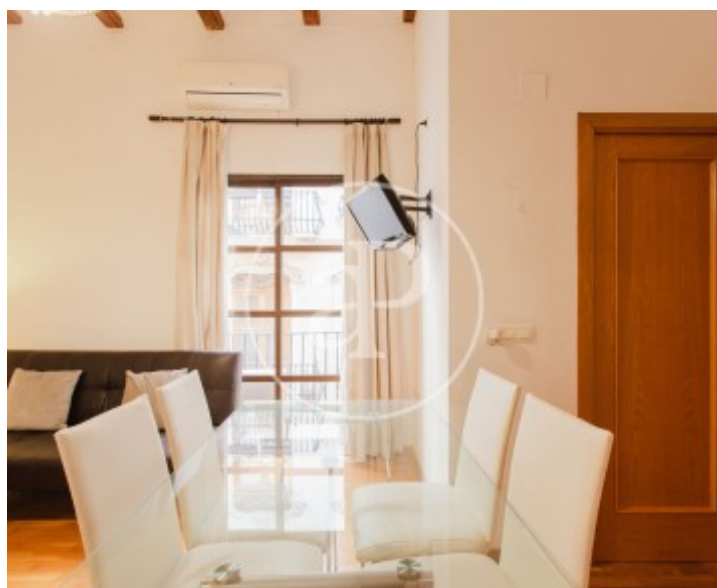
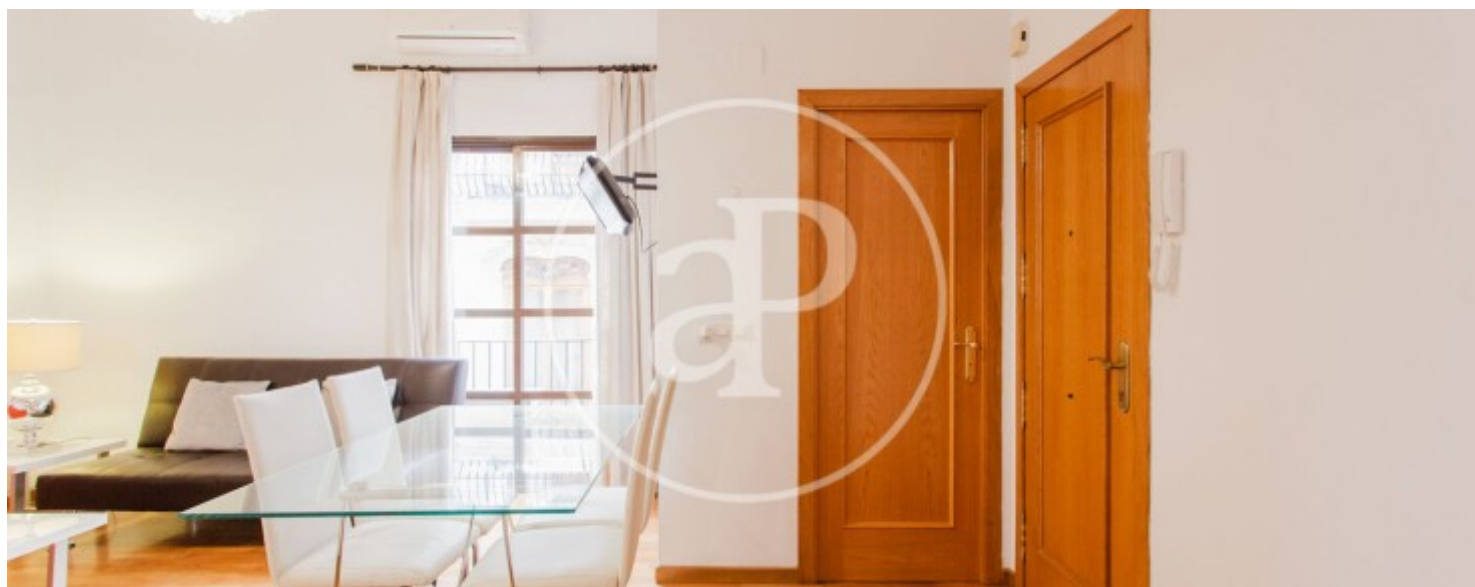
La Xerea, Valencia

REF. AV2511058



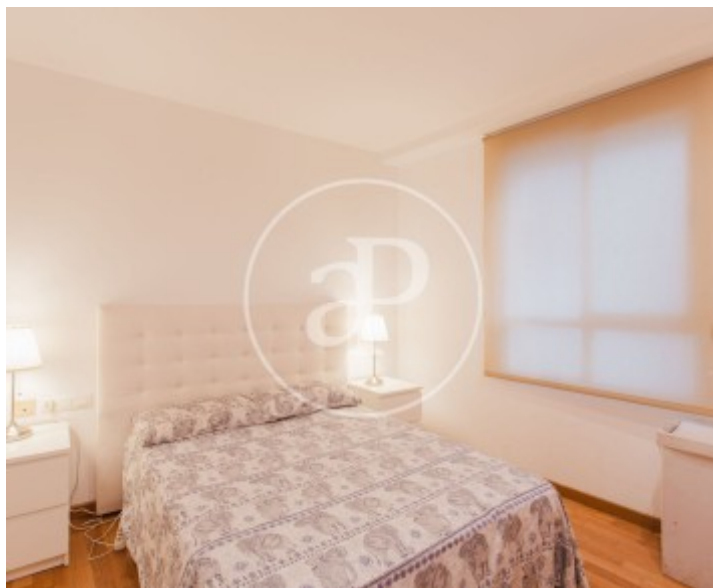
La Xerea, Valencia

REF. AV2511058



La Xerea, Valencia

REF. AV2511058



The information about any property is not binding to any offer or contract. Any verbal or written declaration made by aProperties with regards to the value or condition of the property should not be considered accurate or factual. The pictures make reference to some parts of the property at the times that they were taken. The areas, dimensions and distances that are given are approximate and should be checked by the client. The images are computer generated and are just an approximate indication of the real appearance of the property; these may change at any time. The information with regards to the property may also change at any time.

For **more information** or
to make an appointment

apropertiesvalencia@aproperties.es
Tel: 96 128 59 65
www.aproperties.es