

La Xerea, Valencia

REF. VV2207062



## Amazing duplex penthouse in privileged location

### Features

- ✓ Views
- ✓ Heating
- ✓ AACC
- ✓ Terrace
- ✓ Lift
- ✓ Has parking

Price

**1,390,000 €**

Surface

**215 m<sup>2</sup>**

Bedrooms

**3**

Bathrooms

**3**



**In the nerve center of Valencia, very close to the Garden of Túrria and Calle de la Paz, we have this impressive duplex of 215 m<sup>2</sup> with a terrace without equal of 70 m<sup>2</sup>, perfectly equipped.**

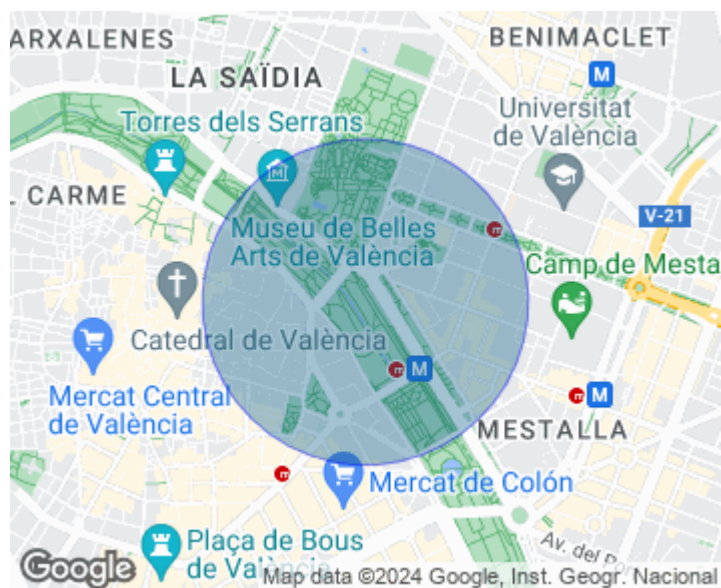
Located in a building of recent construction, it has two access doors on the main floor, as well as a living-dining room, a modern kitchen and a guest toilet, as well as access to the wonderful terrace, equipped with drip irrigation. Then we go to the upper floor, where three rooms await us, highlighting the main one, as it has an en suite bathroom and dressing room. The third bathroom is characterized by having a skylight that gives it a special charm. The property is

furnished with great taste, having several elements designed by famous designers and architects of the nineteenth and twentieth centuries, among which Gerrit Rietveld, Charles Rennie Mackintosh, Eileen Gray and Charles Eames. It has a large garage and its situation is unbeatable: just minutes from several emblematic gardens and areas of marked historical character.

**Contact us,**  
we will be happy to assist you,  
to offer you more details and information.

La Xerea, Valencia

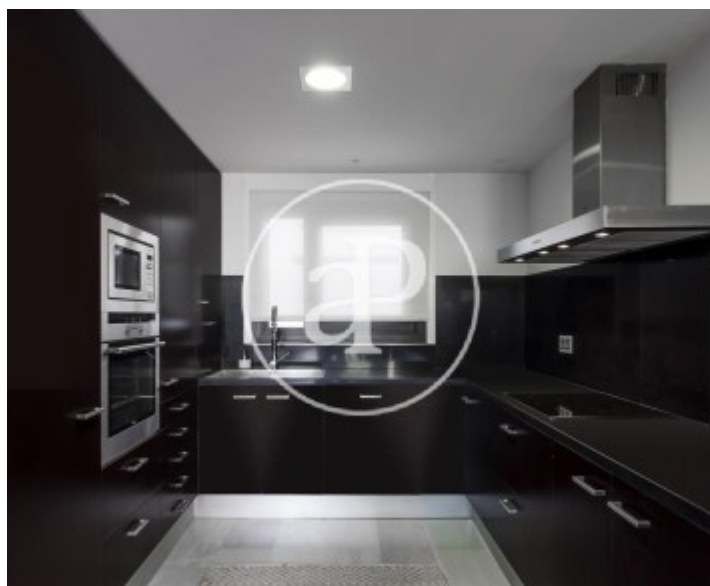
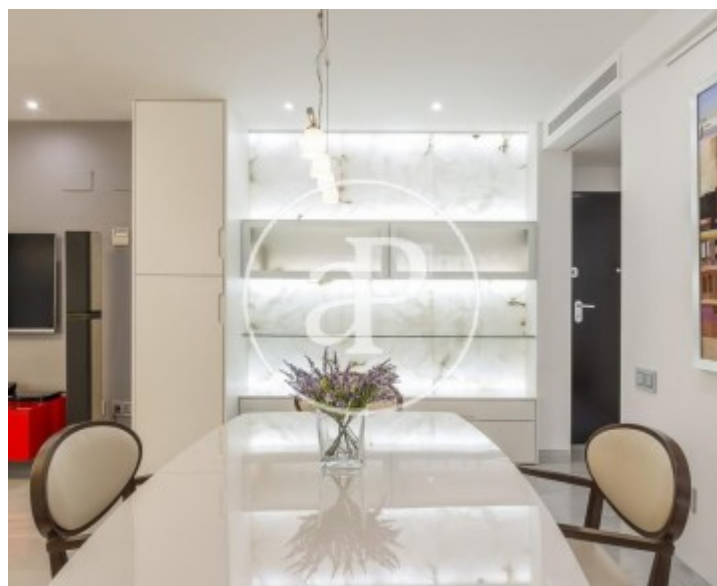
REF. VV2207062





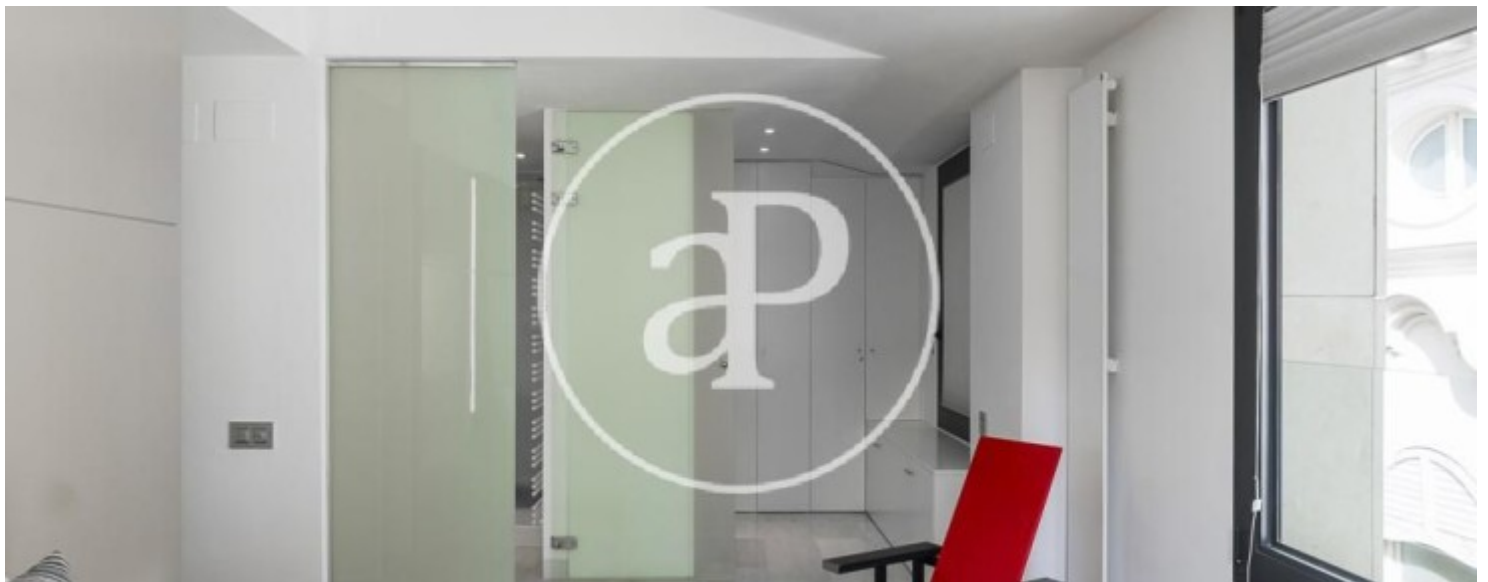
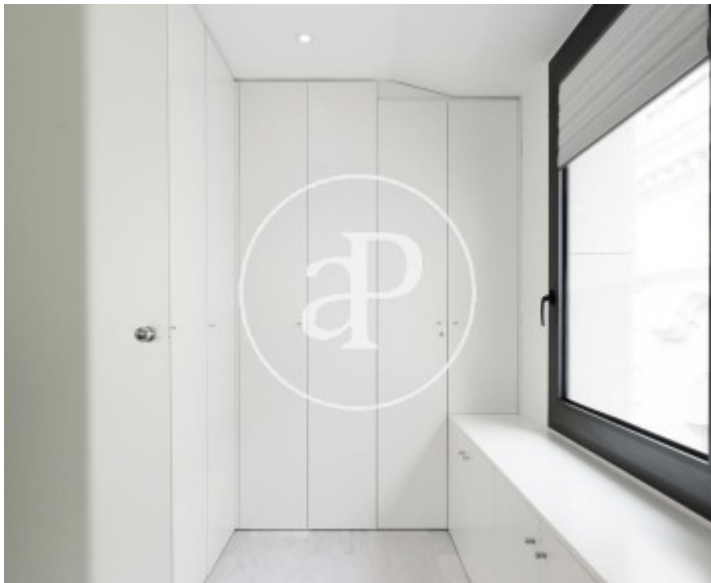
La Xerea, Valencia

REF. VV2207062



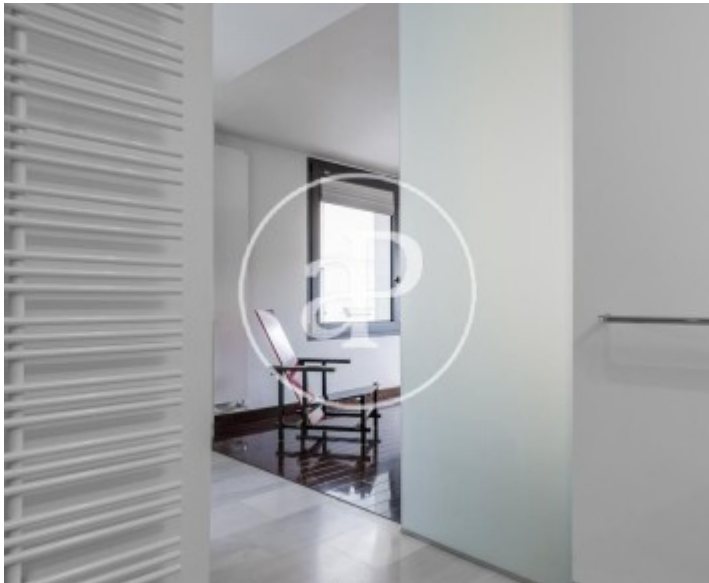
La Xerea, Valencia

REF. VV2207062



La Xerea, Valencia

REF. VV2207062



The information about any property is not binding to any offer or contract. Any verbal or written declaration made by aProperties with regards to the value or condition of the property should not be considered accurate or factual. The pictures make reference to some parts of the property at the times that they were taken. The areas, dimensions and distances that are given are approximate and should be checked by the client. The images are computer generated and are just an approximate indication of the real appearance of the property; these may change at any time. The information with regards to the property may also change at any time.



For **more information** or  
to make an appointment

[apropertiesvalencia@aproperties.es](mailto:apropertiesvalencia@aproperties.es)  
Tel: 96 128 59 65  
[www.aproperties.es](http://www.aproperties.es)