

La Xerea, Valencia

REF. AV1905013

# Spectacular, spacious and centrally located apartment in Valencia.

## Features

Surface

**250 m<sup>2</sup>**

Bedrooms

**4**

Bathrooms

**2**

✓ AACC

✓ Lift

Price

**2,000 €**



**Aproperties presents an architectural jewel in the Xerea district of Valencia, a few steps from the River Turia.**

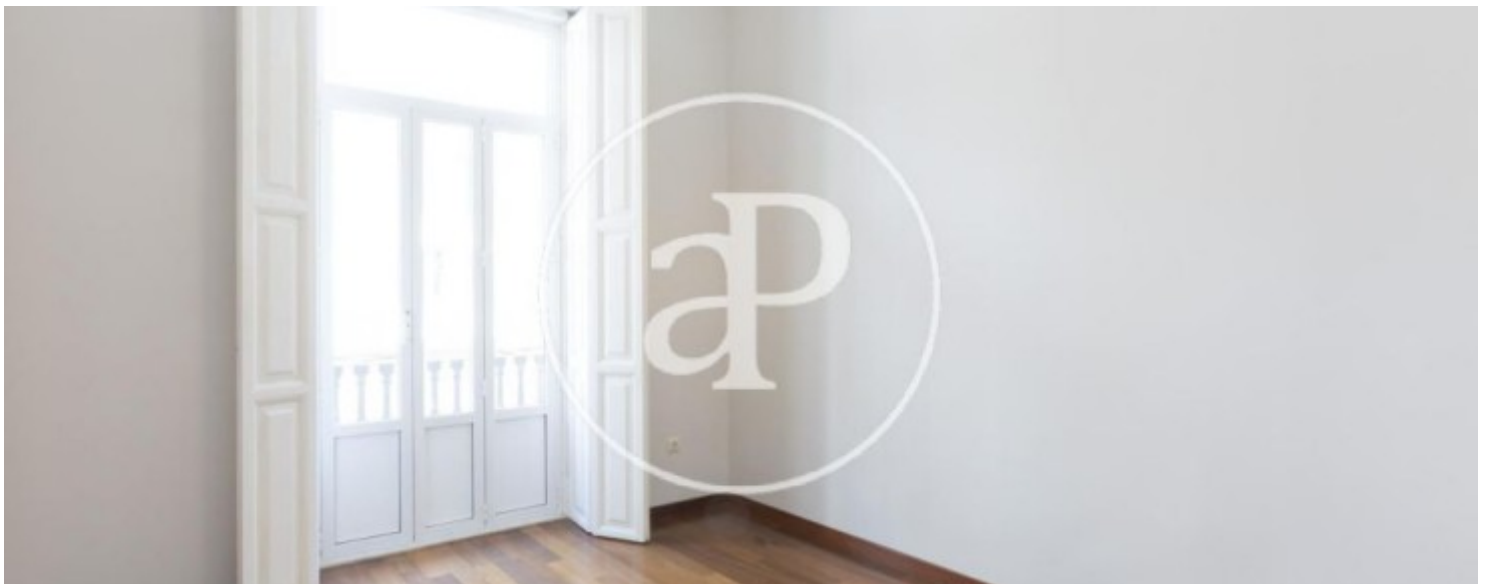
The house has a total of 250 m<sup>2</sup> in which they distribute their 4 bedrooms, 2 bathrooms, spacious living room - dining room all exterior and great kitchen. It has the highest qualities, armariadas throughout the house as well as parquet floors and original windows with double glazed windows. All this while preserving the authentic character of the house with its moldings and high ceilings. As soon as we access the house we find the great open dining room and at the same time divided into three majestic rooms by sliding doors all exterior with an

incredible light. If we continue down the hall we have access to three bedrooms on both sides and the first of the bathrooms, arriving to the fully equipped kitchen with high quality appliances and plenty of storage space, provided with a laundry room with washer - dryer and attached gallery. At the end of the house we find the last of the rooms and a last bathroom with shower. The neighborhood where the house is located is ideal for families and young couples, a few steps from all the services of the center, with the charm of one of the most stately and authentic neighborhoods of Valencia...

**Contact us,**  
we will be happy to assist you,  
to offer you more details and information.

La Xerea, Valencia

REF. AV1905013



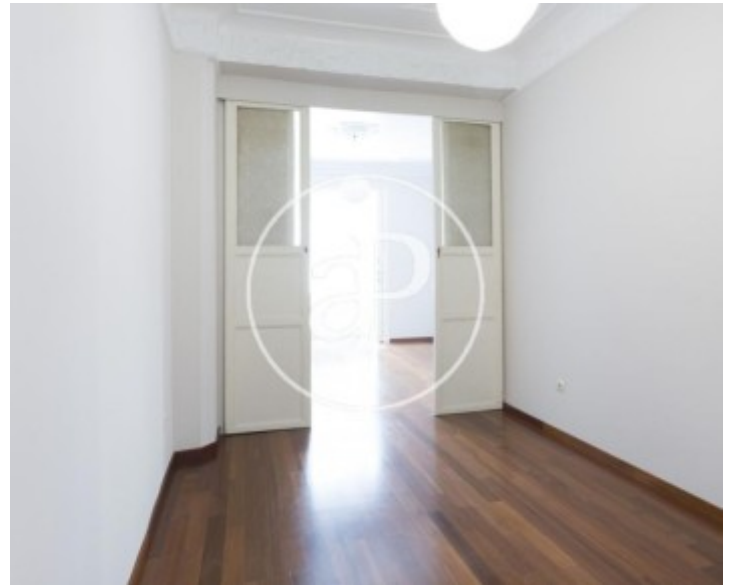
La Xerea, Valencia

REF. AV1905013



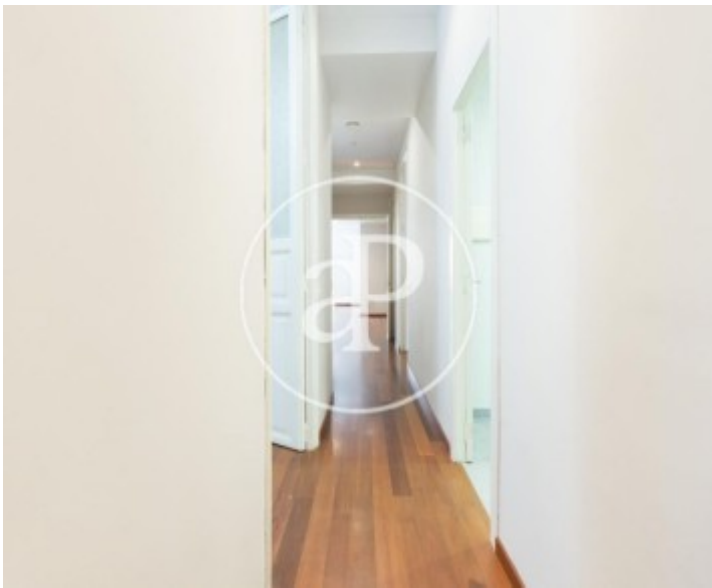
La Xerea, Valencia

REF. AV1905013



La Xerea, Valencia

REF. AV1905013



The information about any property is not binding to any offer or contract. Any verbal or written declaration made by aProperties with regards to the value or condition of the property should not be considered accurate or factual. The pictures make reference to some parts of the property at the times that they were taken. The areas, dimensions and distances that are given are approximate and should be checked by the client. The images are computer generated and are just an approximate indication of the real appearance of the property; these may change at any time. The information with regards to the property may also change at any time.

For **more information** or  
to make an appointment

[apropertiesvalencia@aproperties.es](mailto:apropertiesvalencia@aproperties.es)  
Tel: 96 128 59 65  
[www.aproperties.es](http://www.aproperties.es)