

La Xerea, Valencia

REF. VV2503030

Penthouse for Sale in la Xerea

Features

- ✓ Views
- ✓ Heating
- ✓ AACC
- ✓ Terrace
- ✓ Lift
- ✓ Has parking

Surface

215 m²

Bedrooms

3

Bathrooms

3

Price

1,780,000 €



aProperties presents this luxury penthouse with more than 70 metres of terrace.

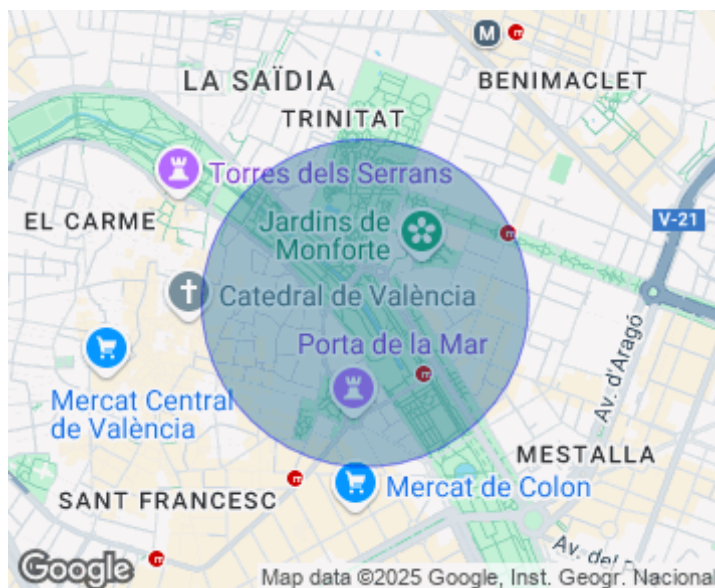
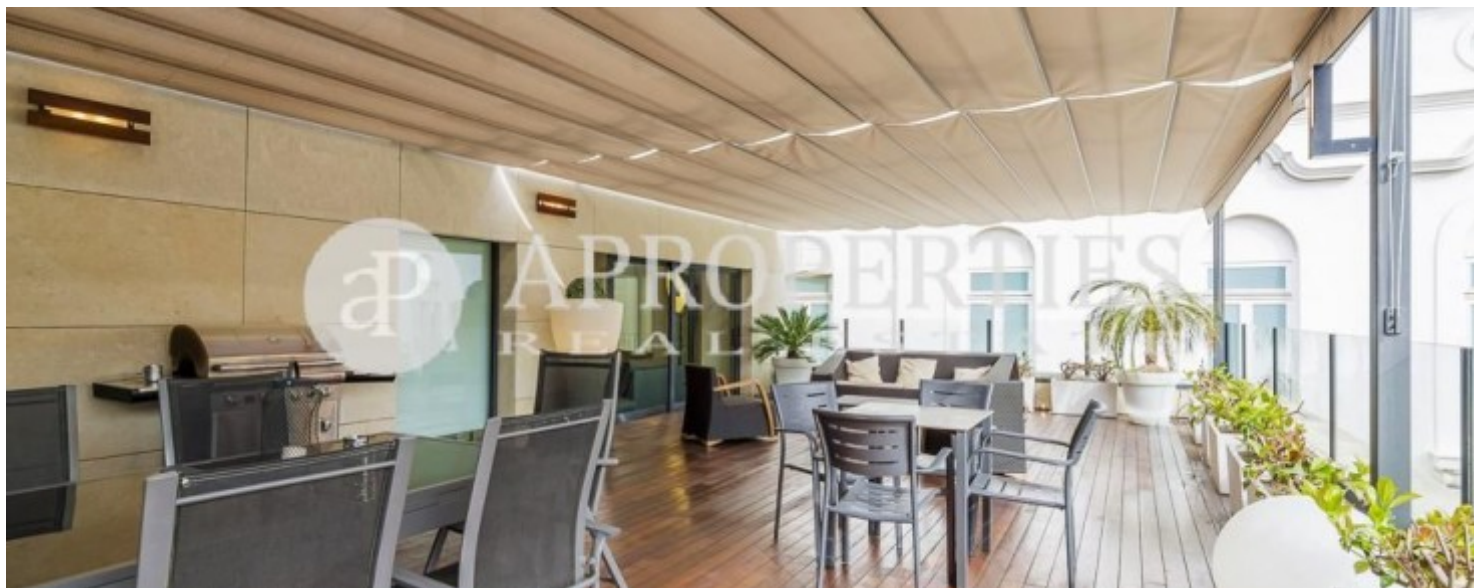
We have an extraordinary duplex penthouse for sale in Ciutat Vella, with approximately 70 m² of an incredible terrace. In the very heart of Valencia, very close to the Glorieta and Panter gardens, this impressive 215 m² duplex penthouse has a unique terrace of 72 m², perfectly conditioned. Located in a recently constructed building, it has two access doors on the main floor, as well as a living-dining room, a modern kitchen and a guest toilet, all with direct access to the terrace. On the upper floor, there are three bedrooms, with the master bedroom having an en-suite

bathroom and dressing room. The third bathroom is characterised by a skylight that gives it a special charm. This is a special and unique property, with a privileged enclave, built with the best recognised materials in the enclosures, kitchens and bathrooms, Italian marble in the flooring, with influences from architects of the 19th and 20th centuries, among which Gerrit Rietveld, Charles Rennie Mackintosh, Eileen Gray and Charles Eames stand out. The property includes a large parking space in the same building and an optional second parking space. In the heart of La Xerea, next to one of...

Contact us,
we will be happy to assist you,
to offer you more details and information.

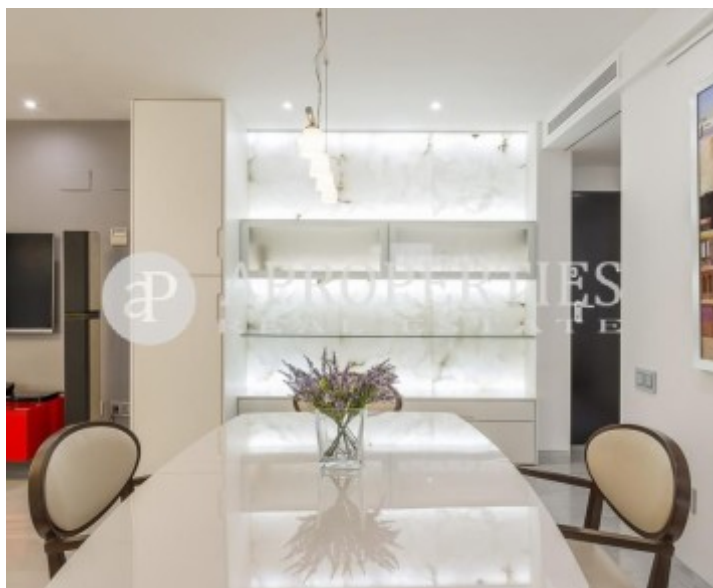
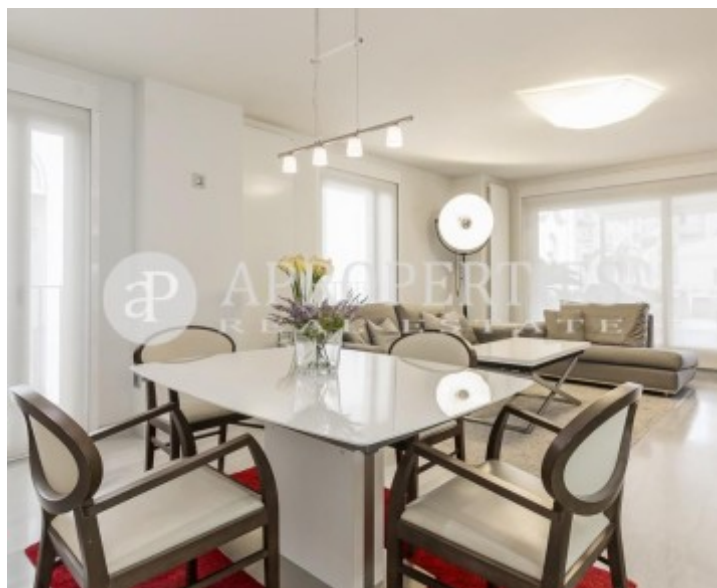
La Xerea, Valencia

REF. VV2503030



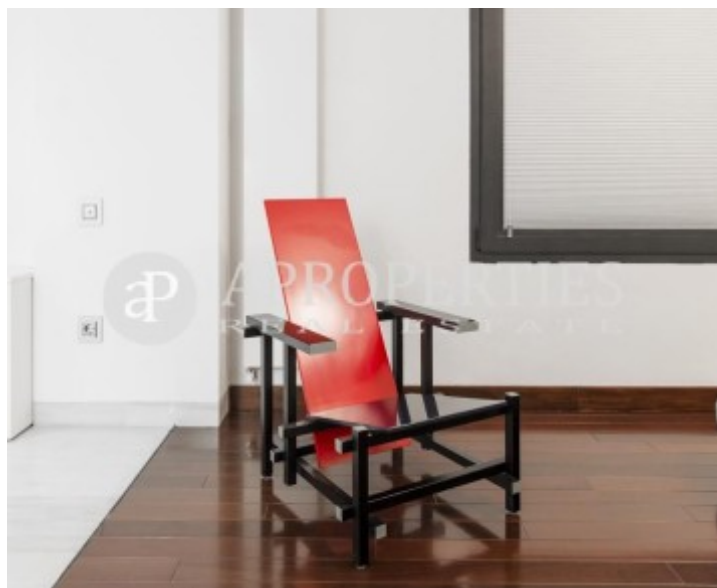
La Xerea, Valencia

REF. VV2503030



La Xerea, Valencia

REF. VV2503030



La Xerea, Valencia

REF. VV2503030



The information about any property is not binding to any offer or contract. Any verbal or written declaration made by aProperties with regards to the value or condition of the property should not be considered accurate or factual. The pictures make reference to some parts of the property at the times that they were taken. The areas, dimensions and distances that are given are approximate and should be checked by the client. The images are computer generated and are just an approximate indication of the real appearance of the property; these may change at any time. The information with regards to the property may also change at any time.

For **more information** or
to make an appointment

apropertiesvalencia@aproperties.es
Tel: 96 128 59 65
www.aproperties.es