



La Petxina, Valencia

REF. AV2512080

Flat for rent in La Petxina (Valencia)

Features

- ✓ Heating
- ✓ AACC
- ✓ Furnished
- ✓ Lift

Surface

47 m²

Bedrooms

2

Bathroom

1

Price

1,100 €



aProperties presents this apartment located just a few meters from Ángel Guimerá metro station, in the La Petxina neighborhood.

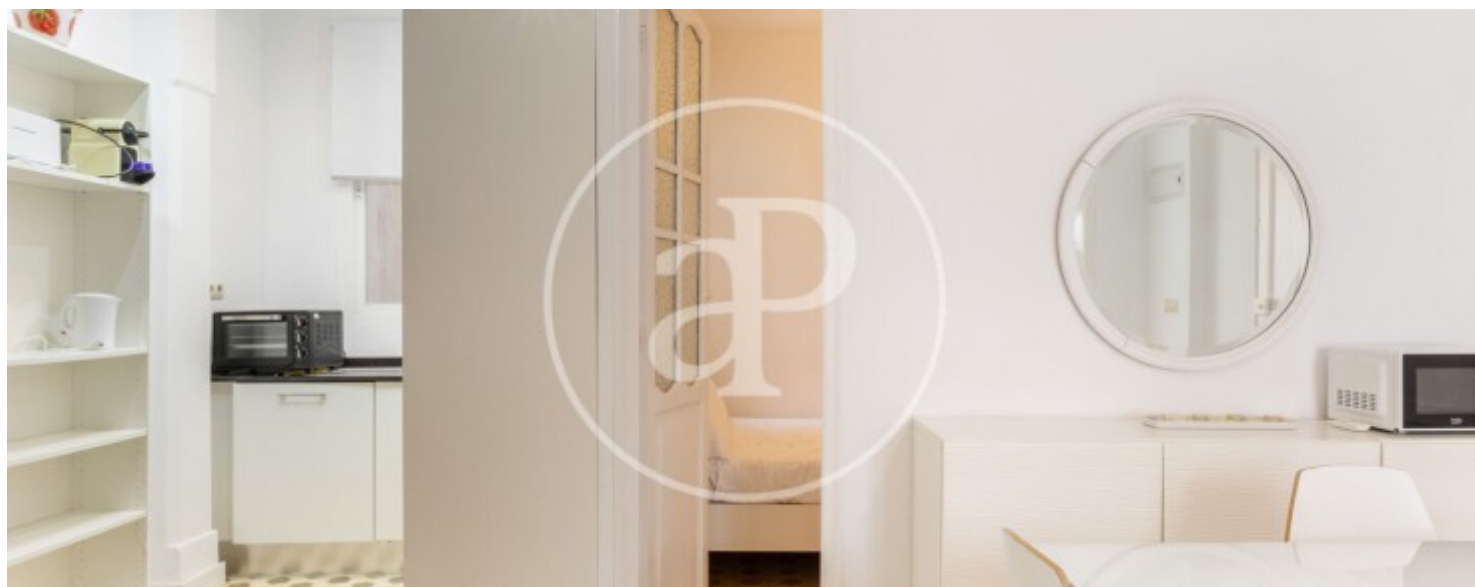
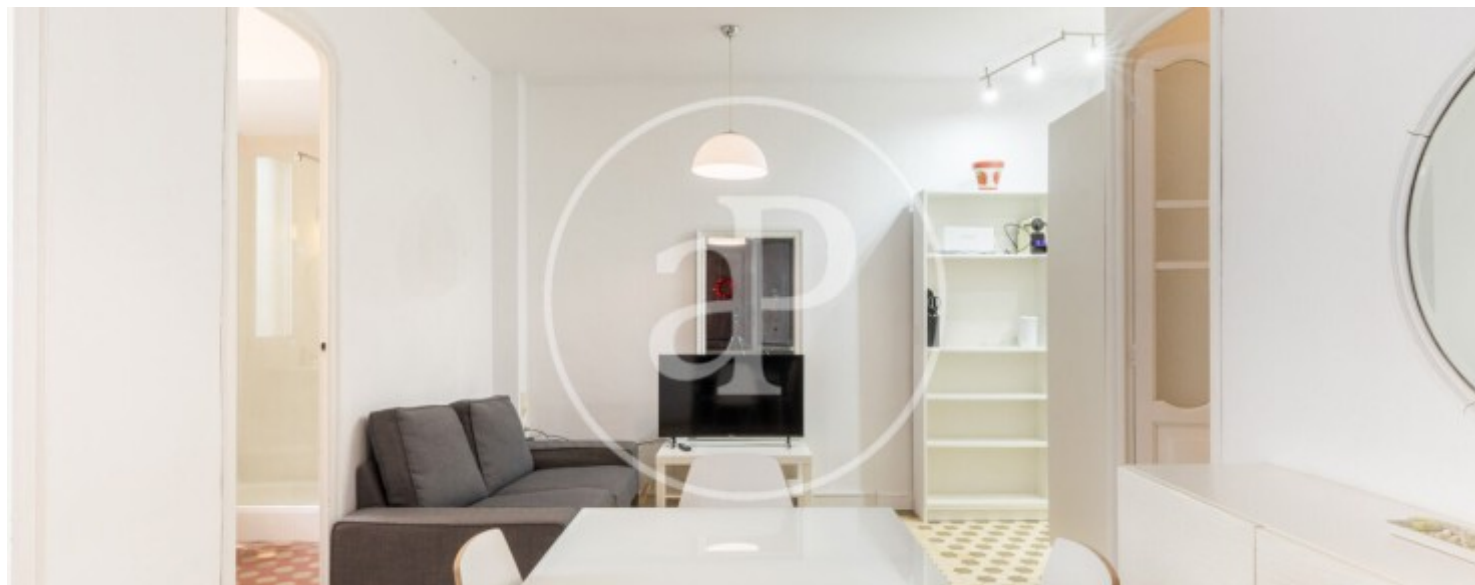
With two bedrooms—one double and one single—this versatile property adapts to different needs, whether as an additional bedroom or a home office, depending on your preferences. Upon entering the property, we are welcomed by an entrance hall leading to a spacious living room. The space is decorated in a modern style and features hot and cold air conditioning, ensuring optimal comfort throughout the year. The apartment includes a fully equipped kitchen. Continuing through the property, we reach the rest area, which

consists of two bedrooms and one bathroom. The main bedroom features a comfortable double bed. The apartment is located on the third floor with an elevator. The La Petxina neighborhood is very well connected, with nearby public transport and all kinds of services, shops, and schools, and is just a 15-minute walk from the city center. A recently developed “superblock” has improved pedestrian spaces with benches, green areas, and children’s playgrounds, enhancing its well-established residential character. It also offers excellent access to green spaces, as the former Turia...

Contact us,
we will be happy to assist you,
to offer you more details and information.

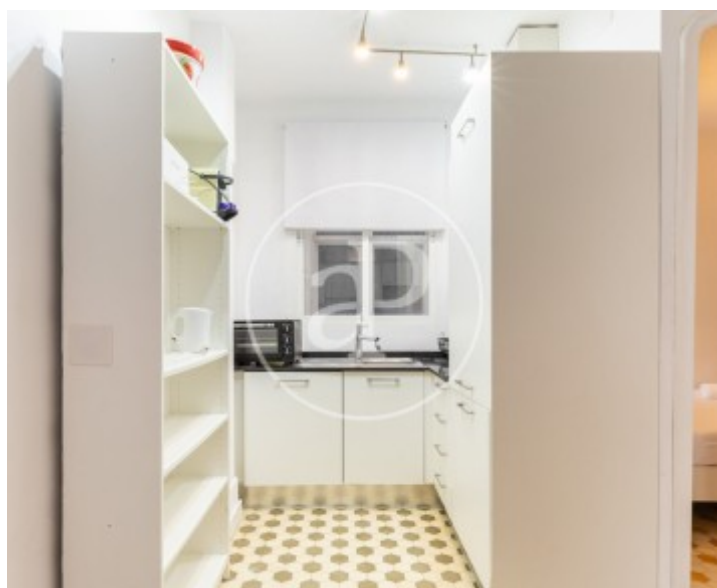
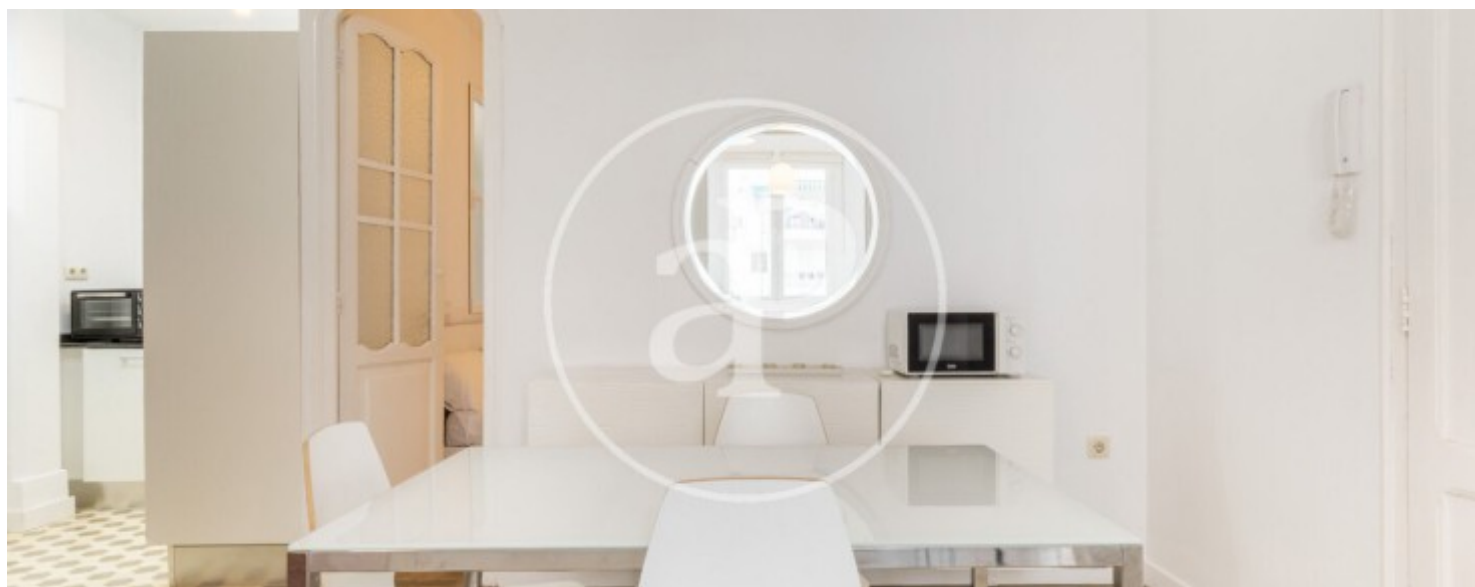
La Petxina, Valencia

REF. AV2512080



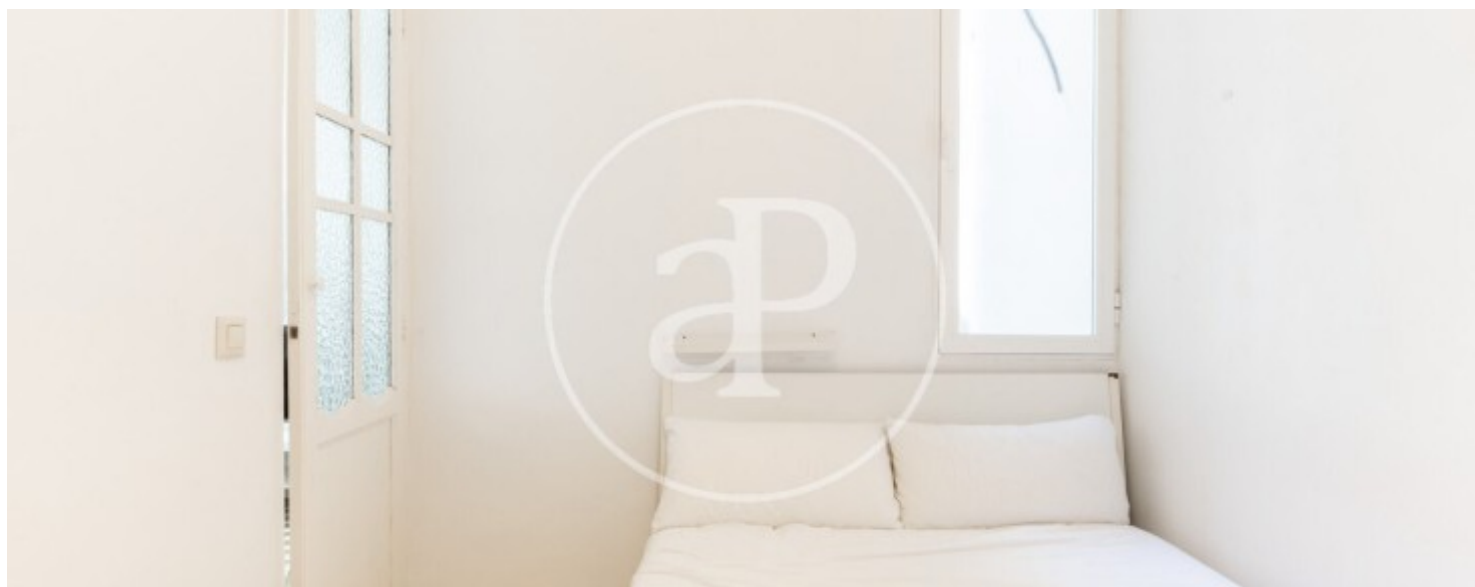
La Petxina, Valencia

REF. AV2512080



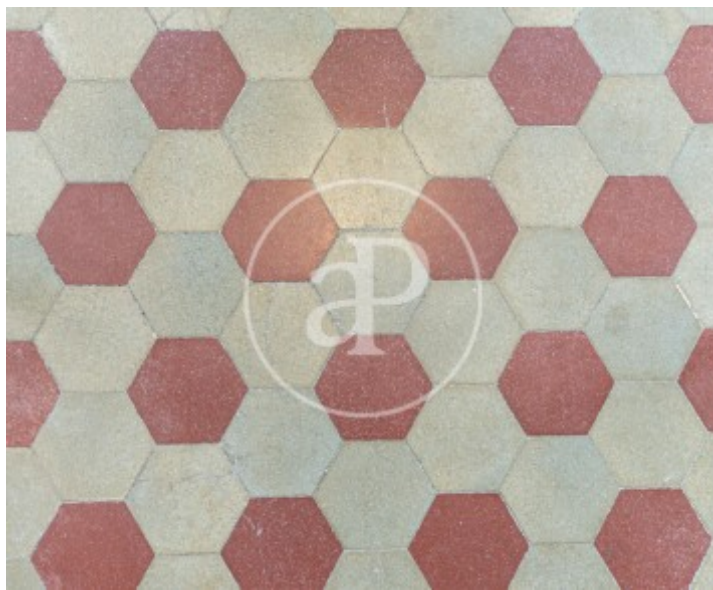
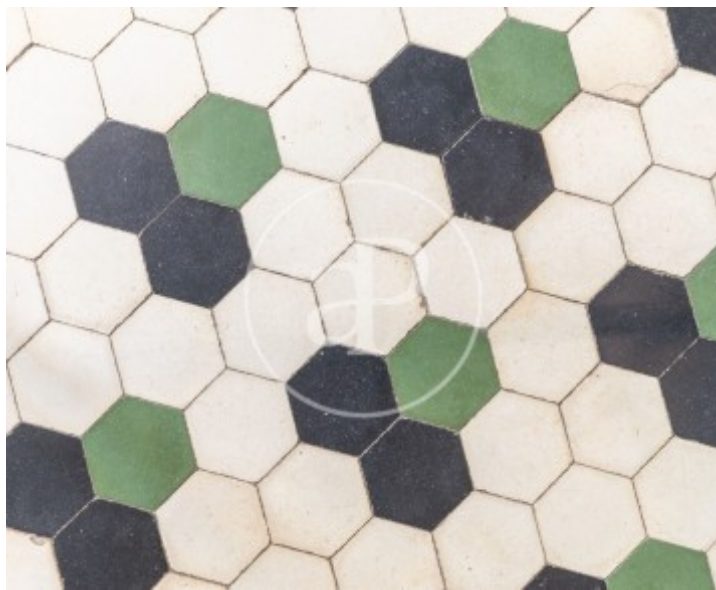
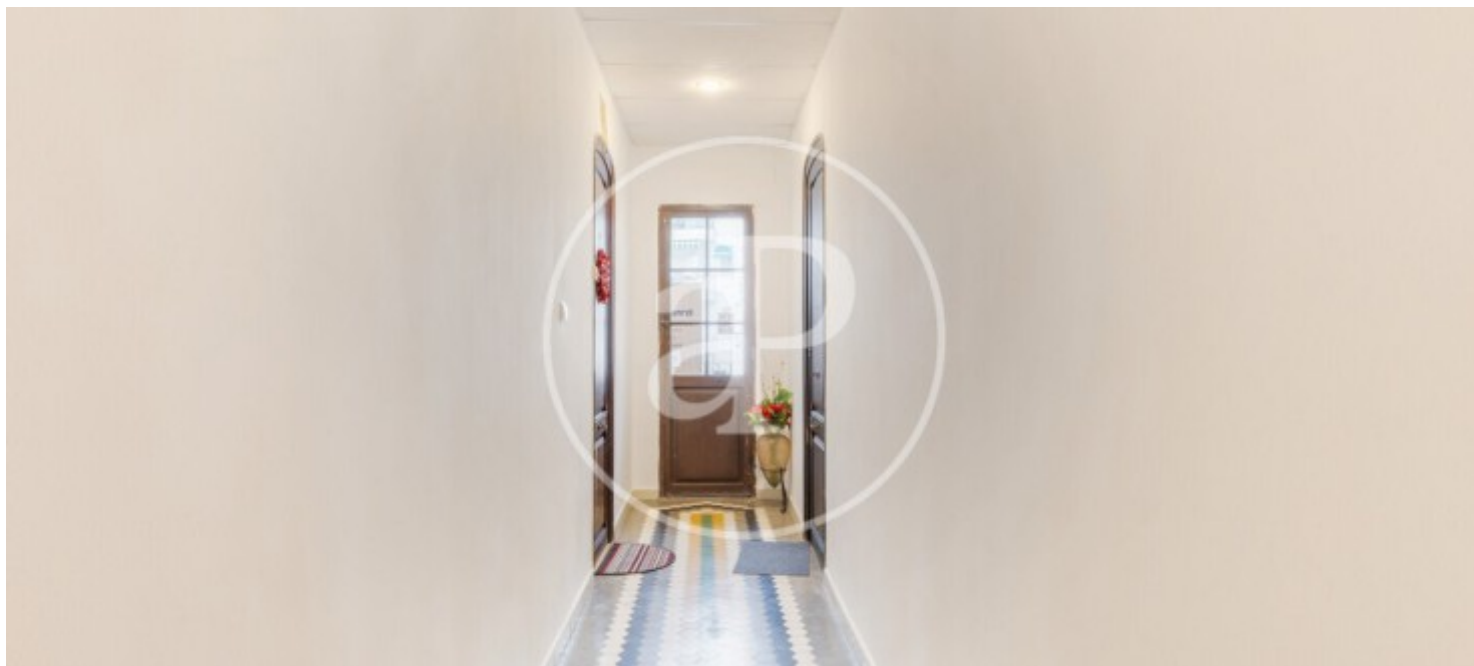
La Petxina, Valencia

REF. AV2512080



La Petxina, Valencia

REF. AV2512080



The information about any property is not binding to any offer or contract. Any verbal or written declaration made by aProperties with regards to the value or condition of the property should not be considered accurate or factual. The pictures make reference to some parts of the property at the times that they were taken. The areas, dimensions and distances that are given are approximate and should be checked by the client. The images are computer generated and are just an approximate indication of the real appearance of the property; these may change at any time. The information with regards to the property may also change at any time.

For **more information** or
to make an appointment

apropertiesvalencia@aproperties.es
Tel: 96 128 59 65
www.aproperties.es