

Jesús, Valencia

REF. VV2602035

Flat for sale with views in Jesús (Valencia)

Features

- ✓ Views
- ✓ AACC
- ✓ Lift

Price
229,000 €

Surface

84 m²

Bedrooms

3

Bathroom

1



Aproperties presents a property located in San Marcelino, in a rapidly expanding and well-connected area.

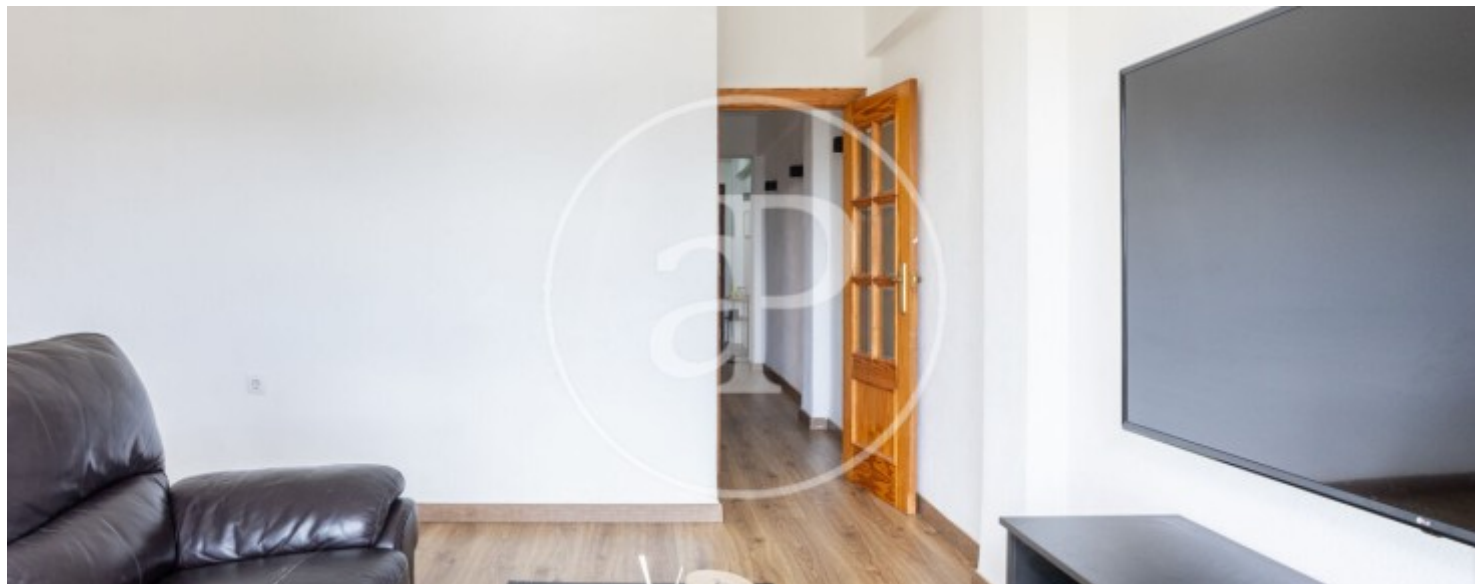
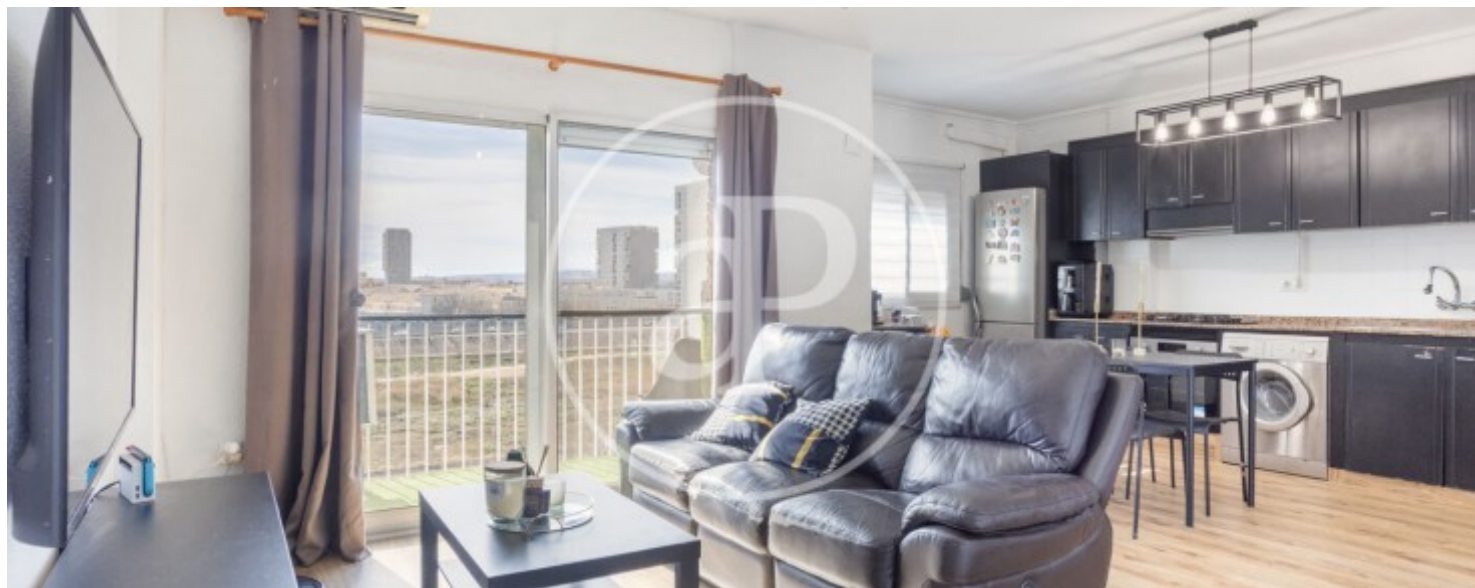
This bright home combines functionality, comfort, and excellent future potential. The property features a cozy living-dining room, a warm and versatile space ideal for both relaxing and family gatherings. The well-designed kitchen-diner offers practicality and comfort for everyday living. The sleeping area consists of a master bedroom and two single bedrooms. The fully renovated bathroom includes a modern walk-in shower and contemporary finishes that provide elegance and comfort. Notable features include wooden flooring throughout the property, solid oak doors,

a reinforced security door, and Climalit double-glazed windows ensuring excellent thermal and acoustic insulation. In addition, the property is equipped with air conditioning to guarantee maximum comfort all year round. The home also benefits from a pleasant elevated terrace, perfect for placing a small table and two chairs to enjoy outdoor moments with complete privacy. Excellent bus connections and a future metro station opening nearby will further increase its value. Additionally, the Infinity Shopping Center — set to become the largest shopping centre in Valencia — is...

Contact us,
we will be happy to assist you,
to offer you more details and information.

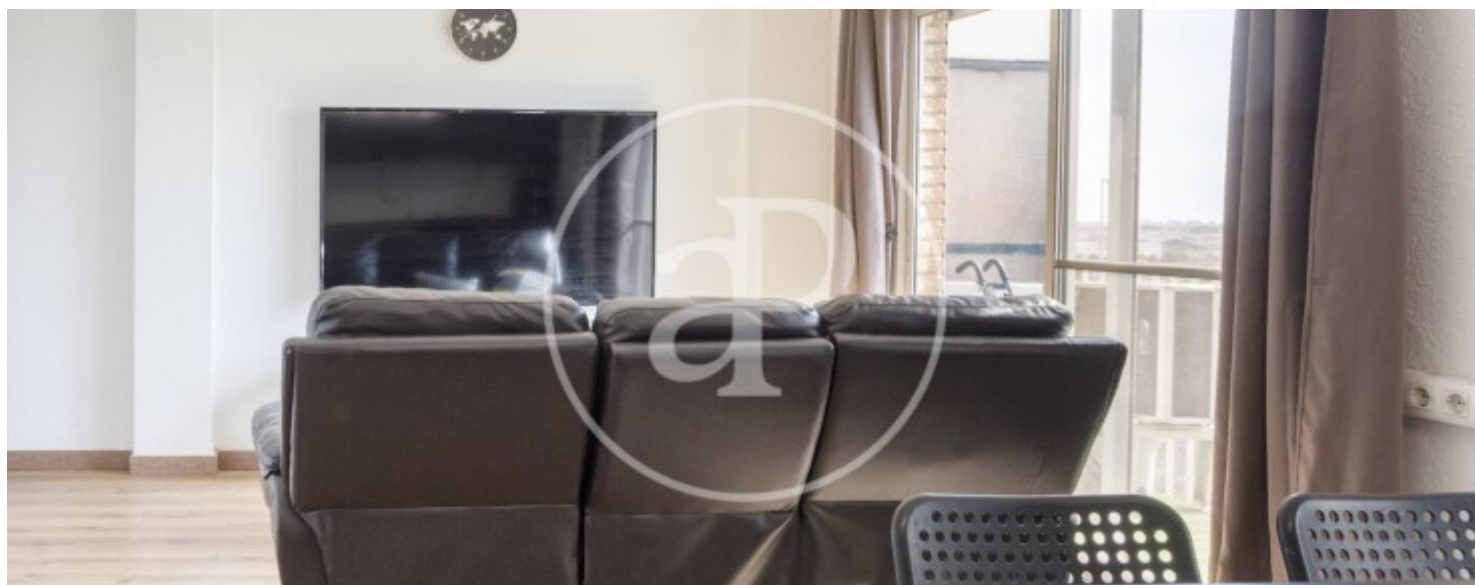
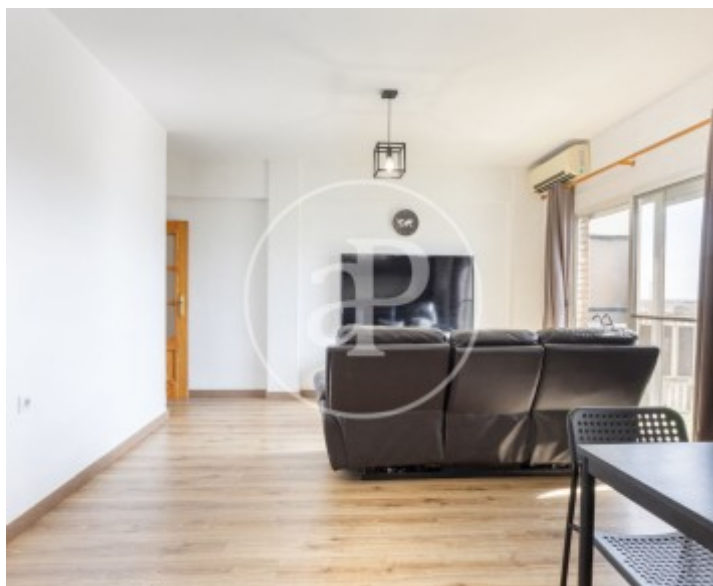
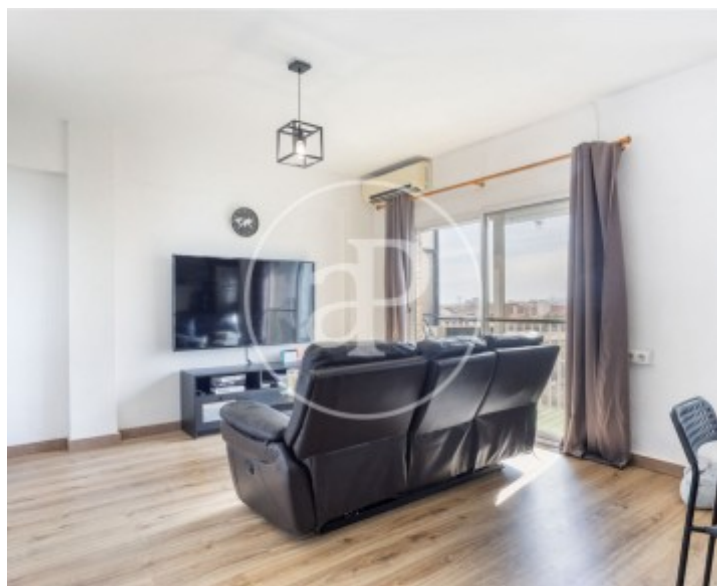
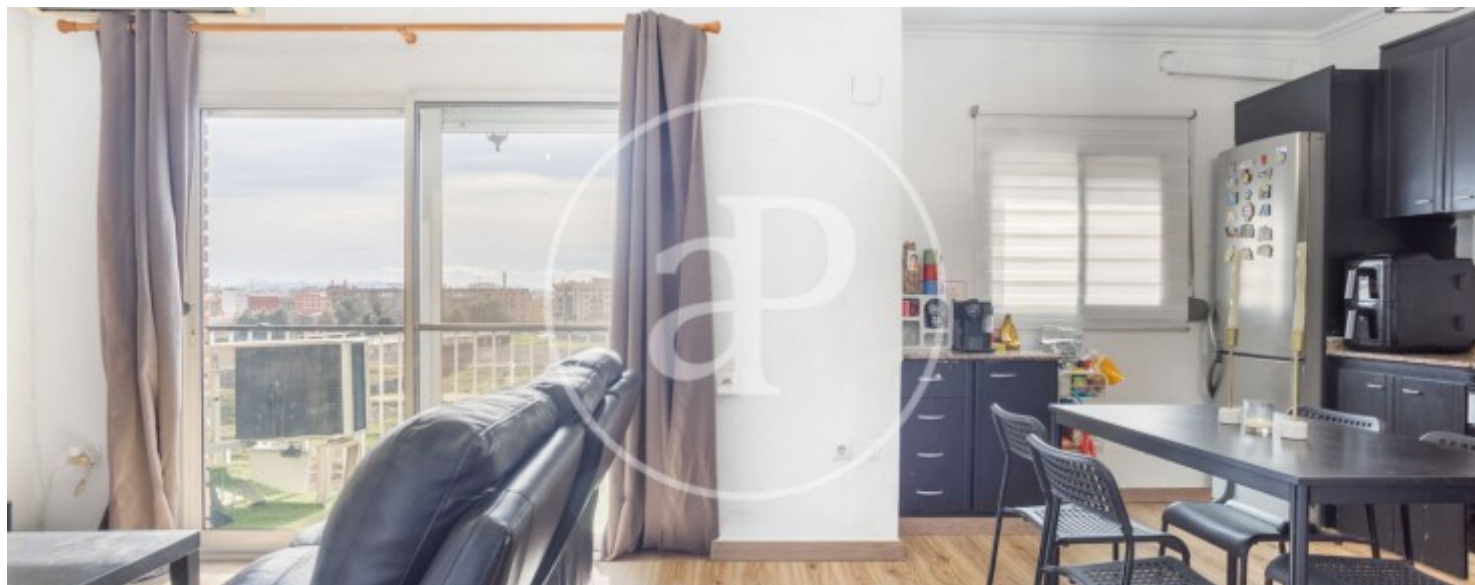
Jesús, Valencia

REF. VV2602035



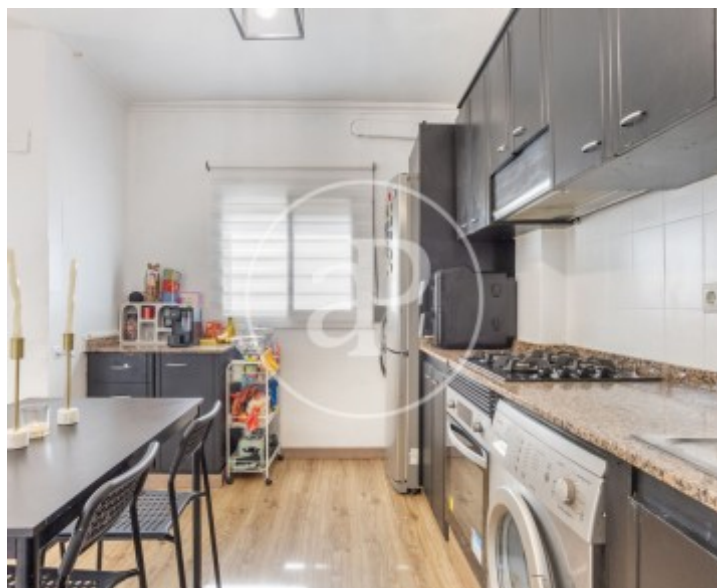
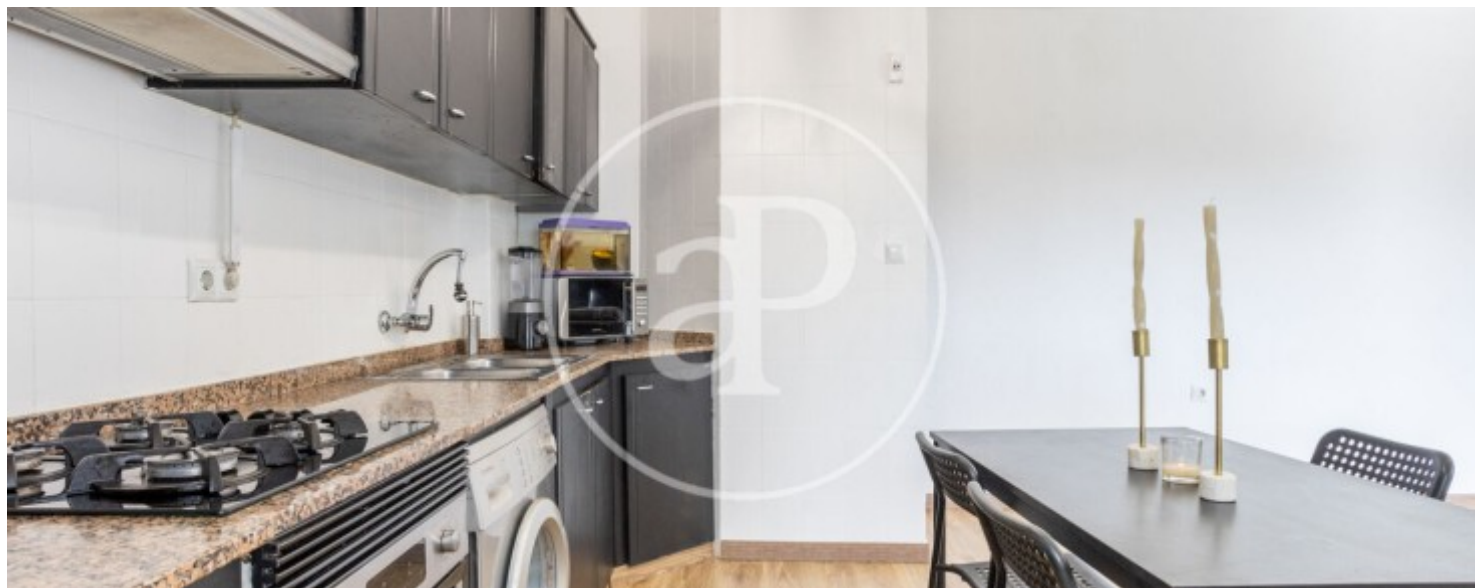
Jesús, Valencia

REF. VV2602035



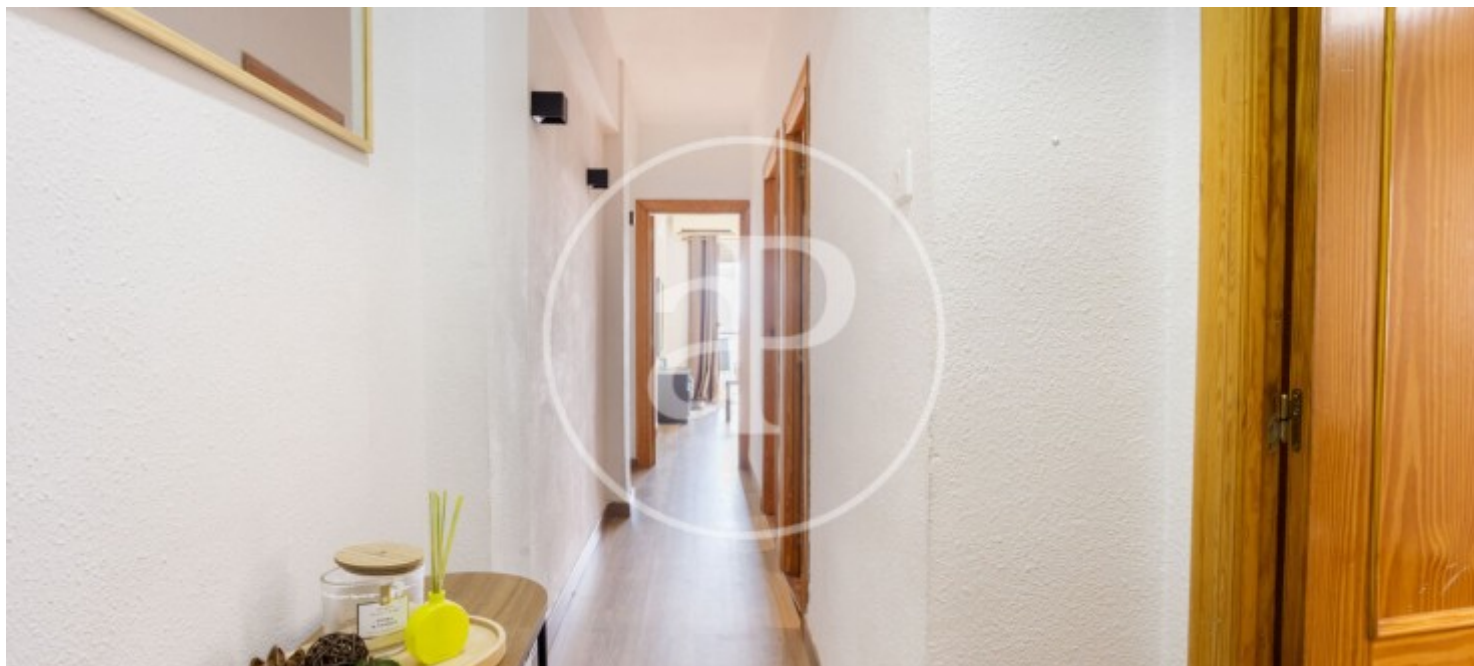
Jesús, Valencia

REF. VV2602035



Jesús, Valencia

REF. VV2602035



The information about any property is not binding to any offer or contract. Any verbal or written declaration made by aProperties with regards to the value or condition of the property should not be considered accurate or factual. The pictures make reference to some parts of the property at the times that they were taken. The areas, dimensions and distances that are given are approximate and should be checked by the client. The images are computer generated and are just an approximate indication of the real appearance of the property; these may change at any time. The information with regards to the property may also change at any time.

For **more information** or
to make an appointment

apropertiesvalencia@aproperties.es
Tel: 96 128 59 65
www.aproperties.es