

Jesús, Valencia

REF. AV2512015

Flat for rent in Patraix (Valencia)

Features

Surface

73 m²

Bedrooms

2

Bathroom

1

✓ Furnished

Price

1,200 €



aProperties presents this beautiful renovated flat with parquet flooring and a kitchen island.

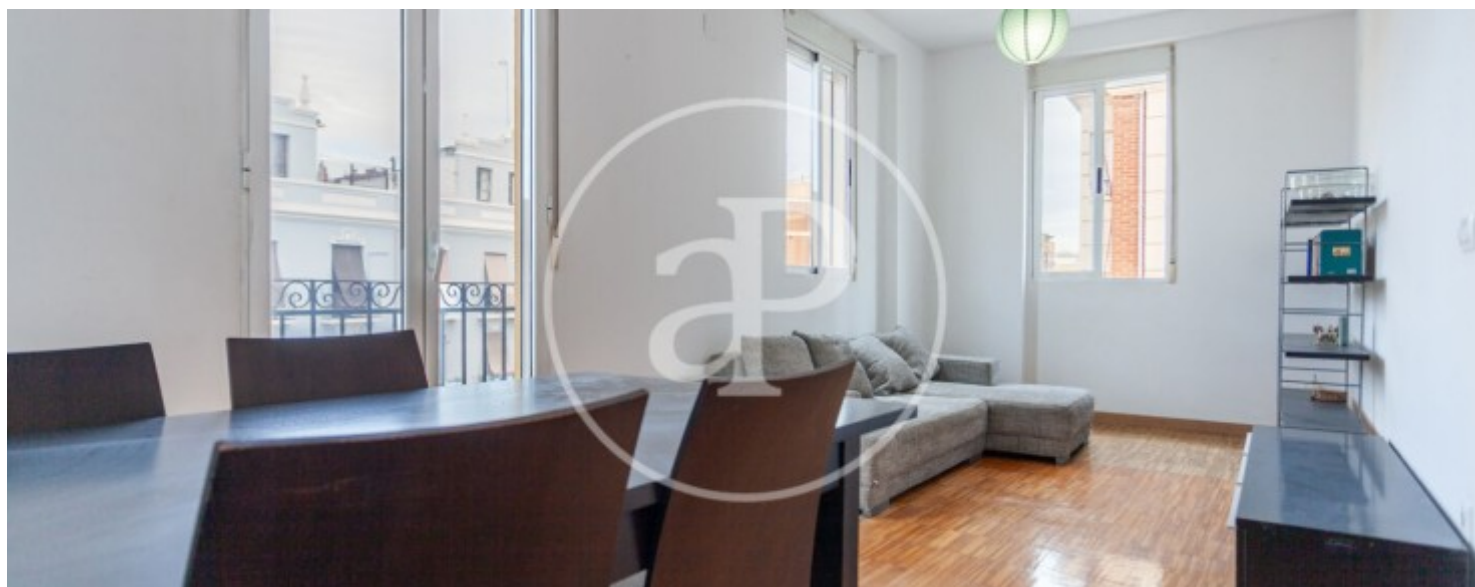
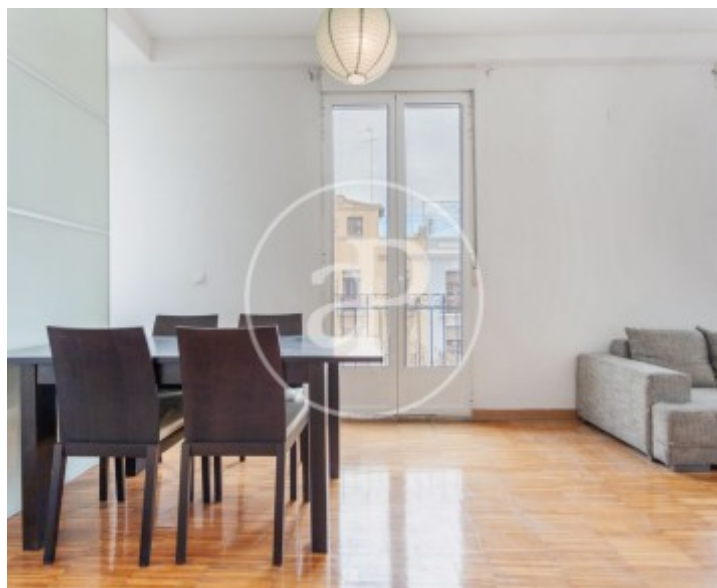
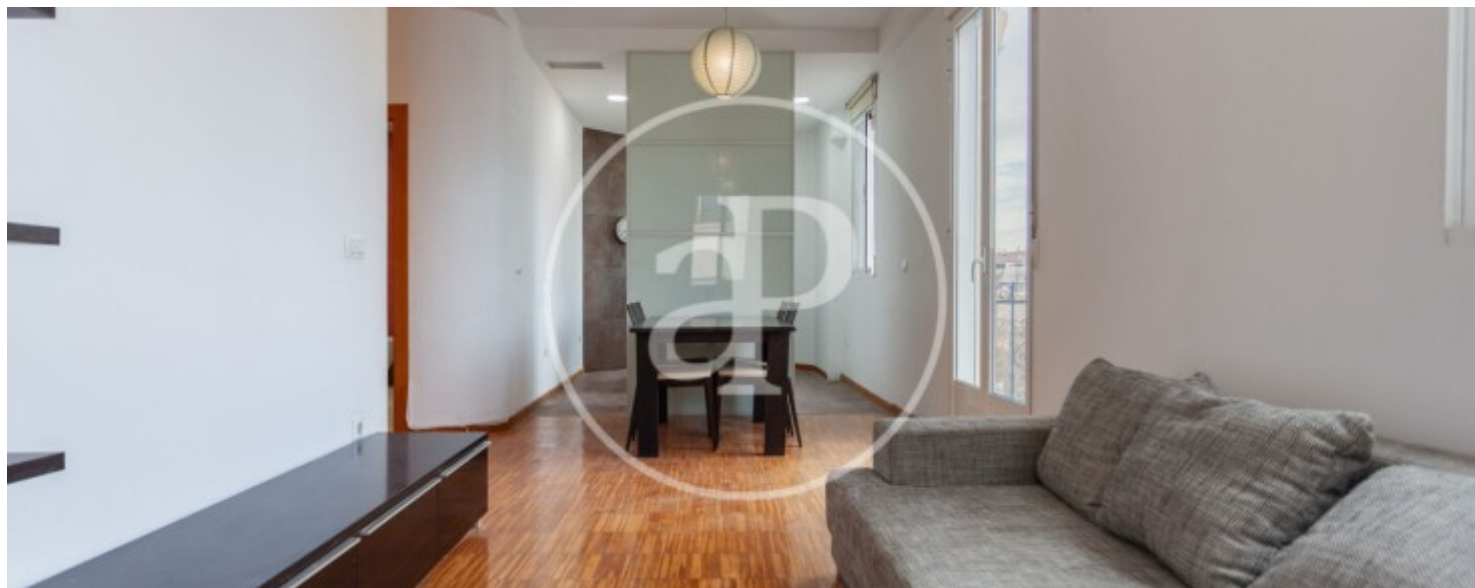
It is located in Jesús, in the La Raiosa neighbourhood, next to the municipal market and very well connected. It is just a short walk from the Joaquín Sorolla AVE station, from where you can reach the centre of Valencia in just a few minutes on foot. Road connections are excellent thanks to the many major avenues in the area, and public transport options include Jesús metro station (lines 0, 1, 2 and 7) and numerous bus routes. The area also offers all essential services: schools, parks, pharmacies, restaurants, supermarkets, health centres, and

more. The property has 73 m² of usable space and is rented furnished with a fully equipped kitchen. It features 2 spacious bedrooms, 1 bathroom, a large living-dining room with a French balcony, and an open-plan kitchen. The location is ideal for those who rely on public transport, with a bus stop practically at the doorstep and the metro station just 75 m away. The Joaquín Sorolla train station is only 250 m from the property. There is a lovely park next to the building where children can play. On the same street you will find a gym, and several supermarkets are located nearby....

Contact us,
we will be happy to assist you,
to offer you more details and information.

Jesús, Valencia

REF. AV2512015



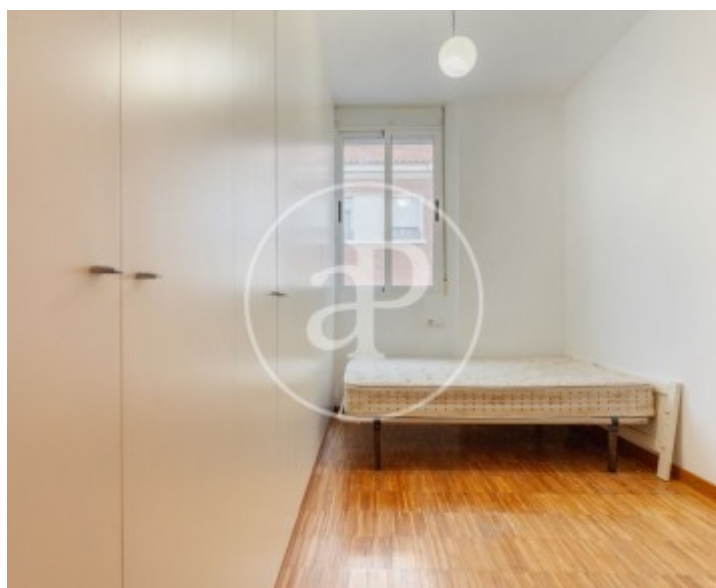
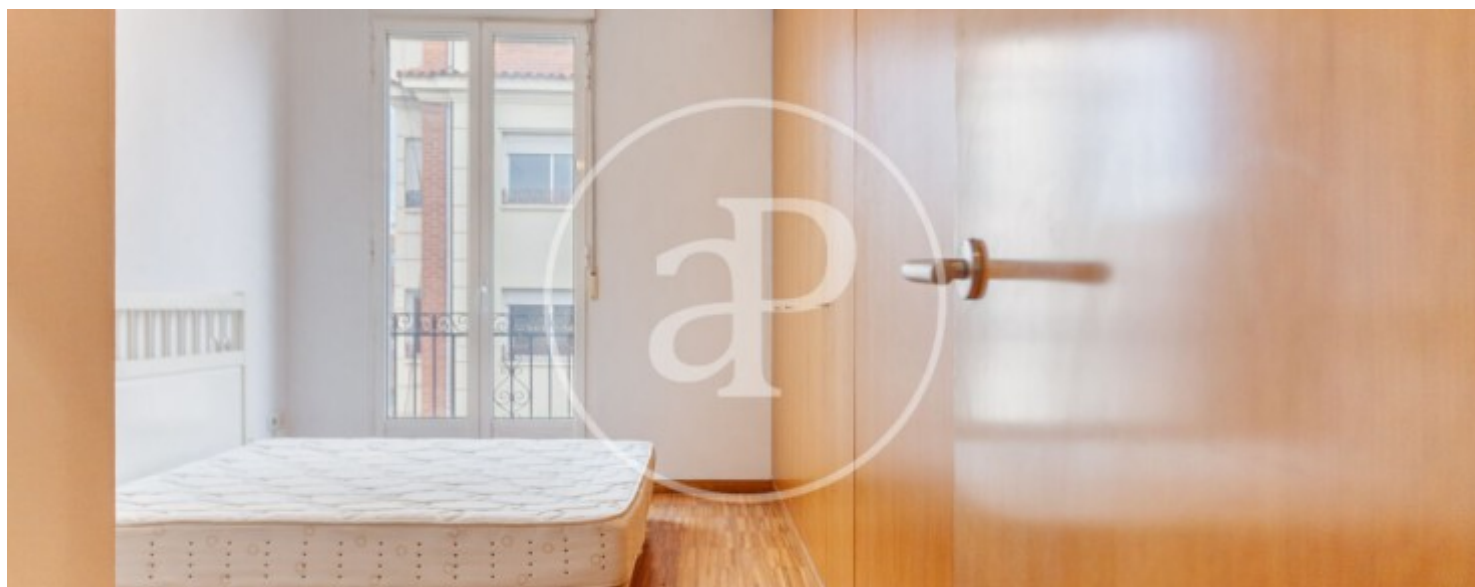
Jesús, Valencia

REF. AV2512015



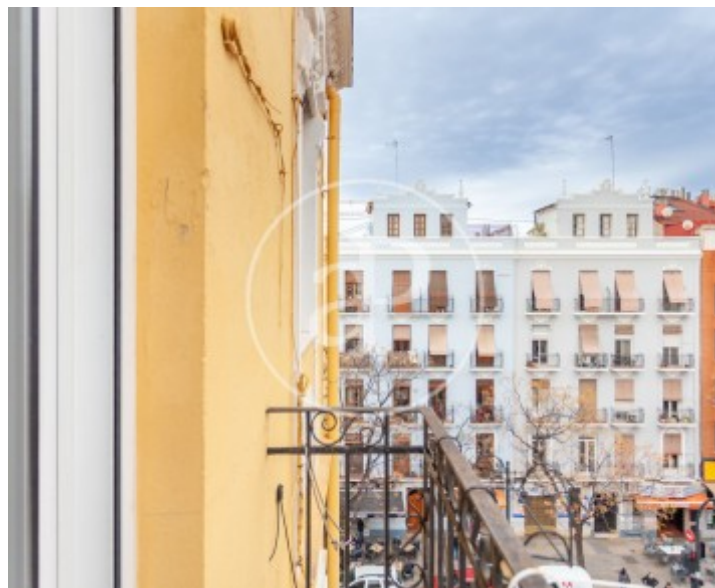
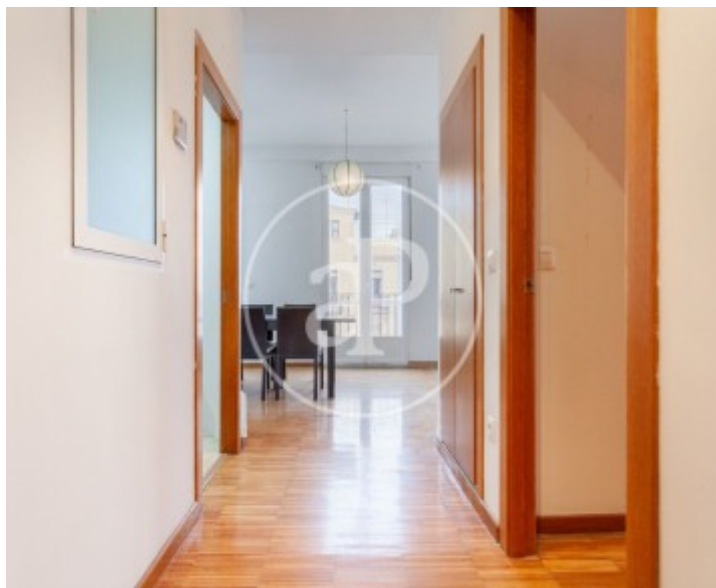
Jesús, Valencia

REF. AV2512015



Jesús, Valencia

REF. AV2512015



The information about any property is not binding to any offer or contract. Any verbal or written declaration made by aProperties with regards to the value or condition of the property should not be considered accurate or factual. The pictures make reference to some parts of the property at the times that they were taken. The areas, dimensions and distances that are given are approximate and should be checked by the client. The images are computer generated and are just an approximate indication of the real appearance of the property; these may change at any time. The information with regards to the property may also change at any time.

For **more information** or
to make an appointment

apropertiesvalencia@aproperties.es
Tel: 96 128 59 65
www.aproperties.es