



Jesús, Valencia

REF. VV2510010

# Flat for sale with Terrace in Jesús (Valencia)

## Features

Surface

143 m<sup>2</sup>

Bedrooms

3

Bathrooms

2

✓ Terrace

Price

299,000 €



**aProperties presents this cozy, fully renovated home with a sound structure and ready to move into.**

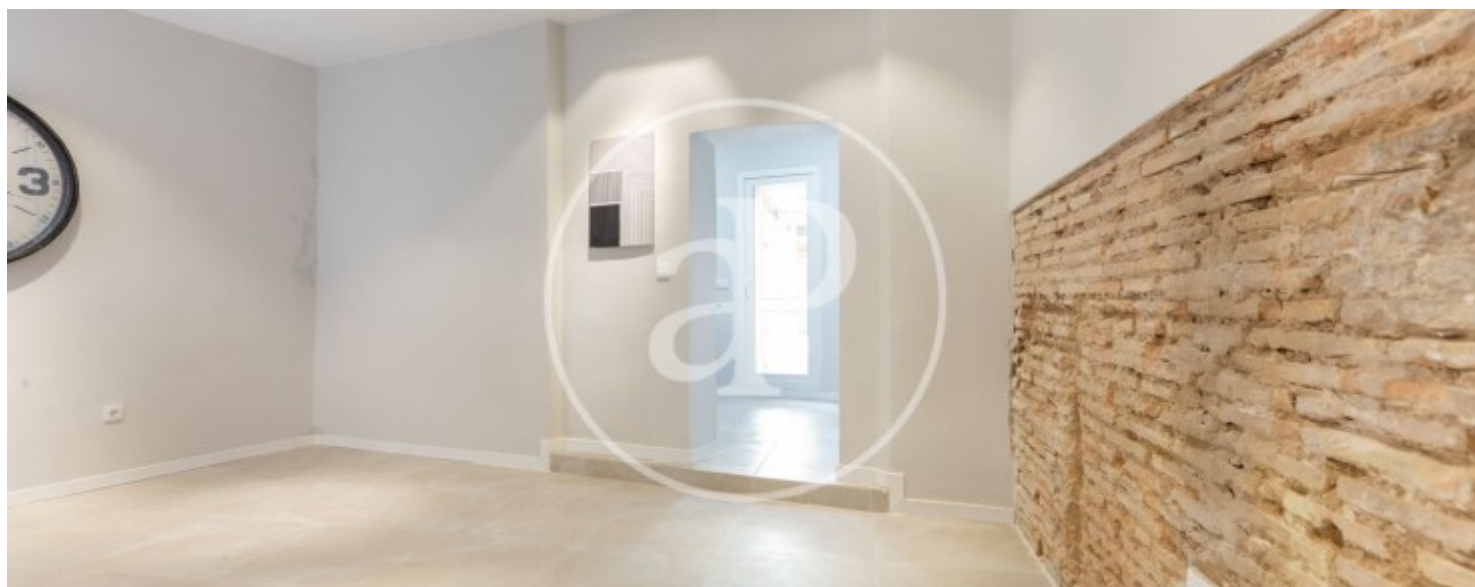
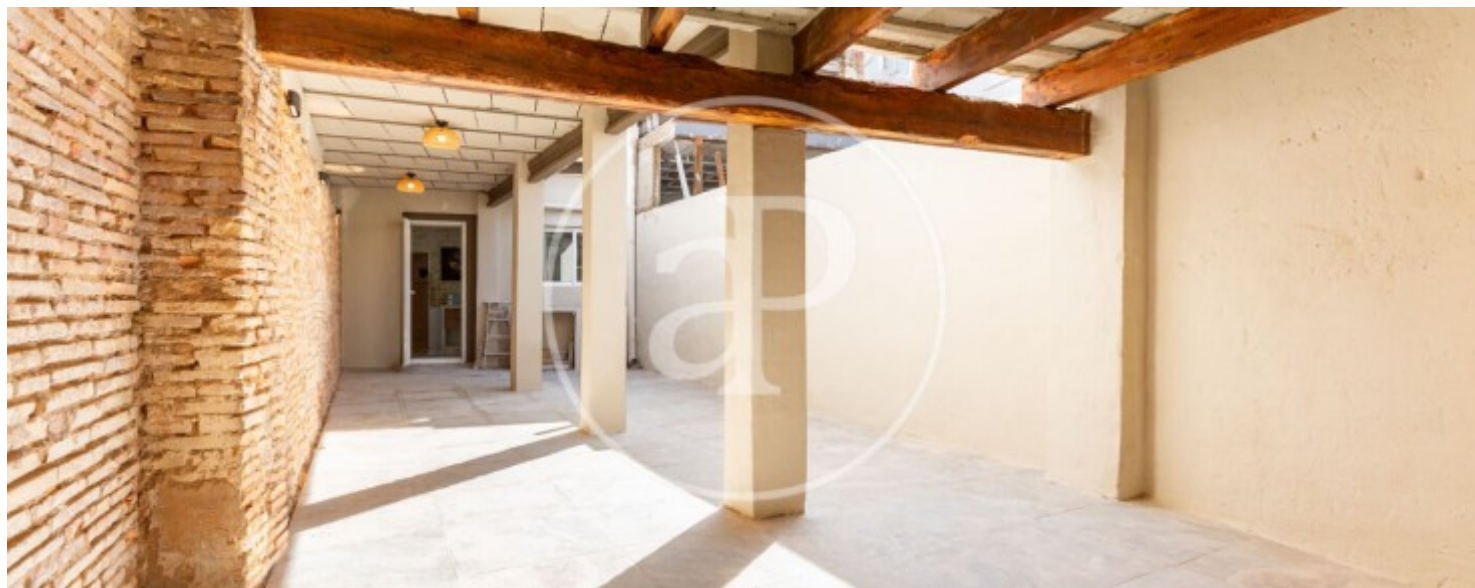
It has an independent entrance through the original wooden door, which adds character and a traditional touch from the very first moment. As you enter, a spacious and bright area welcomes you, comfortably distributing access to all rooms. The first bedroom, located to the left, features a window facing the street, while the other two are oriented towards the rear patio, ensuring a quiet and well-ventilated atmosphere. The home includes two full bathrooms, a comfortable living room, and a separate kitchen with direct access to a large private-use patio—perfect

for enjoying the outdoors. This outdoor space offers enough room to install an outdoor kitchen, a paella cooker, and a built-in barbecue, ideal for gatherings with family or friends. Additionally, its orientation allows you to enjoy the afternoon sunlight, creating a warm and pleasant ambiance. The location is excellent: next to the new La Rambleta sports complex, surrounded by shops, restaurants, and with good bus connections to the center of Valencia. A charming, comfortable, and practical property that combines history, comfort, and a fantastic outdoor space. Perfect both for living and...

**Contact us,**  
we will be happy to assist you,  
to offer you more details and information.

Jesús, Valencia

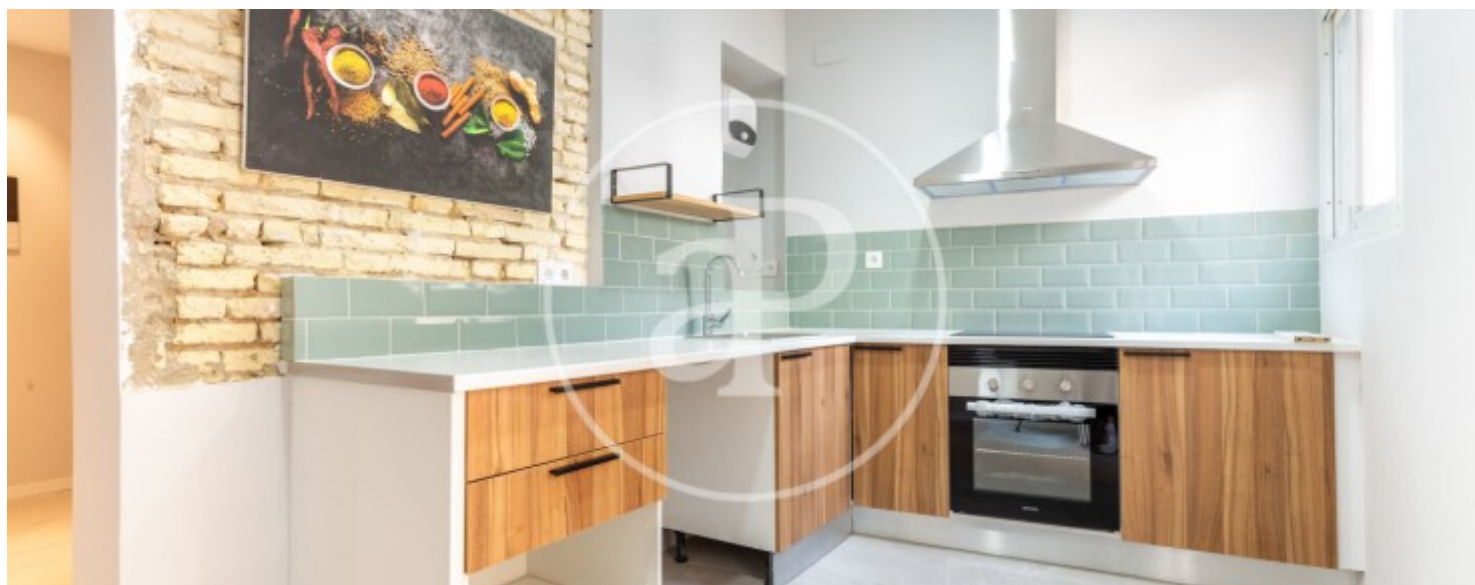
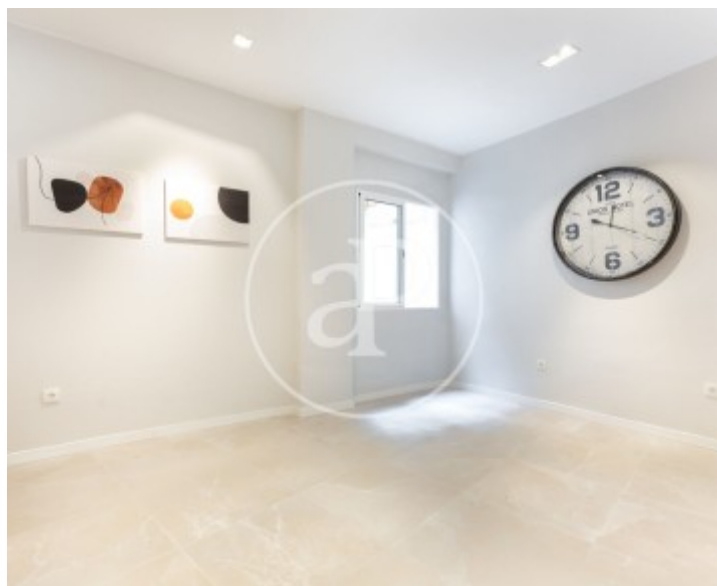
REF. VV2510010





Jesús, Valencia

REF. VV2510010



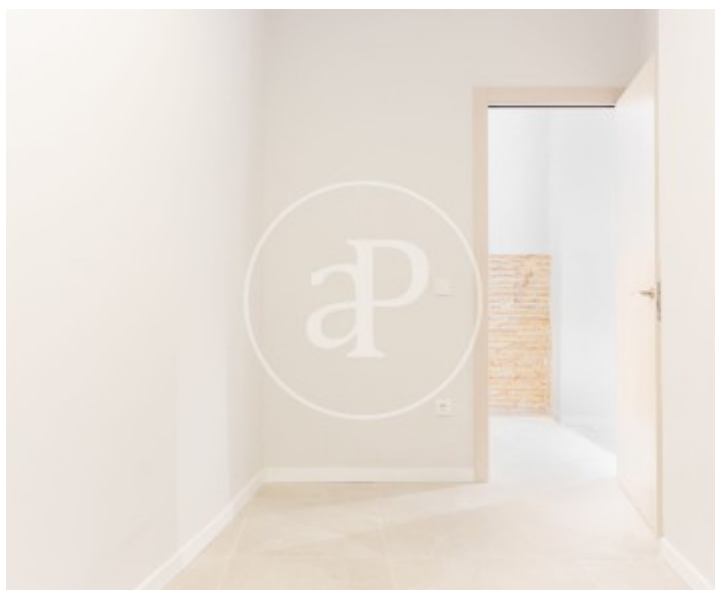
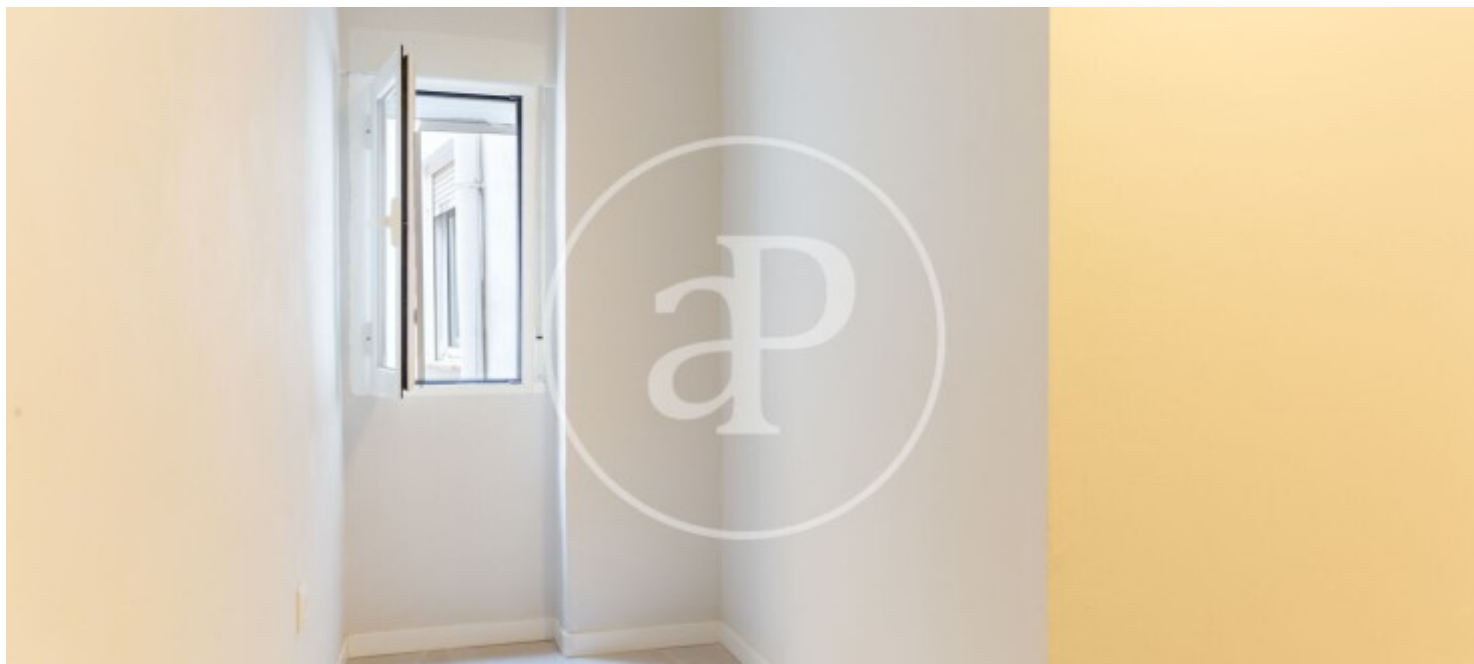
Jesús, Valencia

REF. VV2510010



Jesús, Valencia

REF. VV2510010



The information about any property is not binding to any offer or contract. Any verbal or written declaration made by aProperties with regards to the value or condition of the property should not be considered accurate or factual. The pictures make reference to some parts of the property at the times that they were taken. The areas, dimensions and distances that are given are approximate and should be checked by the client. The images are computer generated and are just an approximate indication of the real appearance of the property; these may change at any time. The information with regards to the property may also change at any time.

For **more information** or  
to make an appointment

[apropertiesvalencia@aproperties.es](mailto:apropertiesvalencia@aproperties.es)  
Tel: 96 128 59 65  
[www.aproperties.es](http://www.aproperties.es)