

Gran Vía, Valencia

REF. AV2206082



Penthouse with terrace for rent in Gran Vía (Valencia)

Features

- ✓ Views
- ✓ Heating
- ✓ AACC
- ✓ Terrace
- ✓ Lift
- ✓ Has parking

Price

3,700 €

Surface

179 m²

Bedrooms

4

Bathrooms

3



Next to the Gran Vía Marqués del Túria, in the best area of Eixample, is this current and impressive duplex penthouse of approximately 200m², on the fifth height of a modern building with a garage. The lower floor is distributed in a spacious living-dining room with access to a 30m² terrace, a fully equipped kitchen, a complete bathroom with a bathtub and a bedroom. Meanwhile, on the upper floor there are two bedrooms, a bathroom with shower and the master bedroom with a 15m² terrace and an en-suite bathroom with bathtub and shower. The apartment has high quality materials, parquet flooring, smooth walls and white lacquered carpentry give this design home a great luminosity. It has ducted air conditioning, natural gas heating and a large parking space. The location

of this penthouse is unbeatable, next to Reino de Valencia and Gran Vía Marqués del Turia, very close to the Antiguo Cauce del Río Túria. It has all the services, shops, supermarkets, schools, communication with public transport, etc. It is located in one of the best and most demanding areas of the city.

Contact us,
we will be happy to assist you,
to offer you more details and information.

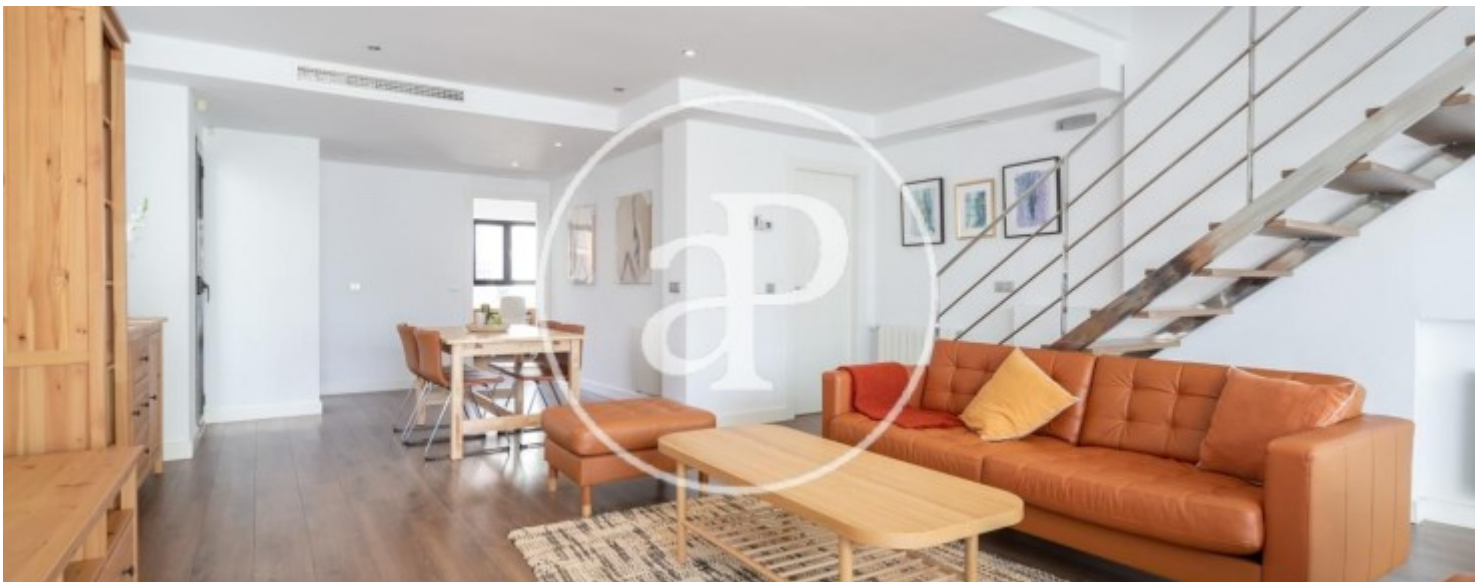
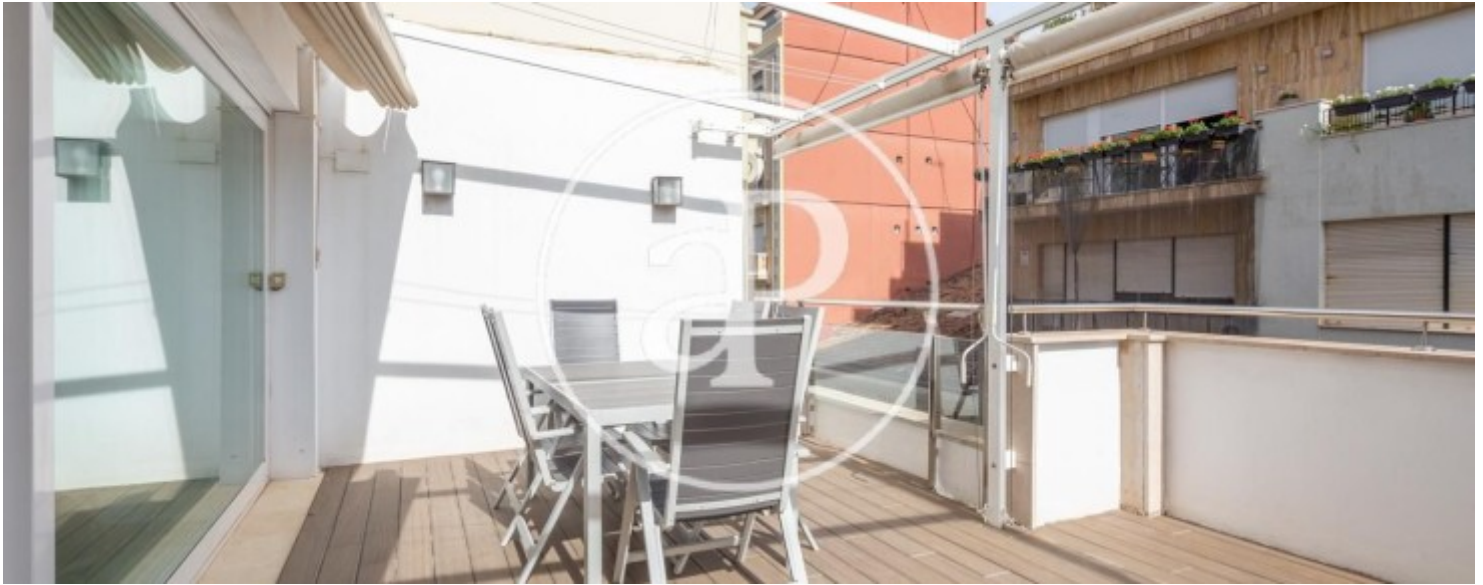


APROPERTIES
REAL ESTATE

Calle Mossen Femades 3, bajo dcha. Ed. Lauria
46002 Valencia
T. 96 128 59 65
www.aproperties.es

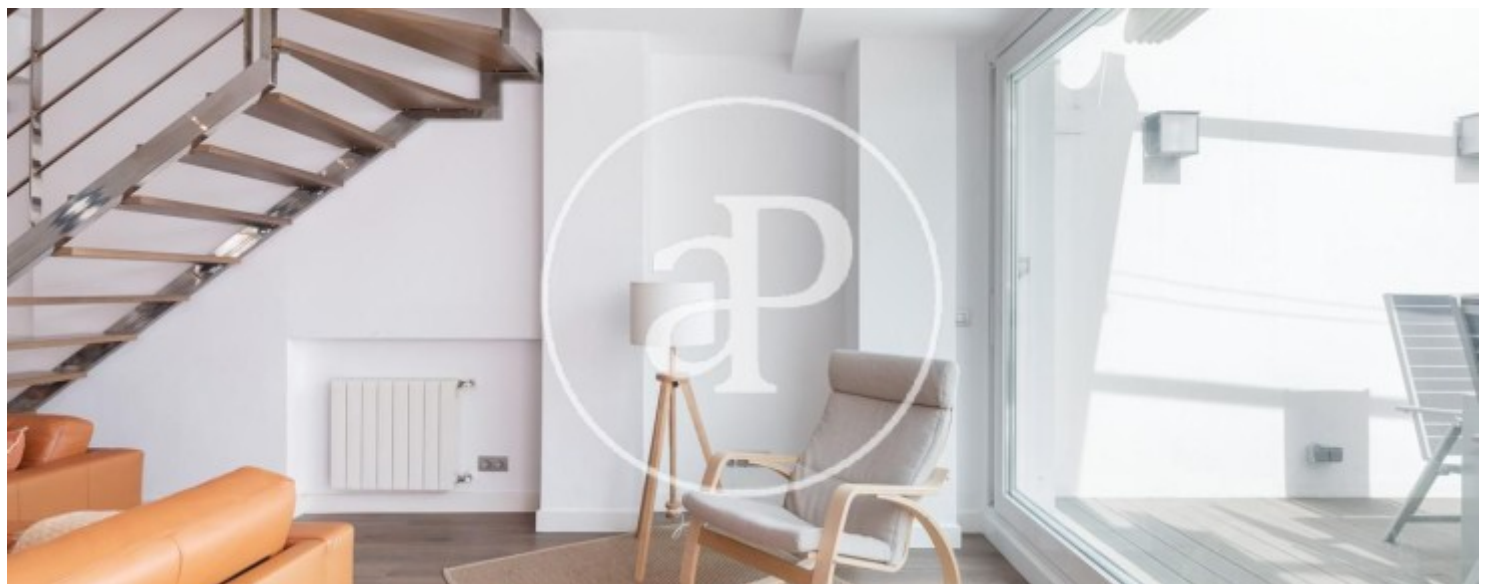
Gran Vía, Valencia

REF. AV2206082



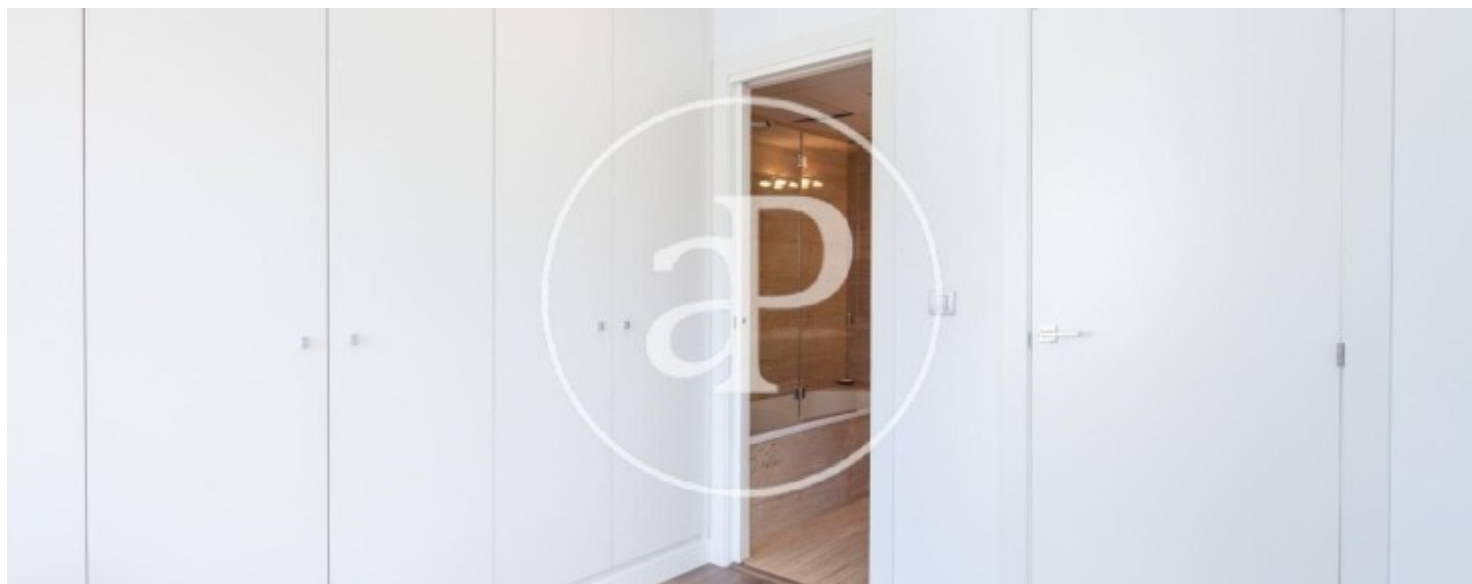
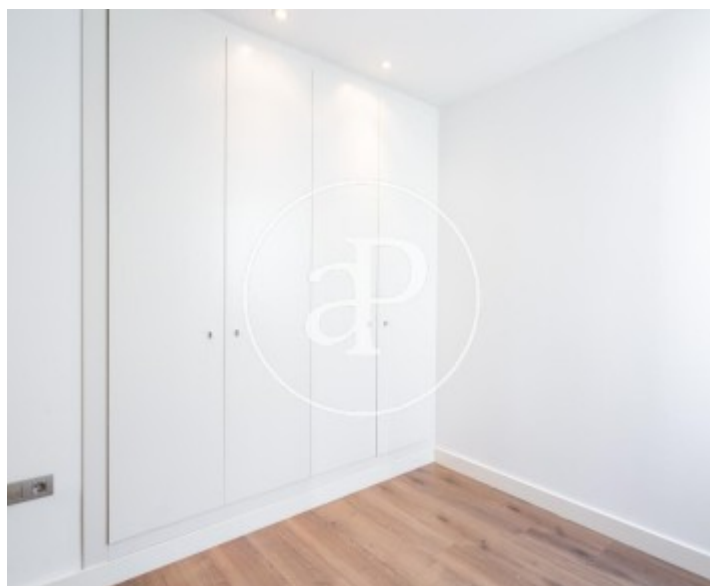
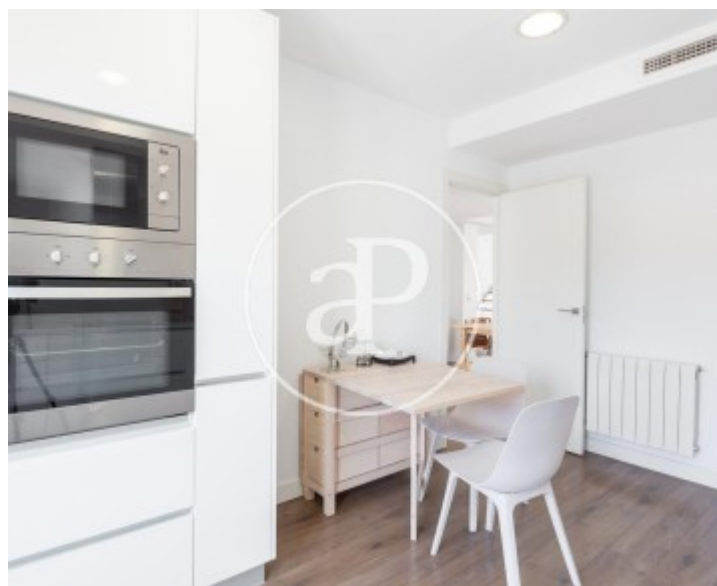
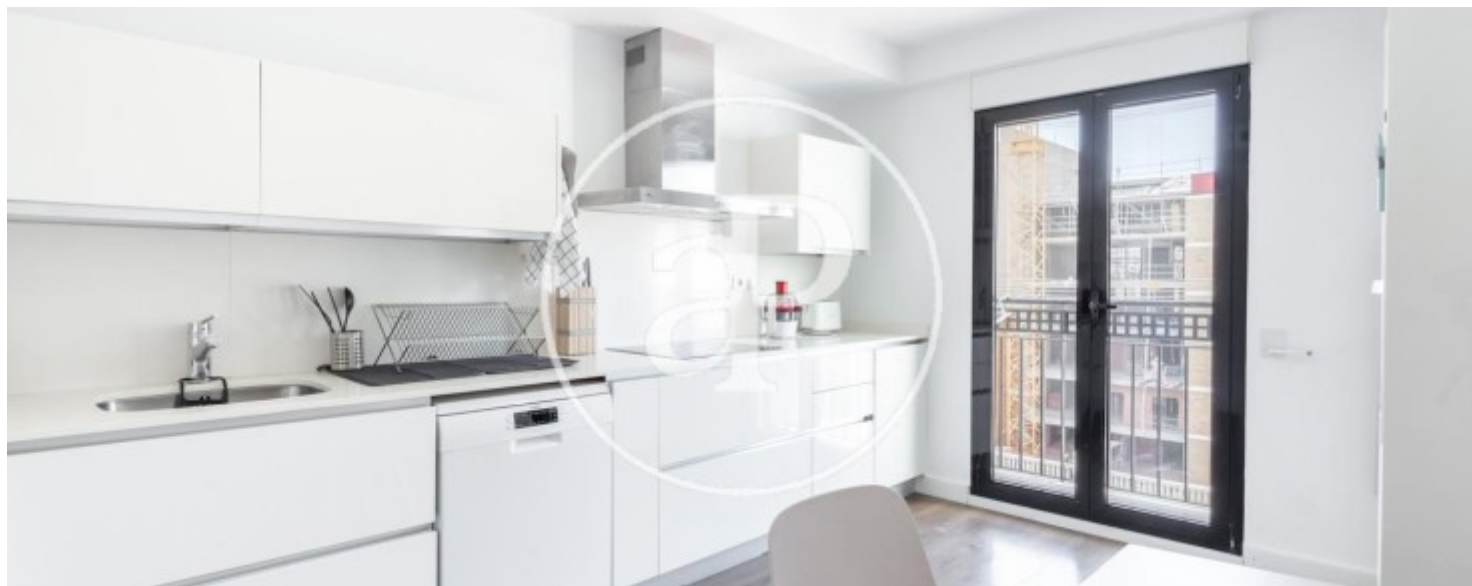
Gran Vía, Valencia

REF. AV2206082



Gran Vía, Valencia

REF. AV2206082



Gran Vía, Valencia

REF. AV2206082



The information about any property is not binding to any offer or contract. Any verbal or written declaration made by aProperties with regards to the value or condition of the property should not be considered accurate or factual. The pictures make reference to some parts of the property at the times that they were taken. The areas, dimensions and distances that are given are approximate and should be checked by the client. The images are computer generated and are just an approximate indication of the real appearance of the property; these may change at any time. The information with regards to the property may also change at any time.



For **more information** or
to make an appointment

apropertiesvalencia@aproperties.es
Tel: 96 128 59 65
www.aproperties.es