

Exposició, Valencia

REF. AV1911047



## Spectacular stately home in the Alameda area

### Features

- ✓ Views
- ✓ AACC
- ✓ Has parking
- ✓ Heating
- ✓ Lift

Price

**2,300 €**

Surface

**315 m<sup>2</sup>**

Plot surface

**315 m<sup>2</sup>**

Bedrooms

**3**

Bathrooms

**5**



**Two steps from the Paseo de la Alameda we find this stately home, with marble and parquet floors, unfurnished.**

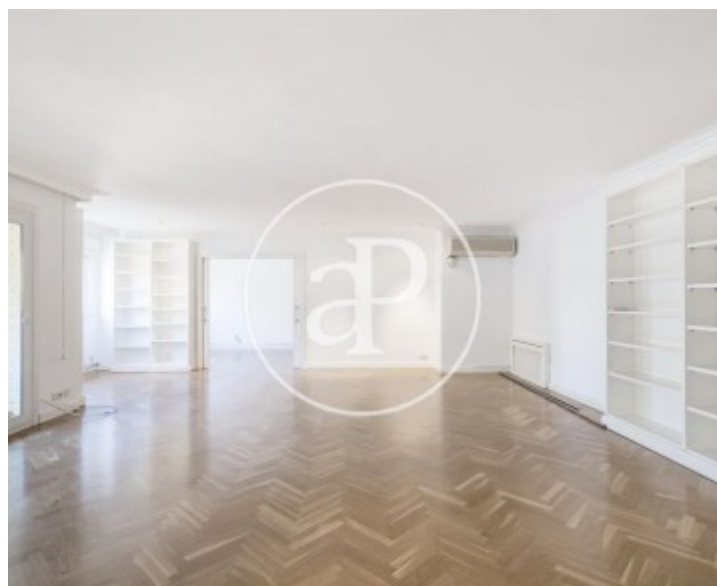
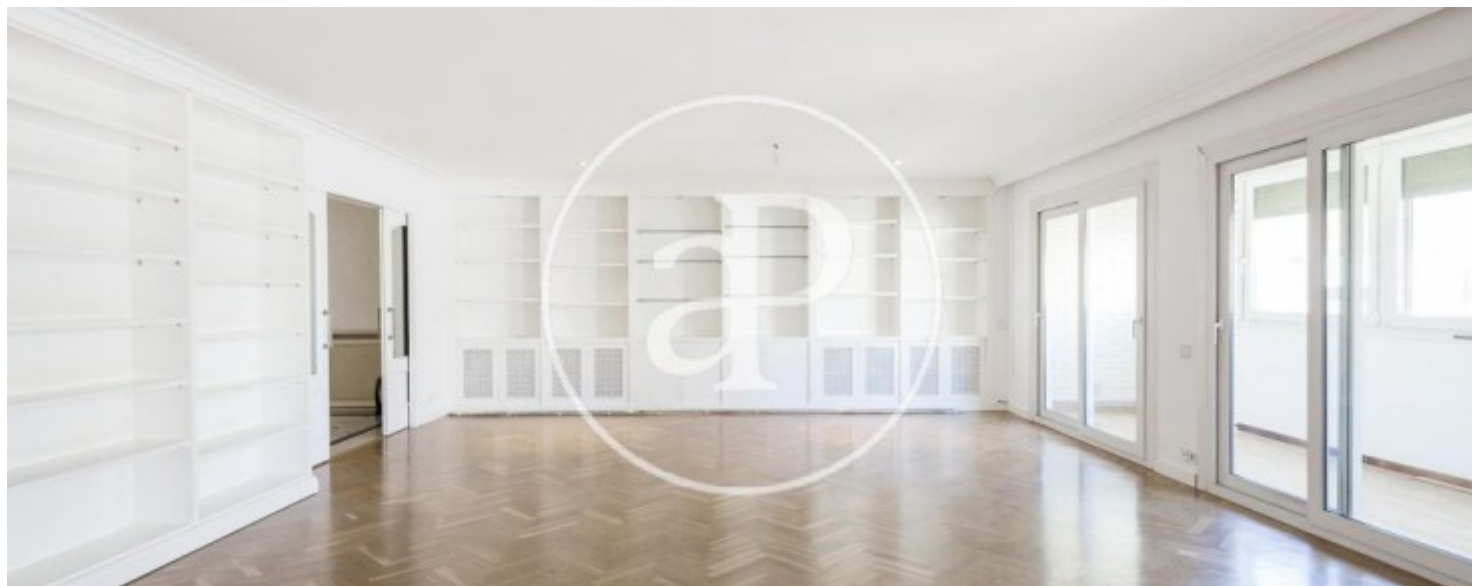
The location of this magnificent property is located in an excellent point between the Alameda and Blasco Ibañez, a few steps from art galleries, exclusive boutiques, the English Court, cinemas, EMT bus lines, Metro and just minutes walk from the street Colón and Xàtiva, the most commercial in Valencia, restaurants, all kinds of bars and entertainment venues. The house has two bedrooms with bathroom en suite and a master bedroom of 70 square meters with sauna and shower, all of stone, dressing room with fitted wardrobes and then the

bedroom itself, with its own bathroom with bathtub. In addition to a large living room with access to a comfortable independent balcony, fully air-conditioned, where you can enjoy your relaxing moments after a day of work. For your convenience, it has a large garage. It is a unique opportunity to live in the best area of Valencia two steps from downtown.

**Contact us,**  
we will be happy to assist you,  
to offer you more details and information.

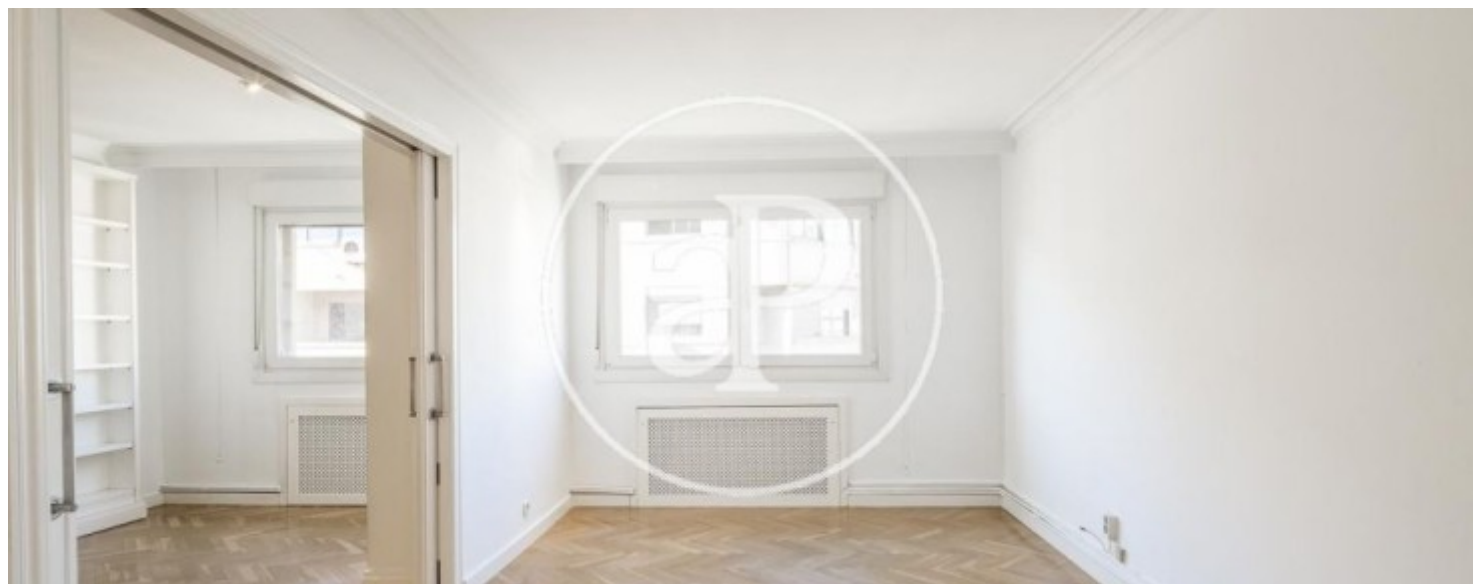
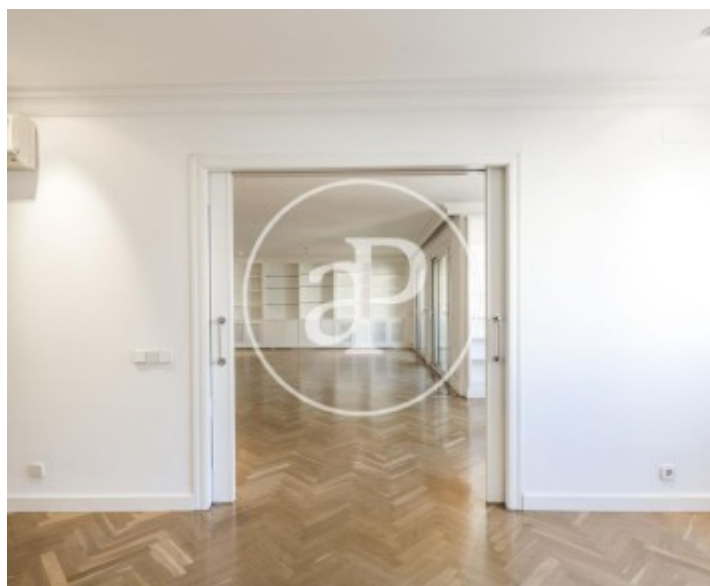
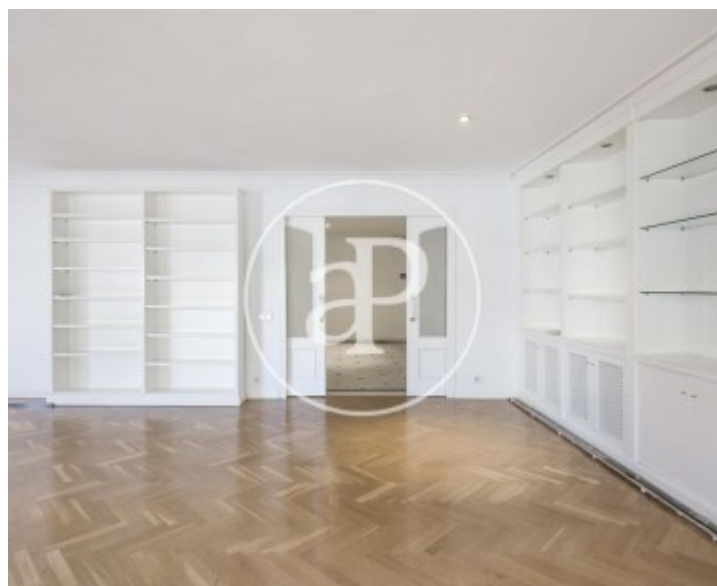
Exposició, Valencia

REF. AV1911047



Exposició, Valencia

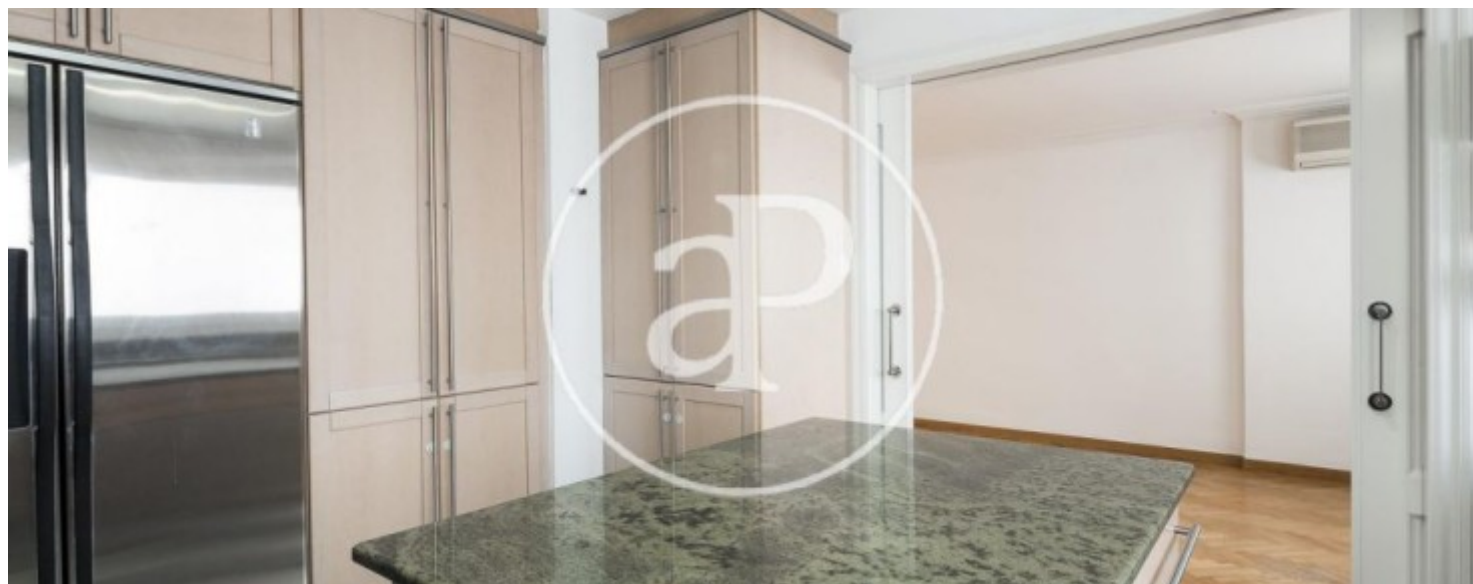
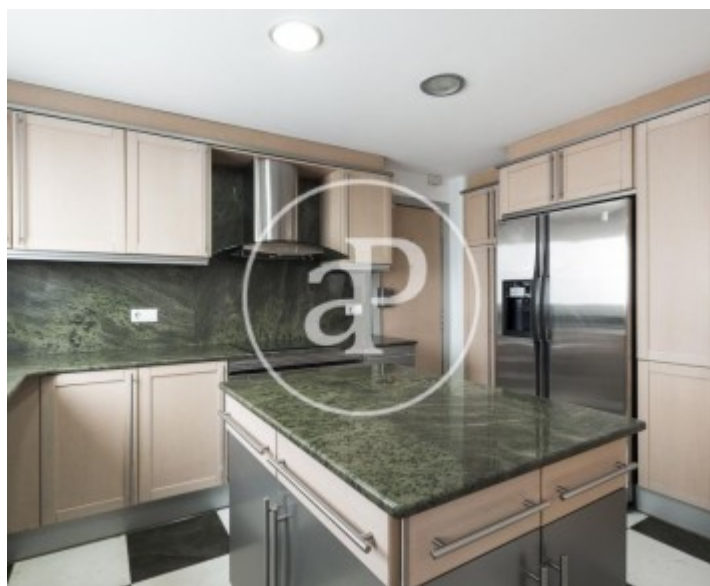
REF. AV1911047





Exposició, Valencia

REF. AV1911047





**APROPERTIES**  
REAL ESTATE

Calle Mossen Femades 3, bajo dcha. Ed. Lauria  
46002 Valencia  
T. 96 128 59 65  
[www.aproperties.es](http://www.aproperties.es)

Exposició, Valencia

REF. AV1911047



The information about any property is not binding to any offer or contract. Any verbal or written declaration made by aProperties with regards to the value or condition of the property should not be considered accurate or factual. The pictures make reference to some parts of the property at the times that they were taken. The areas, dimensions and distances that are given are approximate and should be checked by the client. The images are computer generated and are just an approximate indication of the real appearance of the property; these may change at any time. The information with regards to the property may also change at any time.



For **more information** or  
to make an appointment

[apropertiesvalencia@aproperties.es](mailto:apropertiesvalencia@aproperties.es)  
Tel: 96 128 59 65  
[www.aproperties.es](http://www.aproperties.es)