

Exposició, Valencia

REF. AV2002009



## Spacious flat for rent in Exposició (Valencia)

### Features

- ✓ Heating
- ✓ AACC
- ✓ Has parking
- ✓ Furnished
- ✓ Lift

Price

**975 €**

Surface

**84 m<sup>2</sup>**

Bedrooms

**3**

Bathrooms

**2**



**This beautiful apartment is located in Exhibition, a few meters from the Mestalla.**

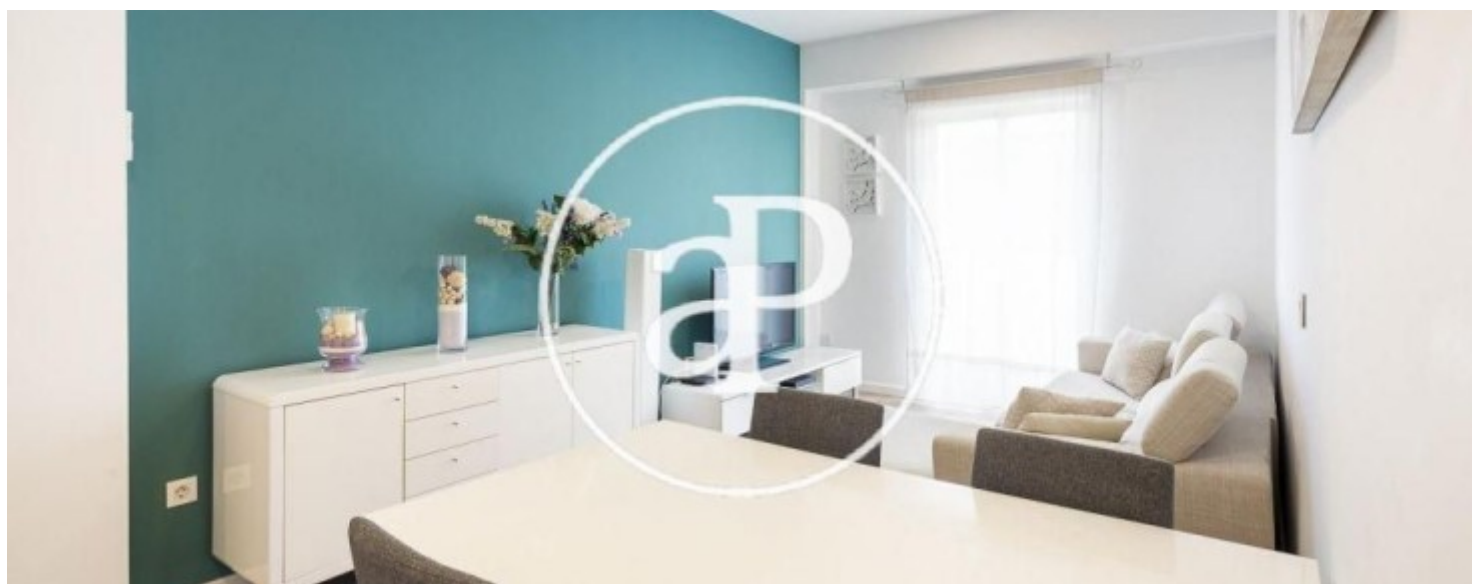
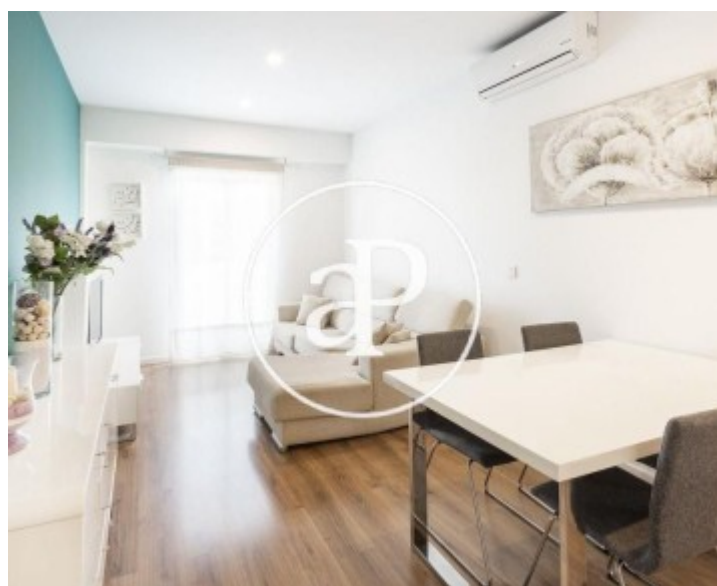
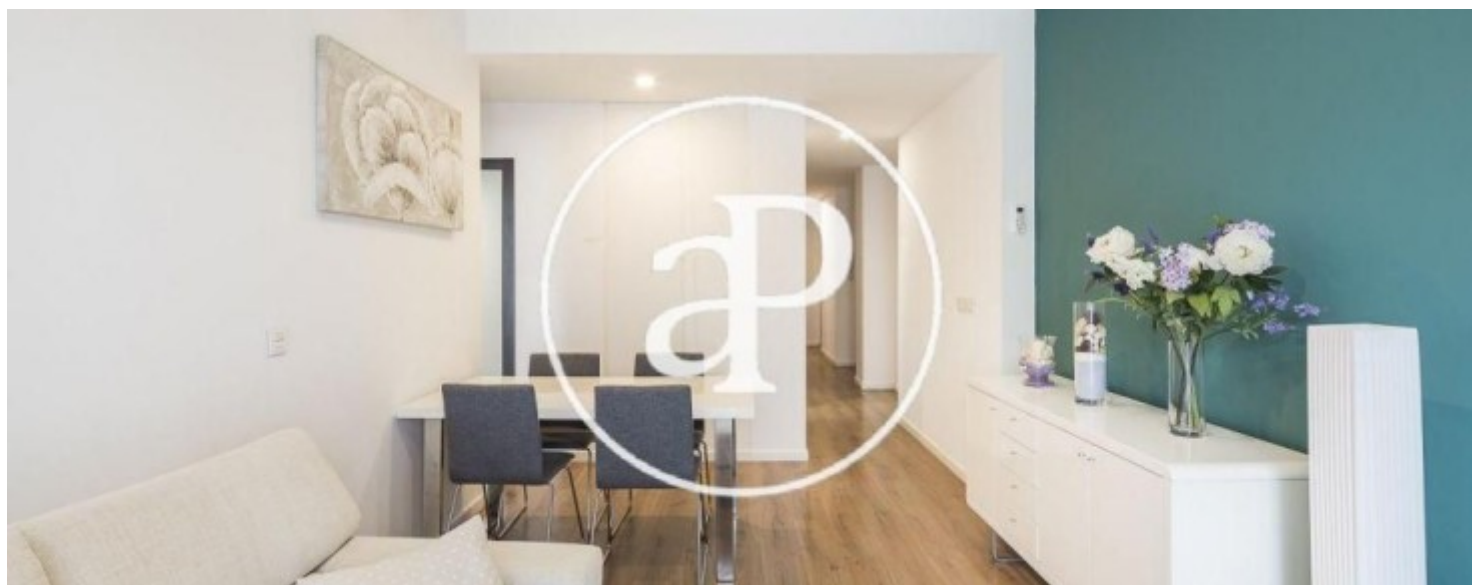
It is close to the Avd. De Aragón, the Turia riverbed, Alameda, Blasco Ibáñez, Tabacalera, Nursery Gardens, etc. A great location to live. The bright property has a charming hall, which communicates with one of the rooms and the corridor. In the hallway, we find a complete and renovated bathroom and another room. Both rooms with closets and windows. Next, we reach a bright and colorful living / dining room. The living room communicates with the modern and spacious fully equipped kitchen with a balcony of 6 square meters. Finally, we find the master bedroom with

full bathroom in Suite. Another important fact is that the work is made with top quality materials and the decoration is modern and colorful. This incredible property is located near schools, universities, pharmacies, supermarkets, shops, restaurants, entertainment venues, green areas, gym, etc. Also noteworthy is the good communication of public transport. OPTIONAL PARKING, € 105 more. POSSIBILITY UNFURNISHED, € 850 per month. Do not hesitate to contact us.

**Contact us,**  
we will be happy to assist you,  
to offer you more details and information.

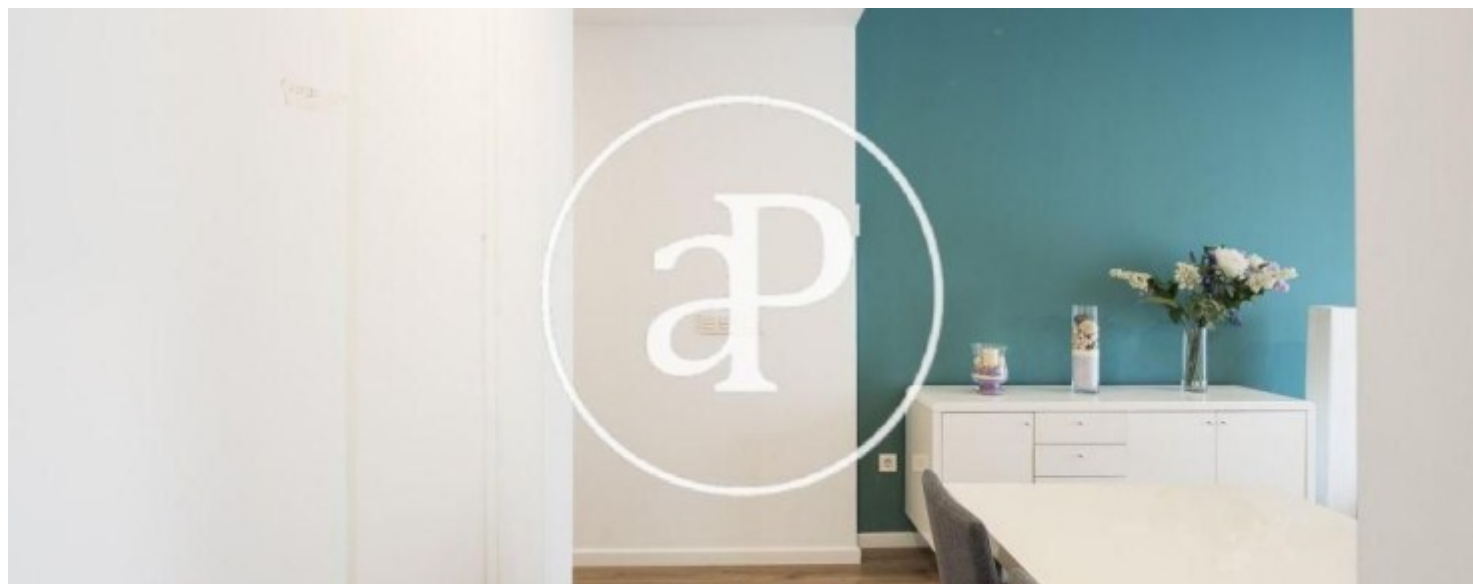
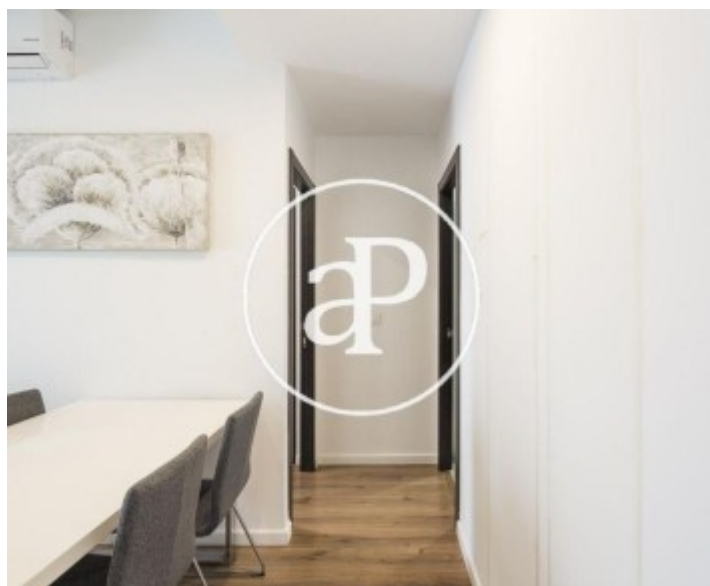
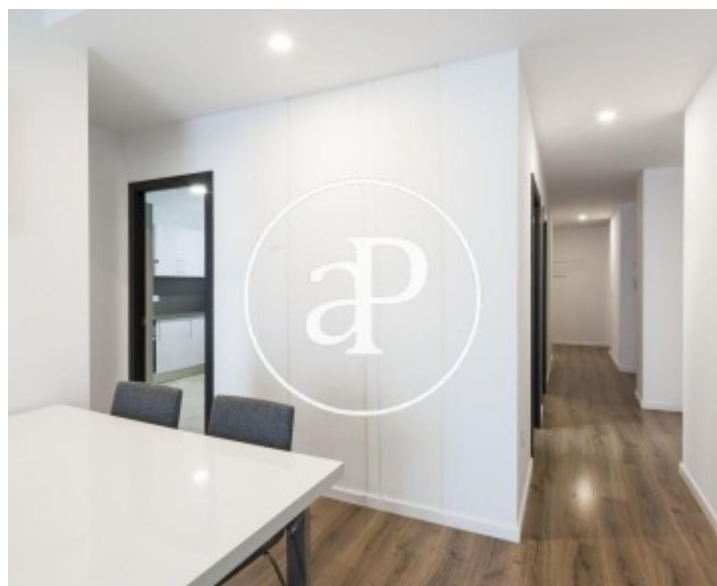
Exposició, Valencia

REF. AV2002009



Exposició, Valencia

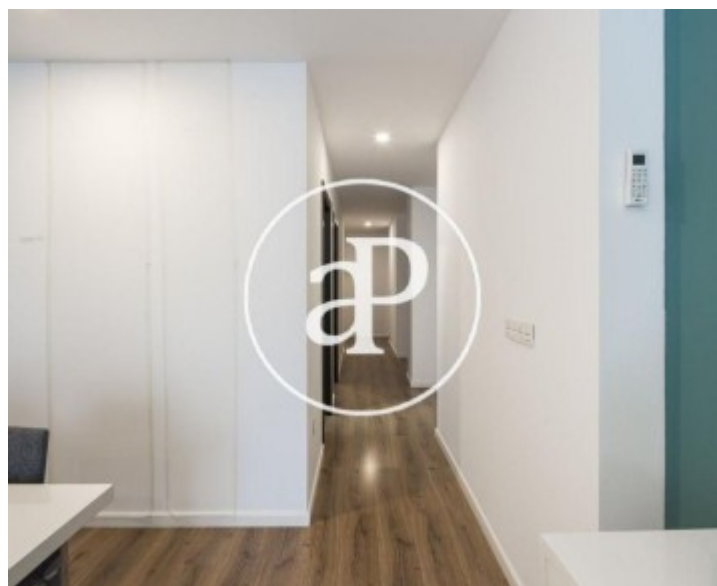
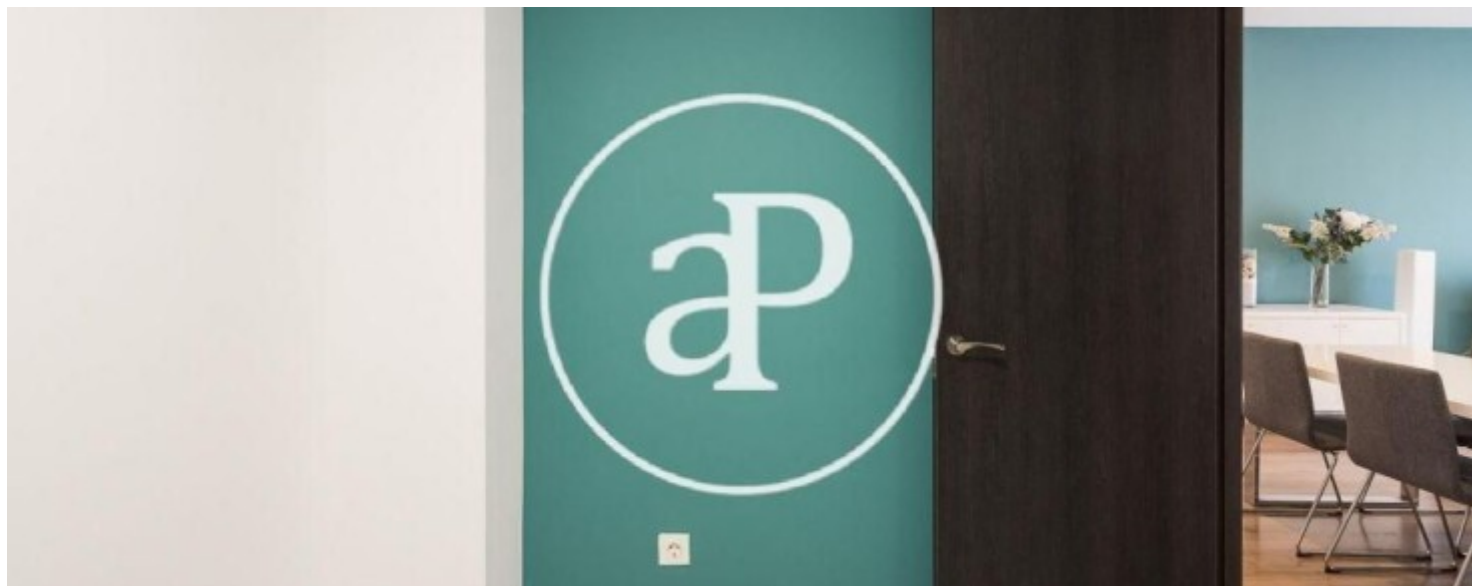
REF. AV2002009





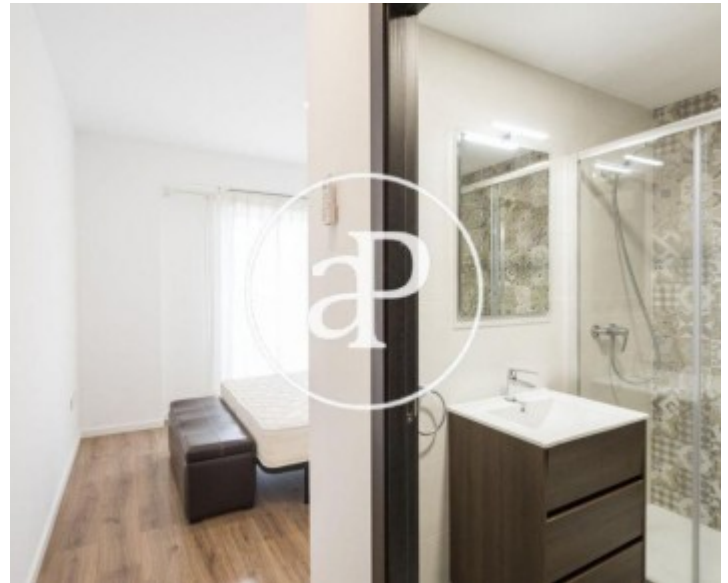
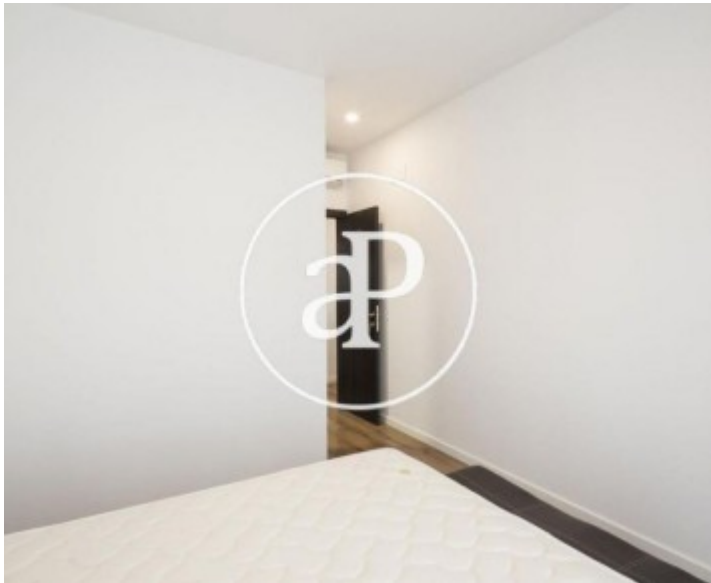
Exposició, Valencia

REF. AV2002009



Exposició, Valencia

REF. AV2002009



The information about any property is not binding to any offer or contract. Any verbal or written declaration made by aProperties with regards to the value or condition of the property should not be considered accurate or factual. The pictures make reference to some parts of the property at the times that they were taken. The areas, dimensions and distances that are given are approximate and should be checked by the client. The images are computer generated and are just an approximate indication of the real appearance of the property; these may change at any time. The information with regards to the property may also change at any time.



For **more information** or  
to make an appointment

[apropertiesvalencia@aproperties.es](mailto:apropertiesvalencia@aproperties.es)  
Tel: 96 128 59 65  
[www.aproperties.es](http://www.aproperties.es)