



La Seu, Valencia

REF. AV1906057

Exclusive flat with views for rent in La Seu (Valencia)

Features

- ✓ Views
- ✓ Heating
- ✓ Furnished
- ✓ Boxroom
- ✓ AACC
- ✓ Lift
- ✓ Has parking

Surface

93 m²

Bedrooms

2

Bathroom

1

Price

850 €



This wonderful property is located between Plaza de la Virgen and the River of Valencia.

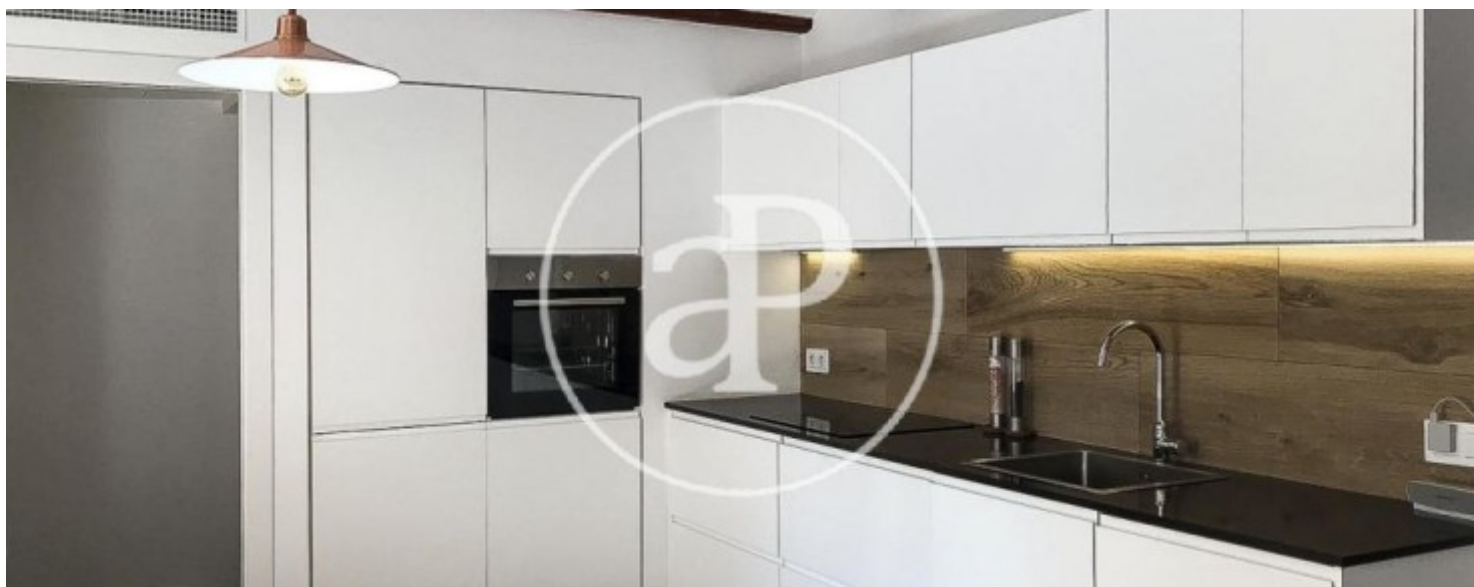
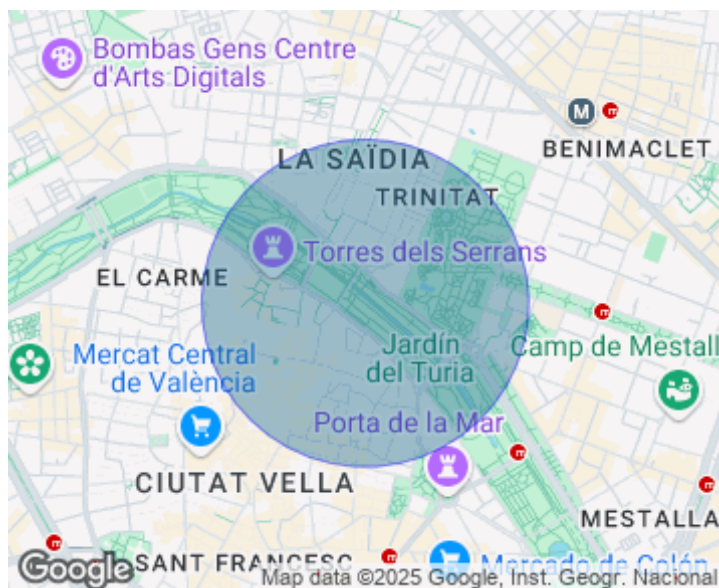
It is very close to the Cathedral of Valencia, Plaza de la Reina, Calle de la Paz, Colón street, Plaza Tetuán, Puerta de la Mar, Plaza del Ayuntamiento, etc., that is, in the heart of Valencia and in an area very exclusive. This luminous property has ninety-three square meters, distributed in two magnificent rooms, one of them double and one single, both with fitted wardrobes, an exquisite and spacious bathroom for two people with their respective toilets, a large and bright living room connected with the modern and beautiful kitchen, as it is open and a lovely

balcony where you can take the air. In addition, it has direct access from the forklift to the kitchen. The property was completely reformed in two thousand and sixteen with taste and with noble and high quality materials. Only one tenant has lived, so he is as good as new. It should also be noted that the beams are original, has air conditioning hot / cold, gas heating and parquet of a color esquisito. Another feature that makes it so exclusive to the property is that it has parking on the same property, for twenty euros per month and place for the motorcycle for fifteen euros per month, one...

Contact us,
we will be happy to assist you,
to offer you more details and information.

La Seu, Valencia

REF. AV1906057



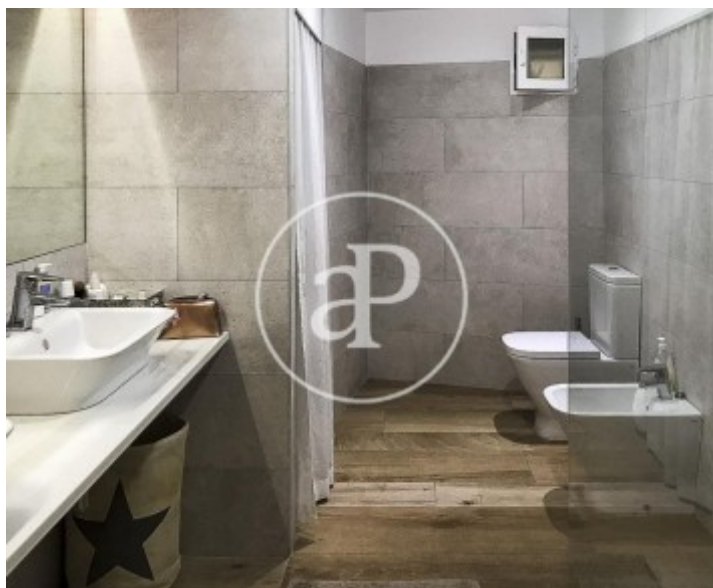
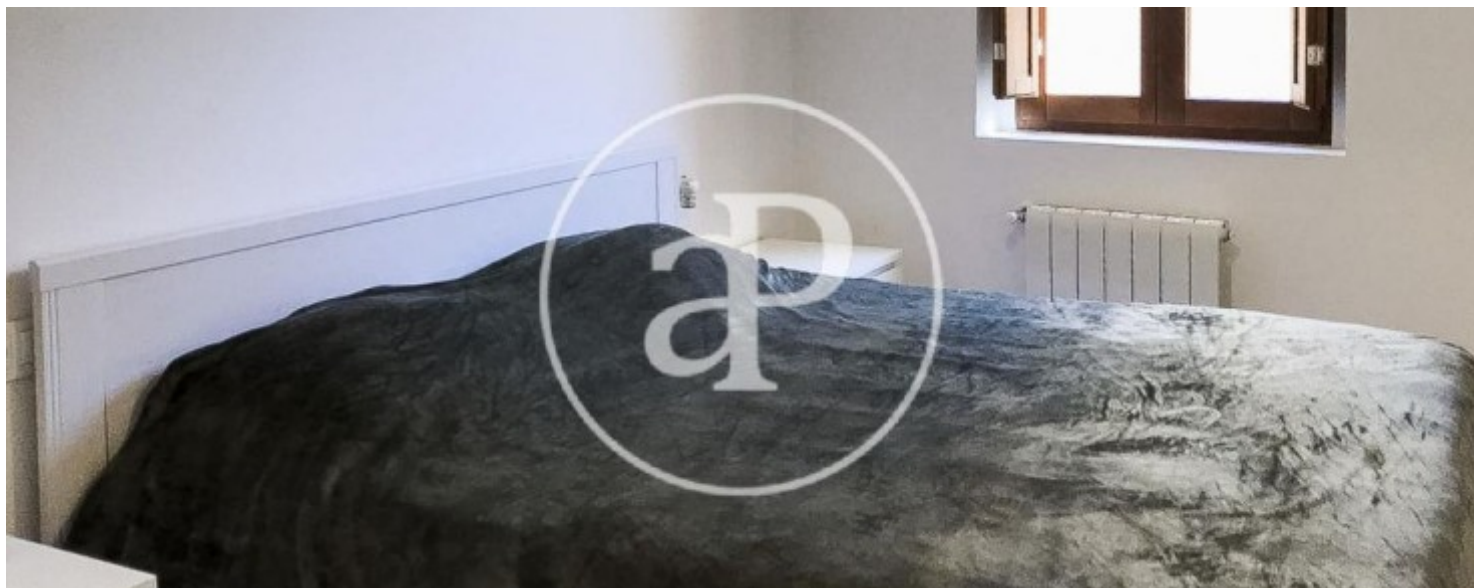
La Seu, Valencia

REF. AV1906057



La Seu, Valencia

REF. AV1906057



The information about any property is not binding to any offer or contract. Any verbal or written declaration made by aProperties with regards to the value or condition of the property should not be considered accurate or factual. The pictures make reference to some parts of the property at the times that they were taken. The areas, dimensions and distances that are given are approximate and should be checked by the client. The images are computer generated and are just an approximate indication of the real appearance of the property; these may change at any time. The information with regards to the property may also change at any time.

For **more information** or
to make an appointment

apropertiesvalencia@aproperties.es
Tel: 96 128 59 65
www.aproperties.es