

La Seu, Valencia

REF. VV2606022

# Flat for sale with Terrace in La Seu (Valencia)

## Features

- ✓ Views
- ✓ Heating
- ✓ Furnished
- ✓ AACC
- ✓ Terrace

Surface

**81 m<sup>2</sup>**

Bedrooms

**2**

Bathrooms

**2**

Price

**475,000 €**



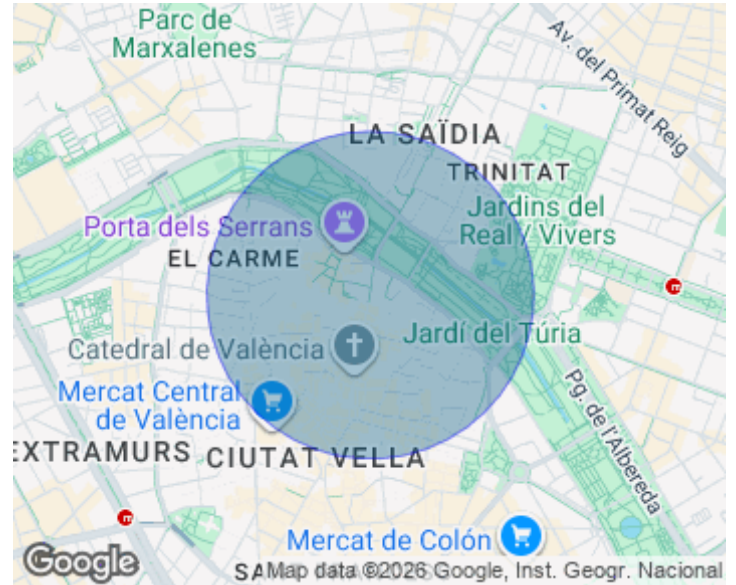
aProperties exclusively presents this magnificent home located in the heart of Valencia's Historic Centre, in one of the city's most exclusive and emblematic areas, boasting stunning open views of the Cathedral and El Miguelete. The property offers 80 sqm of built area, thoughtfully distributed into two spacious bedrooms, two full bathrooms, and a practical laundry or ironing room. It stands out for its abundant natural light and excellent use of space. Situated on the fourth floor of a building without a lift, the property features a continuous exterior balcony from which you can enjoy privileged views of Valencia's historic landmarks, making it one of its most remarkable features. The building also benefits from a communal rooftop terrace, ideal for enjoying the Mediterranean climate and

spectacular panoramic views over the rooftops and monuments of the historic centre. Its location is simply exceptional, surrounded by all amenities, shops, restaurants, and cultural attractions. It is just a short walk from Plaza de la Virgen, Valencia Cathedral, Plaza de la Reina, and the city's main points of interest. For further information, please do not hesitate to contact us. We will be delighted to assist you.

**Contact us,**  
we will be happy to assist you,  
to offer you more details and information.

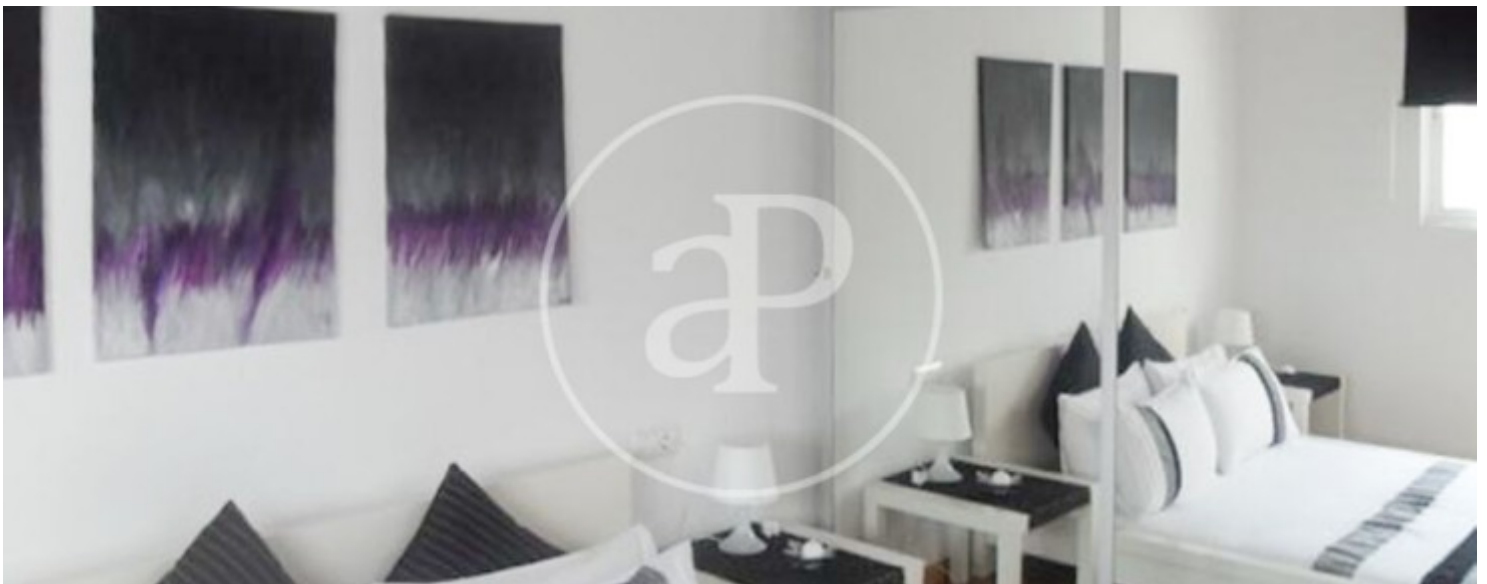
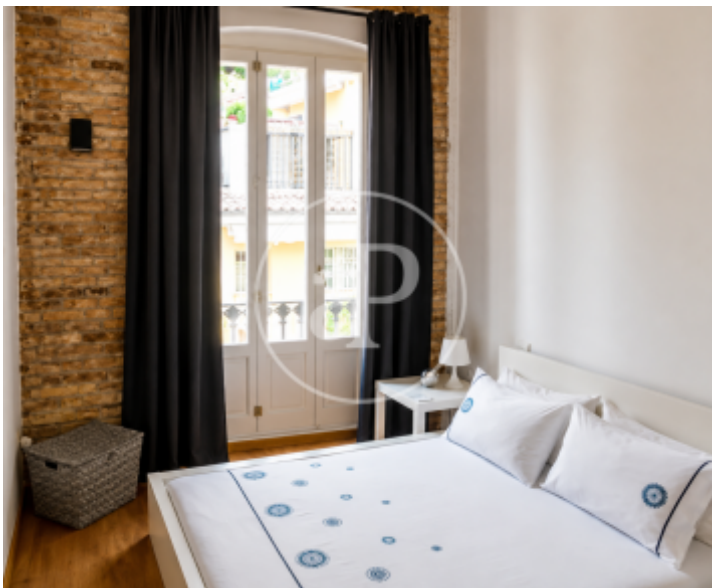
La Seu, Valencia

REF. VV2606022



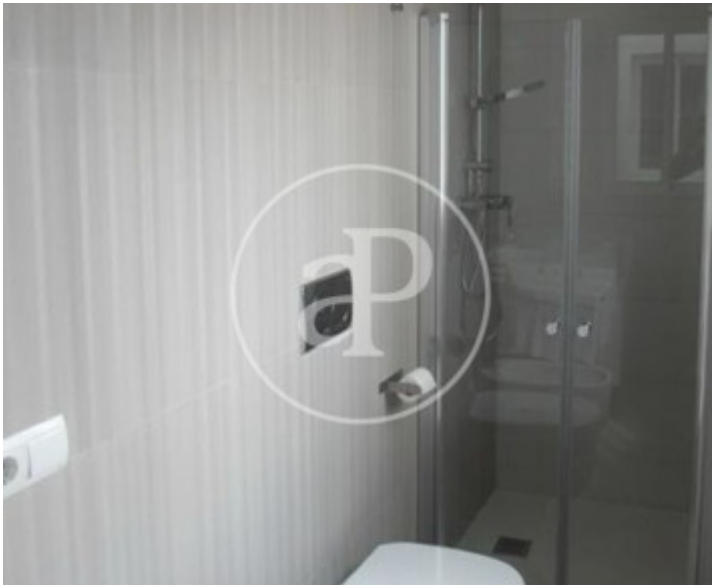
La Seu, Valencia

REF. VV2606022



La Seu, Valencia

REF. VV2606022



La Seu, Valencia

REF. VV2606022



The information about any property is not binding to any offer or contract. Any verbal or written declaration made by aProperties with regards to the value or condition of the property should not be considered accurate or factual. The pictures make reference to some parts of the property at the times that they were taken. The areas, dimensions and distances that are given are approximate and should be checked by the client. The images are computer generated and are just an approximate indication of the real appearance of the property; these may change at any time. The information with regards to the property may also change at any time.

For **more information** or  
to make an appointment

[apropertiesvalencia@aproperties.es](mailto:apropertiesvalencia@aproperties.es)  
Tel: 96 128 59 65  
[www.aproperties.es](http://www.aproperties.es)