

En Corts, Valencia

REF. AV1901058



Modern and spacious with terrace and completely renovated

Features

- ✓ Heating
- ✓ AACC
- ✓ Terrace
- ✓ Lift

Price

800 €

Surface

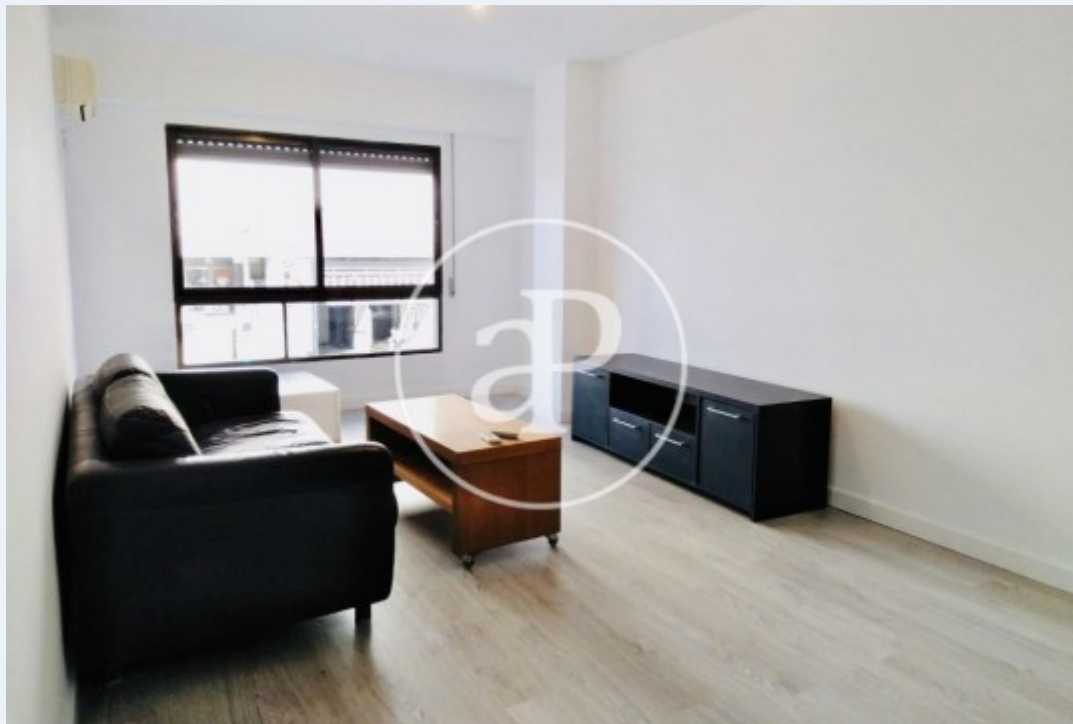
114 m²

Bedrooms

3

Bathrooms

2



Just steps away from the new Central Park and minutes away from the fashionable Ruzafa neighborhood, is this comfortable and bright newly renovated apartment of 110 m2, partially furnished.

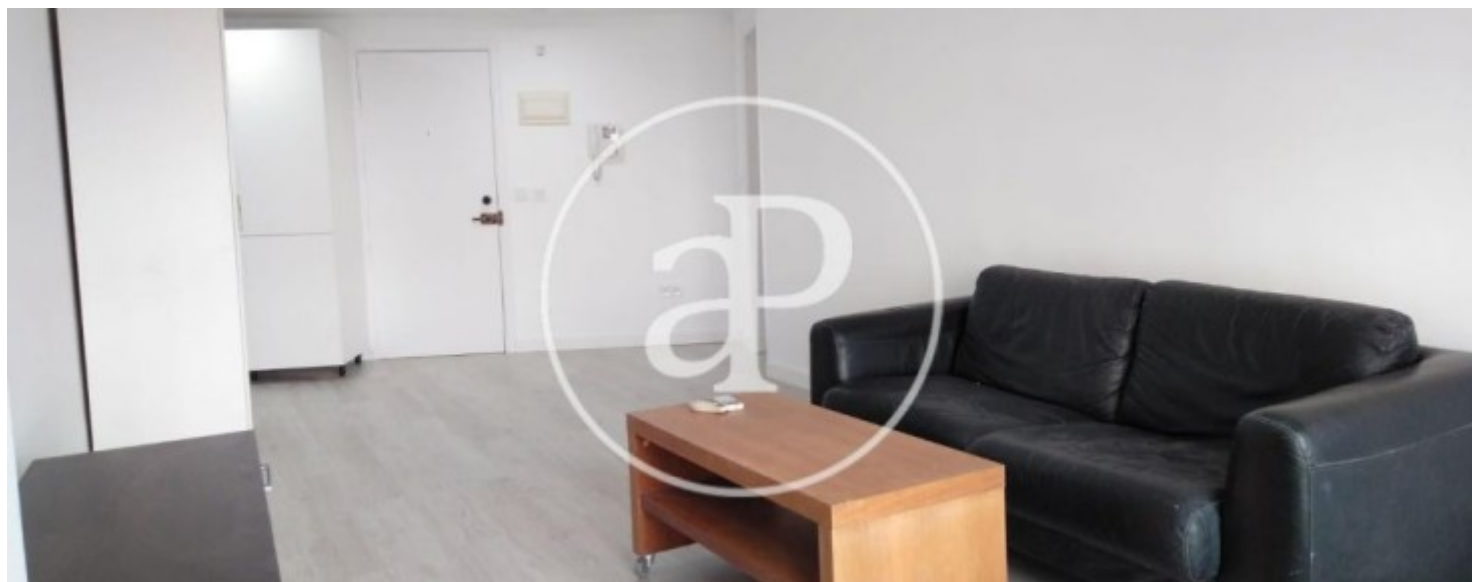
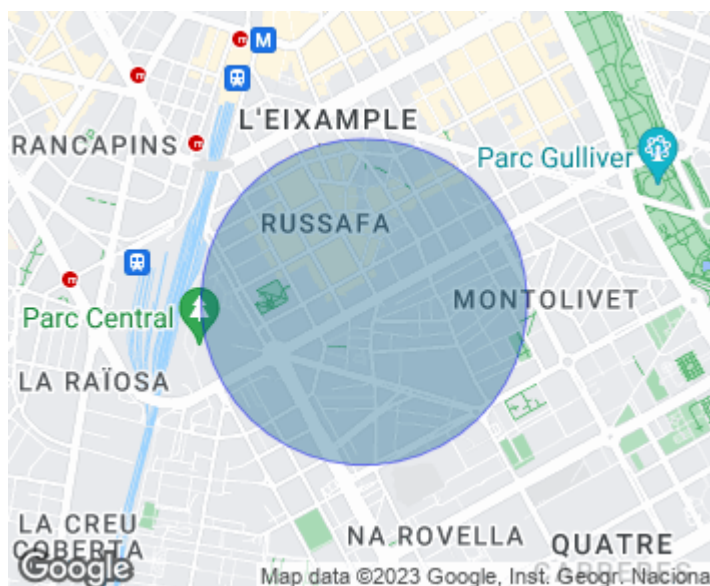
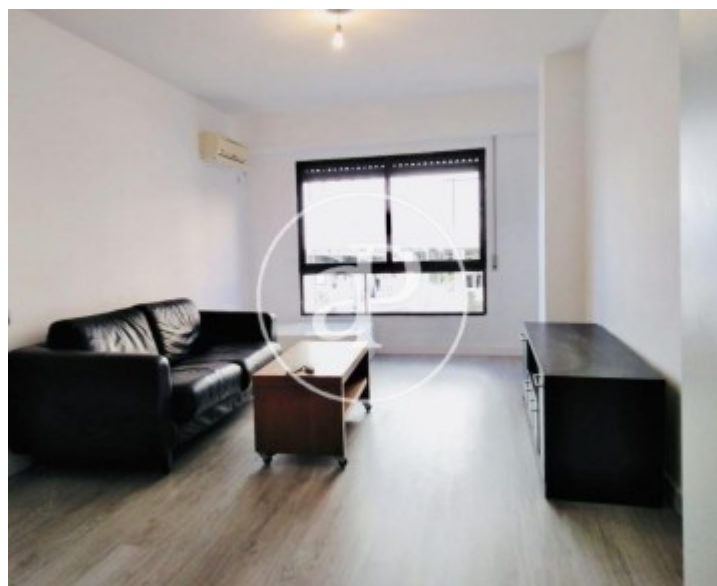
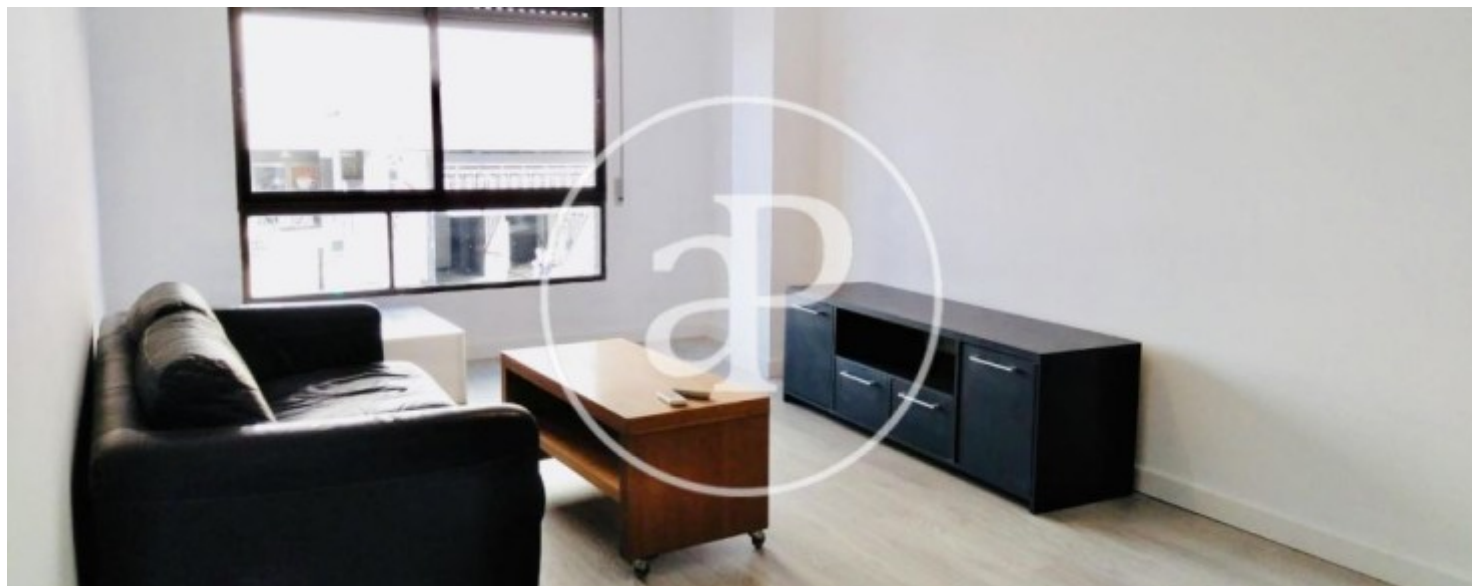
The property has 3 bedrooms, of which one is ideal for an office or study, and two full bathrooms of which one is en suite. The house is located on a 1st floor with elevator, with parquet floors, Windows Climalit, air conditioning SPLIT F / C and fully equipped and independent kitchen with access to comfortable Gallery / terrace. Its living room-dining room is very spacious and bright ideal to relax and share pleasant moments with family, friends or rest after your work day.

This charming house is also very well located, on Avenida Doctor Waksman, very close to Ruzafa and a step away from the city center. A few meters away you will find supermarkets, hotels, restaurants and gyms. Strategically located for easy access both exit and entrance to the city. Next to the New Hospital La Fe, excellent communication by V30 and south round. Community and IBI expenses are included. 2 Months of deposit are required. Contact us, we will be happy to assist you.

Contact us,
we will be happy to assist you,
to offer you more details and information.

En Corts, Valencia

REF. AV1901058



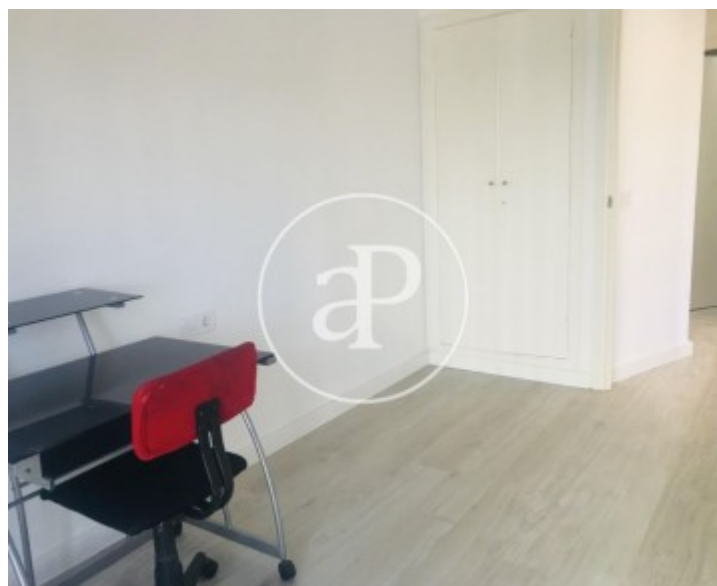
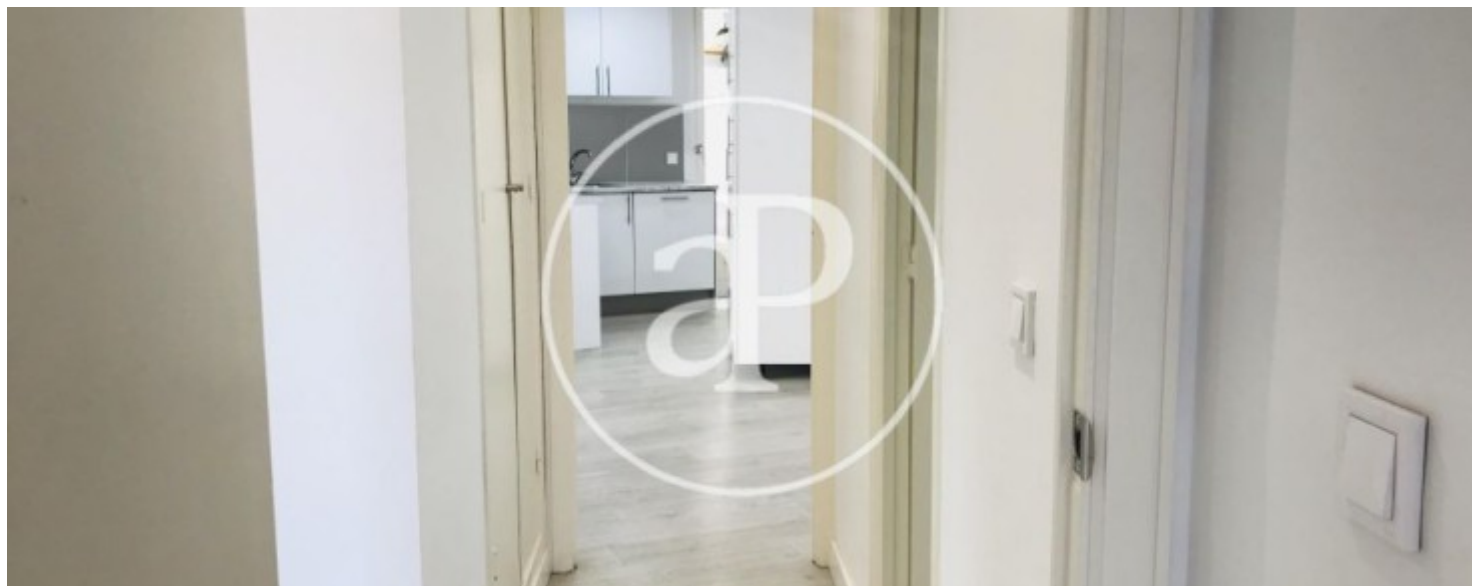
En Corts, Valencia

REF. AV1901058



En Corts, Valencia

REF. AV1901058



En Corts, Valencia

REF. AV1901058



The information about any property is not binding to any offer or contract. Any verbal or written declaration made by aProperties with regards to the value or condition of the property should not be considered accurate or factual. The pictures make reference to some parts of the property at the times that they were taken. The areas, dimensions and distances that are given are approximate and should be checked by the client. The images are computer generated and are just an approximate indication of the real appearance of the property; these may change at any time. The information with regards to the property may also change at any time.



For **more information** or
to make an appointment

apropertiesvalencia@aproperties.es
Tel: 96 128 59 65
www.aproperties.es