

El Mercat, Valencia

REF. VV1804020-1



Great opportunity to live in the center of Valencia

Features

Surface

200 m²

Bedrooms

5

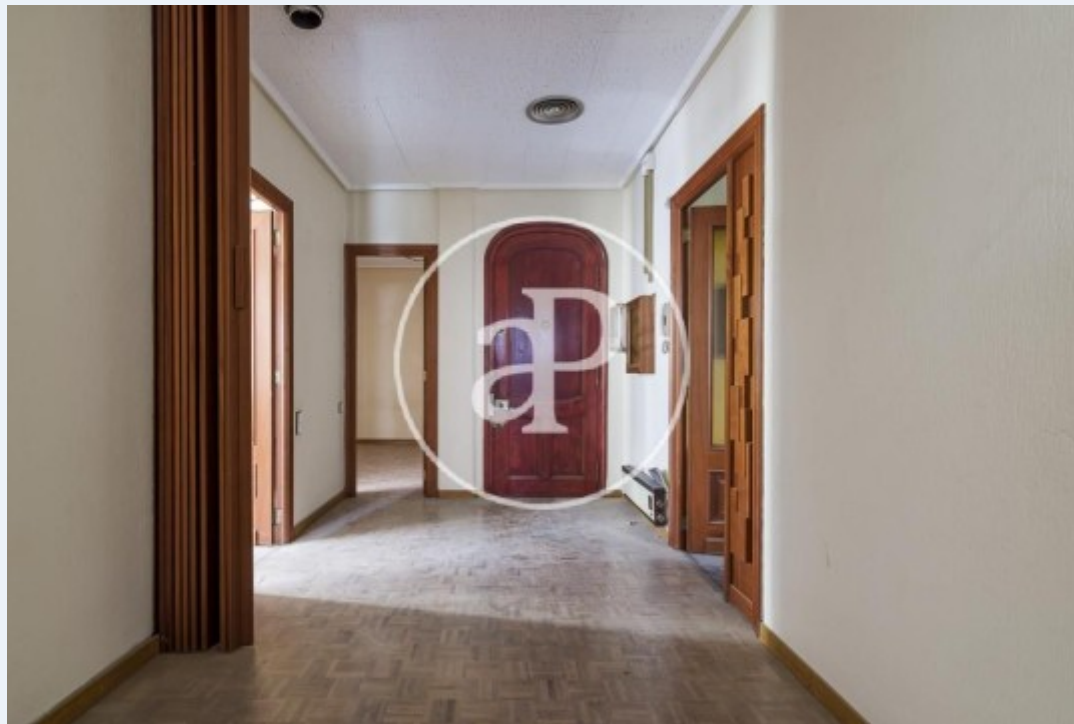
Bathrooms

2

✓ Views ✓ Lift

Price

650,000 €



In a prime location, the heart of Valencia and next to the great central market and the market of Valencia, we find this unique property.

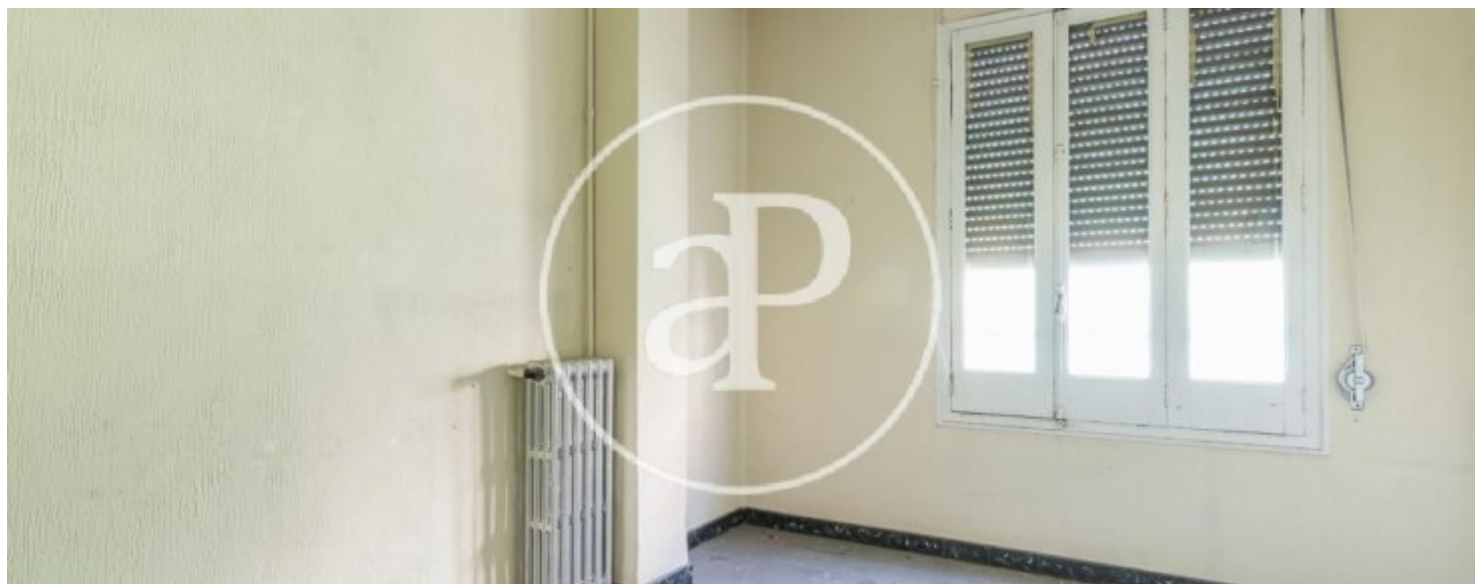
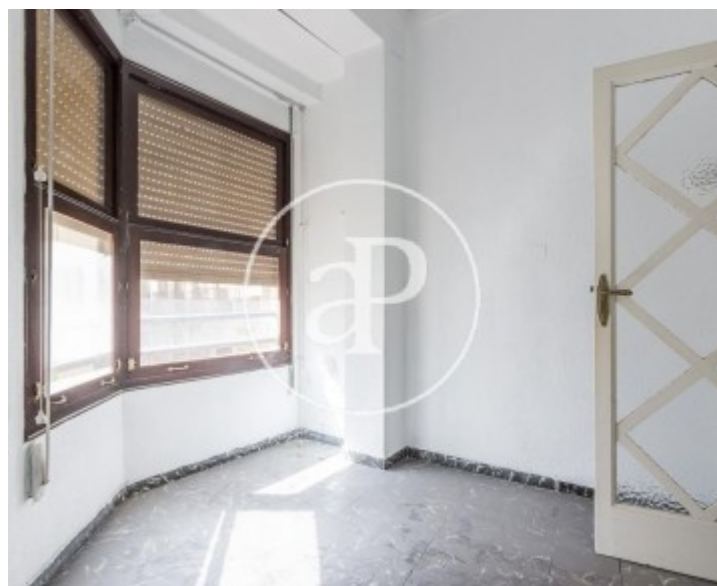
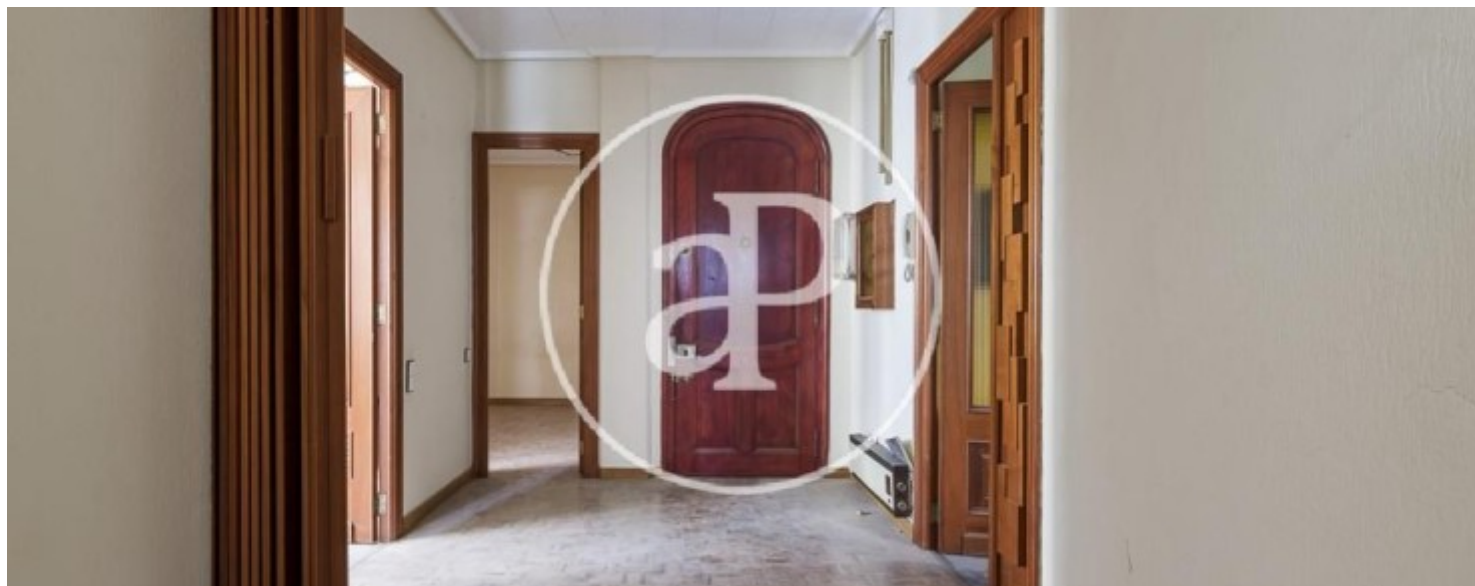
From the third floor of the Campos-Calvet building, the work of the great Valencian architect Francisco Javier Goerlich, we find this spacious house of 200 m² that occupies the entire plant. With an unbeatable distribution, with two well differentiated areas, separated by a large hall-distributor. In the part of the right, we would find the day area, with large windows; bringing a lot of light to it. In the part of the left the zone of night is located, composed by the wide kitchen, five rooms of different dimensions and a

bathroom. The house needs a previous reform, but the location, the building and the characteristics of the same, make it possible to have a luxury home in the heart of the city on demand. The building in which it is located is the work of Francisco Javier Goerlich, one of the most decisive architects in shaping the profile of the city of Valencia, both for the large number of works carried out and for his position as municipal architect and major architect. Responsible for works such as the Abastos market and the design of Avda. Barón de Carcer; but without doubt the building of the...

Contact us,
we will be happy to assist you,
to offer you more details and information.

El Mercat, Valencia

REF. VV1804020-1



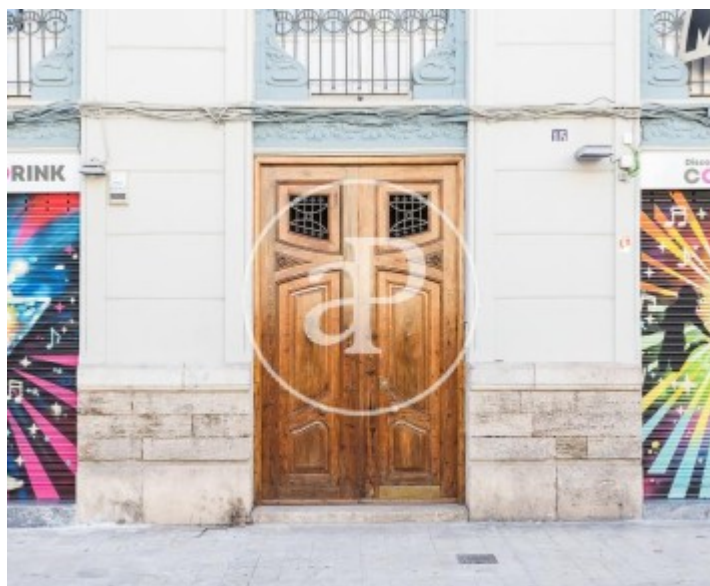
El Mercat, Valencia

REF. VV1804020-1



El Mercat, Valencia

REF. VV1804020-1





APROPERTIES
REAL ESTATE

Calle Mossen Femades 3, bajo dcha. Ed. Lauria
46002 Valencia
T. 96 128 59 65
www.aproperties.es

El Mercat, Valencia

REF. VV1804020-1



The information about any property is not binding to any offer or contract. Any verbal or written declaration made by aProperties with regards to the value or condition of the property should not be considered accurate or factual. The pictures make reference to some parts of the property at the times that they were taken. The areas, dimensions and distances that are given are approximate and should be checked by the client. The images are computer generated and are just an approximate indication of the real appearance of the property; these may change at any time. The information with regards to the property may also change at any time.



For **more information** or
to make an appointment

apropertiesvalencia@aproperties.es
Tel: 96 128 59 65
www.aproperties.es