



El Mercat, Valencia

REF. VV2406035

Great opportunity to live in the center of Valencia

Features

Surface

200 m²

Bedrooms

5

Bathrooms

2

- ✓ Views
- ✓ Heating
- ✓ Lift

Price

650,000 €



In a privileged enclave, in the heart of Valencia and next to the Central Market and the Valencia Market, we find this unique property.

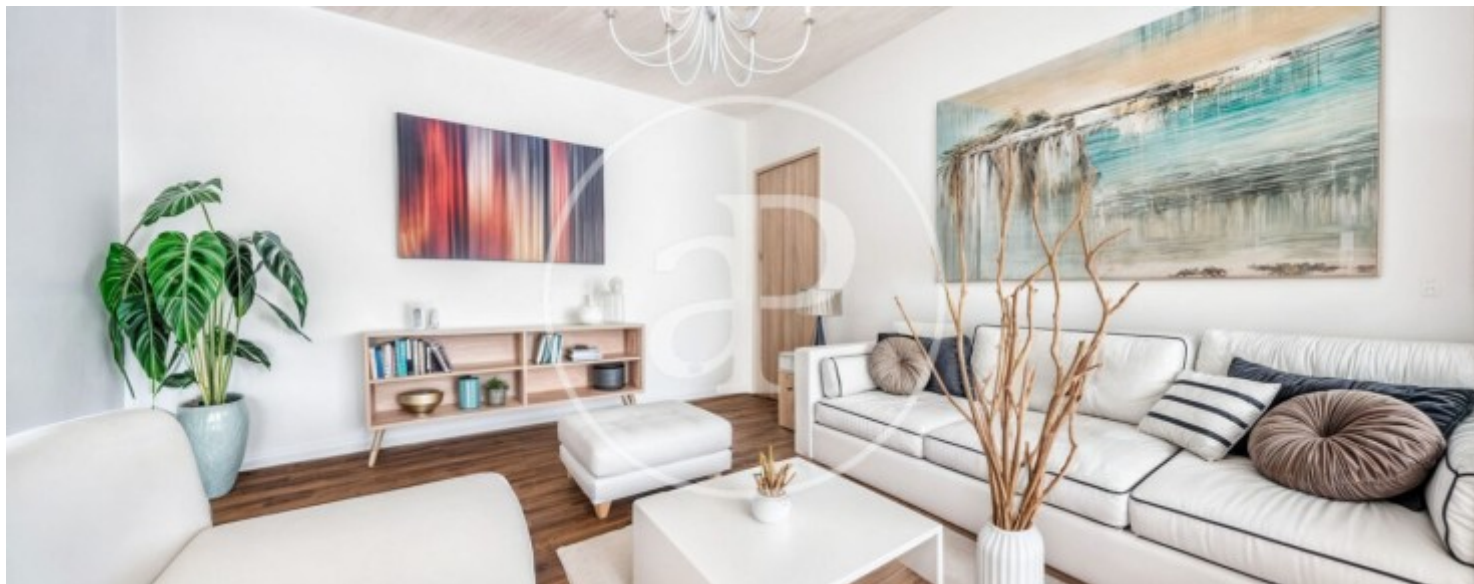
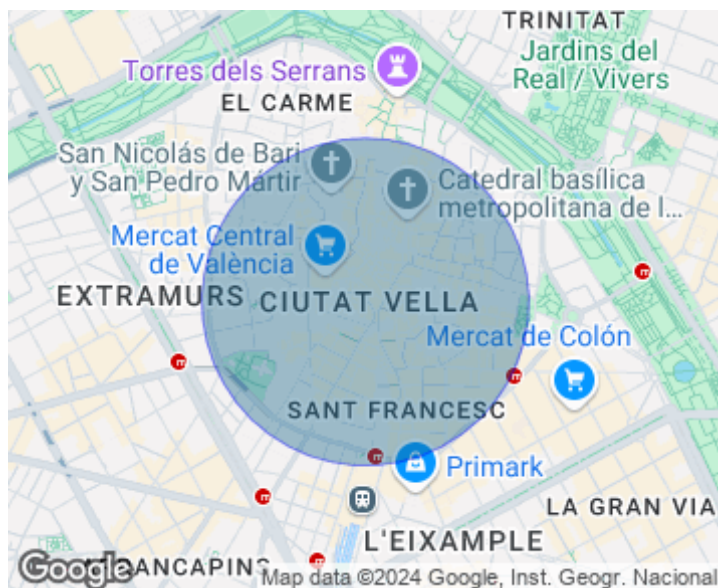
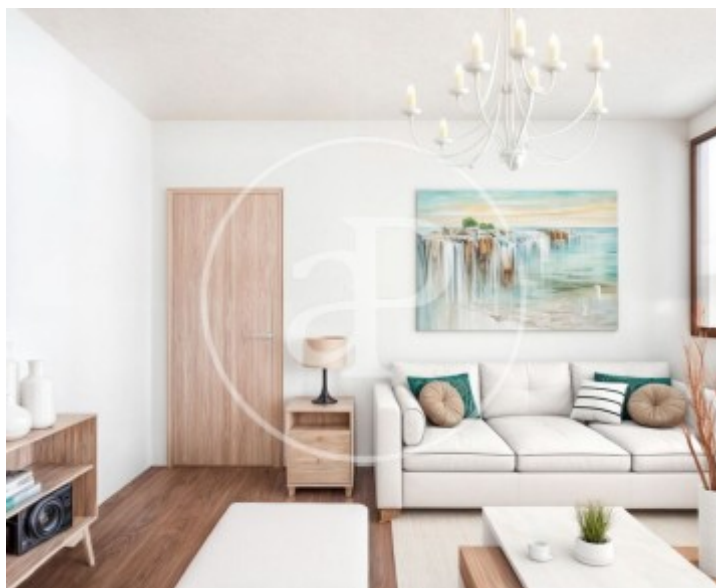
From the third floor of the Campos-Calvet building, the work of the great Valencian architect Francisco Javier Goerlich, we find this spacious 200 m² home that occupies the entire floor. With an unbeatable distribution, with two well-differentiated areas, separated by a large hall-distributor. On the right side, we would find the day area, with large windows, providing a lot of light to it. On the left side is the night area, made up of the large kitchen, five bedrooms of different sizes and a bathroom. The house needs a previous

renovation, but the location, the building and its characteristics mean that you can have a luxury home in the heart of the city on demand. The building in which it is located is the work of Francisco Javier Goerlich, one of the most decisive architects in the formation of the profile of the city of Valencia, both for the large number of works carried out and for his position as municipal architect and senior architect. Responsible for works such as the Abastos market and the design of Barón de Carcer Avenue; but without a doubt the Banco de Valencia building on Barcas Street is his...

Contact us,
we will be happy to assist you,
to offer you more details and information.

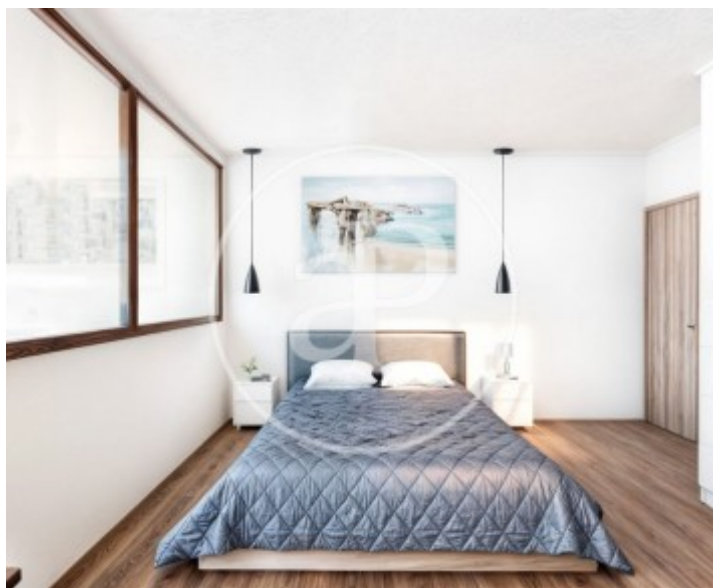
El Mercat, Valencia

REF. VV2406035



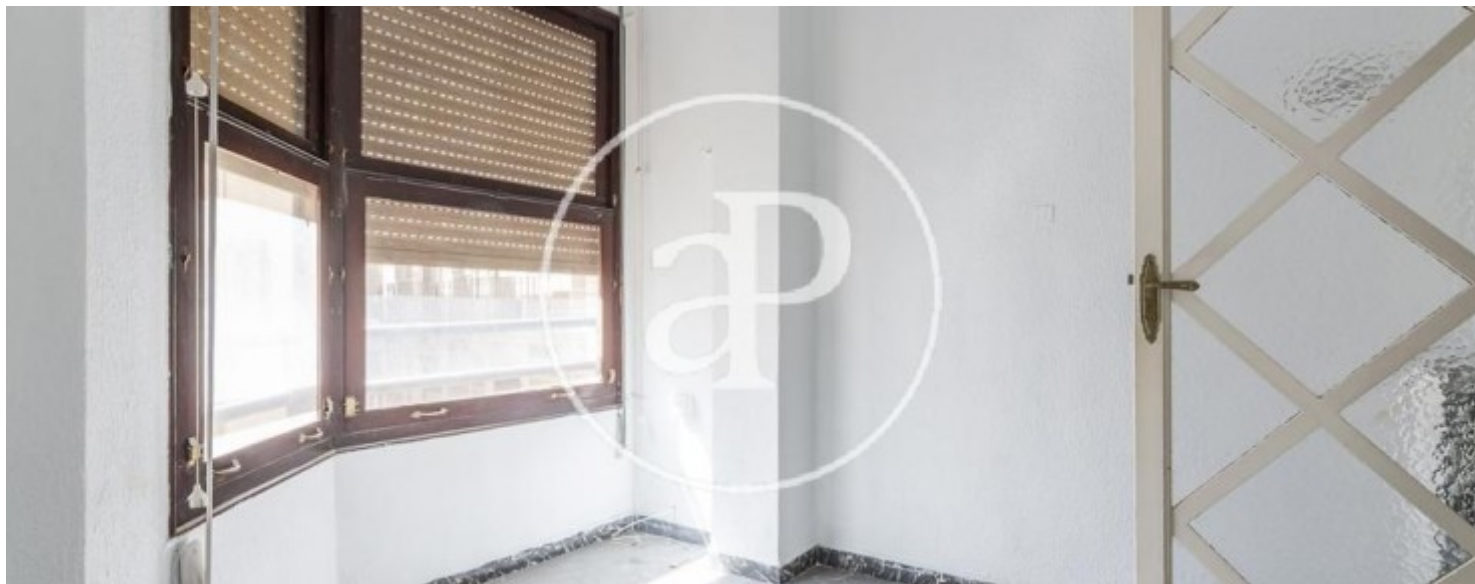
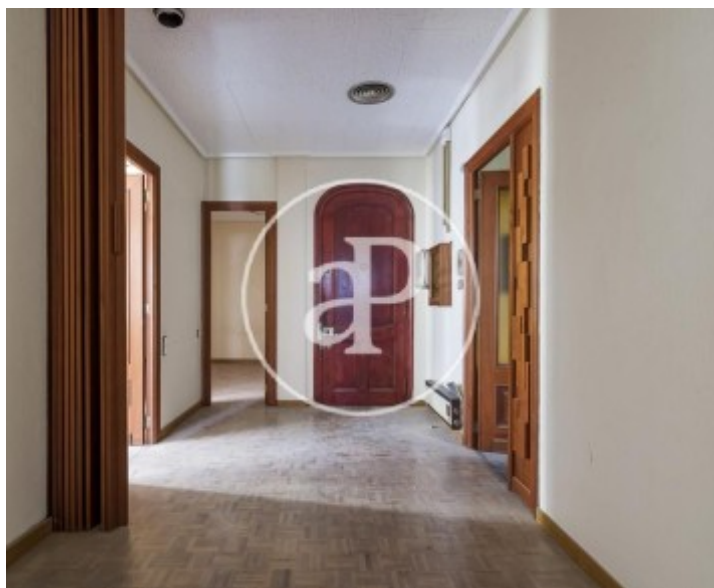
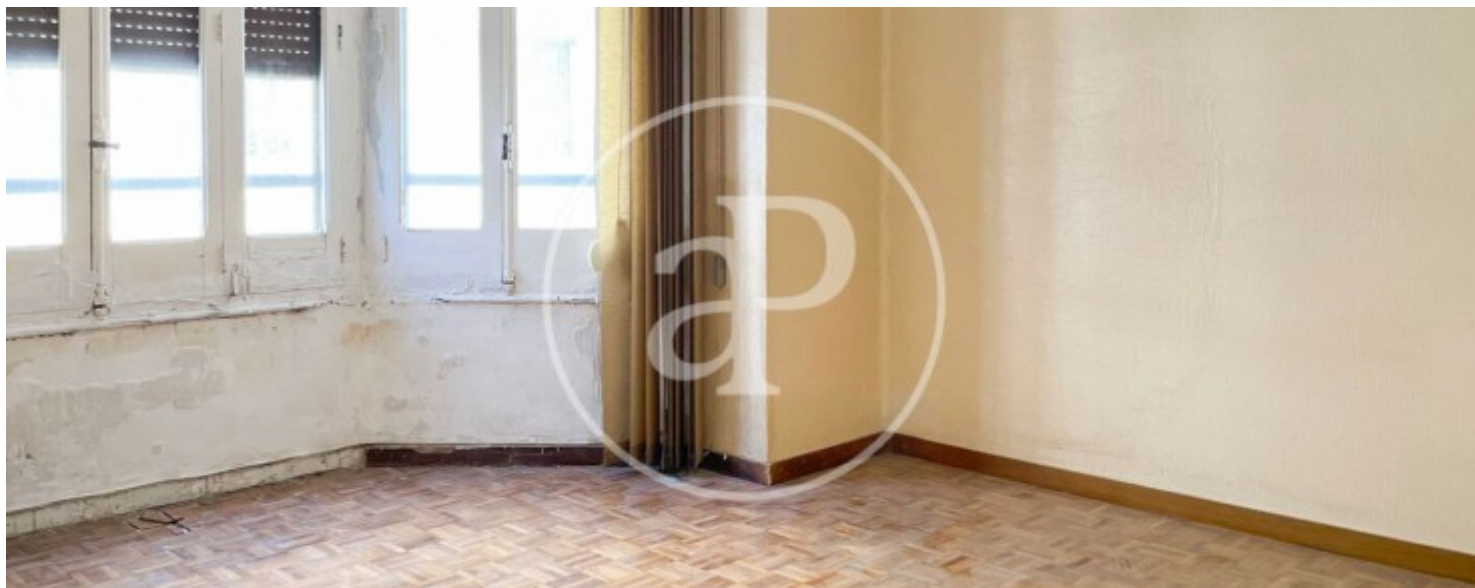
El Mercat, Valencia

REF. VV2406035



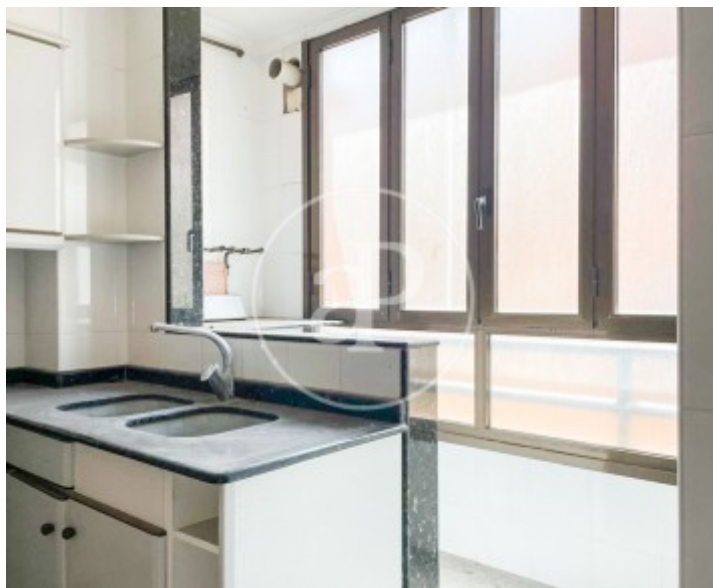
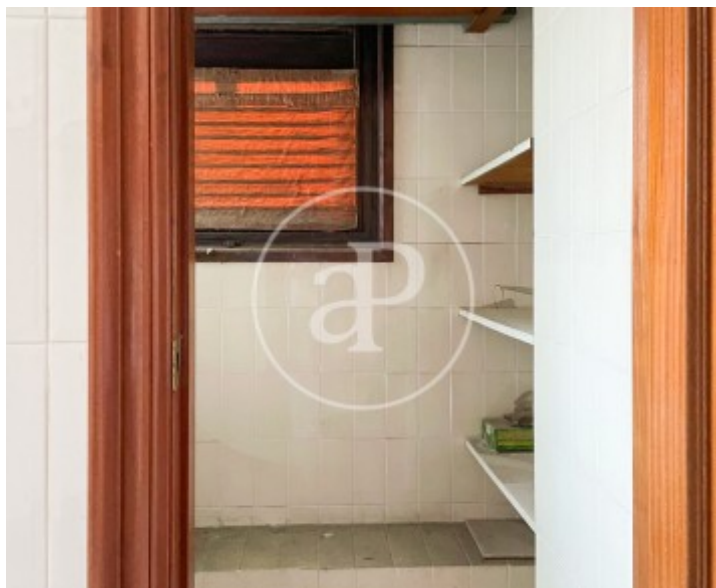
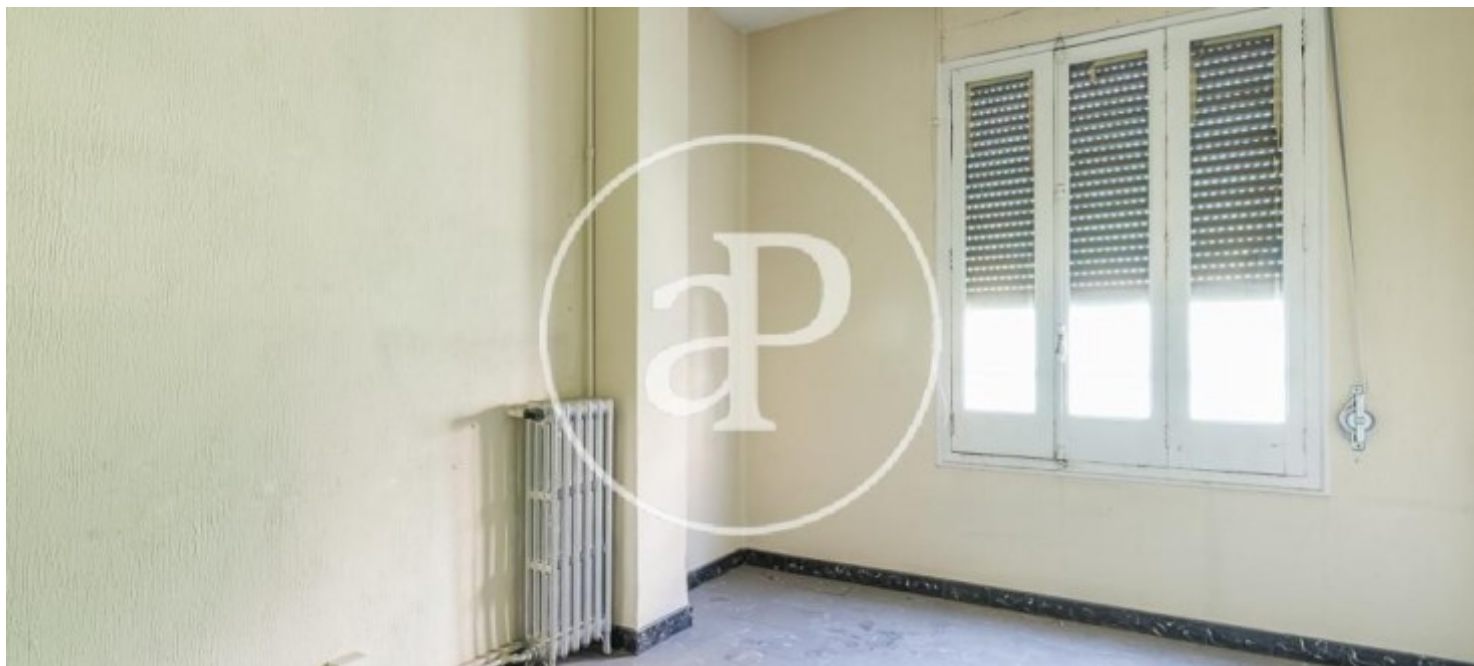
El Mercat, Valencia

REF. VV2406035



El Mercat, Valencia

REF. VV2406035



The information about any property is not binding to any offer or contract. Any verbal or written declaration made by aProperties with regards to the value or condition of the property should not be considered accurate or factual. The pictures make reference to some parts of the property at the times that they were taken. The areas, dimensions and distances that are given are approximate and should be checked by the client. The images are computer generated and are just an approximate indication of the real appearance of the property; these may change at any time. The information with regards to the property may also change at any time.

For **more information** or
to make an appointment

apropertiesvalencia@aproperties.es
Tel: 96 128 59 65
www.aproperties.es