



El Carme, Valencia

REF. AV2510016

Flat for rent with Terrace in El Carme (Valencia)

Features

- ✓ Views
- ✓ AACC
- ✓ Lift
- ✓ Furnished
- ✓ Terrace

Surface

62 m²

Bedrooms

2

Bathroom

1

Price

1,450 €



aProperties is pleased to present this fantastic fully renovated apartment, featuring a spacious living-dining room, three double bedrooms, a fully equipped kitchen, and two complete bathrooms.

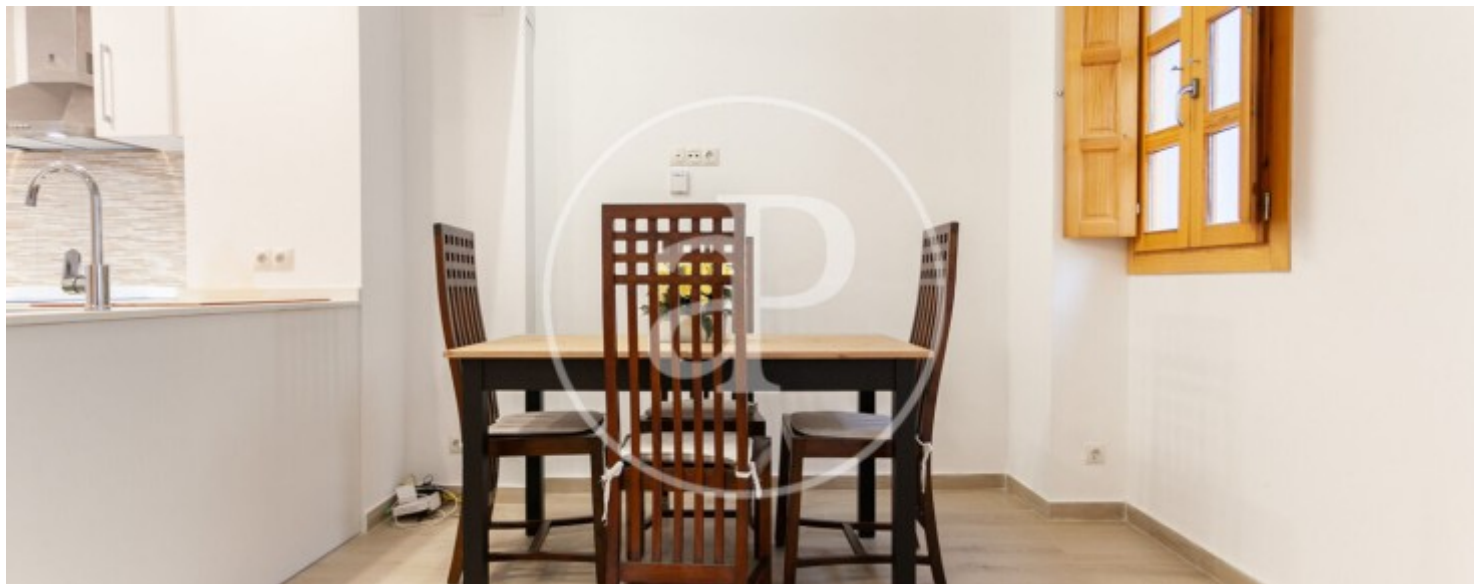
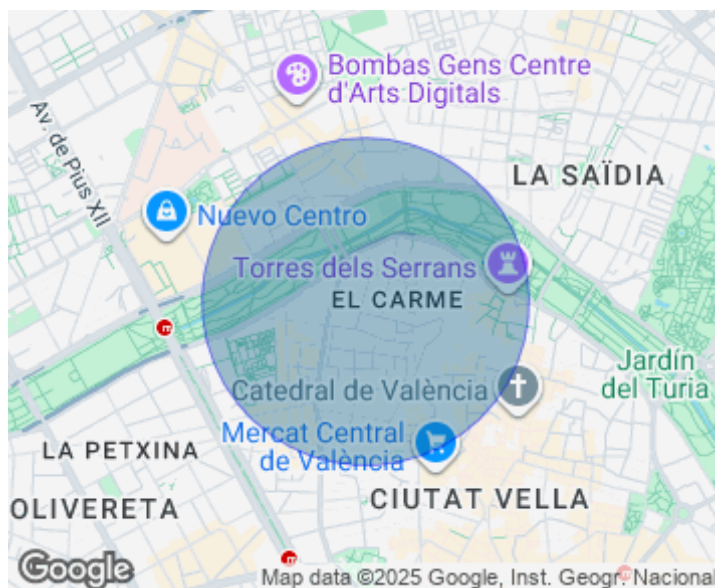
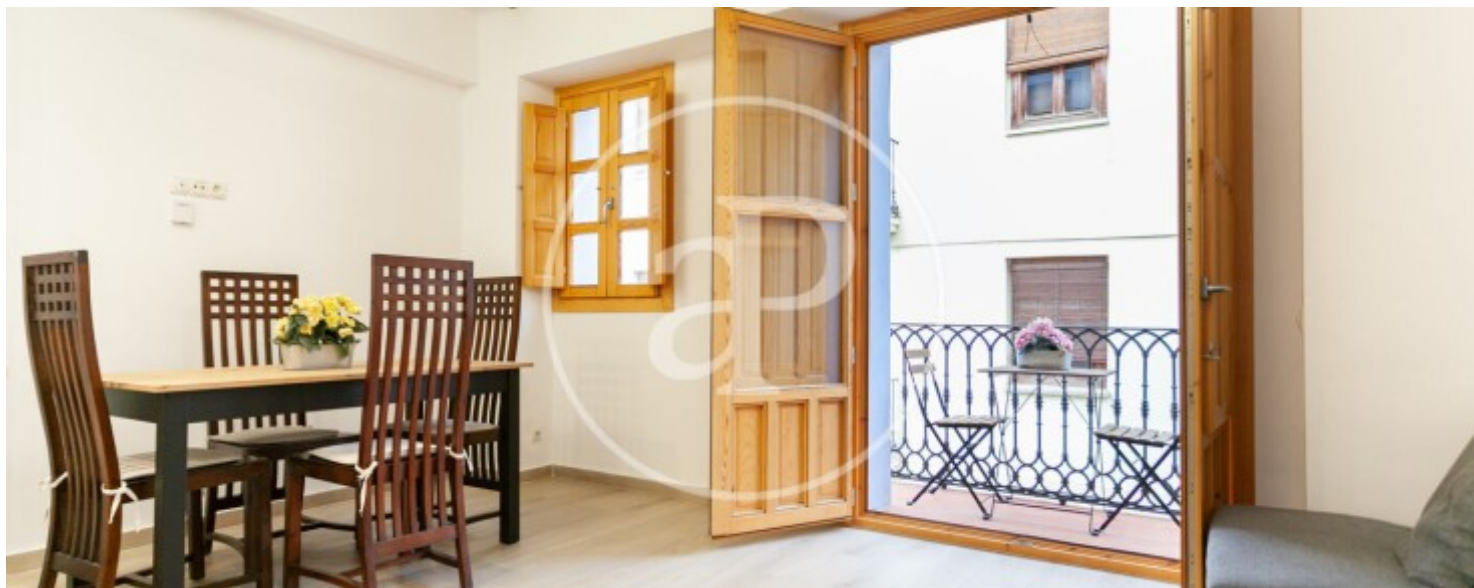
This property is ideal for large families or for sharing, as it offers three double bedrooms, all furnished with large beds and practical furniture. Fully furnished and ready to move in, this spacious apartment is located between Plaza de la Reina and Plaza del Ayuntamiento, right in the heart of Valencia. Its strategic location allows you to enjoy living in the city center while still being in a peaceful area with direct access to the city's most important

landmarks. The area offers all kinds of services: supermarkets, the famous Central Market, a wide range of restaurants, schools, high schools, pharmacies, and more. The apartment is located in the Sant Francesc neighborhood, which is part of the city's historic old town. Its center is Plaza del Ayuntamiento, where the Fallas festival is celebrated every year with music bands and giant papier-mâché figures. In the square, you'll find the majestic Town Hall building and the impressive main post office, known for its eclectic architecture. If you would like more...

Contact us,
we will be happy to assist you,
to offer you more details and information.

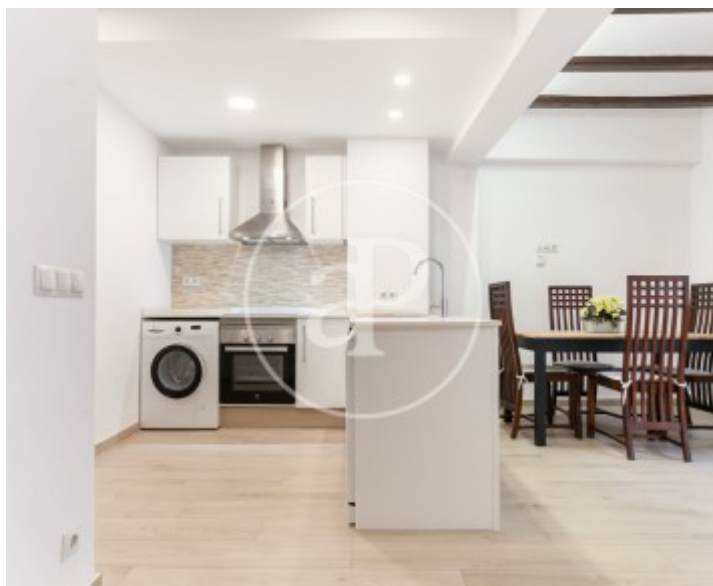
El Carme, Valencia

REF. AV2510016



El Carme, Valencia

REF. AV2510016



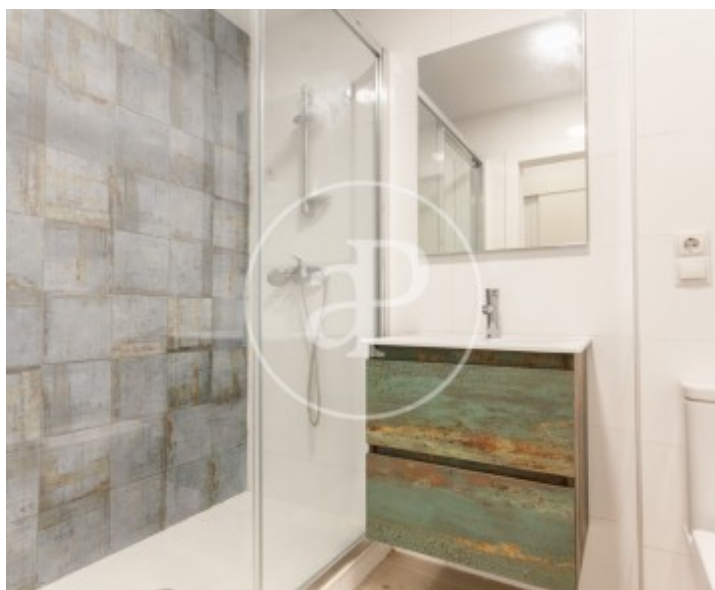
El Carme, Valencia

REF. AV2510016



El Carme, Valencia

REF. AV2510016



The information about any property is not binding to any offer or contract. Any verbal or written declaration made by aProperties with regards to the value or condition of the property should not be considered accurate or factual. The pictures make reference to some parts of the property at the times that they were taken. The areas, dimensions and distances that are given are approximate and should be checked by the client. The images are computer generated and are just an approximate indication of the real appearance of the property; these may change at any time. The information with regards to the property may also change at any time.

For **more information** or
to make an appointment

apropertiesvalencia@aproperties.es
Tel: 96 128 59 65
www.aproperties.es