

El Carme, Valencia

REF. VV2406028

Building for sale in El Carme (Valencia)

Features

- ✓ Views
- ✓ Boxroom
- ✓ Terrace
- ✓ Concierge
- ✓ Heating
- ✓ AACC
- ✓ Lift
- ✓ Has parking

Surface

2,596 m²



Price

7,500,000 €

A building of 2,596 meters built on the ground floor plus four floors is offered, on a plot of 560 square meters in a building to rehabilitate.

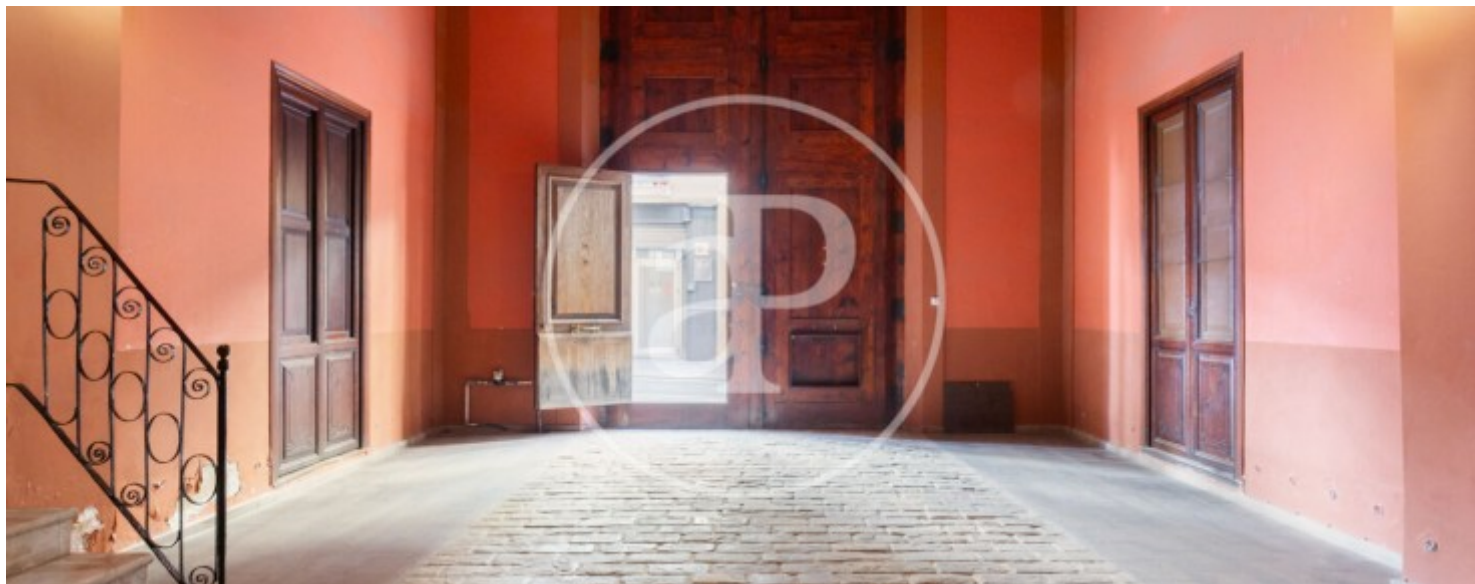
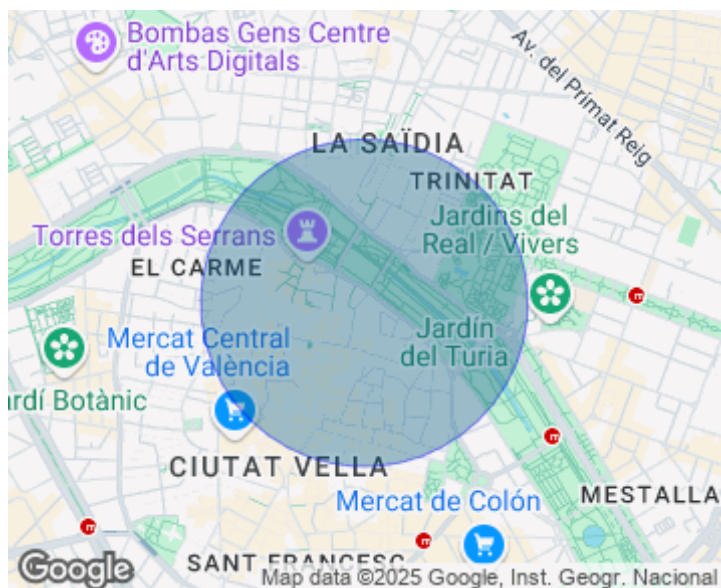
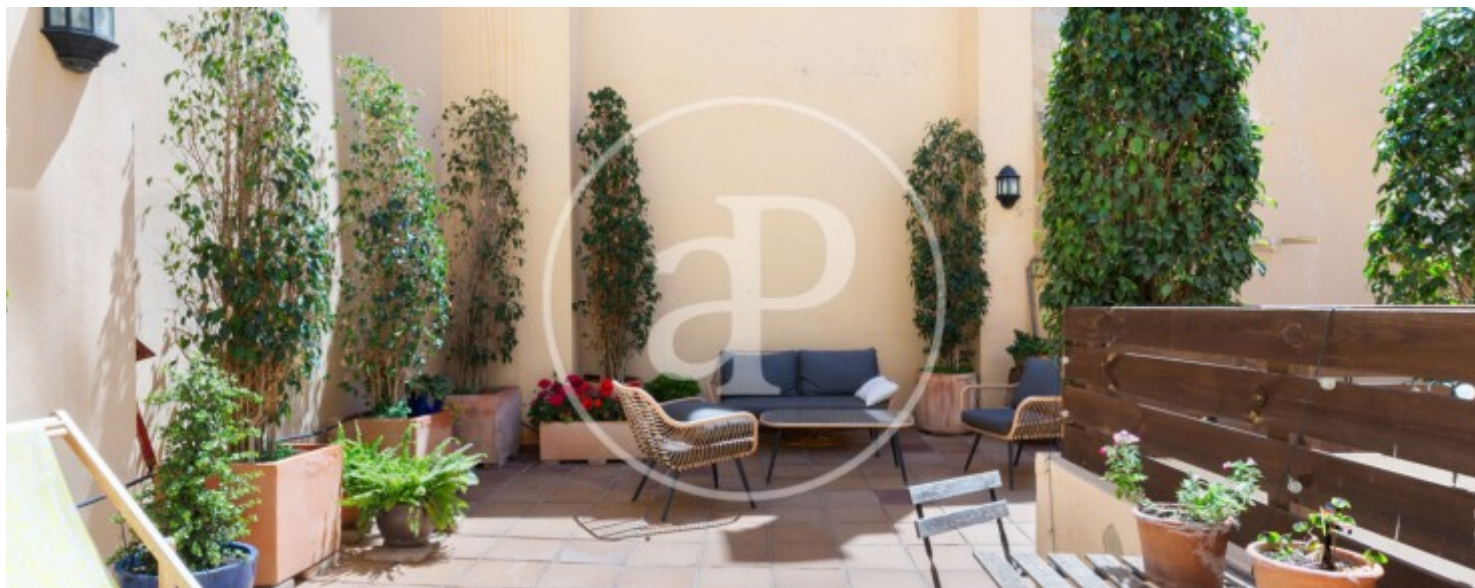
located in the charming Carmen neighborhood, in the heart of the historic center of Valencia, known as Ciutat Vella. This opportunity is ideal for both investors and real estate developers who wish to take advantage of the potential of this privileged location. The building stands out for its uniqueness and excellent location, being part of an area well connected by public transport networks, including metro and buses. In addition, it is located within walking distance of the main points of interest in the city, making it an

attractive option for those looking to enjoy Valencian urban life. The location of the building in Ciutat Vella places it in proximity to various points of interest, such as the Plaza de la Virgen market, the Serrano Towers and the Turia riverbed. In addition, it is located a short distance from the main tourist attractions of Valencia capital, which increases its attractiveness for both residents and visitors. For more information about this unique opportunity and to arrange a visit to the building, please do not hesitate to contact us. We will be happy to assist you and provide you with all...

Contact us,
we will be happy to assist you,
to offer you more details and information.

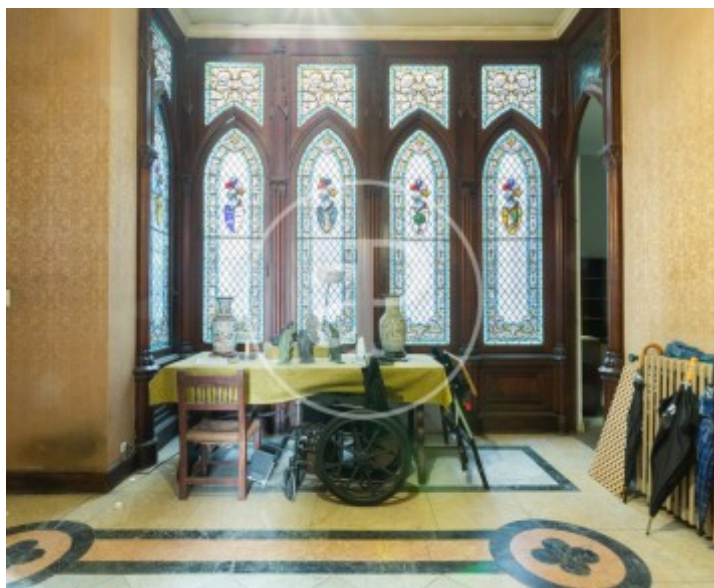
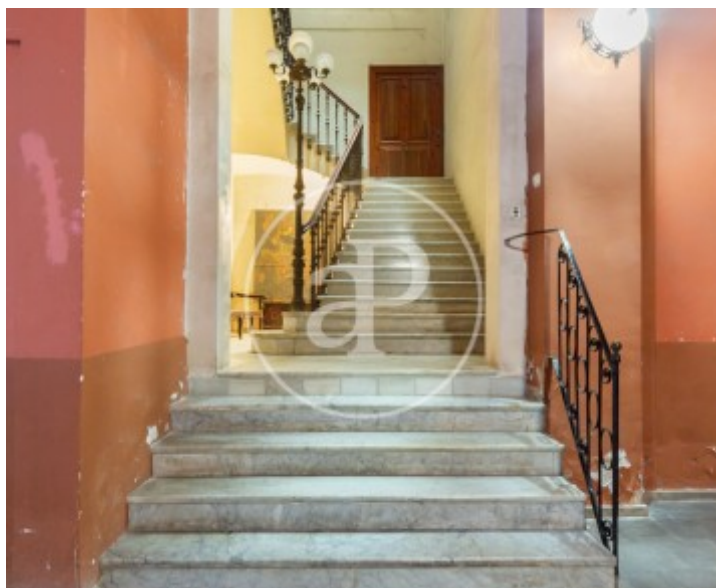
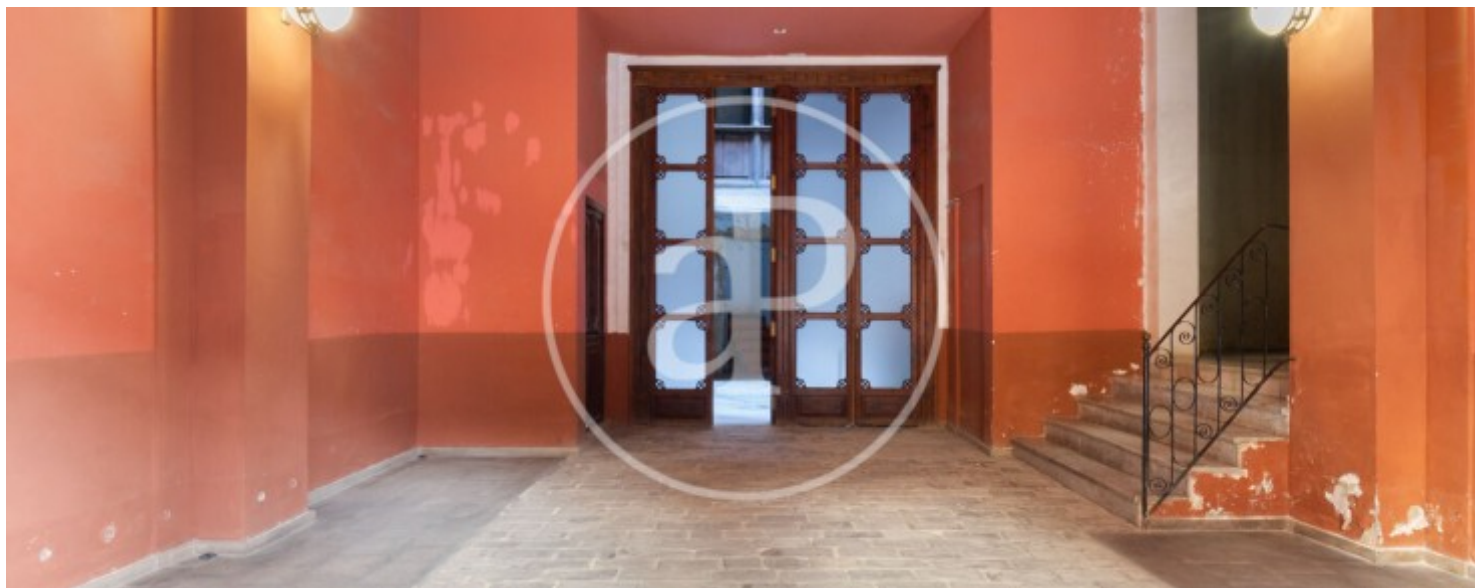
El Carme, Valencia

REF. VV2406028



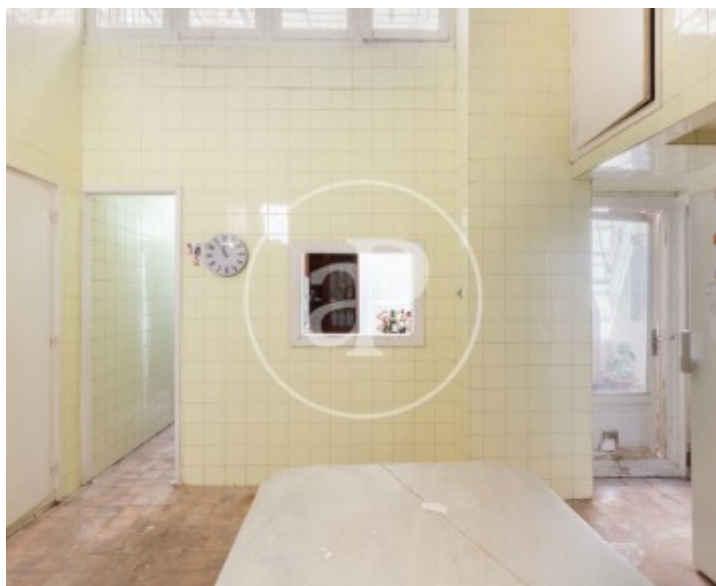
El Carme, Valencia

REF. VV2406028



El Carme, Valencia

REF. VV2406028



El Carme, Valencia

REF. VV2406028



The information about any property is not binding to any offer or contract. Any verbal or written declaration made by aProperties with regards to the value or condition of the property should not be considered accurate or factual. The pictures make reference to some parts of the property at the times that they were taken. The areas, dimensions and distances that are given are approximate and should be checked by the client. The images are computer generated and are just an approximate indication of the real appearance of the property; these may change at any time. The information with regards to the property may also change at any time.

For **more information** or
to make an appointment

apropertiesvalencia@aproperties.es
Tel: 96 128 59 65
www.aproperties.es