



(Botánico)

Ref: ONV2602002



## *New building (work) for sale with Terrace in Botánico (Valencia)*

Exclusive high-end new-build home located in the sought-after El Botánico area. It stands out for its excellent layout and for having been designed to the highest quality standards, with every detail carefully considered to provide maximum comfort and well-being. The property offers 128 m<sup>2</sup> of built living space (162 m<sup>2</sup> built including communal areas), distributed into three spacious bedrooms and two full bathrooms, one of them en suite in the master bedroom. The layout is particularly functional, with generous and well-proportioned rooms and abundant natural light throughout. A key highlight is its impressive 56 m<sup>2</sup> private terrace, perfect for enjoying outdoor living in a peaceful and exclusive setting. The home features an advanced aerothermal climate control system, including underfloor heating, ducted air conditioning, and an enthalpy heat recovery system, ensuring high energy efficiency, thermal comfort and excellent indoor air quality all year round. The high-quality finishes, typical of a luxury new-build development, together with its contemporary design and spacious interiors, make this property an ideal choice for those seeking exclusivity, comfort and quality of life. Book your viewing today!

Valencia / Botánico

Unit 1 1

Completion Q1 2026

### FEATURES

Surface 128 m<sup>2</sup> / 56 m<sup>2</sup> terrace

3 Rooms

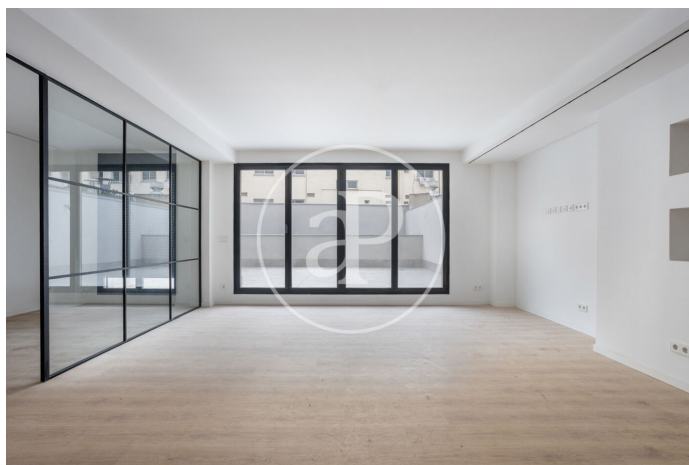
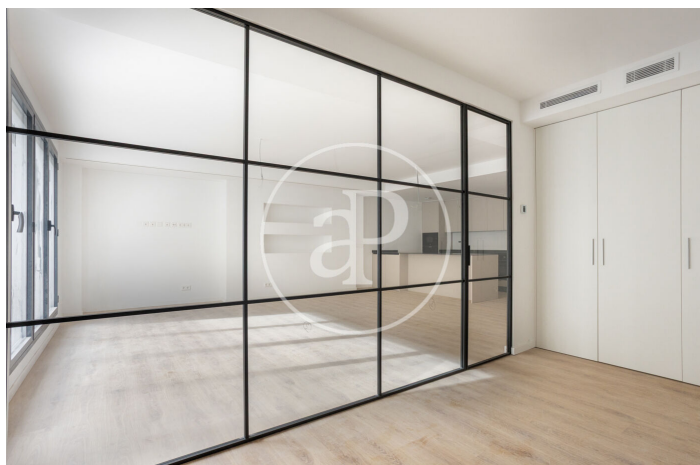
2 Toilets

- ✓ Views
- ✓ Heating
- ✓ AACC
- ✓ Terrace
- ✓ Lift

Price 649,000 €

(Botánico)

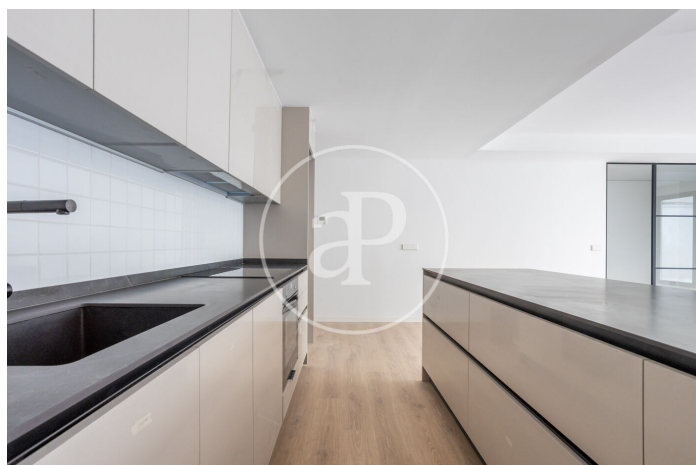
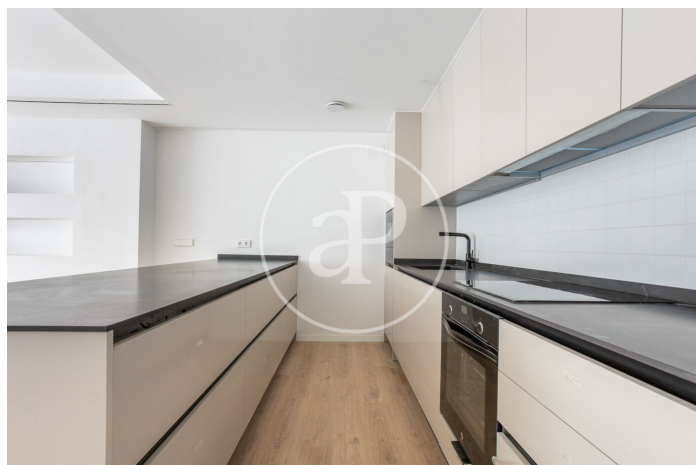
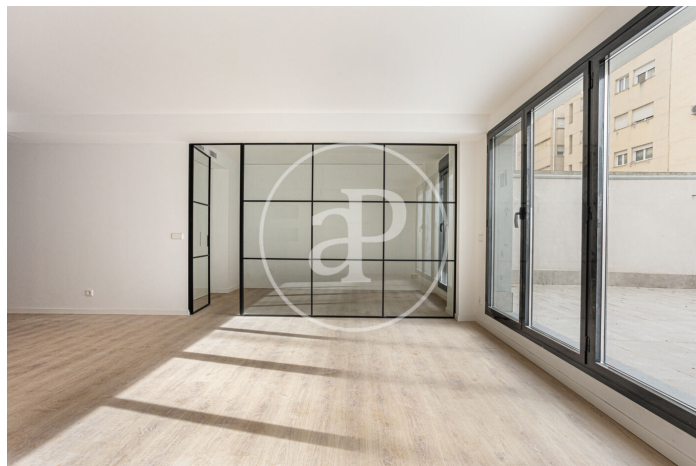
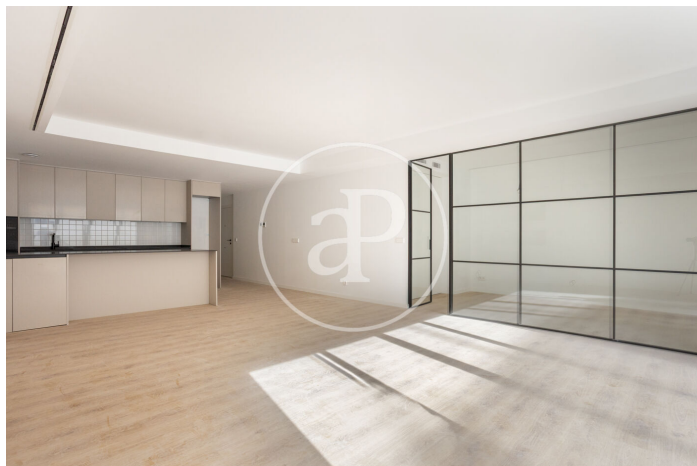
Ref: ONV2602002





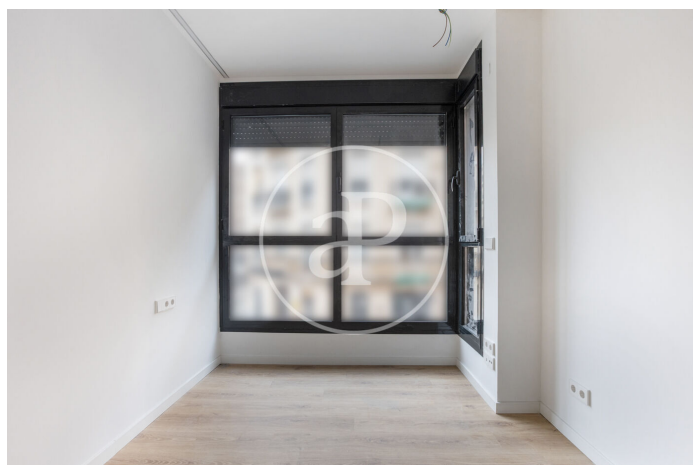
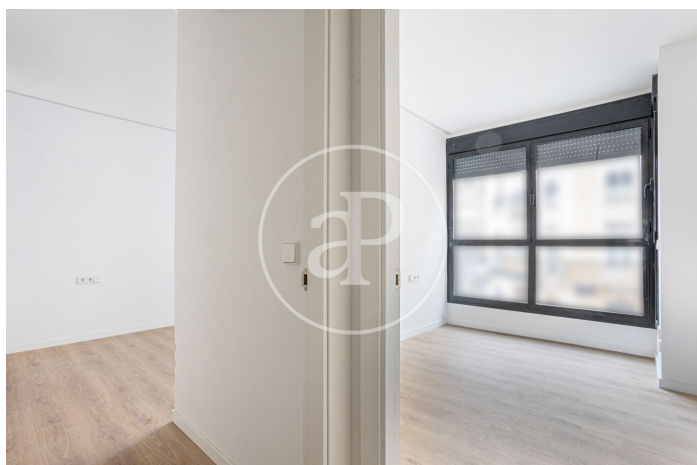
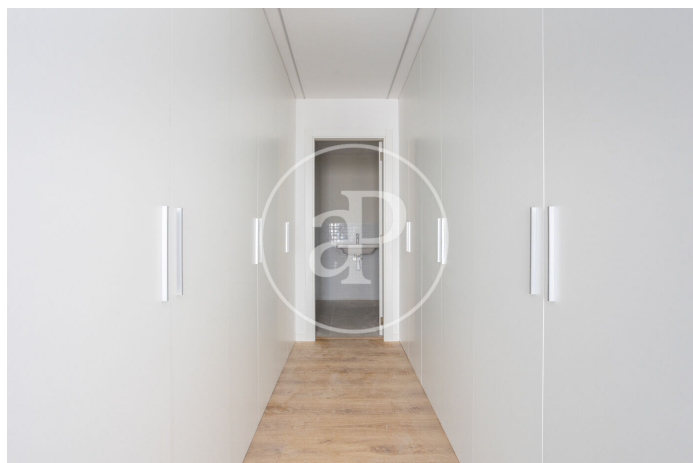
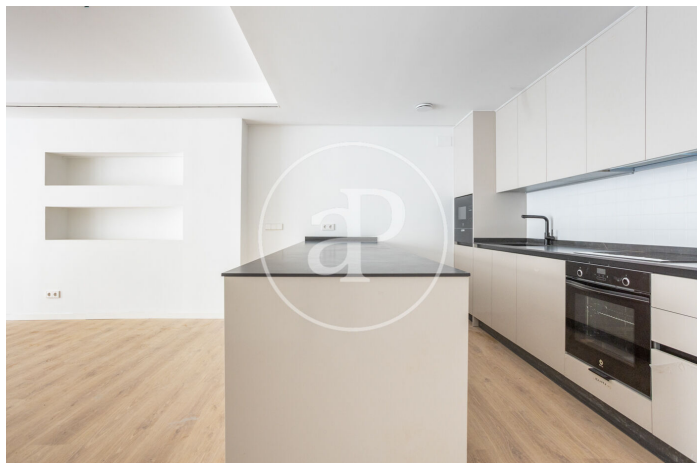
(Botánico)

Ref: ONV2602002



(Botánico)

Ref: ONV2602002



The information about any property is not binding to any offer or contract. Any verbal or written declaration made by aProperties with regards to the value or condition of the property should not be considered accurate or factual. The pictures make reference to some parts of the property at the times that they were taken. The areas, dimensions and distances that are given are approximate and should be checked by the client. The images are computer generated and are just an approximate indication of the real appearance of the property; these may change at any time. The information with regards to the property may also change at any time.

Contact us today for more information or to arrange a viewing

Tel: 96 128 59 65 [apropertiesvalencia@aproperties.es](mailto:apropertiesvalencia@aproperties.es) <https://www.aproperties.es>