



Botánico, Valencia

REF. AV1907011

Functional flat with views for rent in Botánico (Valencia)

Features

- ✓ Views
- ✓ AACC
- ✓ Furnished
- ✓ Lift

Surface

85 m²

Bedrooms

2

Bathrooms

2

Price

900 €



In the center of Valencia, in Guillem de Castro, we find this excellent house of 85m², two bedrooms and two bathrooms.

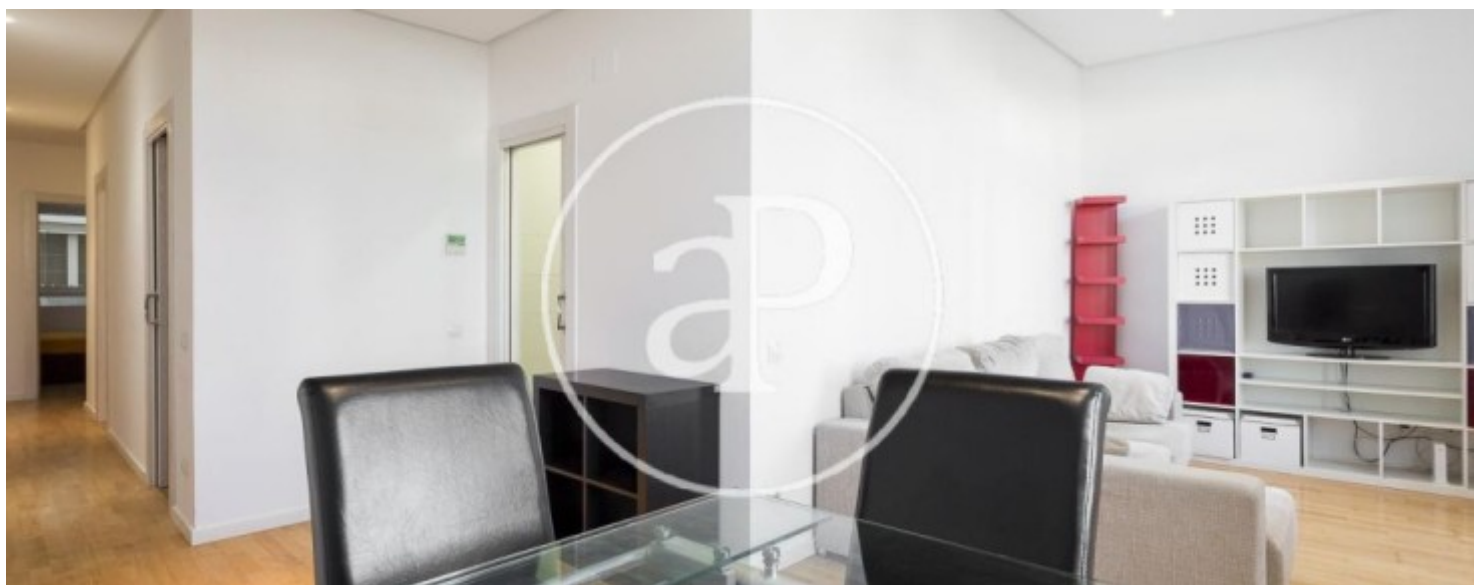
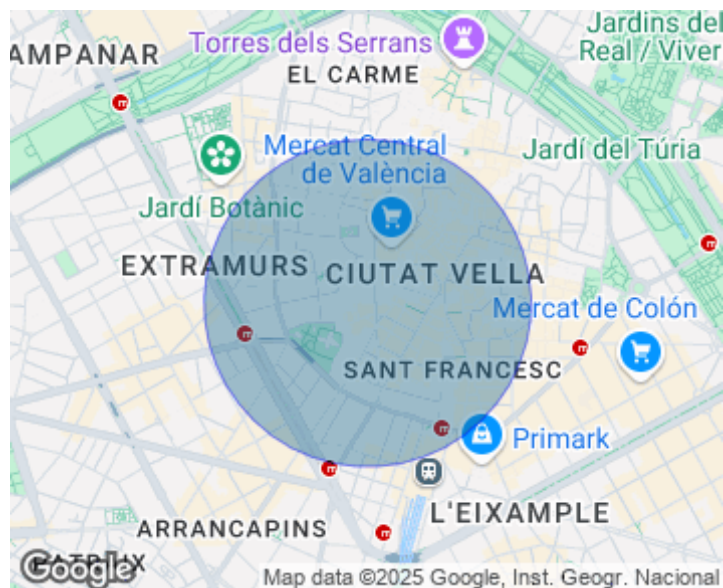
The house is fully furnished and its practical kitchen, equipped with all appliances of leading brands. Located in an old building of which only the exterior façade has been conserved, it is of new invoice and the house that we offer is practically brand new. The property is distributed logically to live comfortably and enjoy being in the center of Valencia. Highlights of this house, the functionality and comfort that gives the parquet flooring, its air conditioning cold and heat ducts, and its furnishings in perfect condition. The exterior

glassware is developed in Climalit, which favors its isolation, without disturbing the noises of the future of the street through which it is accessed. Located in a fully consolidated neighborhood, this property enjoys all services such as market, supermarkets of the first brands, schools and a long etc. of small business establishments. As for communications, it has Metro, EMT buses and taxi stands. This house is ideal for those who want to enjoy living in the center of Valencia, in a comfortable house and very well connected.

Contact us,
we will be happy to assist you,
to offer you more details and information.

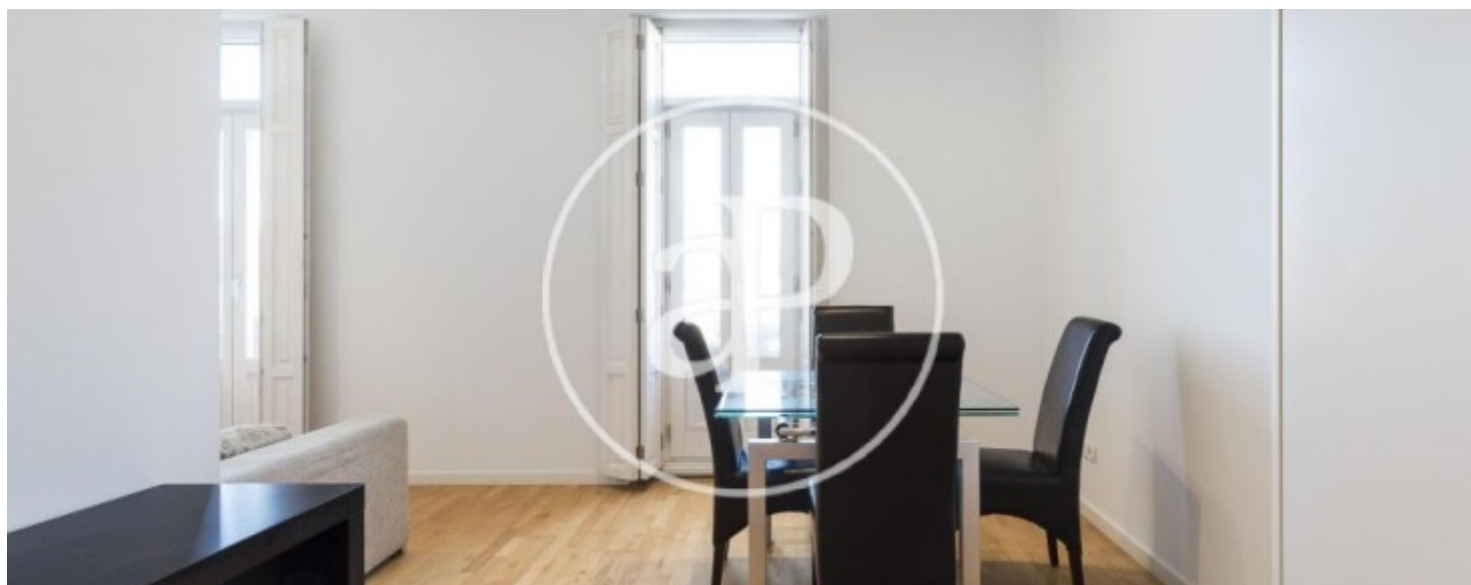
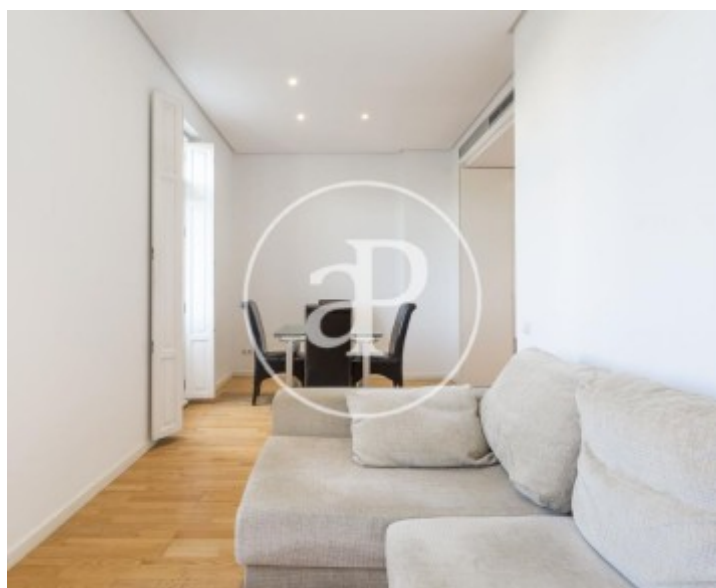
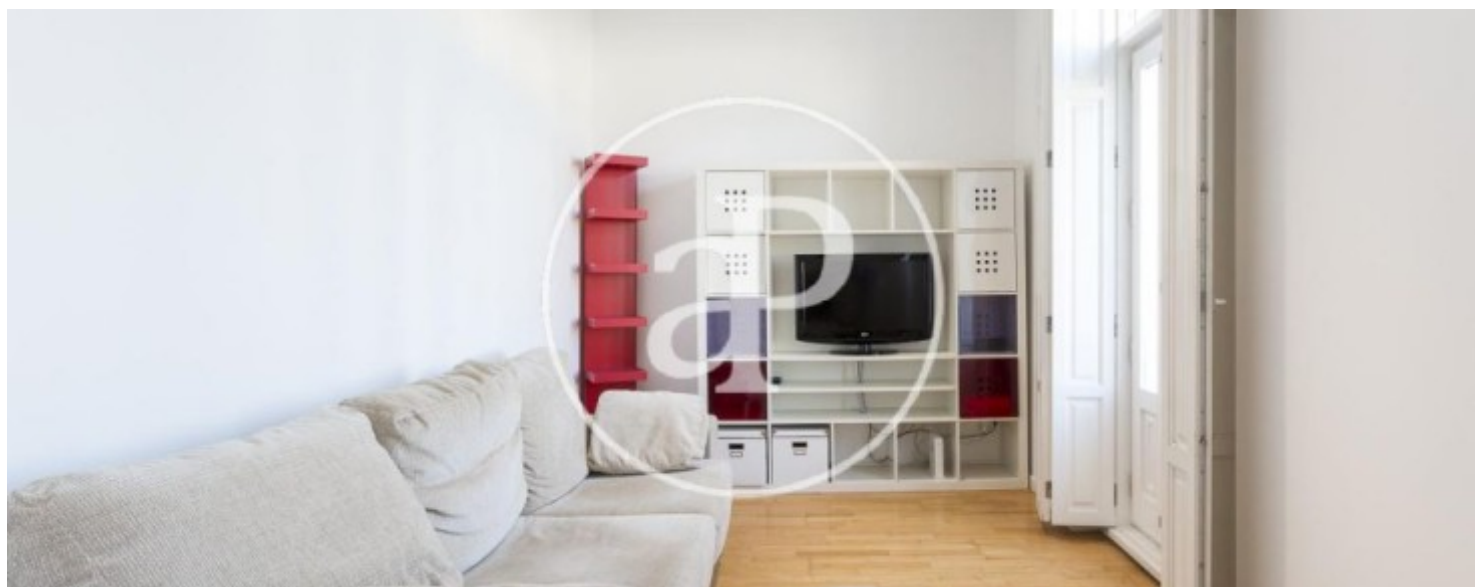
Botánico, Valencia

REF. AV1907011



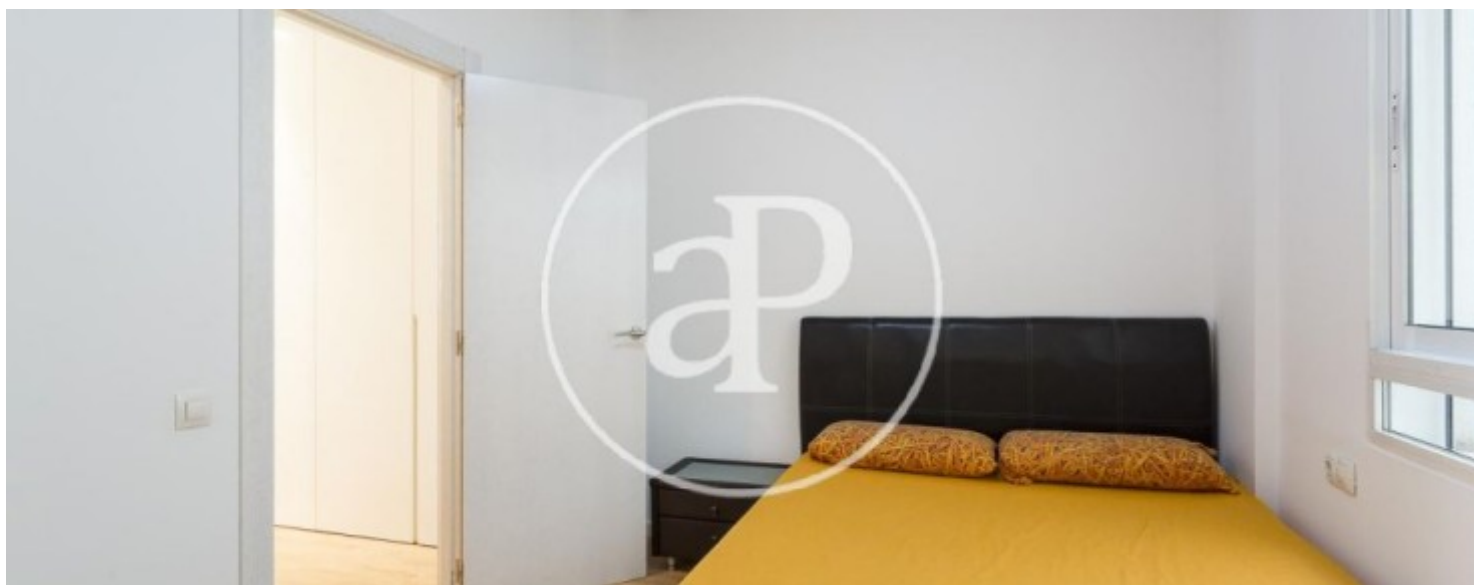
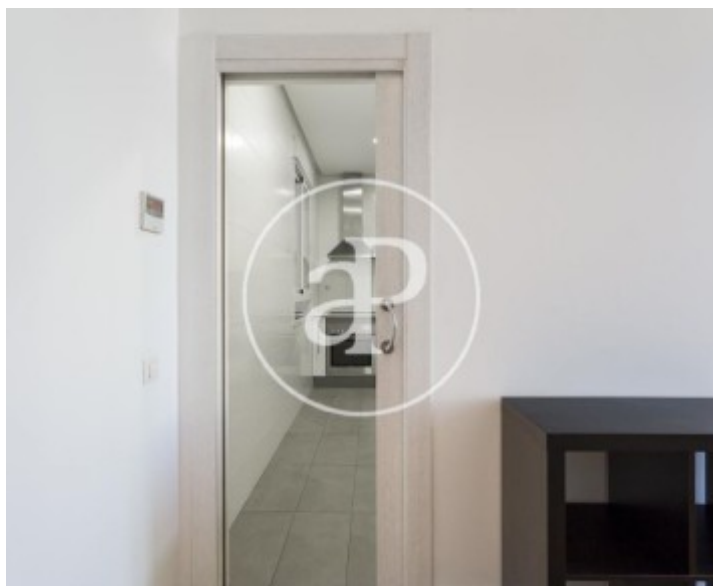
Botánico, Valencia

REF. AV1907011



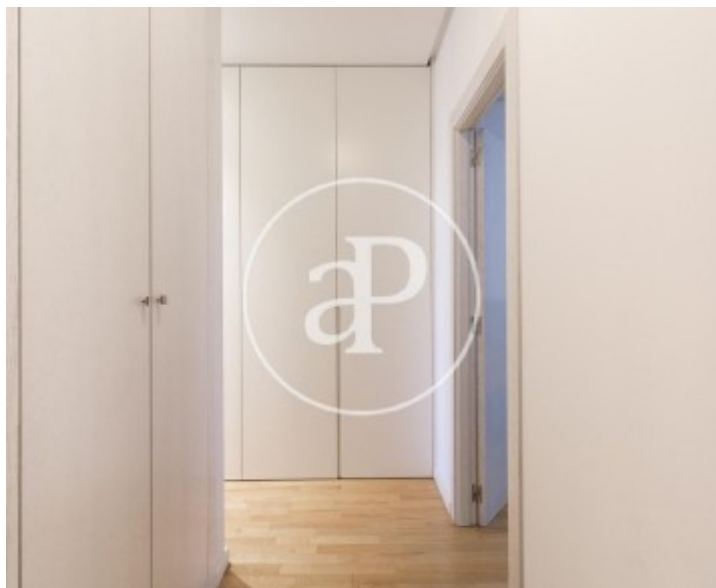
Botánico, Valencia

REF. AV1907011



Botánico, Valencia

REF. AV1907011



The information about any property is not binding to any offer or contract. Any verbal or written declaration made by aProperties with regards to the value or condition of the property should not be considered accurate or factual. The pictures make reference to some parts of the property at the times that they were taken. The areas, dimensions and distances that are given are approximate and should be checked by the client. The images are computer generated and are just an approximate indication of the real appearance of the property; these may change at any time. The information with regards to the property may also change at any time.

For **more information** or
to make an appointment

apropertiesvalencia@aproperties.es
Tel: 96 128 59 65
www.aproperties.es