

Botánico, Valencia

REF. VV2510024

Flat for sale in Botánico (Valencia)

Features

Surface

127 m²

Bedrooms

4

Bathrooms

2

✓ Lift ✓ Has parking

Price

450,000 €



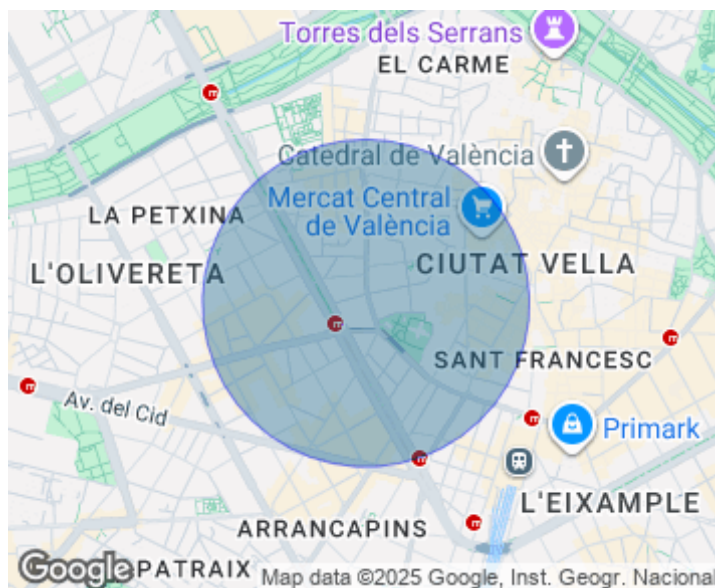
aProperties presents an excellent investment opportunity: urban land in Loriguilla At aProperties, we are pleased to present this attractive investment opportunity: a 1,082 m² plot (as per the land registry), with the possibility of subdivision into smaller plots, located in a developable area with outstanding growth potential. Just over 15 minutes from Valencia and very close to Manises Airport, this plot is strategically positioned for both residential and commercial development. The land is part of a well-established urbanization that offers a full range of services and amenities: a communal swimming pool, children's playground, shops, restaurants, a children's football school, and nearby shopping centers. Public transport is easily accessible, with buses and metro services available in

Ribarroja de Turia, just 5 km away. An added value for families is the free school transport service within the urbanization. In addition, the nearby Loriguilla train station connects directly with Valencia's Estación del Norte via the commuter rail network. This plot offers a blank canvas to bring your projects to life—whether building family homes, developing a residential complex, or launching any urban development plan you envision. For more information or to schedule a visit and explore its full potential, don't hesitate to contact us. We'll be happy to...

Contact us,
we will be happy to assist you,
to offer you more details and information.

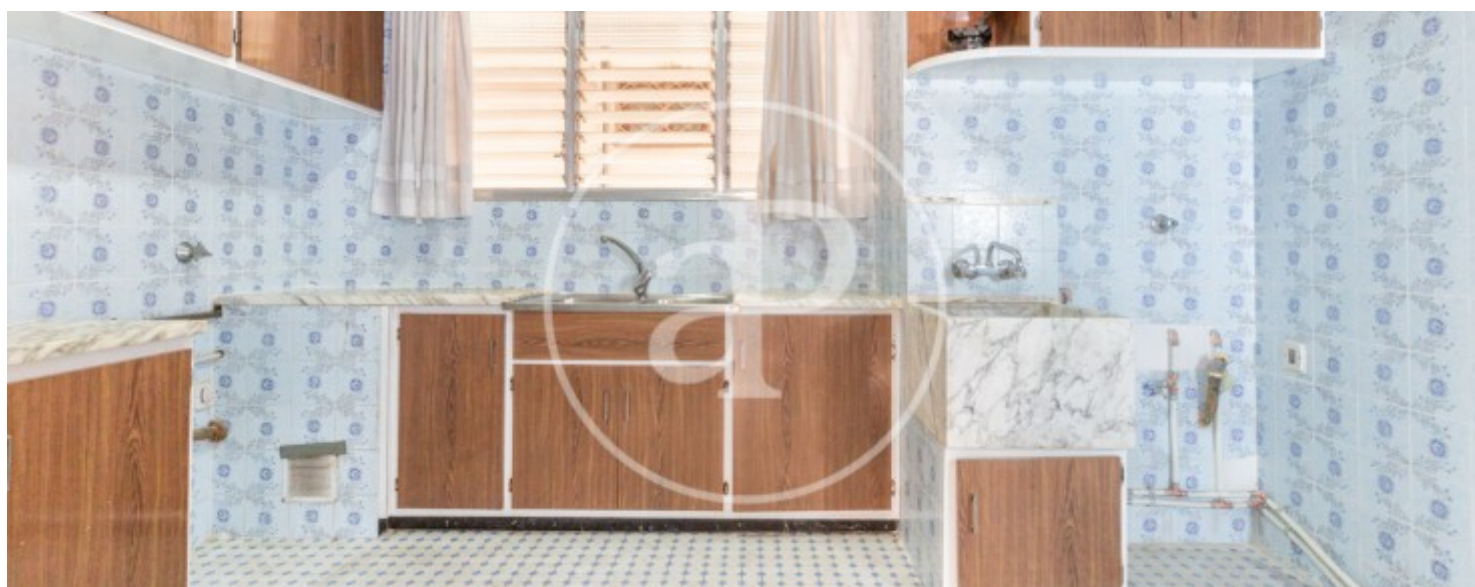
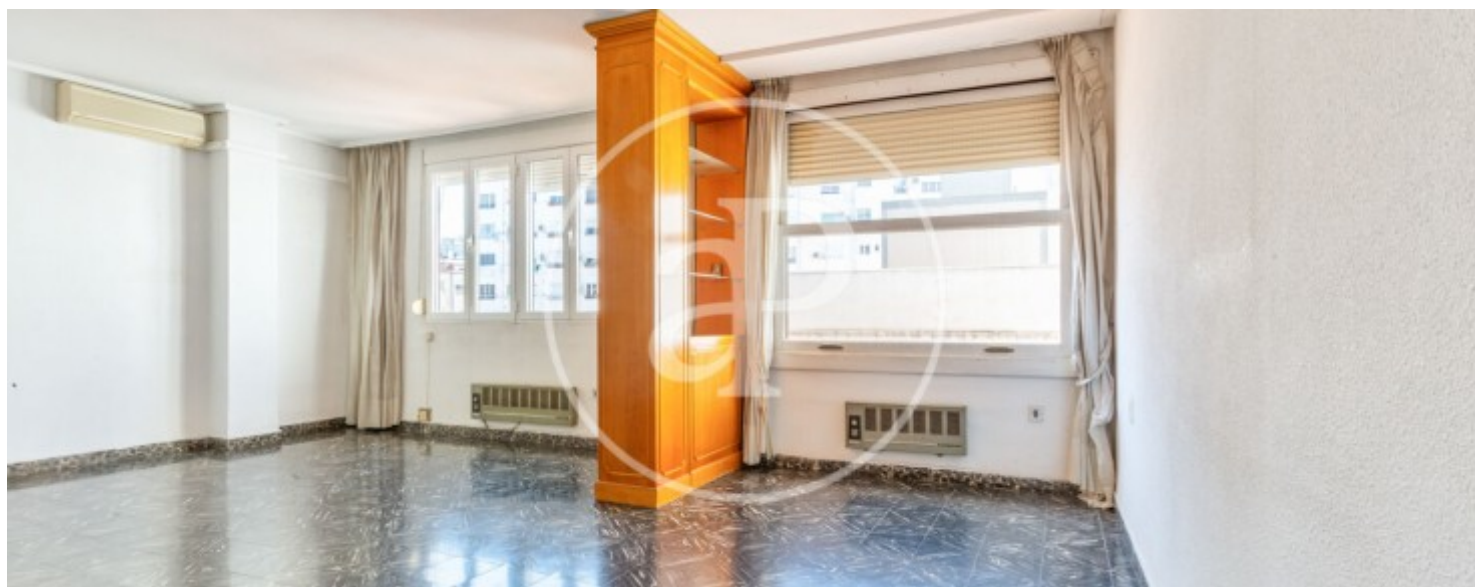
Botánico, Valencia

REF. VV2510024



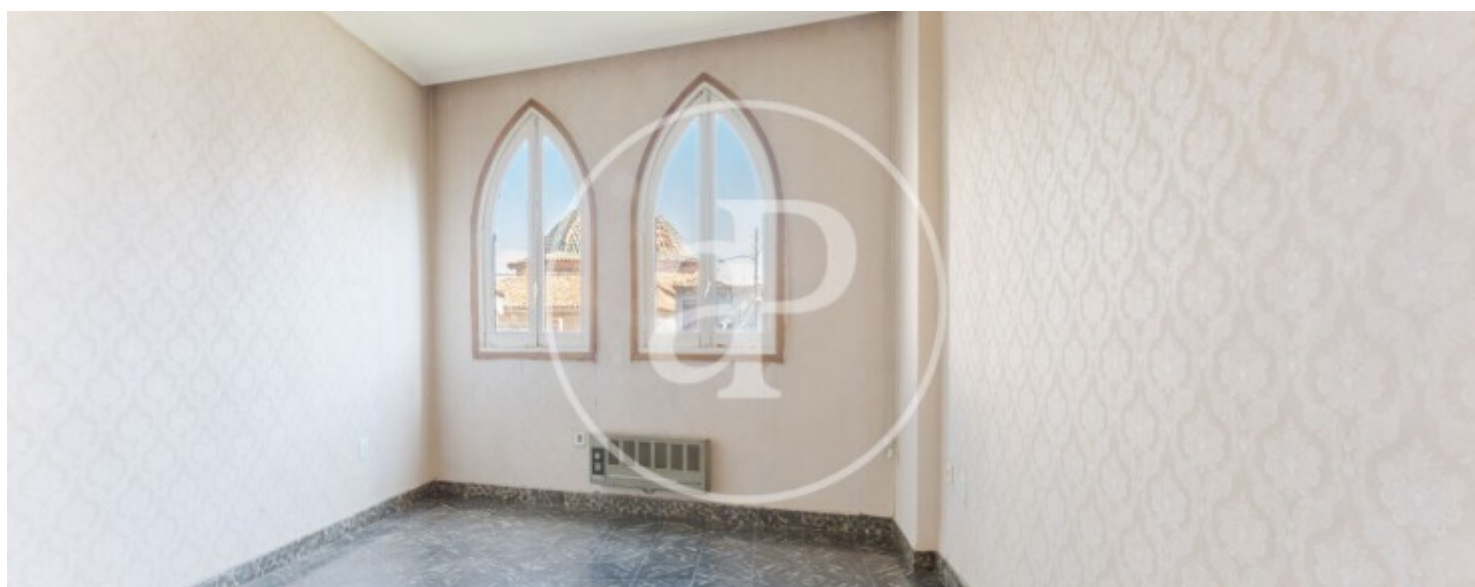
Botánico, Valencia

REF. VV2510024



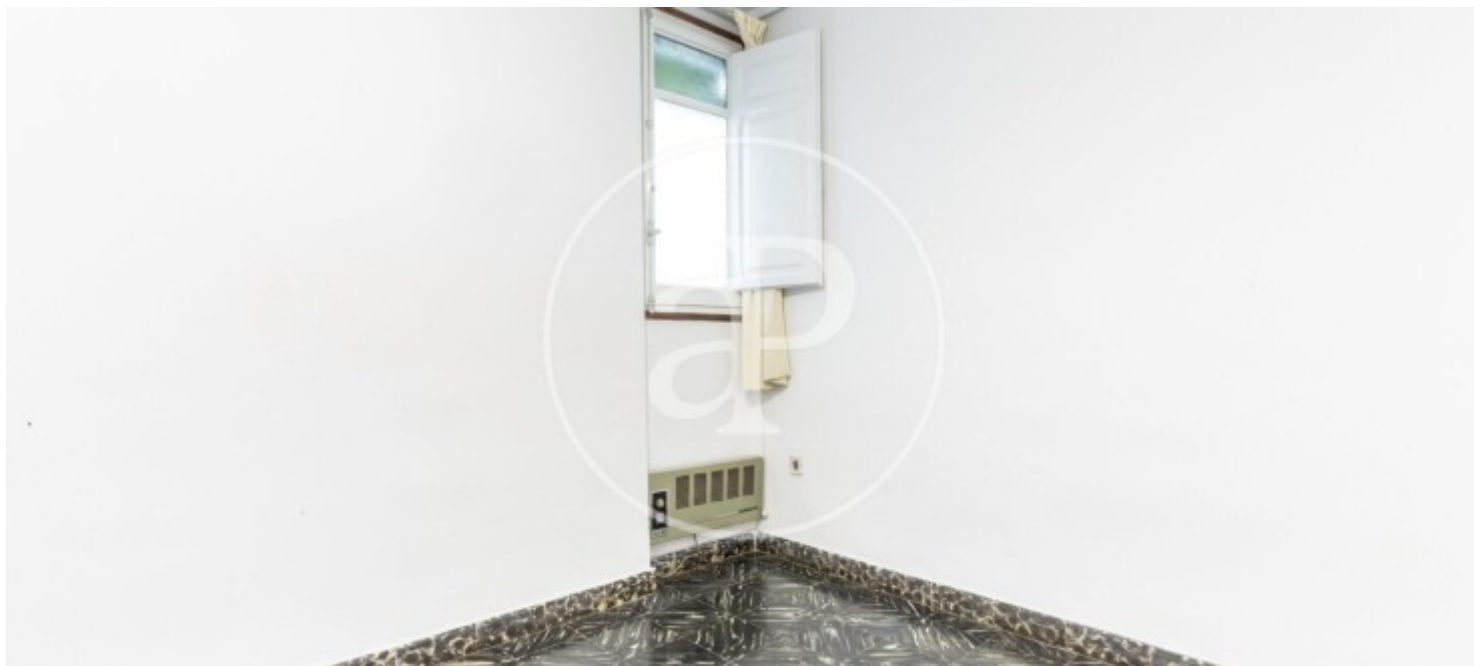
Botánico, Valencia

REF. VV2510024



Botánico, Valencia

REF. VV2510024



The information about any property is not binding to any offer or contract. Any verbal or written declaration made by aProperties with regards to the value or condition of the property should not be considered accurate or factual. The pictures make reference to some parts of the property at the times that they were taken. The areas, dimensions and distances that are given are approximate and should be checked by the client. The images are computer generated and are just an approximate indication of the real appearance of the property; these may change at any time. The information with regards to the property may also change at any time.

For **more information** or
to make an appointment

apropertiesvalencia@aproperties.es
Tel: 96 128 59 65
www.aproperties.es