

Benicalap, Valencia

REF. AV1905053-2

Flat for rent in Cortes Valencianas

Features

- ✓ Views
- ✓ AACC
- ✓ Concierge
- ✓ Heating
- ✓ Lift
- ✓ Has parking

Price
950 €

Surface
120 m²

Bedrooms
4

Bathrooms
2



Magnificent home located in an excellent area of Campanar as Cortes Valencianas.

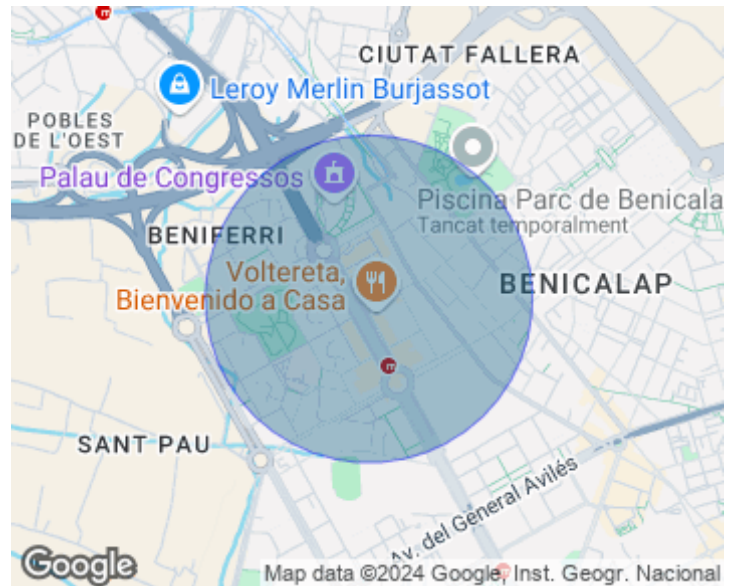
Its surface is 120 square meters and is distributed in: hall or hall, living room with ceiling windows all exterior, four rooms in which three are double and has one bathroom en suite and the fourth single room, wardrobes in all rooms, two bathrooms fully renovated, fully equipped kitchen, stands out of this house its finishes as it has double glazing windows and exterior carpentry technal brand, marble floor, oak interior carpentry, security door armored, air conditioning cold-heat through ducts, all exterior, very bright. The fantastic building has an elevator, concierge, and a large

parking space is included in the rental price. The area has an excellent communication with the whole city by public transport, next to the Congress Palace, near the Arnau Villanova hospital, so it is also very close to the Beniferri metro station, EMT line and ValenBisi, and we emphasize that it is located meters from the Polyphile Garden to enjoy the green space, do exercises or just relax. Cortes Valencianas is an area with a wide variety of restaurants, bars, fast food cuisine, next to the farm is the Consum supermarket, and very close to Mercadona, really a location par excellence to...

Contact us,
we will be happy to assist you,
to offer you more details and information.

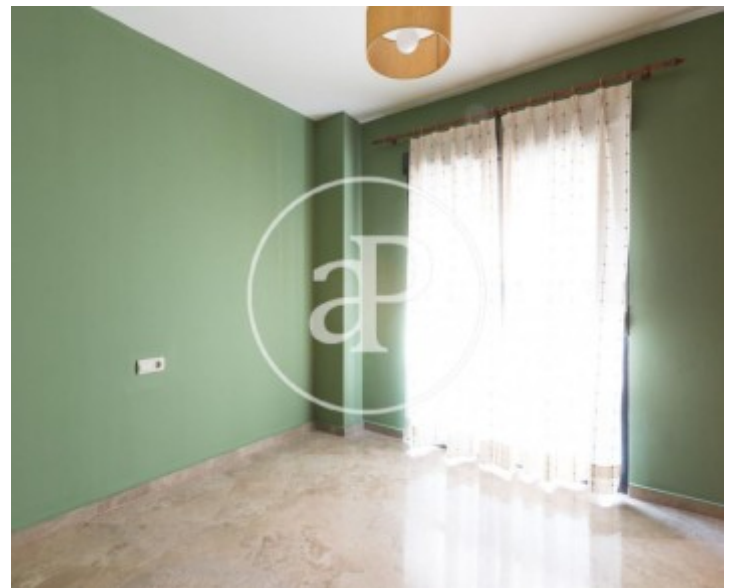
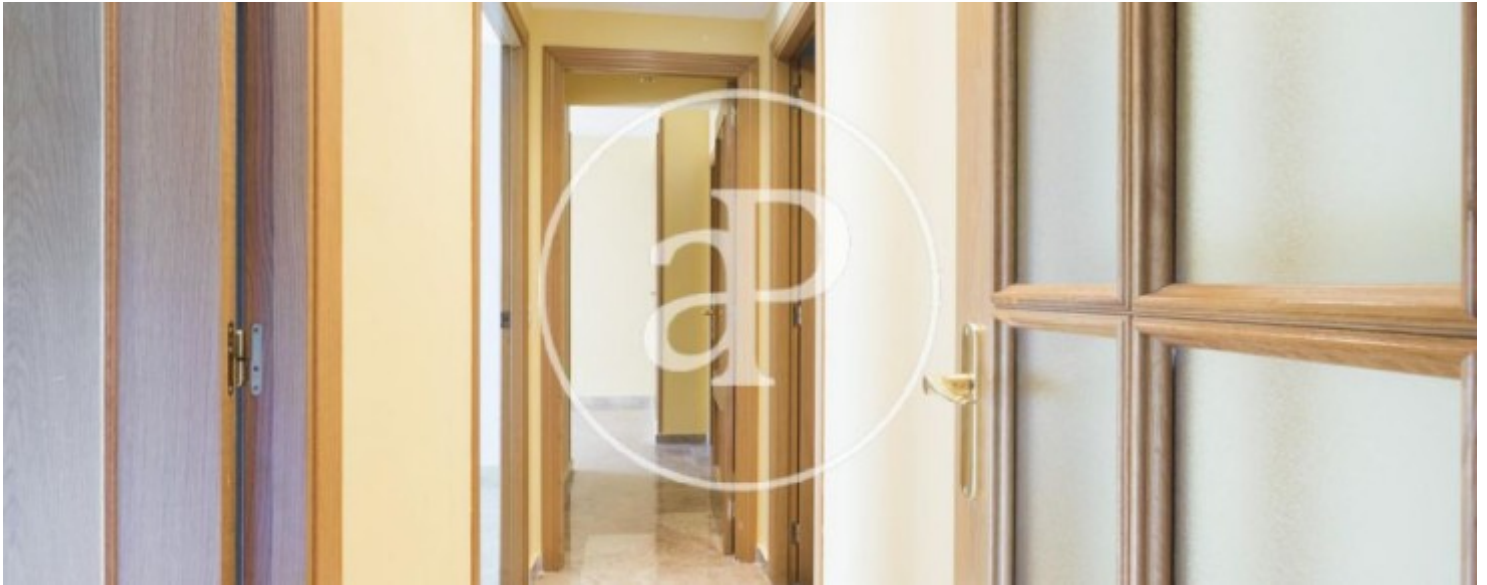
Benicalap, Valencia

REF. AV1905053-2



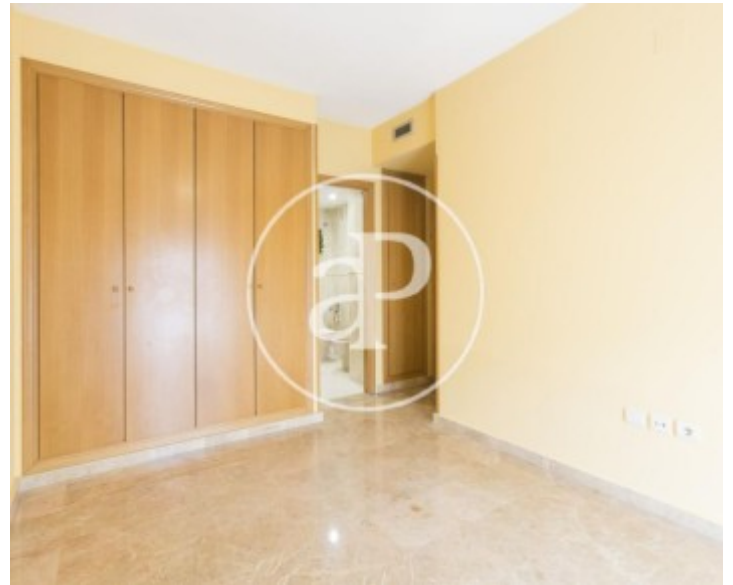
Benicalap, Valencia

REF. AV1905053-2



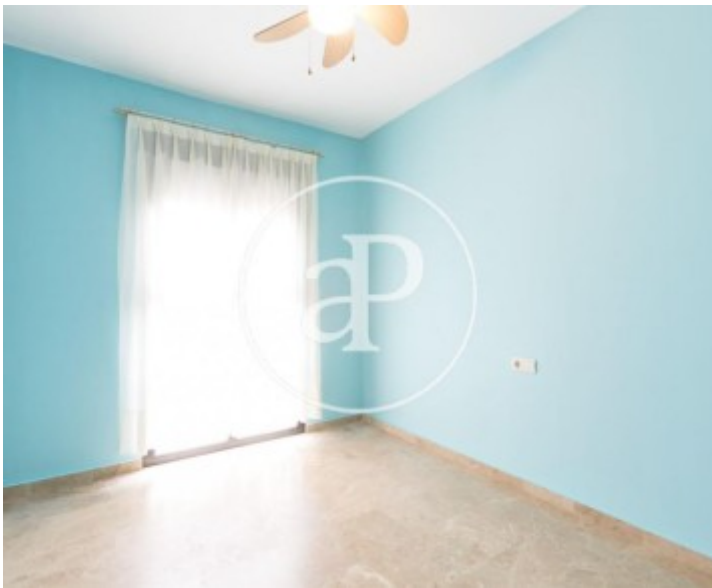
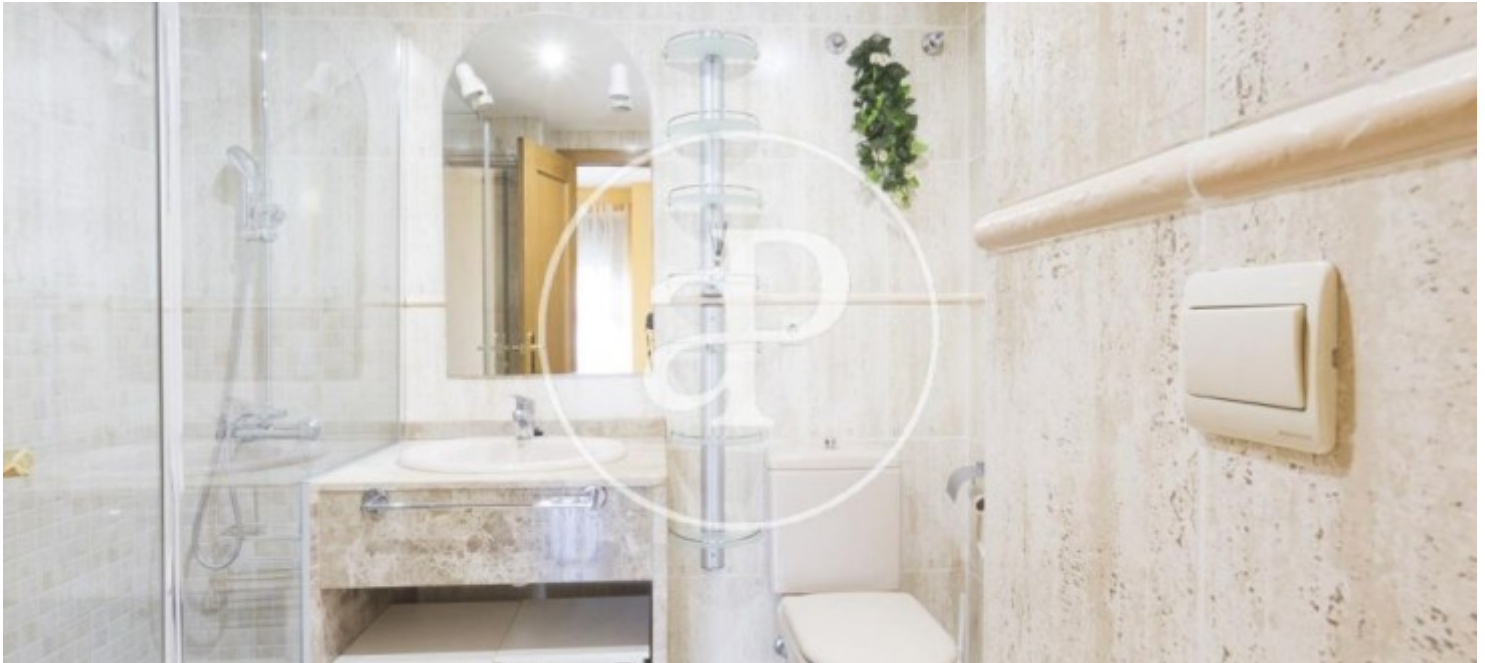
Benicalap, Valencia

REF. AV1905053-2



Benicalap, Valencia

REF. AV1905053-2



The information about any property is not binding to any offer or contract. Any verbal or written declaration made by aProperties with regards to the value or condition of the property should not be considered accurate or factual. The pictures make reference to some parts of the property at the times that they were taken. The areas, dimensions and distances that are given are approximate and should be checked by the client. The images are computer generated and are just an approximate indication of the real appearance of the property; these may change at any time. The information with regards to the property may also change at any time.

For **more information** or
to make an appointment

apropertiesvalencia@aproperties.es
Tel: 96 128 59 65
www.aproperties.es