



Sueca

REF. VV2408035

# Semi-detached house in Mareny de Barraquetes

## Features

- ✓ Views
- ✓ Boxroom
- ✓ Terrace
- ✓ Furnished
- ✓ AACC
- ✓ Has parking

Surface

195 m<sup>2</sup>

Bedrooms

5

Bathrooms

2

Price

299,900 €



**aProperties is pleased to present this charming townhouse located just a few meters from the sea, in Playa del Rey, Mareny de Barraquetes (Sueca).**

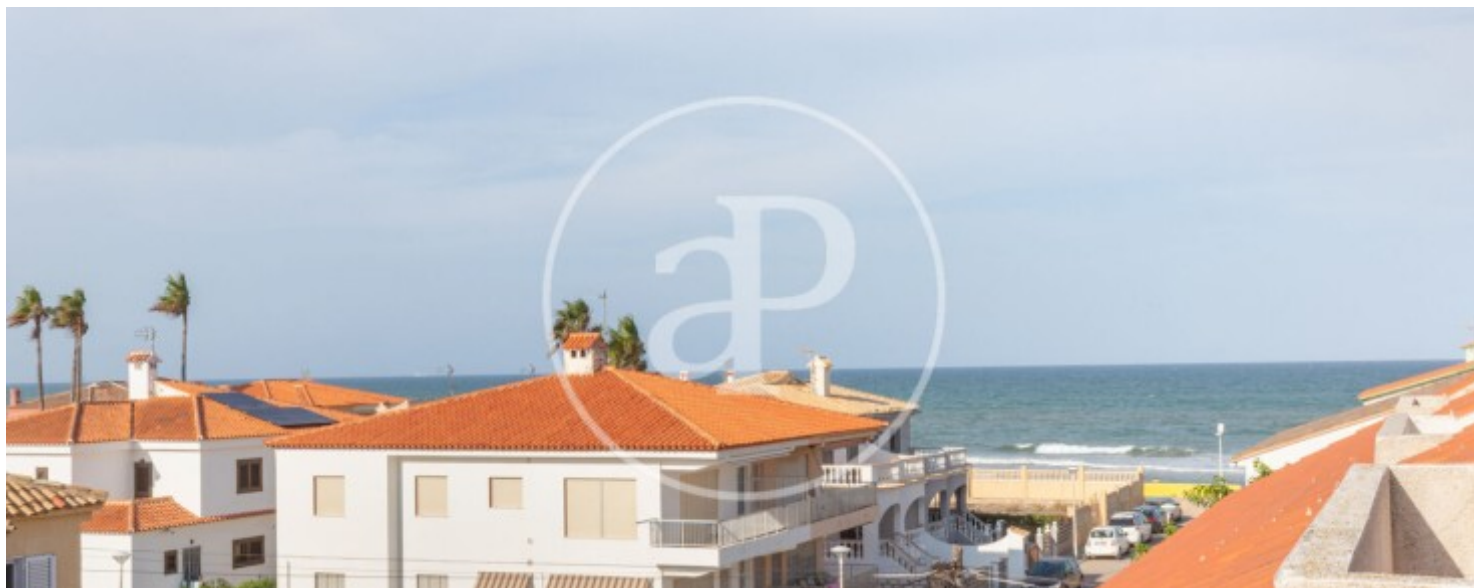
Nestled within the Albufera Natural Park, and only 7 km from Sueca, 28 km from Valencia, and 9 km from Cullera, this property enjoys a unique natural setting that combines tranquility with excellent connectivity. The house is distributed over three floors and includes a covered underground garage with space for two vehicles. The main entrance is accessed via an independent staircase leading to a welcoming porch. On the first floor, there is a spacious living-dining room, a large separate kitchen that is fully equipped, and

a complete bathroom. Behind the kitchen, you'll find an outdoor terrace, perfect for installing a paella area or barbecue. The second floor features three double bedrooms, one single bedroom, a balcony, an additional terrace, and a second full bathroom. The third floor hosts a large bedroom with a private terrace, ideal for enjoying the peaceful atmosphere and pleasant views of the surroundings. Playa del Rey is known for its peaceful and natural environment — a quiet, uncrowded beach fully equipped with showers, lifeguard service, and daily maintenance. It offers easy parking...

**Contact us,**  
we will be happy to assist you,  
to offer you more details and information.

Sueca

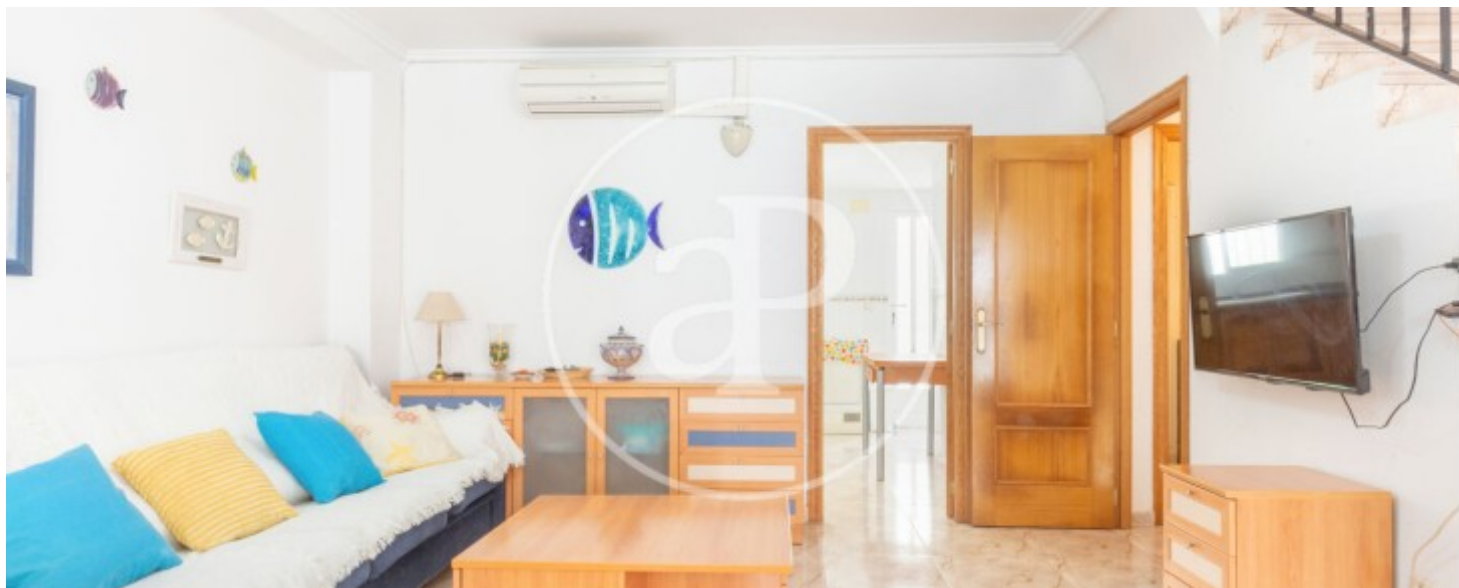
REF. VV2408035





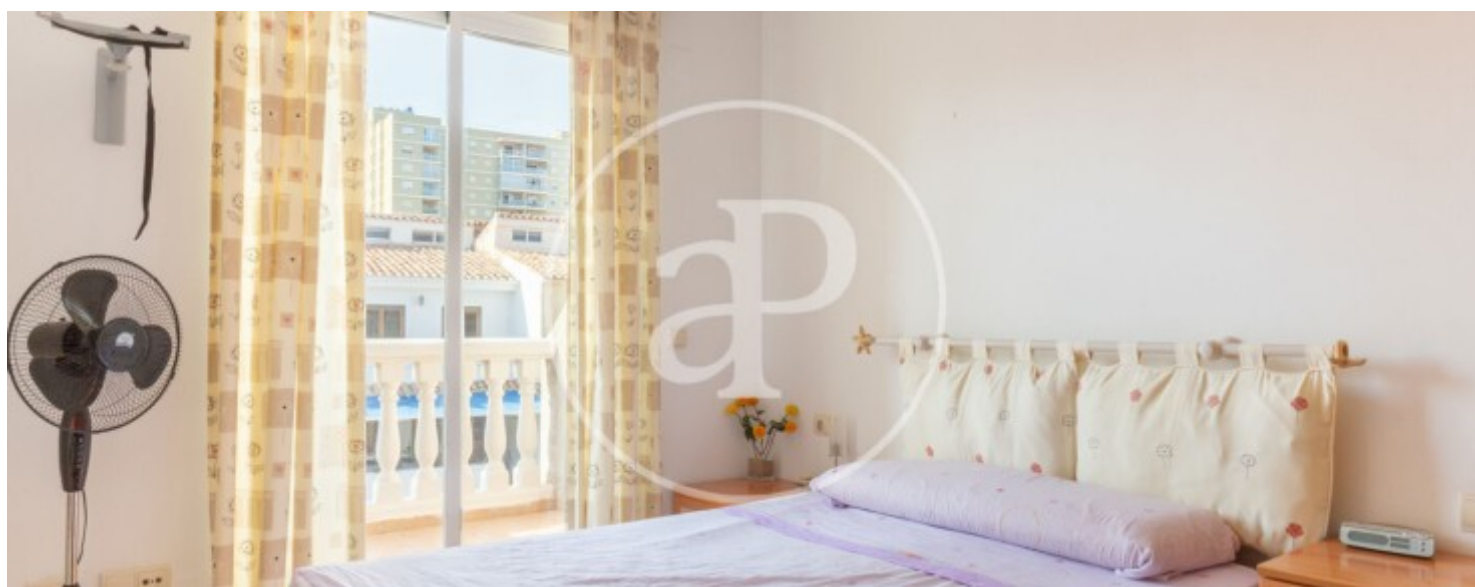
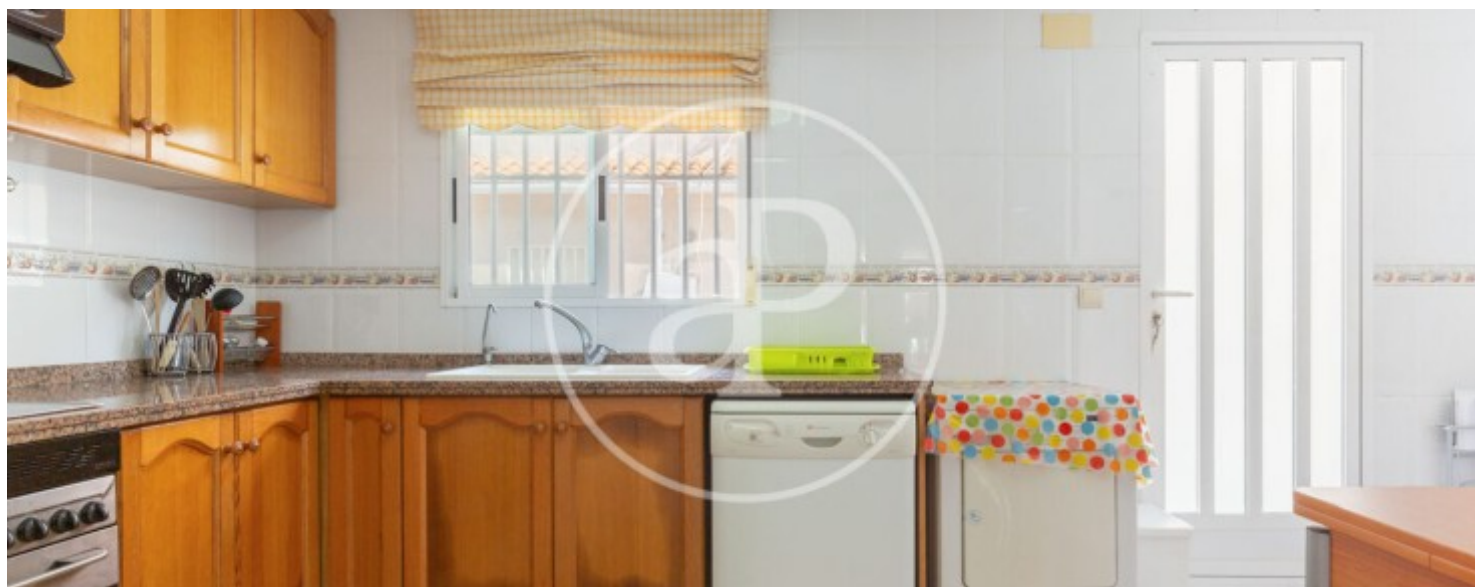
Sueca

REF. VV2408035



Sueca

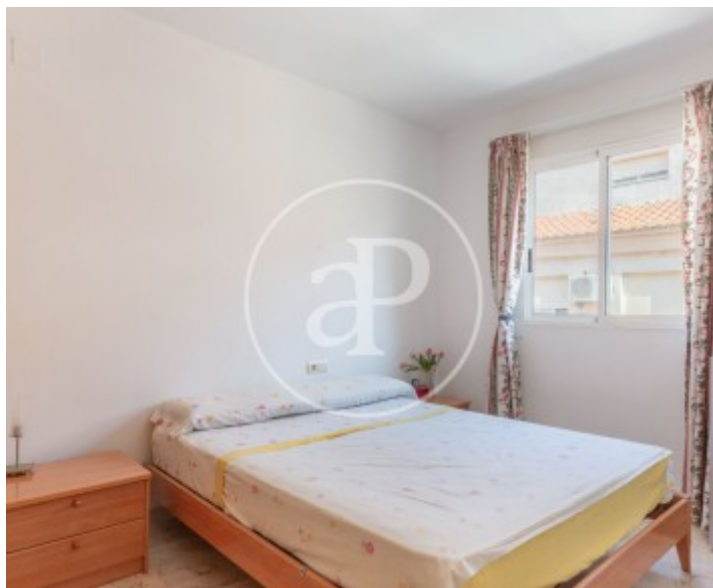
REF. VV2408035





Sueca

REF. VV2408035



The information about any property is not binding to any offer or contract. Any verbal or written declaration made by aProperties with regards to the value or condition of the property should not be considered accurate or factual. The pictures make reference to some parts of the property at the times that they were taken. The areas, dimensions and distances that are given are approximate and should be checked by the client. The images are computer generated and are just an approximate indication of the real appearance of the property; these may change at any time. The information with regards to the property may also change at any time.

For **more information** or  
to make an appointment

[apropertiesvalencia@aproperties.es](mailto:apropertiesvalencia@aproperties.es)  
Tel: 96 128 59 65  
[www.aproperties.es](http://www.aproperties.es)