

Cala Millor, Son Servera

REF. APM2302062



Apartment for rent with sea views in Cala Bona

Features

- ✓ Views
- ✓ AACC
- ✓ Backyard
- ✓ Furnished
- ✓ Terrace

Price

1,500 €

Surface

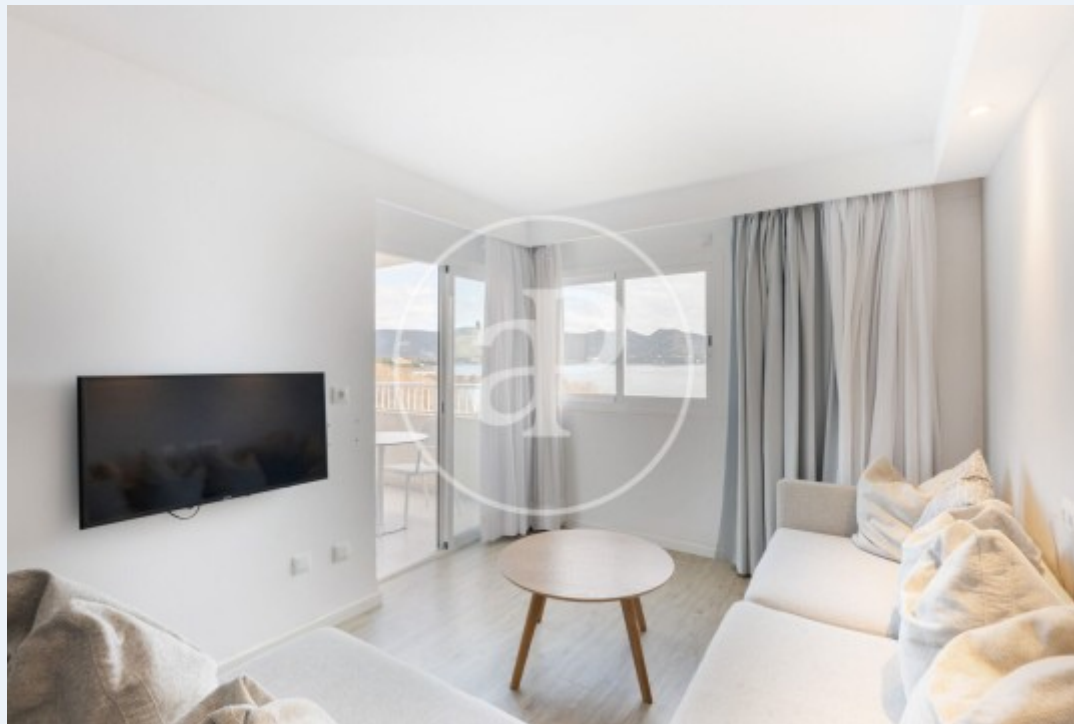
35 m²

Bedroom

1

Bathroom

1



Fully equipped apartment, with sea views, ideal for a quiet lifestyle, in the seaside resort of Cala Bona.

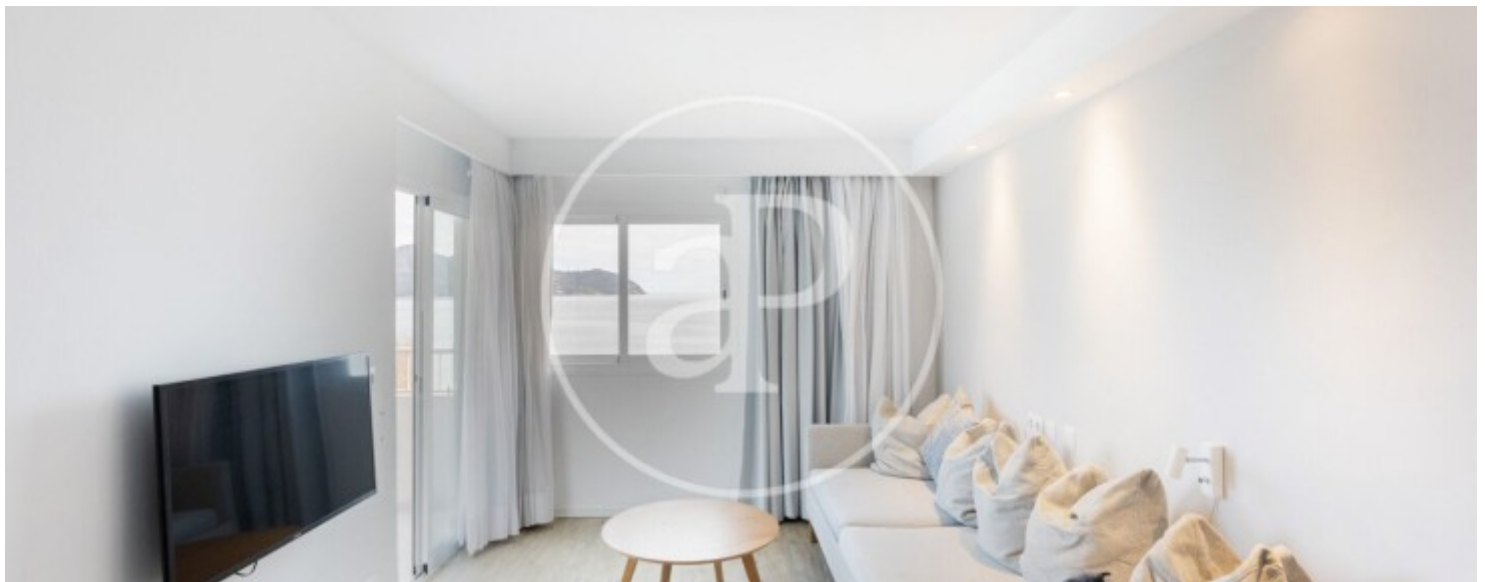
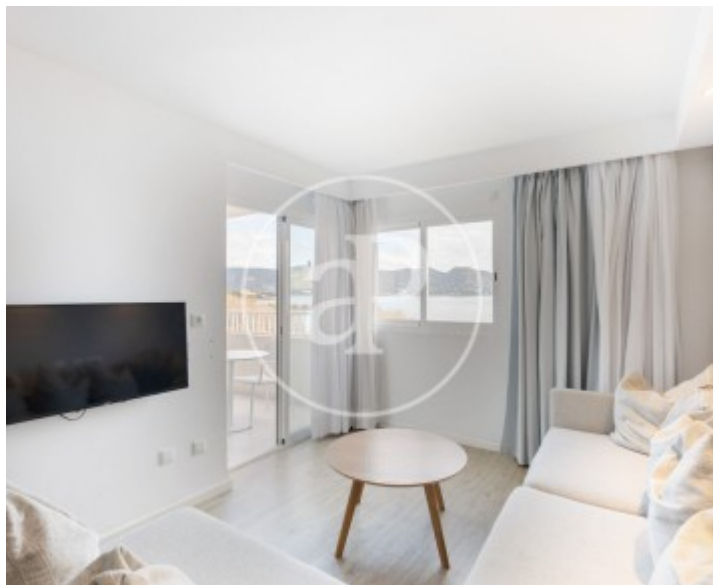
The access to the building has a beautiful garden area; inside, we have a common laundry area and spacious corridors, luminous and very well ventilated thanks to its large windows. As soon as we enter the flat, we find a spacious living room with an American style kitchen and a comfortable sofa. The bedroom has a double bed and fitted wardrobes. From both rooms, you can see the sea. The newly renovated bathroom has a shower and all the necessary bathroom equipment. The terrace invites

you to enjoy the outside life thanks to its gentle sea breeze and the ideal table for breakfast or dinner, reading or teleworking. Cala Bona is located on the east coast of the island. The complex belongs to the region of Llevant and is located in the municipality of Son Servera. Cala Bona is located in the centre of the bay of Artà and to the north of the village of Cala Millor. The promenade of Cala Bona has a beautiful panorama and offers benches to sit on and numerous cafés and restaurants. There is a bicycle path which is particularly...

Contact us,
we will be happy to assist you,
to offer you more details and information.

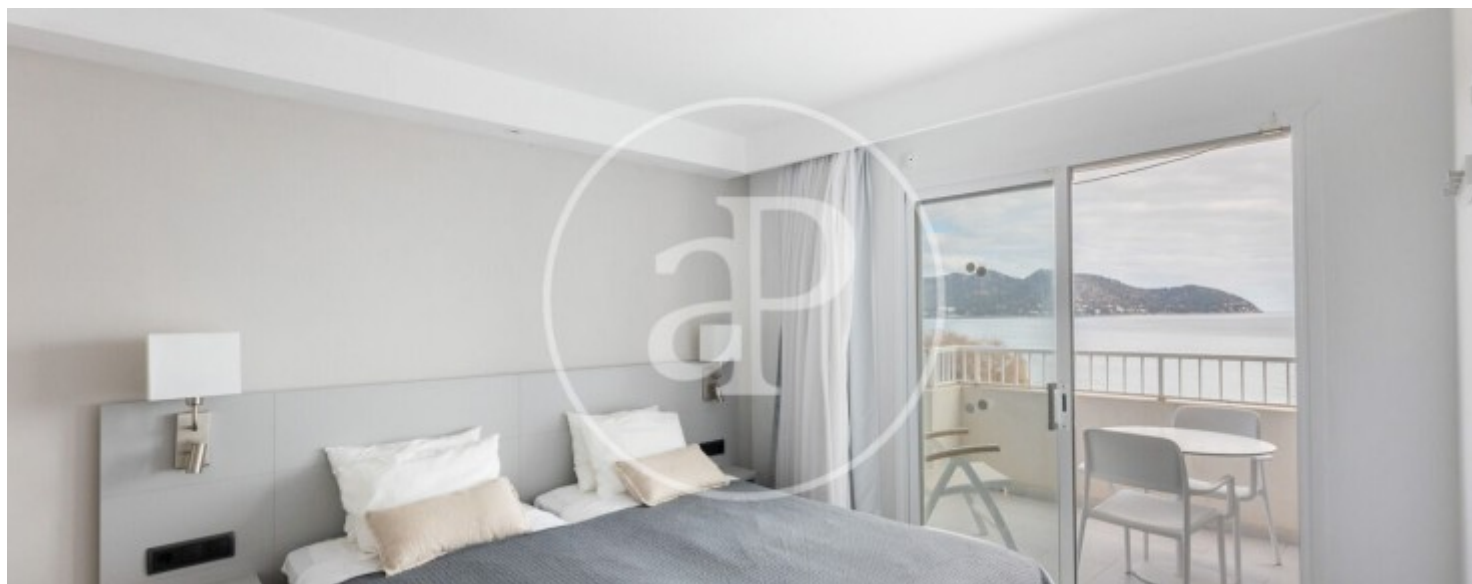
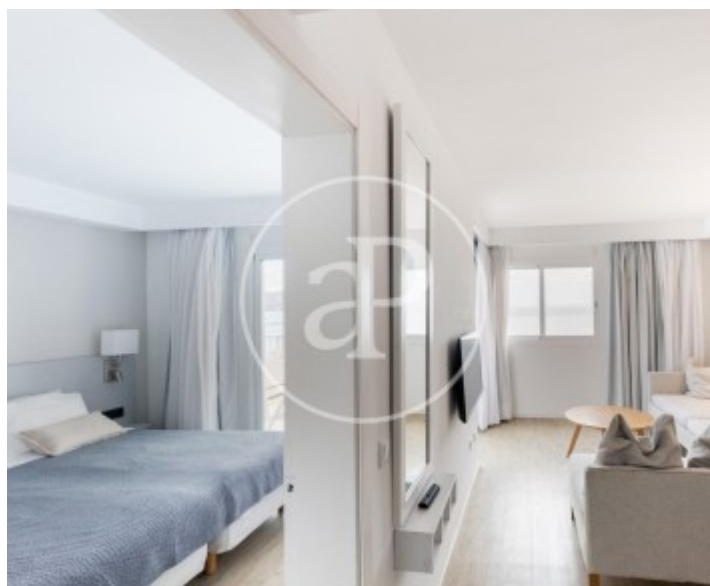
Cala Millor, Son Servera

REF. APM2302062



Cala Millor, Son Servera

REF. APM2302062



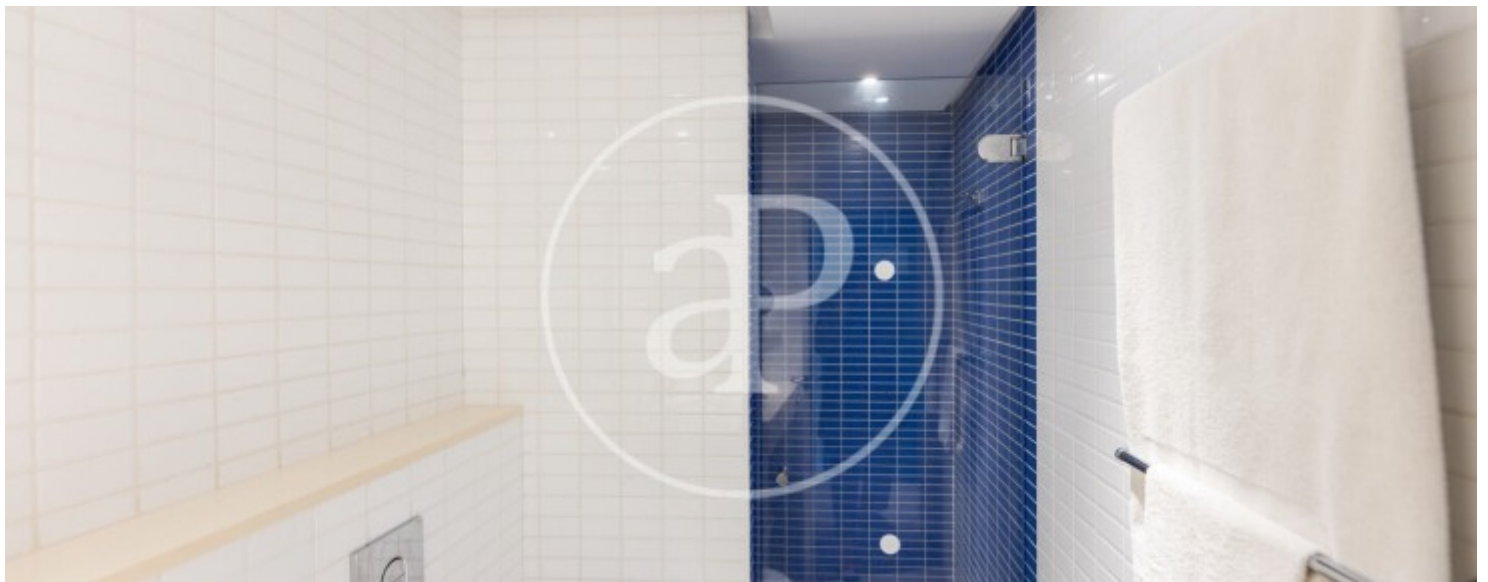


APROPERTIES
REAL ESTATE

Calle Unió 9
07001 Palma
T. 871 16 01 60
www.aproproperties.es

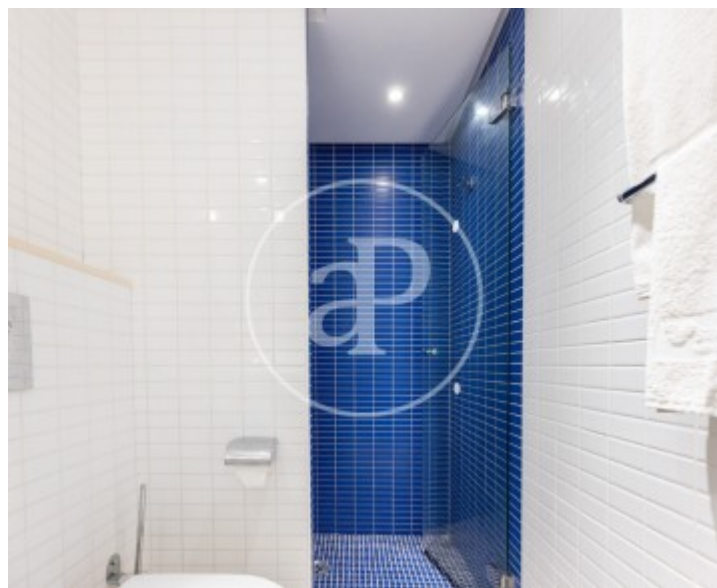
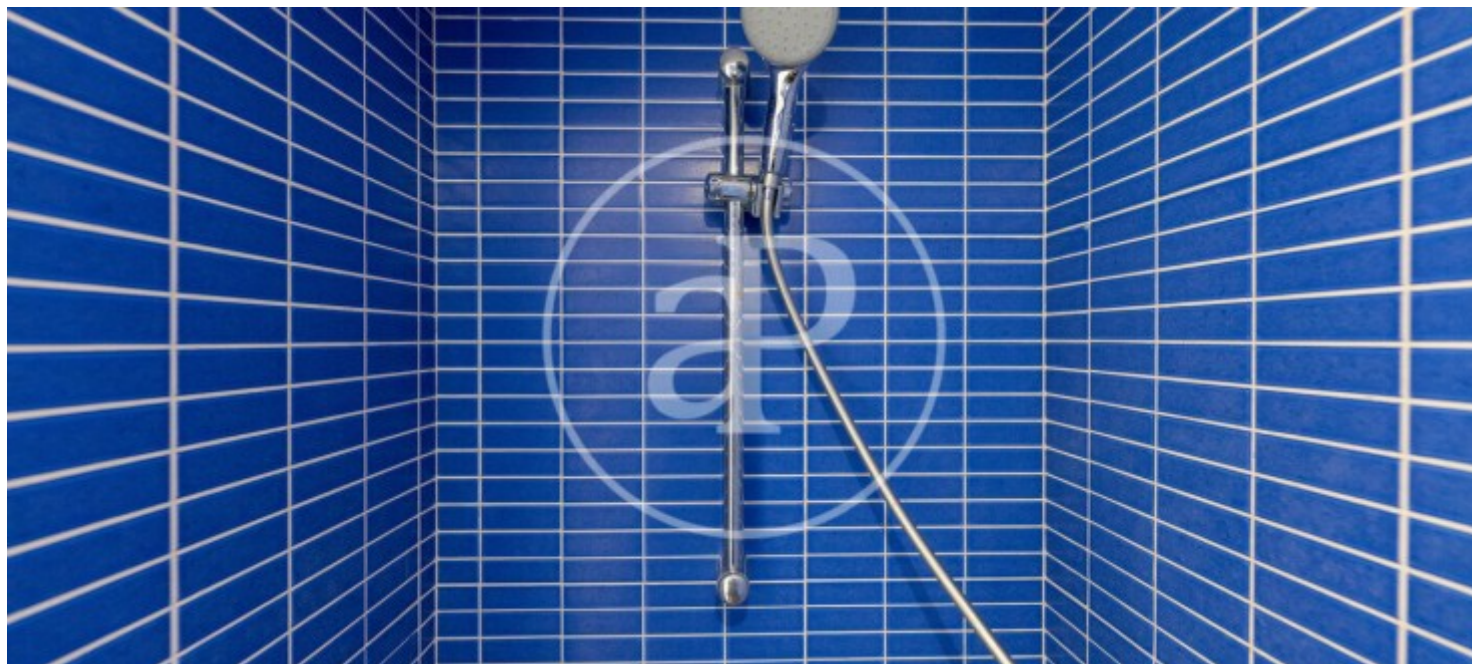
Cala Millor, Son Servera

REF. APM2302062



Cala Millor, Son Servera

REF. APM2302062



The information about any property is not binding to any offer or contract. Any verbal or written declaration made by aProperties with regards to the value or condition of the property should not be considered accurate or factual. The pictures make reference to some parts of the property at the times that they were taken. The areas, dimensions and distances that are given are approximate and should be checked by the client. The images are computer generated and are just an approximate indication of the real appearance of the property; these may change at any time. The information with regards to the property may also change at any time.



For **more information** or
to make an appointment

apropertiespalma@aproperties.es
Tel: 871 16 01 60
www.aproperties.es