

Cala Millor, Son Servera

REF. APMS2309028

House for rent with direct access to the beach in Port Nou

Features

Surface

200 m²

Bedrooms

2

Bathroom

1

- ✓ Furnished
- ✓ Terrace
- ✓ Has parking

Price

2,200 €



AVAILABLE FOR SHORT STAY, FROM OCTOBER TO MAY.

It is a house of 140 sqm plus terrace with direct access to a small beach in Port Nou. It has a large fully equipped kitchen with central island and a living-dining room with unique sea views. On the upper floor there are two bedrooms, one with spectacular sea views and the other at the back of the house. Both bedrooms are spacious and between them there is a large bathroom from which you can see the sea while you are in the shower. The house has a front terrace of 20 sqm with direct access to the sea and an esplanade on the right side that connects the back and the front. In addition, there is a storage room at the

entrance next to the space that can be used for parking and another parking space in the immediate vicinity. The area of Port Nou, belonging to Son Servera, offers a multitude of services just a few kilometres away, as well as shops and restaurants. It is located in a unique enclave in which to enjoy the east of the island. The most important nearby towns are Cala Millor, Son Servera, Artà and Capdepera. Can you imagine living here, we are waiting for your call!

Contact us,
we will be happy to assist you,
to offer you more details and information.

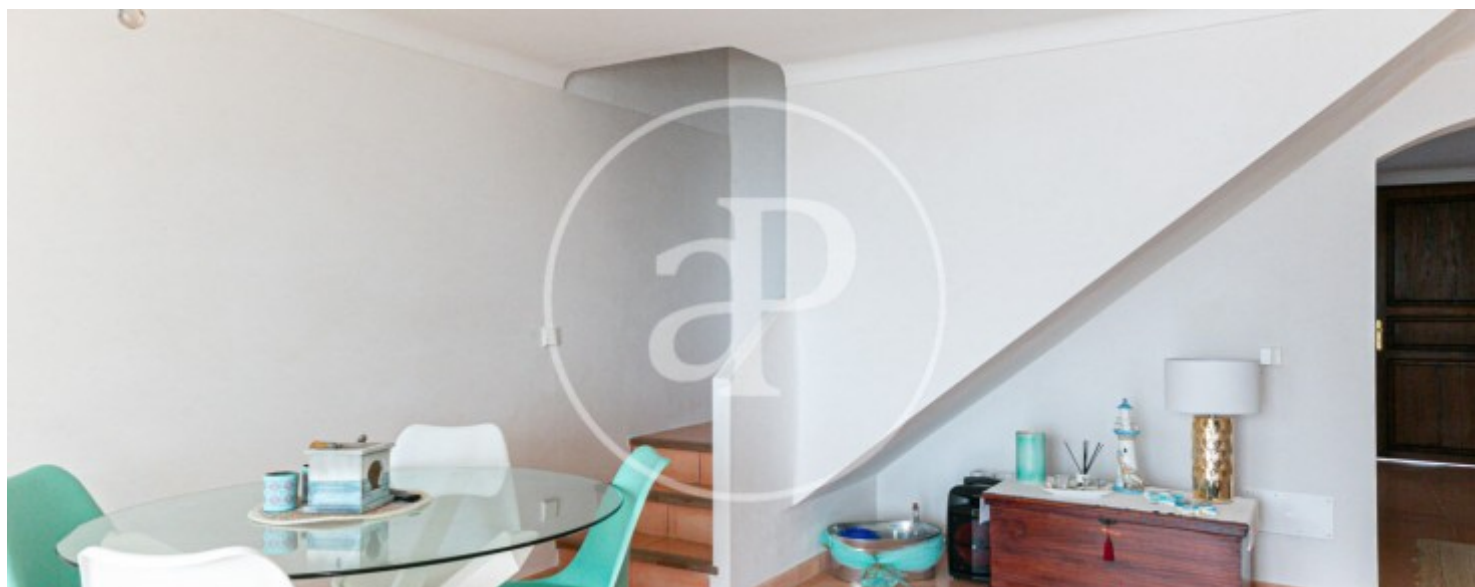
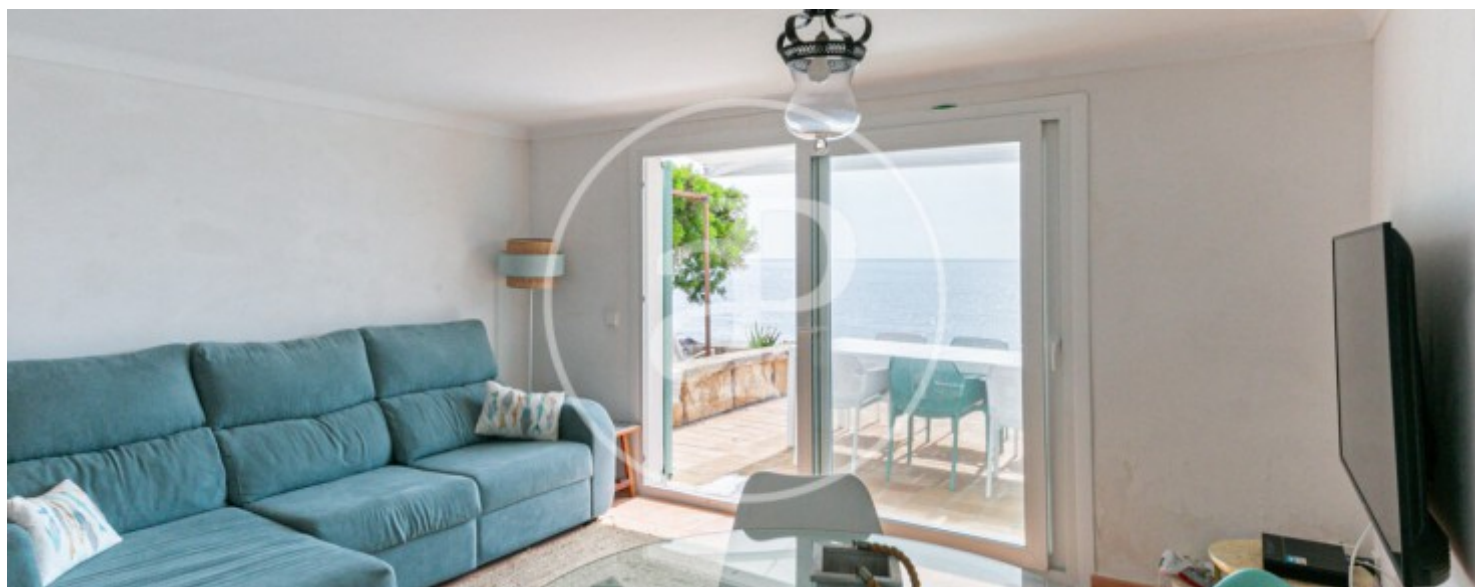
Cala Millor, Son Servera

REF. APMS2309028



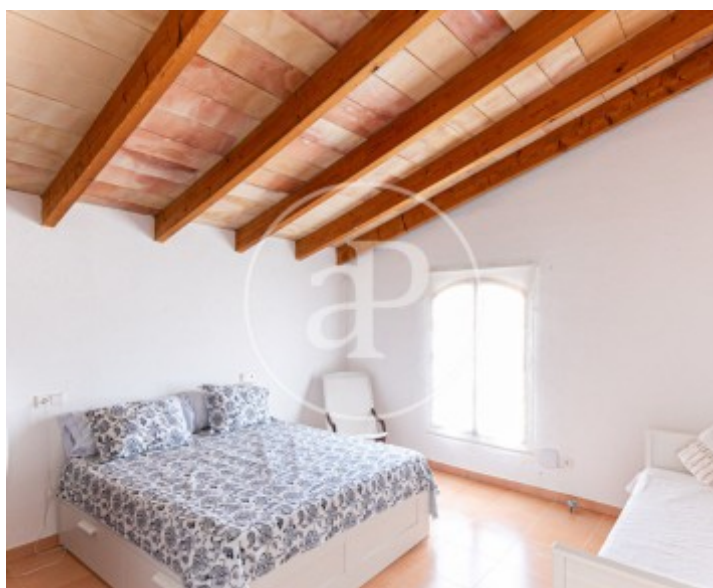
Cala Millor, Son Servera

REF. APMS2309028



Cala Millor, Son Servera

REF. APMS2309028



Cala Millor, Son Servera

REF. APMS2309028



The information about any property is not binding to any offer or contract. Any verbal or written declaration made by aProperties with regards to the value or condition of the property should not be considered accurate or factual. The pictures make reference to some parts of the property at the times that they were taken. The areas, dimensions and distances that are given are approximate and should be checked by the client. The images are computer generated and are just an approximate indication of the real appearance of the property; these may change at any time. The information with regards to the property may also change at any time.

For **more information** or
to make an appointment

apropertiespalma@aproperties.es
Tel: 871 16 01 60
www.aproperties.es