

Sineu Centro, Sineu

REF. VPM2605010

# House for sale in Lloret de Vistalegre

## Features

- ✓ Views
- ✓ Heating
- ✓ Boxroom
- ✓ AACC
- ✓ Terrace
- ✓ Backyard
- ✓ Pool
- ✓ Has parking

Surface

**520 m<sup>2</sup>**

Bedrooms

**4**

Bathrooms

**3**

Price

**950,000 €**



## Aproperties exclusively presents this gem in the most authentic heart of Mallorca.

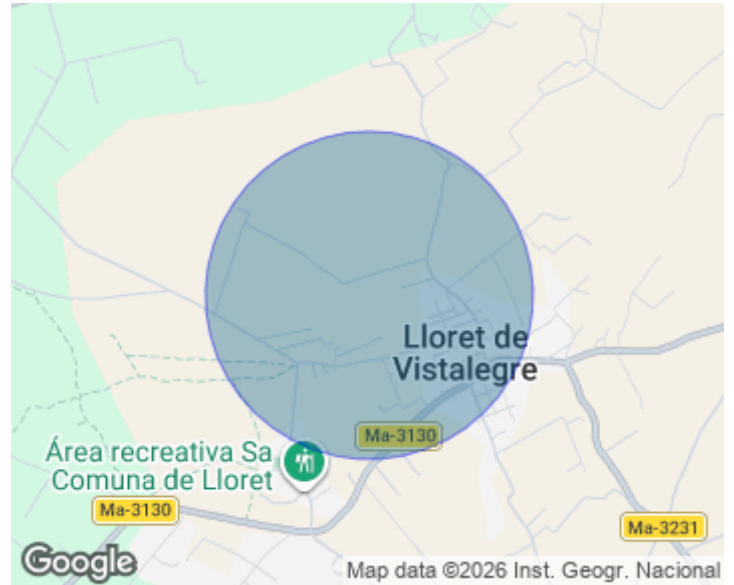
In the charming village of Lloret de Vistalegre lies this wonderful property surrounded by nature, privacy and the unmistakable charm of Mallorcan living. Located next to an environmental preservation park and close to a sports complex with multiple facilities, including padel schools, this estate offers a serene setting where greenery dominates the landscape and time seems to stand still. A place to wake up to birdsong, breathe fresh air and enjoy sunsets among almond trees, gardens and dozens of mature fruit trees. The property sits on a spacious plot of over 2,200 m<sup>2</sup>,

carefully maintained, offering corners full of peace, natural shade and absolute privacy. The main house, in authentic Mallorcan style, combines tradition and generous proportions. It features 4 bedrooms, 3 bathrooms, a bright and spacious living room and a pleasant terrace ideal for long summer dinners or peaceful mornings overlooking the garden. Outside, the swimming pool blends perfectly into the vegetation and landscaped areas, creating a unique and welcoming Mediterranean atmosphere. In addition, the estate includes a charming independent guest house, located in a more private and...

**Contact us,**  
we will be happy to assist you,  
to offer you more details and information.

Sineu Centro, Sineu

REF. VPM2605010



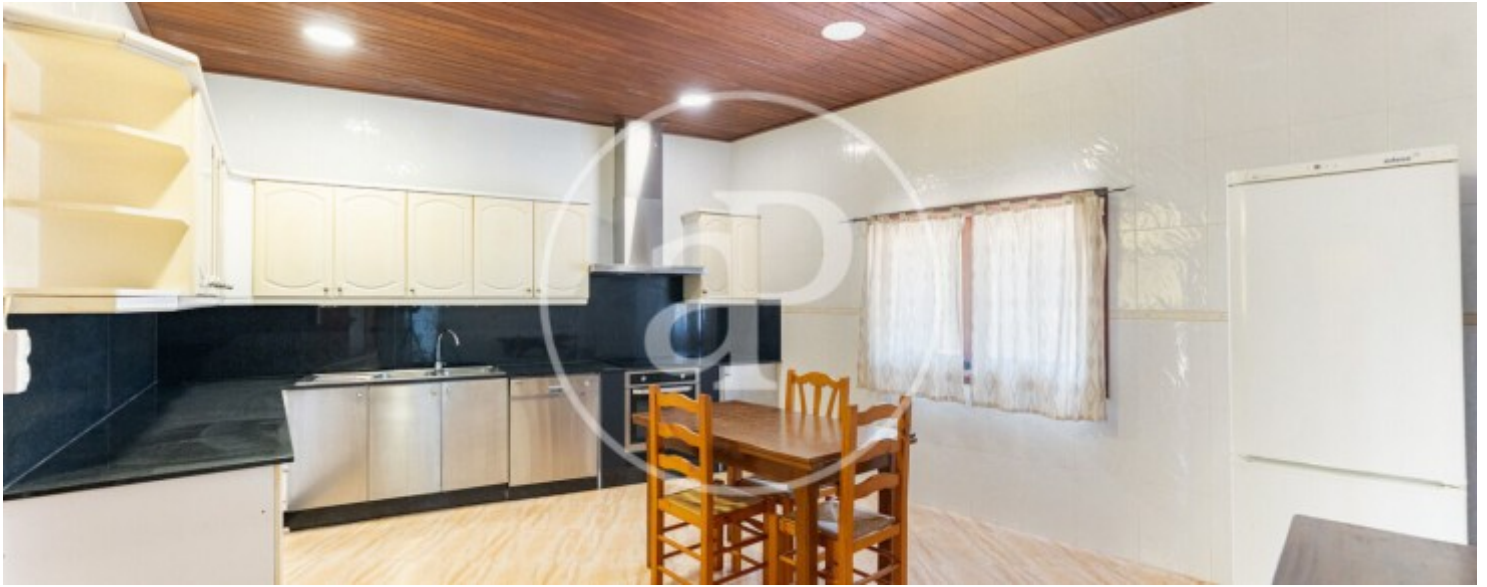
Sineu Centro, Sineu

REF. VPM2605010



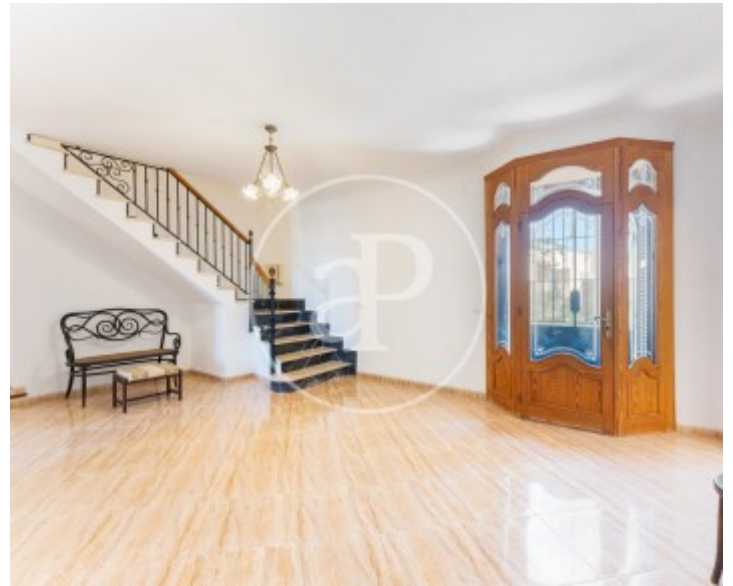
Sineu Centro, Sineu

REF. VPM2605010



Sineu Centro, Sineu

REF. VPM2605010



The information about any property is not binding to any offer or contract. Any verbal or written declaration made by aProperties with regards to the value or condition of the property should not be considered accurate or factual. The pictures make reference to some parts of the property at the times that they were taken. The areas, dimensions and distances that are given are approximate and should be checked by the client. The images are computer generated and are just an approximate indication of the real appearance of the property; these may change at any time. The information with regards to the property may also change at any time.

For **more information** or  
to make an appointment

[apropertiespalma@aproperties.es](mailto:apropertiespalma@aproperties.es)  
Tel: 871 16 01 60  
[www.aproperties.es](http://www.aproperties.es)