

Sineu Centro, Sineu

REF. APM2506020

House for Rent in Costitx

Features

- ✓ Views
- ✓ Heating
- ✓ Furnished
- ✓ Boxroom
- ✓ AACC
- ✓ Terrace
- ✓ Backyard
- ✓ Pool
- ✓ Has parking

Surface

160 m²

Bedrooms

3

Bathrooms

3



Price

2,000 €

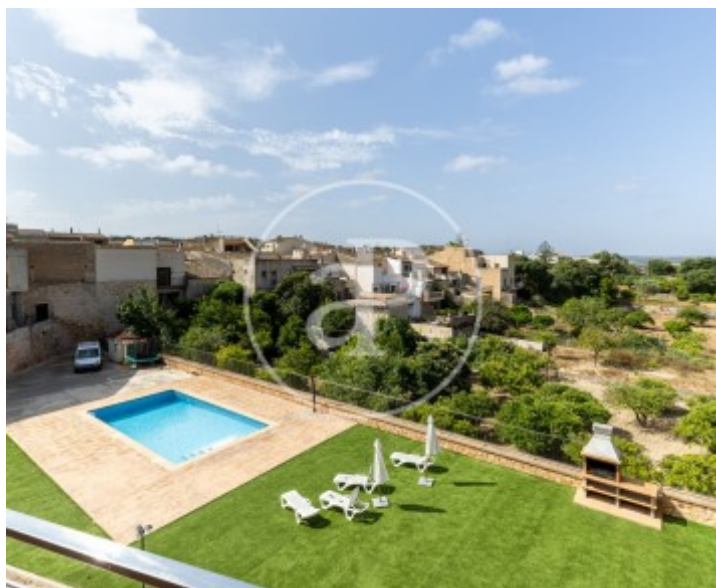
SPACIOUS FAMILY HOME IN COSTITX WITH TERRACES, GARAGE, AND COMMUNITY AREA In the charming village of Costitx, just 30 minutes from Palma, you'll find this bright three-story house located in a quiet residential complex of only seven neighbors. Perfect for a family seeking space, comfort, and quality of life in the heart of Mallorca, with all services nearby and surrounded by nature. On the main floor, with direct access from the street, there's a cozy living-dining room with a fireplace that opens to a 10?sqm terrace with an awning and open views of the green surroundings. The independent kitchen is fully equipped and provides everything needed for daily living. Upstairs are the three bedrooms: two share a full bathroom, and the master bedroom features an en-suite bathroom and a private t

errace with open views of the village and surrounding nature. The lower floor houses the laundry area and a multipurpose room perfect as an office, playroom, or additional bedroom. From here, there is direct access to the private garage, with space for two vehicles and an exit to the community areas. The community features a large swimming pool, spacious communal areas, and a children's playground—creating the ideal environment for family enjoyment in complete tranquility. Available for long-term rental, this property is a unique opportunity to live with quality, space, and a...

Contact us,
we will be happy to assist you,
to offer you more details and information.

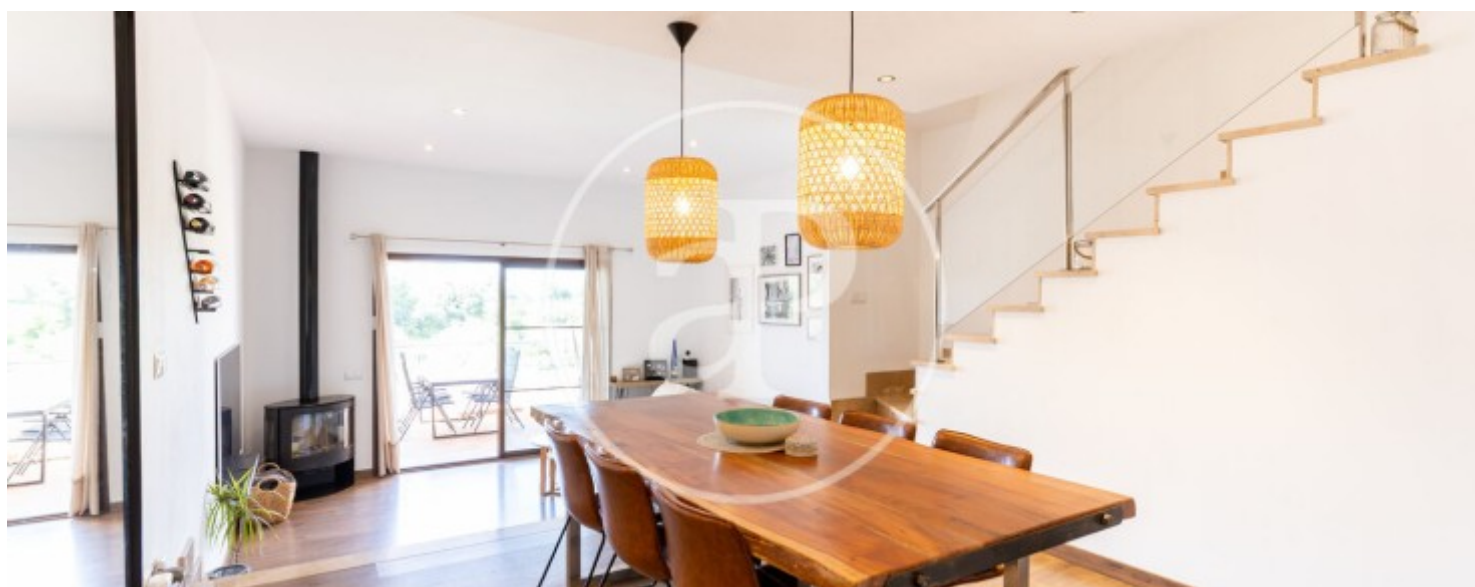
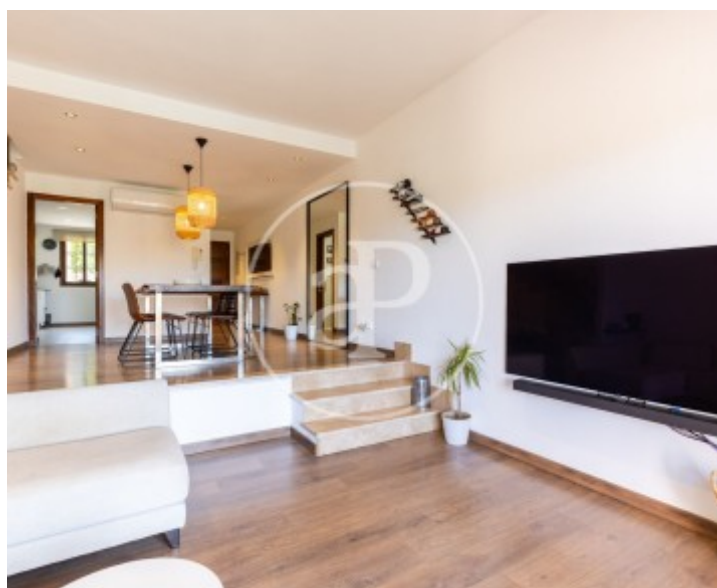
Sineu Centro, Sineu

REF. APM2506020



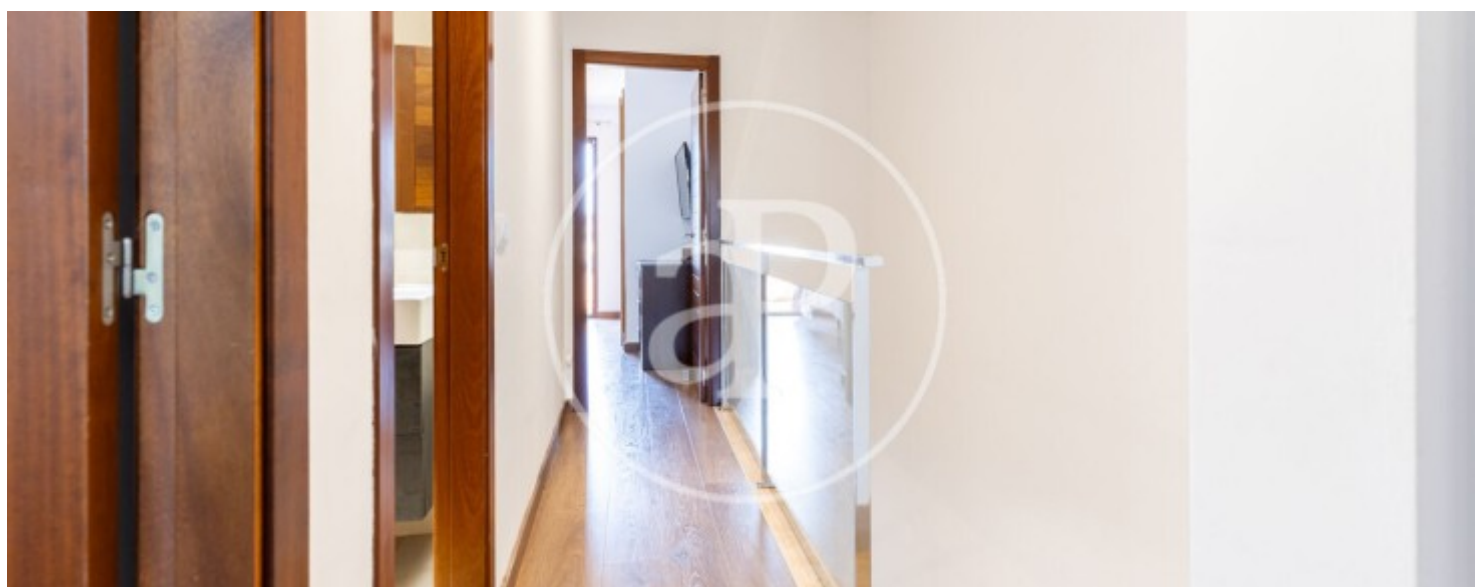
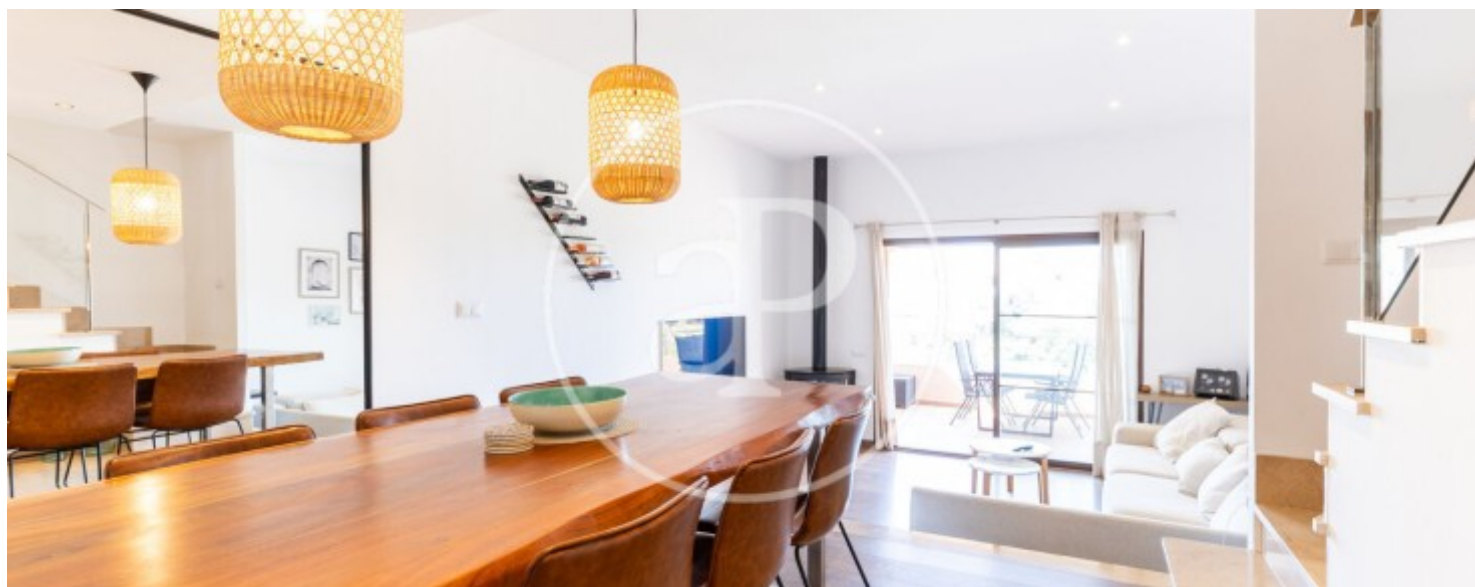
Sineu Centro, Sineu

REF. APM2506020



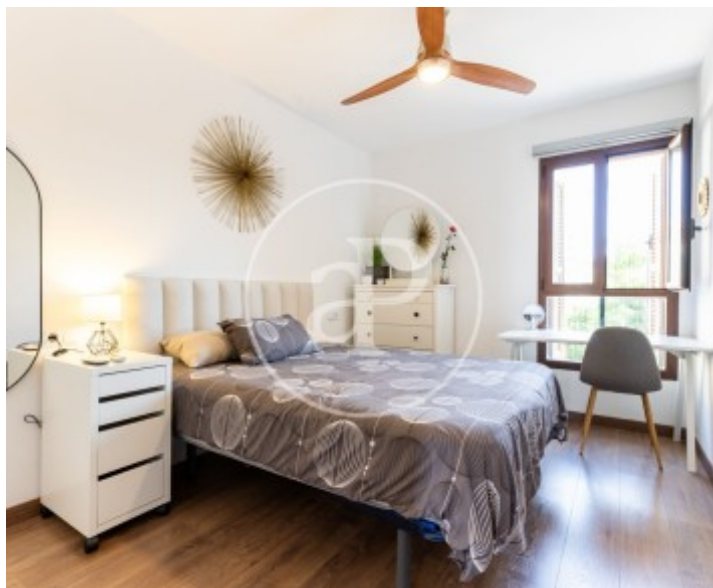
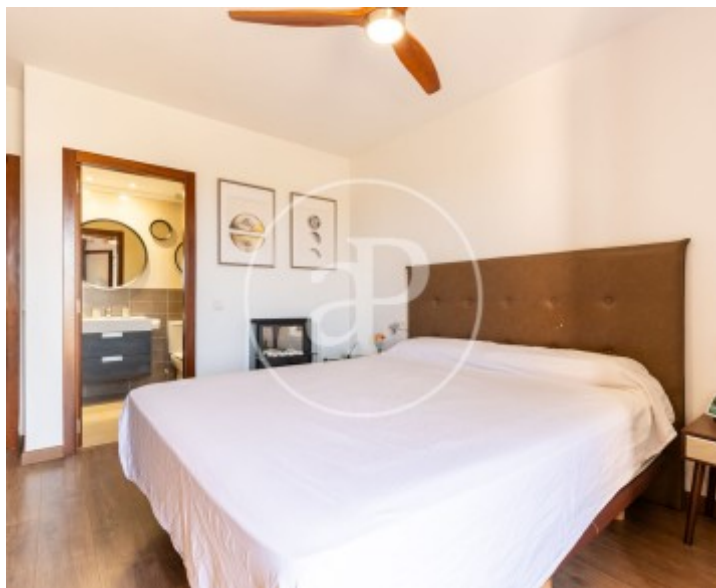
Sineu Centro, Sineu

REF. APM2506020



Sineu Centro, Sineu

REF. APM2506020



The information about any property is not binding to any offer or contract. Any verbal or written declaration made by aProperties with regards to the value or condition of the property should not be considered accurate or factual. The pictures make reference to some parts of the property at the times that they were taken. The areas, dimensions and distances that are given are approximate and should be checked by the client. The images are computer generated and are just an approximate indication of the real appearance of the property; these may change at any time. The information with regards to the property may also change at any time.

For **more information** or
to make an appointment

apropertiespalma@aproperties.es
Tel: 871 16 01 60
www.aproperties.es