



Serra

REF. VV2512014

House for sale with Terrace in Serra

Features

- ✓ Heating
- ✓ AACC
- ✓ Backyard
- ✓ Security
- ✓ Has parking
- ✓ Boxroom
- ✓ Terrace
- ✓ Pool
- ✓ Concierge

Price

700,000 €

Surface

558 m²

Plot surface

4,065 m²

Bedrooms

8

Bathrooms

5



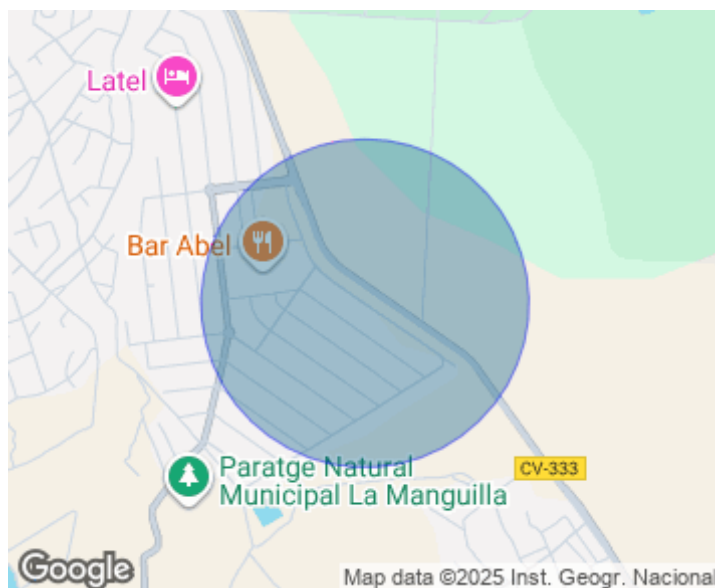
WELCOME TO THE OASIS OF YOUR DREAMS IN A GATED COMMUNITY WITH 24-HOUR SECURITY aProperties is pleased to present this impressive villa located in one of the most sought-after areas of Serra, within the exclusive Torres de Porta Coeli residential community. This charming villa, with a total built area of 558 m², is set on a private 4,065 m² oasis surrounded by mature trees, lush vegetation and the friendly presence of squirrels, adding life and serenity to the surroundings. The property even offers the possibility of creating your own fish pond, adding an even more special touch in perfect harmony with nature. It is an ideal place for families: your children and you can enjoy nature without leaving home, living every day in a peaceful, green and healthy environment. At the same time, you will

enjoy the convenience of being very close to Valencia city, combining the best of natural living with urban proximity. Property Description The home is distributed across three floors. Main Floor Accessed through an elegant hall. This level features a spacious living room with a fireplace, ideal for family moments. The fully independent kitchen includes space for a daily dining area and is complemented by a laundry room. Additionally, this level offers 4 bedrooms, one of them a suite with a full bathroom and private terrace. In total, the main floor includes 5 spacious bedrooms and 2 full...

Contact us,
we will be happy to assist you,
to offer you more details and information.

Serra

REF. VV2512014



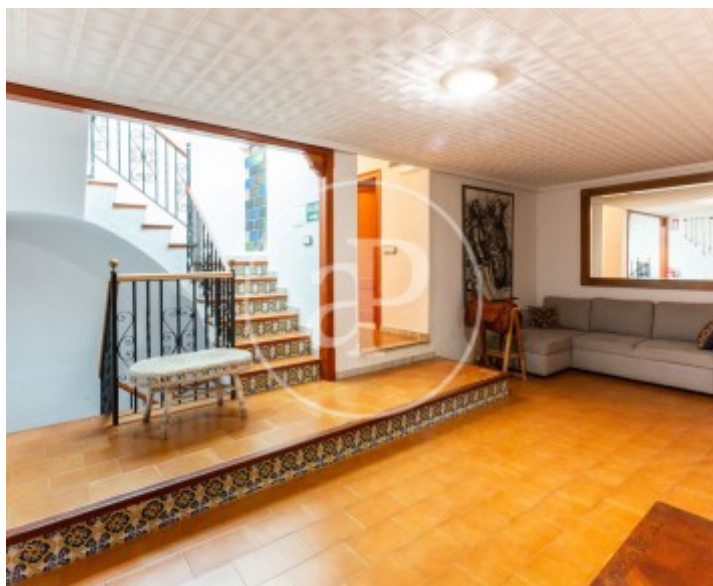
Serra

REF. VV2512014



Serra

REF. VV2512014



Serra

REF. VV2512014



The information about any property is not binding to any offer or contract. Any verbal or written declaration made by aProperties with regards to the value or condition of the property should not be considered accurate or factual. The pictures make reference to some parts of the property at the times that they were taken. The areas, dimensions and distances that are given are approximate and should be checked by the client. The images are computer generated and are just an approximate indication of the real appearance of the property; these may change at any time. The information with regards to the property may also change at any time.

For **more information** or
to make an appointment

apropertiesvalencia@aproperties.es
Tel: 96 128 59 65
www.aproperties.es