



Serra

REF. VV2511034

House for sale with Terrace in Serra

Features

- ✓ Views
- ✓ Boxroom
- ✓ Terrace
- ✓ Pool
- ✓ Heating
- ✓ AACC
- ✓ Backyard
- ✓ Has parking

Surface

330 m²

Bedrooms

7

Bathrooms

3

Price

665,000 €



Spacious 330 m² home with 7 bedrooms, a swimming pool, and a 1,348 m² plot, located in a residential area with full services and 24-hour security.

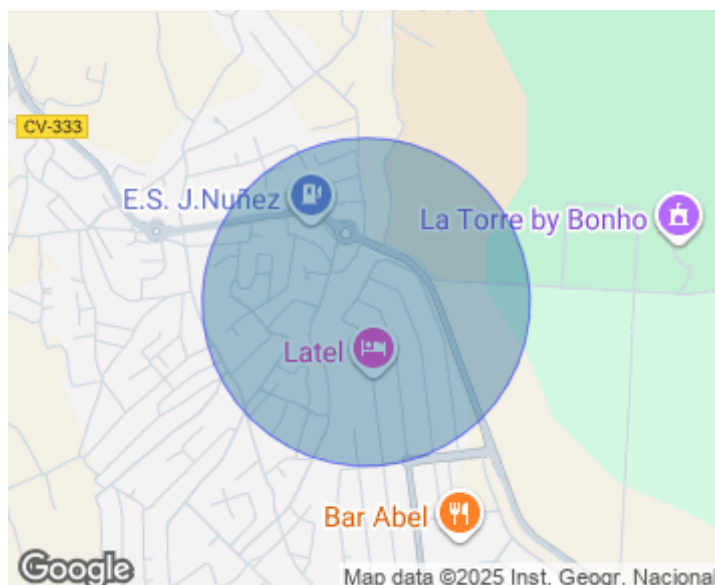
aProperties is pleased to present this spectacular chalet located in the prestigious Torre de Porta Coeli residential area (Serra), surrounded by nature and offering every service at your fingertips: 24-hour private security, sports centre with swimming pool and sports courts, bakery, supermarket, pharmacy, hairdresser and bars. The house is highly functional, with access adapted for people with reduced mobility and offering great spaciousness and comfort in all its rooms, in a privileged environment. The ground

floor contains most of the living space, featuring six bedrooms —three of them large and the other three of standard size, all with custom-built fitted wardrobes— two very spacious full bathrooms, and a bright living room next to an independent kitchen with ample storage capacity. The upper floor hosts a large attic, a multifunctional space currently equipped with four beds, ideal as a bedroom, office or playroom, and which also has access to a private terrace that provides additional outdoor space with excellent views. The property stands out for its abundant storage space...

Contact us,
we will be happy to assist you,
to offer you more details and information.

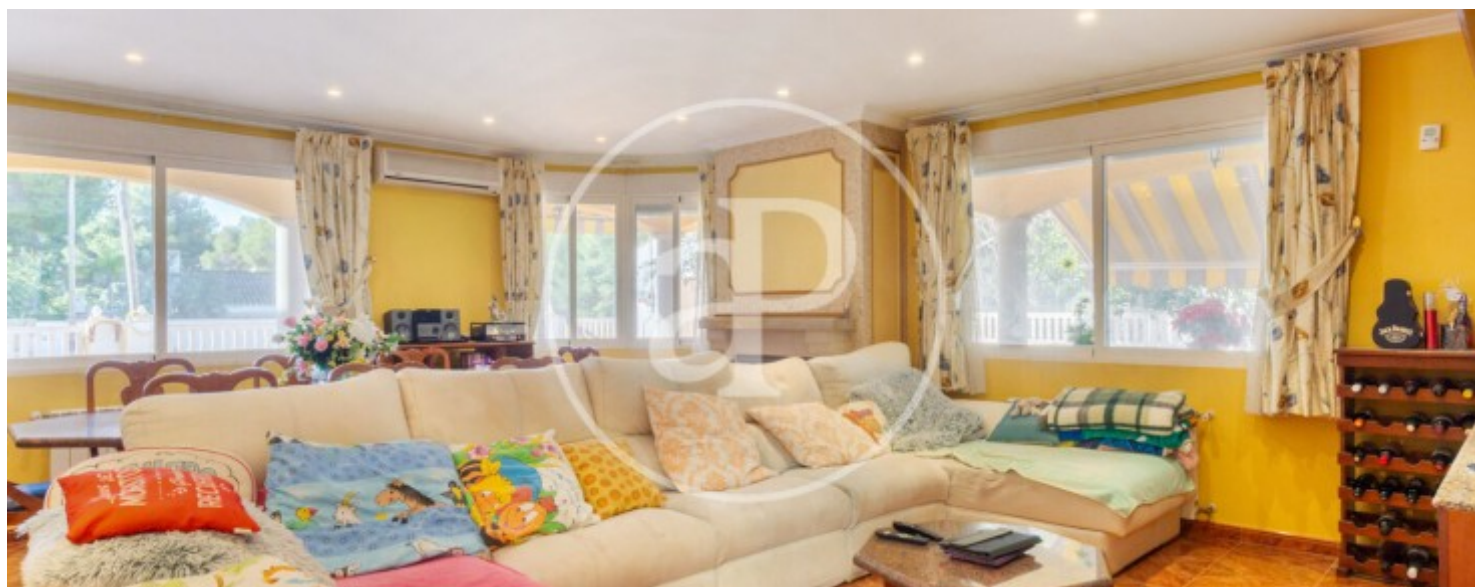
Serra

REF. VV2511034



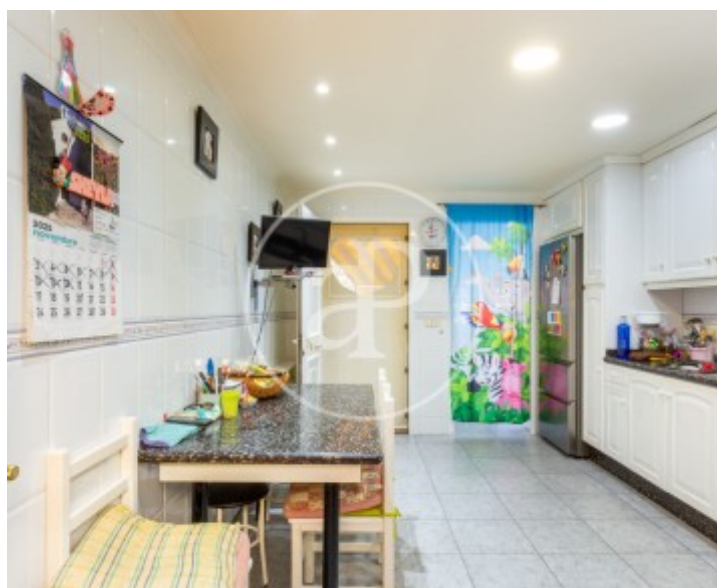
Serra

REF. VV2511034



Serra

REF. VV2511034



Serra

REF. VV2511034



The information about any property is not binding to any offer or contract. Any verbal or written declaration made by aProperties with regards to the value or condition of the property should not be considered accurate or factual. The pictures make reference to some parts of the property at the times that they were taken. The areas, dimensions and distances that are given are approximate and should be checked by the client. The images are computer generated and are just an approximate indication of the real appearance of the property; these may change at any time. The information with regards to the property may also change at any time.

For **more information** or
to make an appointment

apropertiesvalencia@aproperties.es
Tel: 96 128 59 65
www.aproperties.es