

Selva

REF. APM2404028



House for rent in Mancor de la Vall

Features

- ✓ Views
- ✓ Heating
- ✓ Furnished
- ✓ AACC
- ✓ Terrace
- ✓ Backyard
- ✓ Pool
- ✓ Has parking

Price

2,950 €

Surface

360 m²

Bedrooms

5

Bathrooms

6



This impressive house offers an oasis of tranquillity and comfort in the midst of nature, with panoramic views of the mountains of Mallorca and a swimming pool.

With a total of five spacious double bedrooms, each with en-suite bathroom, this property offers ideal space and privacy. The master bedroom features a luxurious walk-in dressing room, adding a touch of luxury and comfort to the living experience here. The house comes with parking spaces to ensure the comfort of your vehicles. Located in a very quiet area in the middle of the island of Mallorca. With a living area of 360 square metres, this house offers ample space to live and enjoy. In addition, it has a

large terrace of 40 square metres, perfect for relaxing outdoors, as well as a pool area of another 40 square metres, ideal for enjoying the Mediterranean climate. The house is equipped with heating and air conditioning. The kitchen is fully equipped with modern appliances, offering a functional and elegant space for cooking. The interior of the house presents a modern and minimalist design, offering a bright and cosy atmosphere in every corner. It comes unfurnished, allowing you to personalise and decorate according to your tastes and needs. In addition, the property has two living rooms,...

Contact us,
we will be happy to assist you,
to offer you more details and information.



APROPERTIES
REAL ESTATE

Calle Unió 9
07001 Palma
T. 871 16 01 60
www.aproperties.es

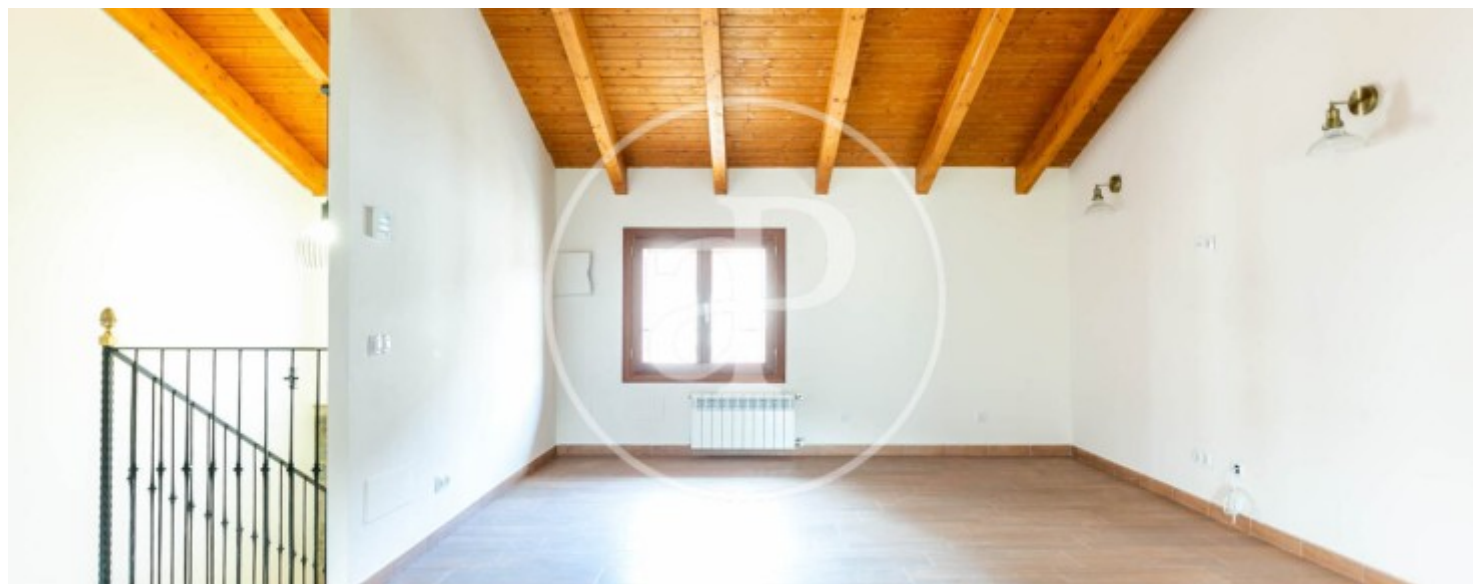
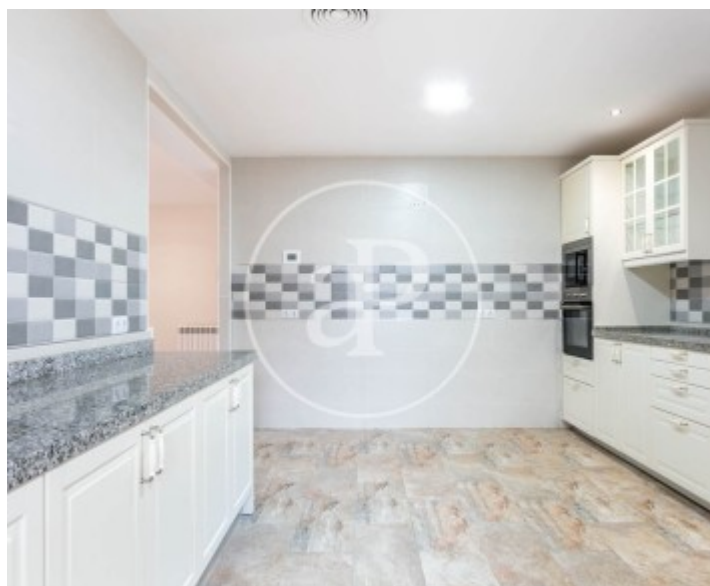
Selva

REF. APM2404028



Selva

REF. APM2404028



Selva

REF. APM2404028





APROPERTIES
REAL ESTATE

Calle Unió 9
07001 Palma
T. 871 16 01 60
www.aproperties.es

Selva

REF. APM2404028



The information about any property is not binding to any offer or contract. Any verbal or written declaration made by aProperties with regards to the value or condition of the property should not be considered accurate or factual. The pictures make reference to some parts of the property at the times that they were taken. The areas, dimensions and distances that are given are approximate and should be checked by the client. The images are computer generated and are just an approximate indication of the real appearance of the property; these may change at any time. The information with regards to the property may also change at any time.



For **more information** or
to make an appointment

apropertiespalma@aproperties.es
Tel: 871 16 01 60
www.aproperties.es