

Selva

REF. APM2607008

# Village House with Garden for Rent in Selva

## Features

- ✓ Views
- ✓ Heating
- ✓ Furnished
- ✓ Boxroom
- ✓ AACC
- ✓ Terrace
- ✓ Backyard

Surface

**550 m<sup>2</sup>**

Bedrooms

**4**

Bathrooms

**3**



Price

**2,500 €**

## ALSO AVAILABLE FOR SHORT-TERM RENTAL

Nestled in the charming village of Selva, one of the most picturesque locations in the heart of Mallorca, this distinctive home offers the opportunity to enjoy a peaceful lifestyle surrounded by nature, just a few minutes from Inca, 15 minutes from Pollença and the Bay of Alcúdia, and at the foot of the majestic Tramuntana Mountains. Preserving all the charm and authenticity of traditional Mallorcan architecture, this exceptional property stands out for its unique character, warm atmosphere and timeless appeal, making it the perfect home for those seeking an authentic Mediterranean lifestyle. The property offers 370 m<sup>2</sup> of living space distributed over three floors, with spacious, light-filled interiors and versatile living areas. It features four

bedrooms and three bathrooms, providing an ideal layout for families or anyone looking for a home with flexible living spaces. The ground floor comprises two bedrooms, an elegant entrance hall, a welcoming living and dining room, and a fully equipped traditional kitchen, perfect for preparing meals and enjoying time with family and friends in a warm and inviting setting. The first floor impresses with its generous open-plan layout and high ceilings, creating a remarkable sense of space. This level also features a cosy fireplace and two large open rooms without partitions, offering endless...

**Contact us,**  
we will be happy to assist you,  
to offer you more details and information.

Selva

REF. APM2607008





APROPERTIES  
REAL ESTATE

Calle Unió 9  
07001 Palma  
T. 871 16 01 60  
[www.aproperties.es](http://www.aproperties.es)

Selva

REF. APM2607008



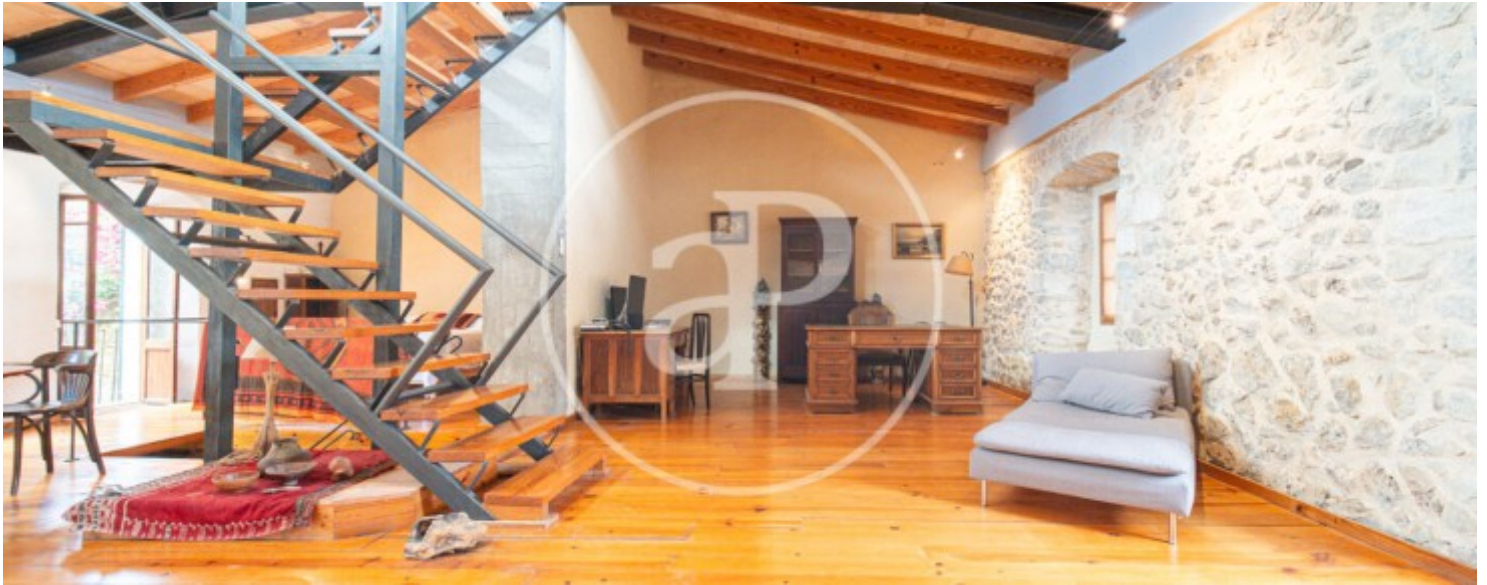


APROPERTIES  
REAL ESTATE

Calle Unió 9  
07001 Palma  
T. 871 16 01 60  
[www.aproperties.es](http://www.aproperties.es)

Selva

REF. APM2607008



Selva

REF. APM2607008



The information about any property is not binding to any offer or contract. Any verbal or written declaration made by aProperties with regards to the value or condition of the property should not be considered accurate or factual. The pictures make reference to some parts of the property at the times that they were taken. The areas, dimensions and distances that are given are approximate and should be checked by the client. The images are computer generated and are just an approximate indication of the real appearance of the property; these may change at any time. The information with regards to the property may also change at any time.

For **more information** or  
to make an appointment

[apropertiespalma@aproperties.es](mailto:apropertiespalma@aproperties.es)  
Tel: 871 16 01 60  
[www.aproperties.es](http://www.aproperties.es)