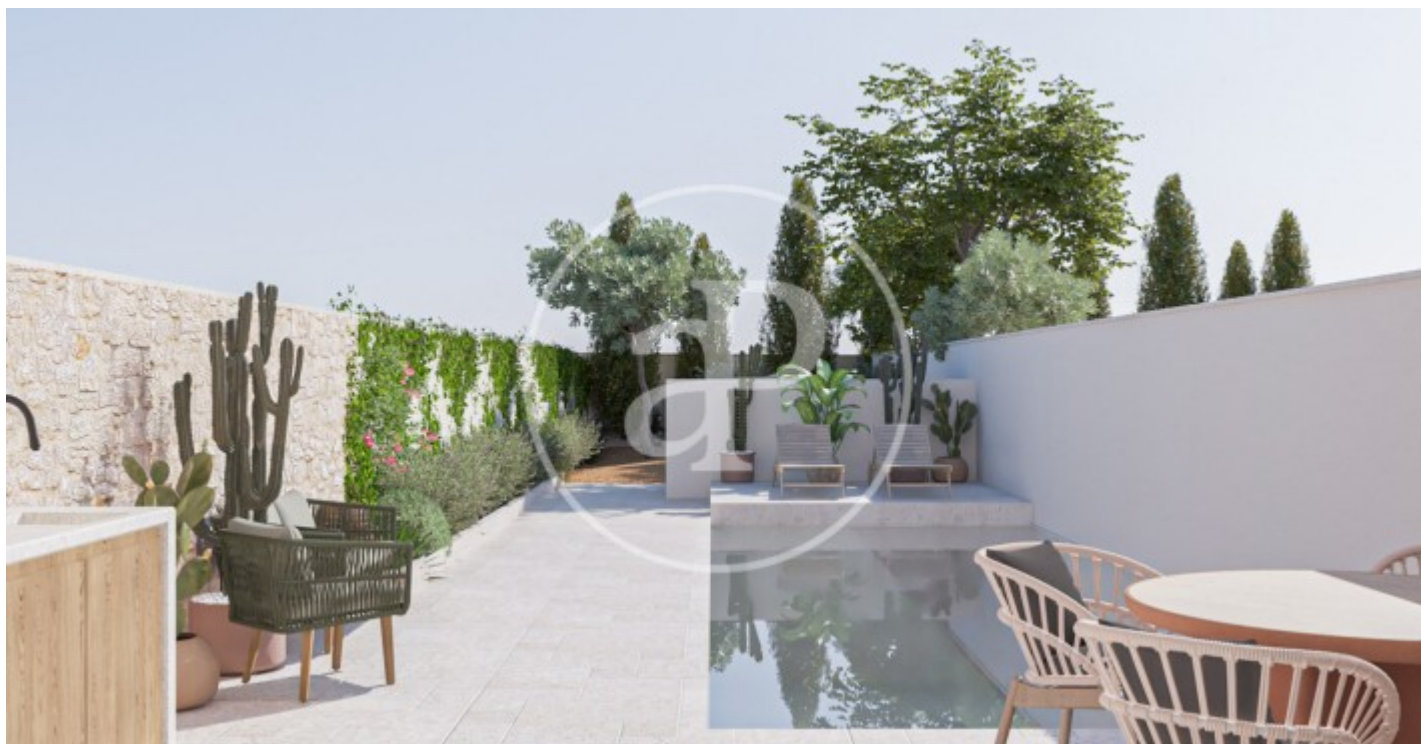


(Santanyí Pueblo)

Ref: ONPM2310010



House for sale in Santanyi

These four semi-detached houses are located in Santanyí, one of the most beautiful areas of the island, famous for its coves and beaches such as Caló d'es Moro or Es Trenc. Within walking distance, all kinds of services as well as a wide range of leisure activities; the most varied restaurants, bars with terraces, shops, etc, which will captivate you without a doubt. The idiosyncrasy of this marvellous locality is captured in each one of these properties, using Mallorcan stone, water and vegetation as the main essence in each one of them. This magnificent development consists of FOUR UNITS of 227sqm, 182 useful divided over two floors. The 4 properties have garage, beautiful back garden with saline chlorination pool, outdoor kitchen and optional jacuzzi. It is important to note that the project is subject to modifications depending on the preferences or tastes of the client. The homes have been designed using sustainable and local materials; porcelain flooring, wooden carpentry and good thermal insulation. Following these criteria, these four unique homes have been designed, each with its own style. All of them have 3 bedrooms and 2 bathrooms on the first floor, pl [...]

Santanyí / Santanyí Pueblo

Surface
227 m² - 227 m²

Units

4

Completion
Q4 2025

- ✓ Views
- ✓ Heating
- ✓ Boxroom
- ✓ AACC
- ✓ Terrace
- ✓ Backyard
- ✓ Pool
- ✓ Gym
- ✓ Lift
- ✓ Has parking

Price from 1,200,000 €



(Santanyí Pueblo)

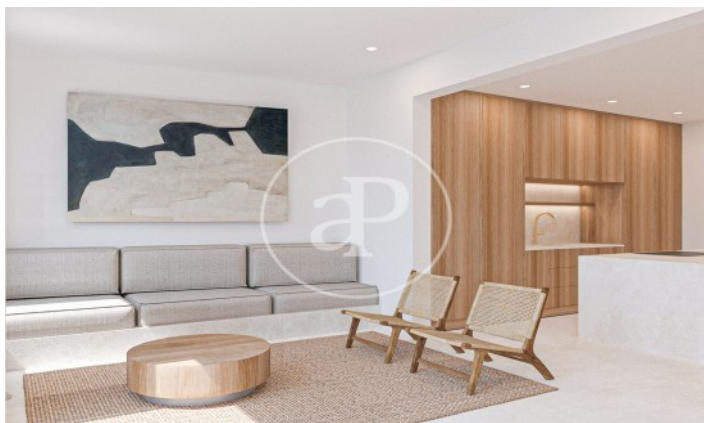
Ref: ONPM2310010

Units in this development

Type	Surface	Terrace	Bedrooms	Bathrooms	Price	State
House	227 m ²	1 (35 m ²)	3	3	€ 1,200,000	Available
House	227 m ²	1 (35 m ²)	3	3	€ 1,200,000	Available
House	227 m ²	1 (35 m ²)	3	3	€ 1,200,000	Available
House	227 m ²	1 (35 m ²)	3	3	€ 1,200,000	Available

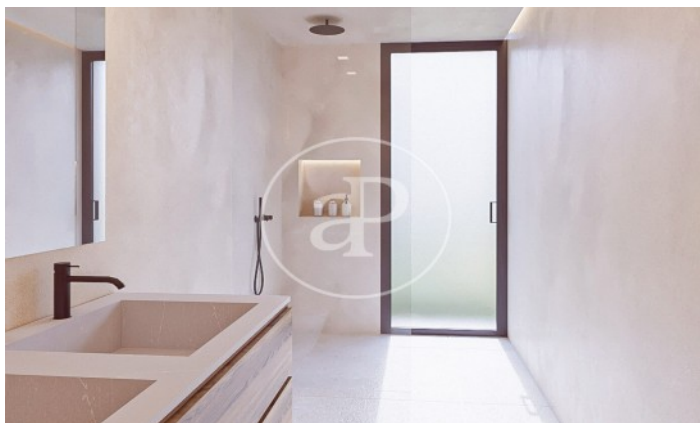
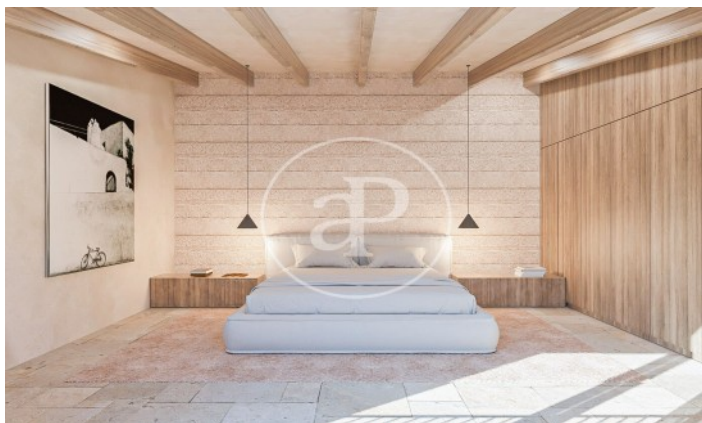
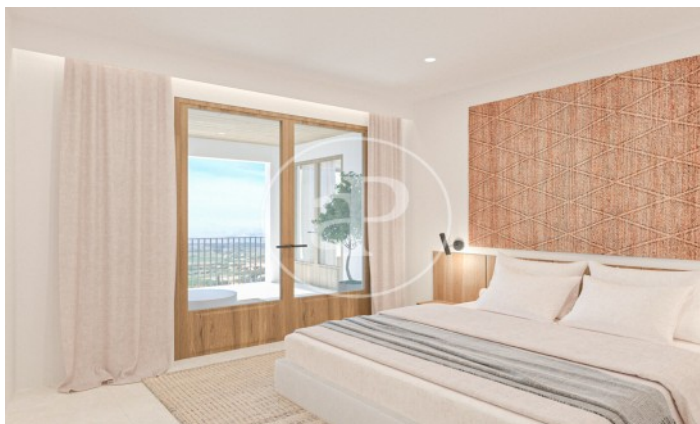
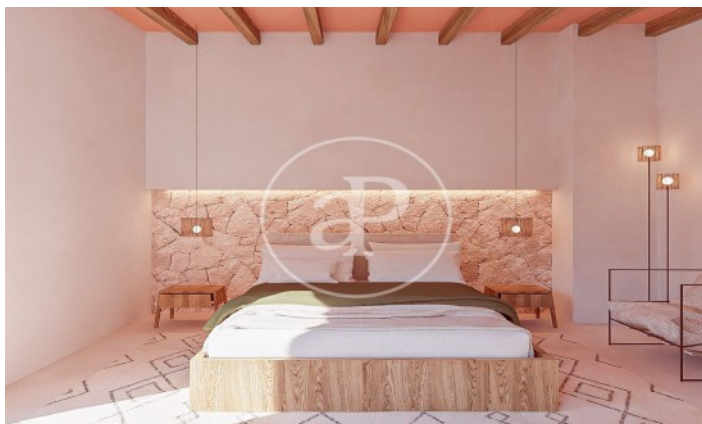
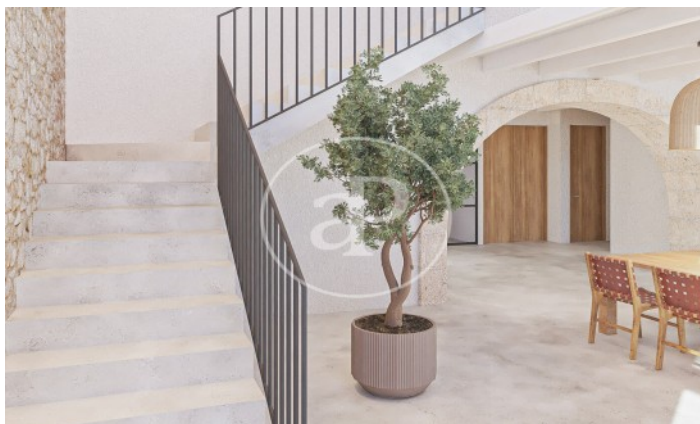
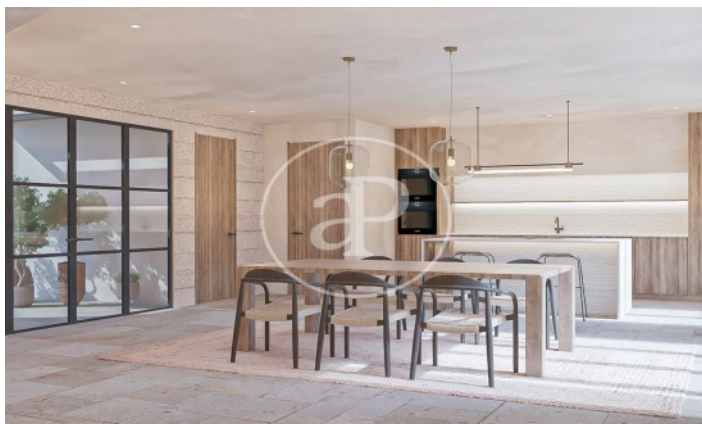
(Santanyí Pueblo)

Ref: ONPM2310010



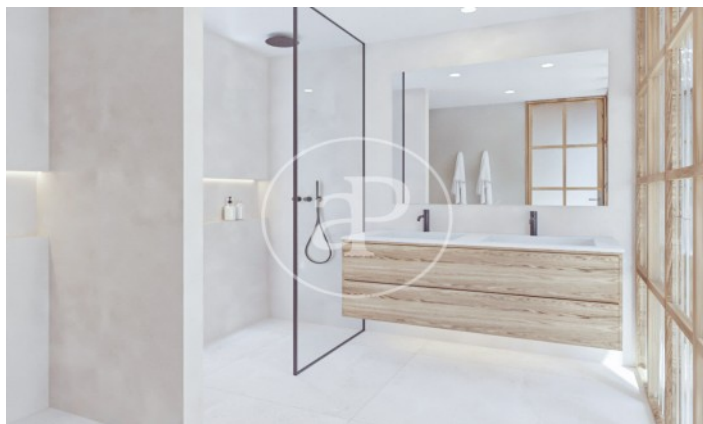
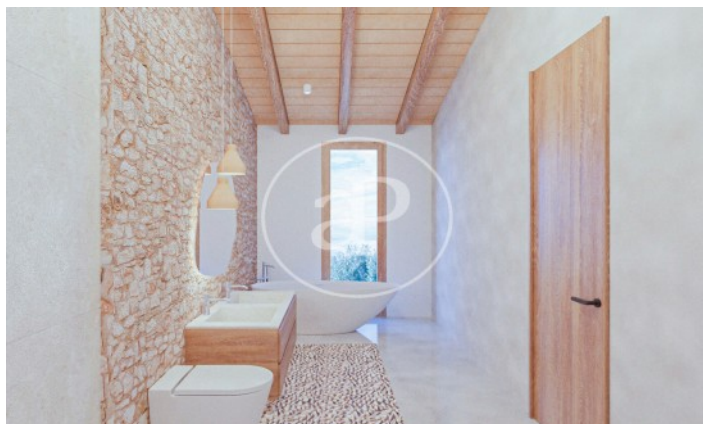
(Santanyí Pueblo)

Ref: ONPM2310010



(Santanyí Pueblo)

Ref: ONPM2310010



The information about any property is not binding to any offer or contract. Any verbal or written declaration made by aProperties with regards to the value or condition of the property should not be considered accurate or factual. The pictures make reference to some parts of the property at the times that they were taken. The areas, dimensions and distances that are given are approximate and should be checked by the client. The images are computer generated and are just an approximate indication of the real appearance of the property; these may change at any time. The information with regards to the property may also change at any time.

Contact us today for more information or to arrange a viewing

Tel: 871 16 01 60

apropertiespalma@aproperties.es

<https://www.aproperties.es>