



Santanyí Pueblo, Santanyí

REF. VPM2501017

Charming detached house under construction in Santanyí

Features

- ✓ Views
- ✓ AACC
- ✓ Backyard
- ✓ Lift
- ✓ Heating
- ✓ Terrace
- ✓ Pool

Price

3,480,000 €

Surface

462 m²

Bedrooms

3

Bathrooms

4



Discover this spectacular single-family home, a true oasis of luxury and serenity.

Situated in a privileged location, just minutes from the town center, it combines proximity with the tranquility of a cul-de-sac street and captivating open views. Its architectural design stands out for an elegant natural stone facade with lime mortar finishes, while the interiors merge Mallorcan tradition and modernity: masonry cladding in kitchen and bedrooms, microcement in bathrooms, and floors that alternate warm parquet with high quality porcelain stoneware. The carefully designed terraces offer a perfect connection between indoors and outdoors, ideal for outdoor

entertaining. Iroko wood carpentry and iconic Mallorcan shutters add a timeless, handcrafted touch, complemented by energy-efficient aluminum glazing. The bathrooms, clad with Zarzi marble, designer faucets and micro-cement, are a haven of style and relaxation. The kitchen, equipped with black granite countertops and state-of-the-art appliances, becomes the functional and sophisticated heart of the home. This home is equipped with state-of-the-art technology: Airzone central air conditioning, underfloor heating, high-speed WiFi and an Excelsior elevator that guarantees accessibility with...

Contact us,
we will be happy to assist you,
to offer you more details and information.

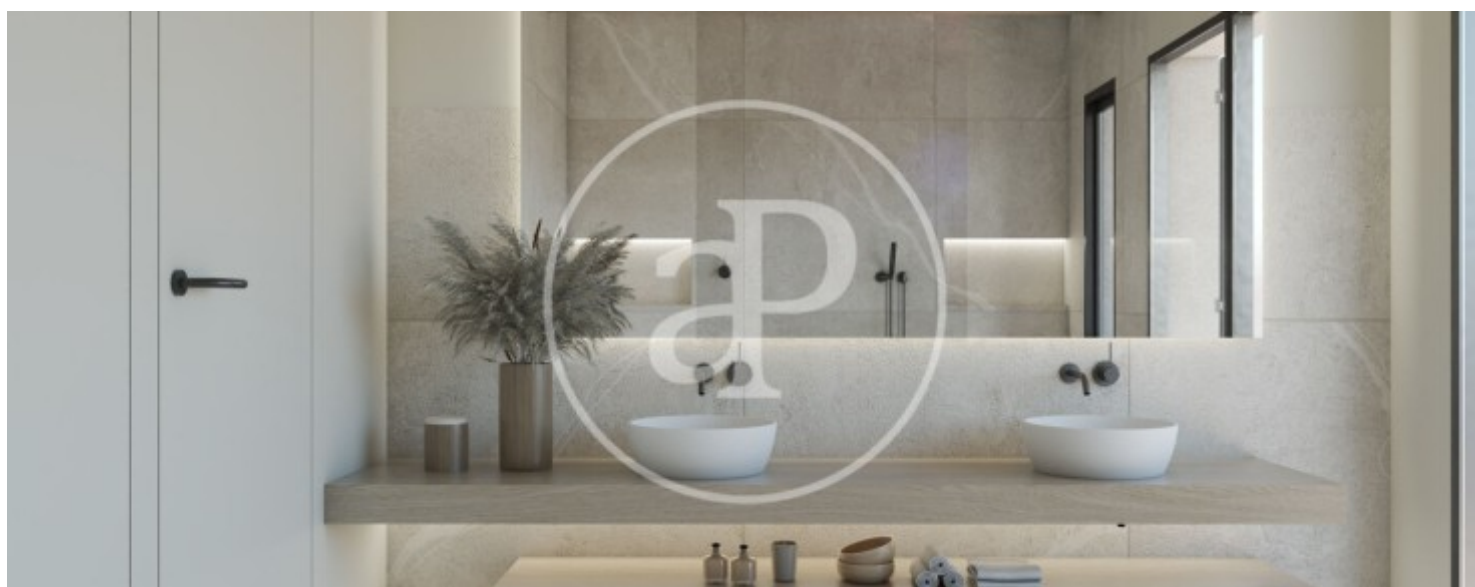
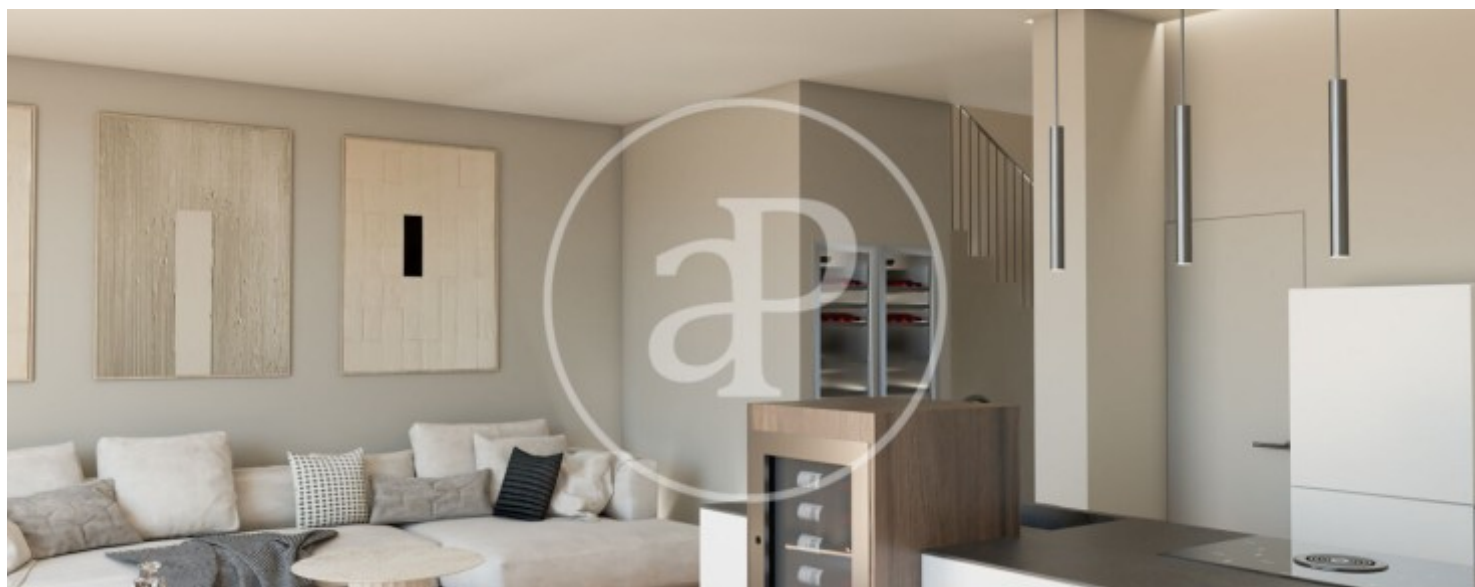
Santanyí Pueblo, Santanyí

REF. VPM2501017



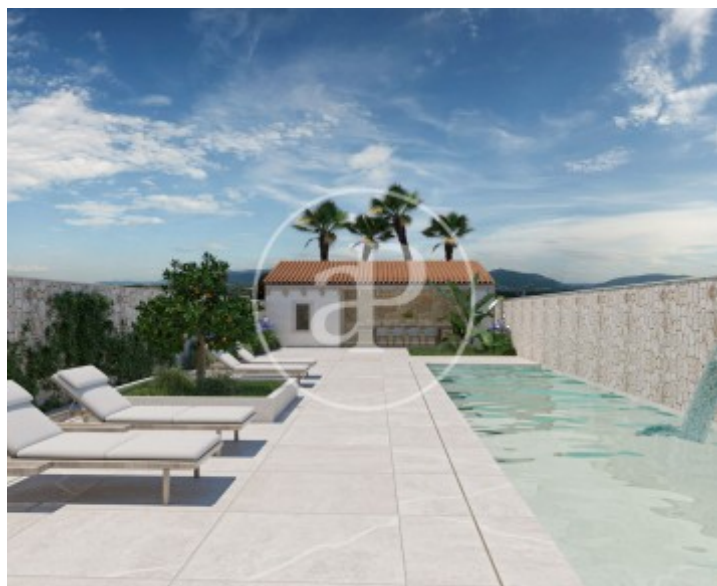
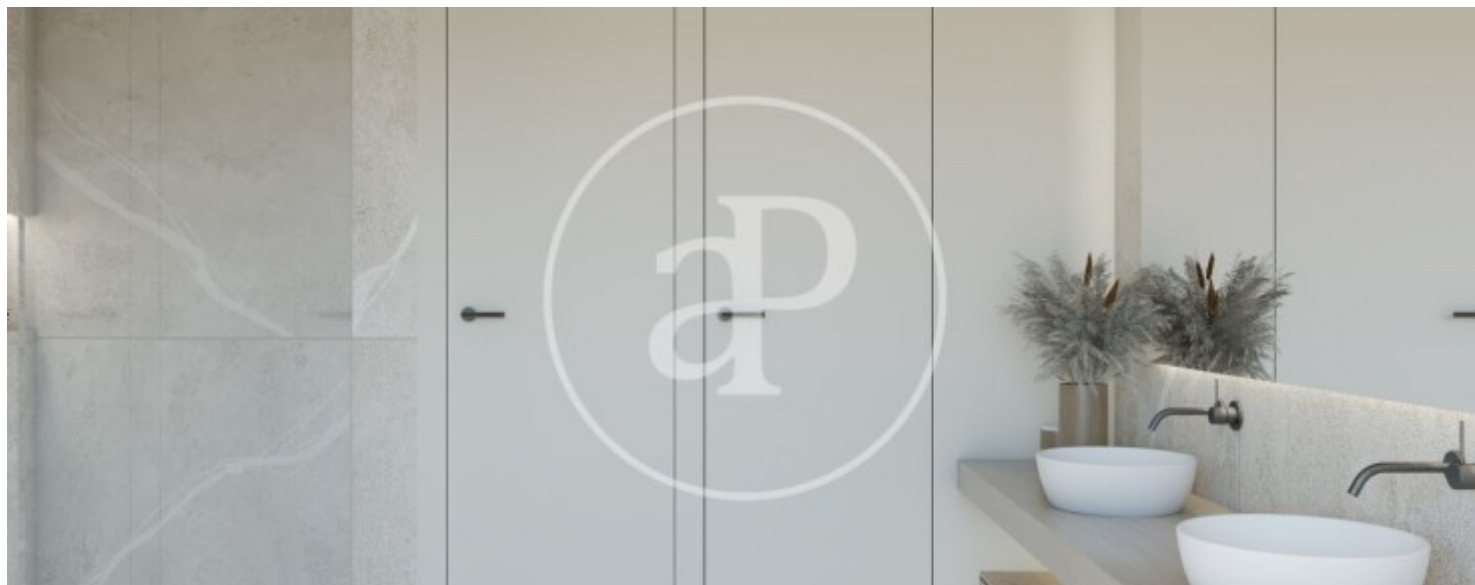
Santanyí Pueblo, Santanyí

REF. VPM2501017



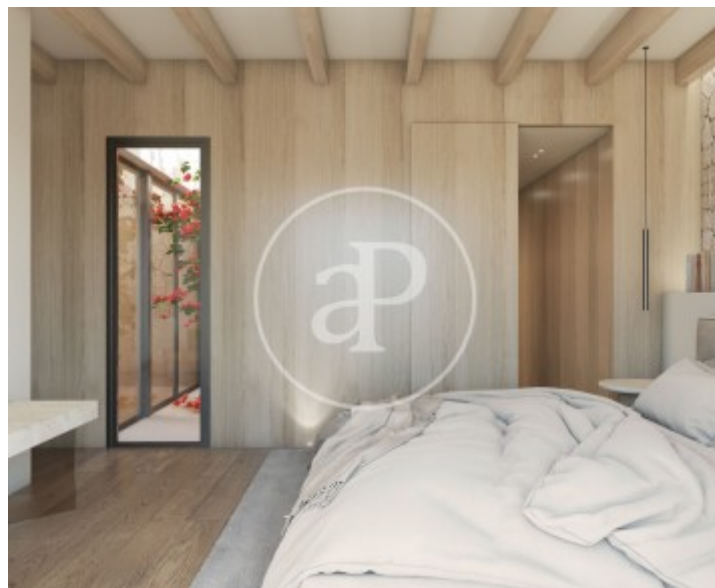
Santanyí Pueblo, Santanyí

REF. VPM2501017



Santanyí Pueblo, Santanyí

REF. VPM2501017



The information about any property is not binding to any offer or contract. Any verbal or written declaration made by aProperties with regards to the value or condition of the property should not be considered accurate or factual. The pictures make reference to some parts of the property at the times that they were taken. The areas, dimensions and distances that are given are approximate and should be checked by the client. The images are computer generated and are just an approximate indication of the real appearance of the property; these may change at any time. The information with regards to the property may also change at any time.

For **more information** or
to make an appointment

apropertiespalma@aproperties.es
Tel: 871 16 01 60
www.aproperties.es