

(Cala d'Or)

Ref: ONPM2310005



Apartment for sale in new construction in Cala d'Or

Compass Cala d'Or presents a captivating project of 2-bedroom apartments, designed with an architecture that pays homage to the Mediterranean style, where white predominates in all its splendour. This project is immersed in extensive gardens and offers 2 communal swimming pools, inviting you to enjoy the magnificent climate that characterises this beautiful island. The flats at Compass Cala d'Or have 2 bedrooms and 2 bathrooms (one of them en-suite), as well as spacious terraces that allow you to make the most of the unique Mediterranean climate. If you opt for the ground floors, large terraces with porches and private gardens await you, while the other apartments have large terraces offering lovely views of the village, swimming pools and communal gardens. Some lucky ones can even enjoy views of the harbour. These contemporary, minimalist homes have been designed with high quality equipment and attention to detail, backed by over 60 years of experience in creating quality homes. Each home comes with its own surface parking space. The high quality finishes have given life to an innovative concept of housing, making the most of the space with a large living room that opens onto [...]

Santanyí / Cala d'Or

Unit 2 3

Completion Q4 2023

FEATURES

Surface 61 m² / 17 m² terrace

2 Rooms

1 Toilets

- ✓ Views
- ✓ Heating
- ✓ Boxroom
- ✓ AACC
- ✓ Terrace
- ✓ Backyard
- ✓ Pool
- ✓ Lift
- ✓ Has parking

Price 350,000 €

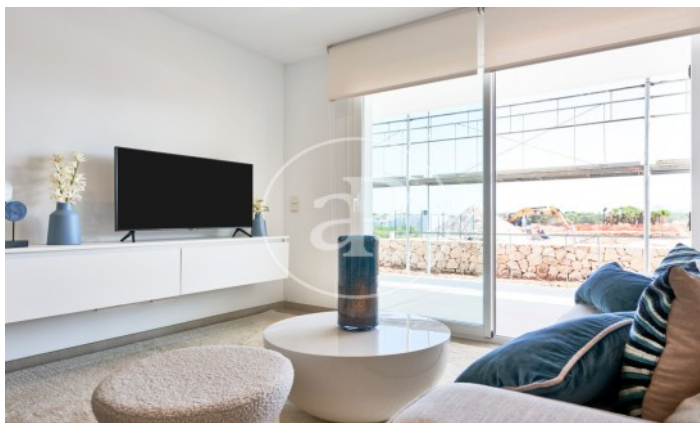
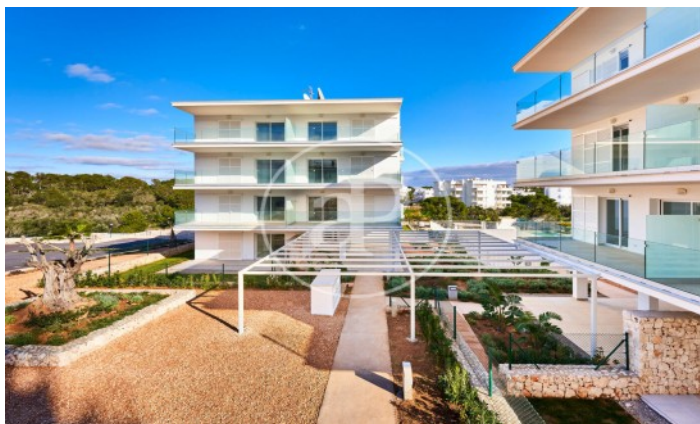
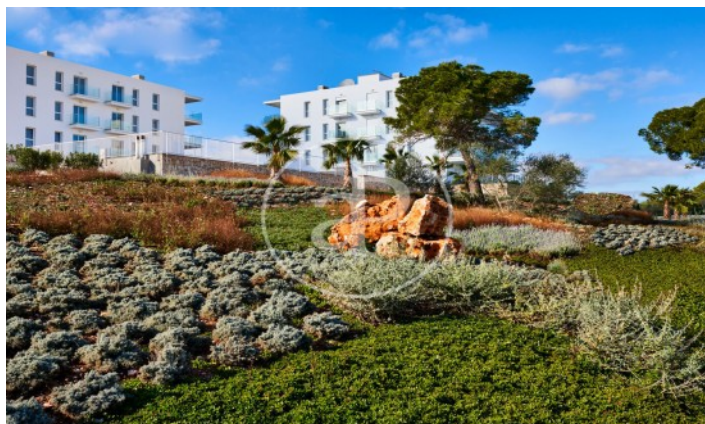
(Cala d'Or)

Ref: ONPM2310005



(Cala d'Or)

Ref: ONPM2310005



(Cala d'Or)

Ref: ONPM2310005



The information about any property is not binding to any offer or contract. Any verbal or written declaration made by aProperties with regards to the value or condition of the property should not be considered accurate or factual. The pictures make reference to some parts of the property at the times that they were taken. The areas, dimensions and distances that are given are approximate and should be checked by the client. The images are computer generated and are just an approximate indication of the real appearance of the property; these may change at any time. The information with regards to the property may also change at any time.

Contact us today for more information or to arrange a viewing

Tel: 871 16 01 60

apropertiespalma@aproperties.es

<https://www.aproperties.es>