

Santanyí

REF. APMS2207033

Apartment for Rent in Portopetro - Front line beach with Balcony

Features

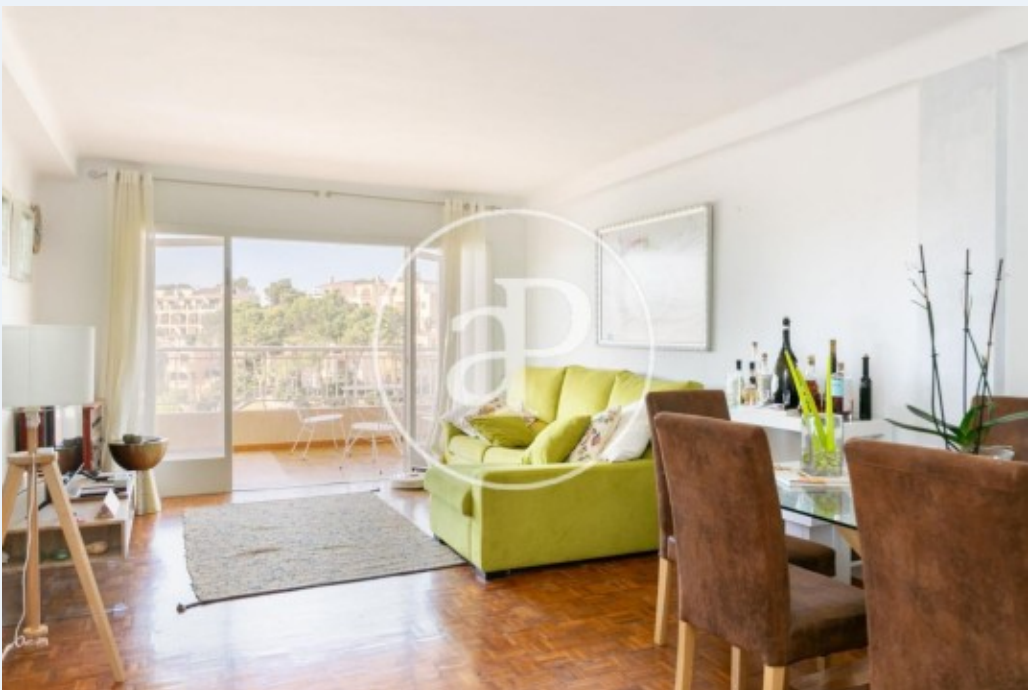
- ✓ Views
- ✓ AACC
- ✓ Lift
- ✓ Furnished
- ✓ Terrace

Surface
90 m²

Bedrooms
2

Bathroom
1

Price
1,800 €



**ONLY AVAILABLE FOR SHORT STAY
RENTAL (from 32 days to 11 months) -Available
from the 1st of September.**

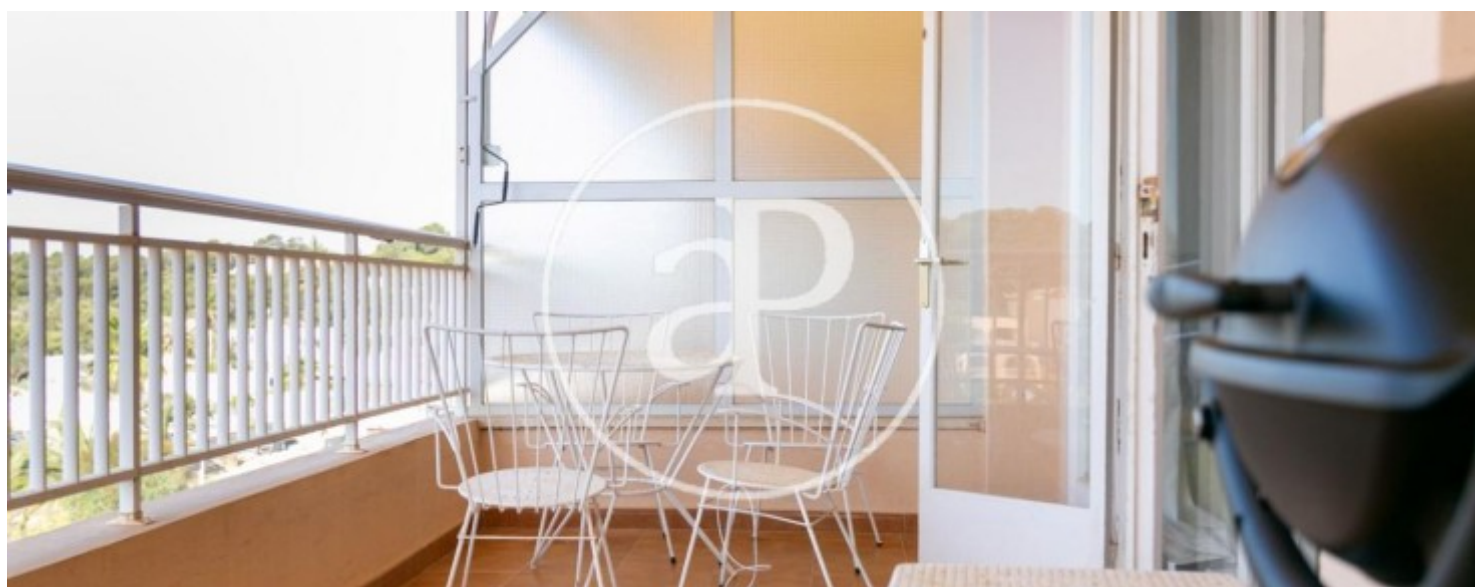
In the southeast of the island of Majorca lies Portopetro, a traditional fishing village that has become a quiet and exclusive holiday resort, with some of the most paradisiacal coves on the island (Cala Ferrera, Cala Serena, Cala Mondragó, Cala Barca, Cala d'Or). Next to the natural park of Mondragó, its picturesque fishing harbour and the exclusive Club Náutico de Portopetro you find this front line beach flat for temporary rental. The cosy and completely refurbished flat has a small entrance hall leading to the living-dining room with a

large window and balcony with views to the harbour, nearby coves and cobbled promenades. The living room has a television and the balcony has outdoor furniture to enjoy the wonderful views. The kitchen is fully equipped with new appliances and household goods. In the sleeping area there are two double bedrooms, both with double beds, and the modern bathroom with shower and all the necessities for your stay. The building is located on the traditional promenade of the Port of Portopetro, surrounded by traditional restaurants and with the architecture and fresh products typical of a quiet...

Contact us,
we will be happy to assist you,
to offer you more details and information.

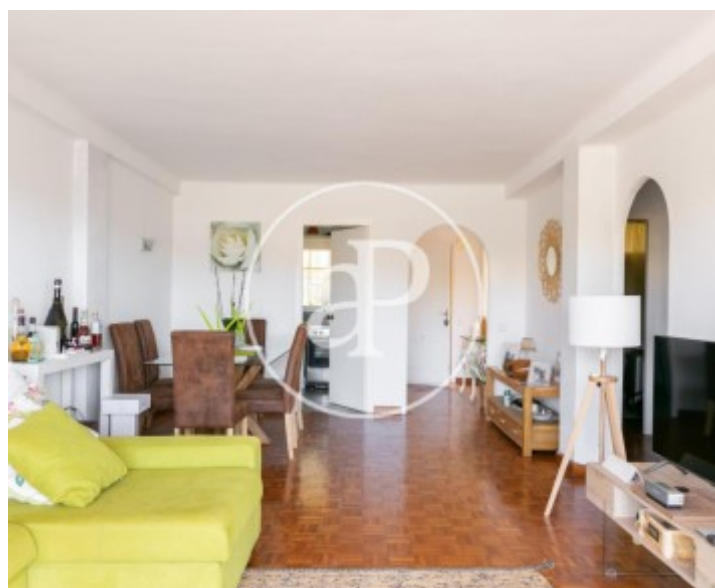
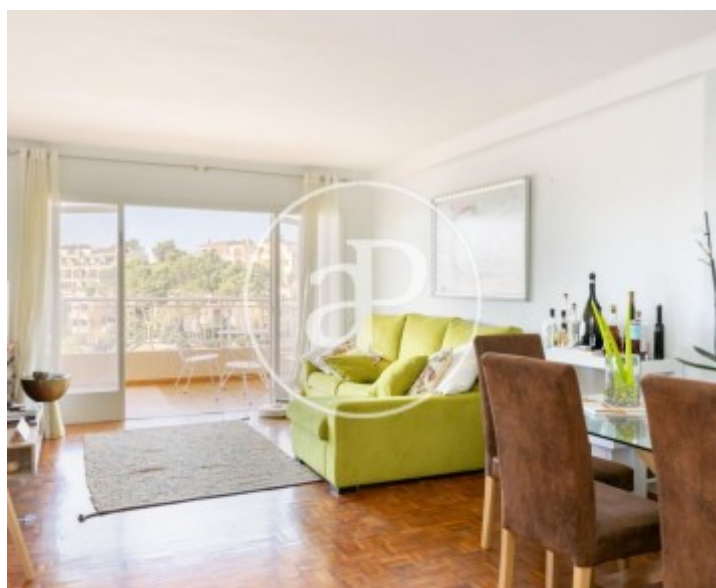
Santanyí

REF. APMS2207033



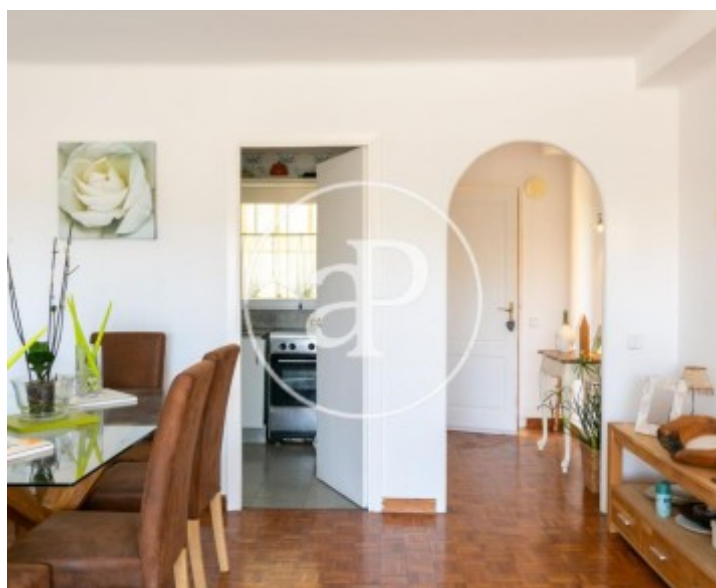
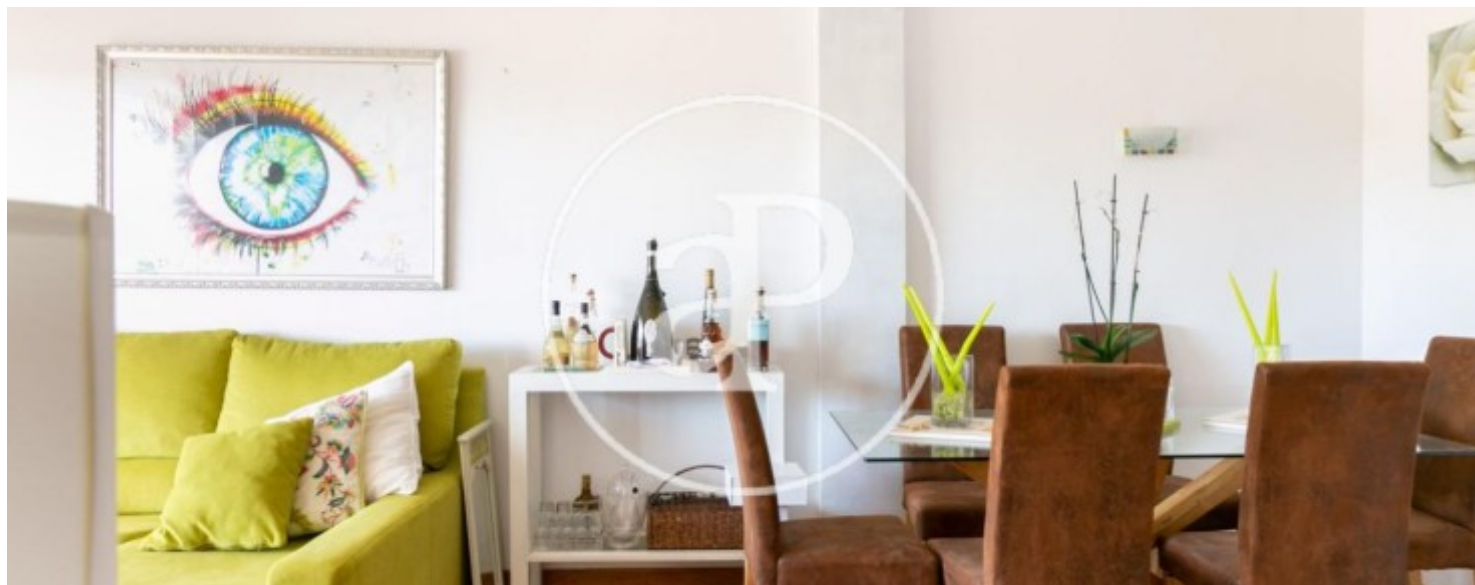
Santanyí

REF. APMS2207033



Santanyí

REF. APMS2207033



Santanyí

REF. APMS2207033



The information about any property is not binding to any offer or contract. Any verbal or written declaration made by aProperties with regards to the value or condition of the property should not be considered accurate or factual. The pictures make reference to some parts of the property at the times that they were taken. The areas, dimensions and distances that are given are approximate and should be checked by the client. The images are computer generated and are just an approximate indication of the real appearance of the property; these may change at any time. The information with regards to the property may also change at any time.

For **more information** or
to make an appointment

apropertiespalma@aproperties.es
Tel: 871 16 01 60
www.aproperties.es